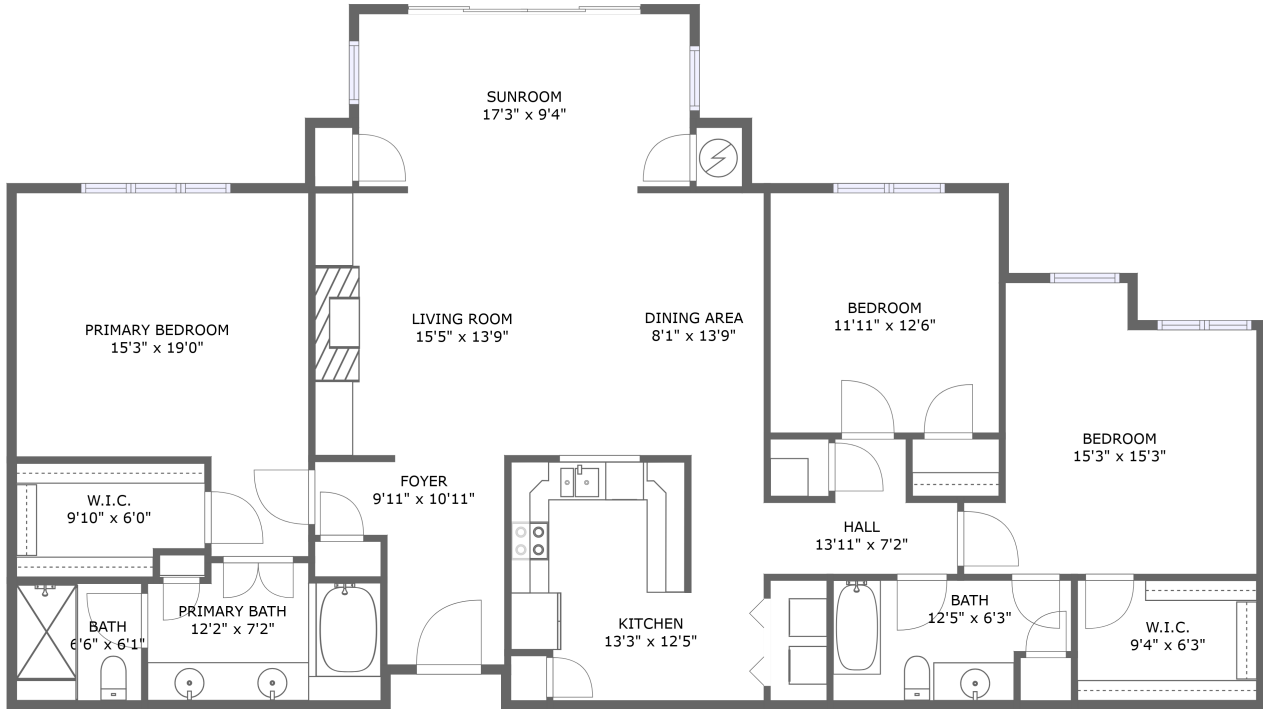



225 23rd Street Southwest, South Roanoke, Roanoke,  
Roanoke city, Virginia, United States, 24014, 306



FLOOR 1

## Property summary

 **0** Garages

 **3** Bedrooms

 **2** Bathrooms

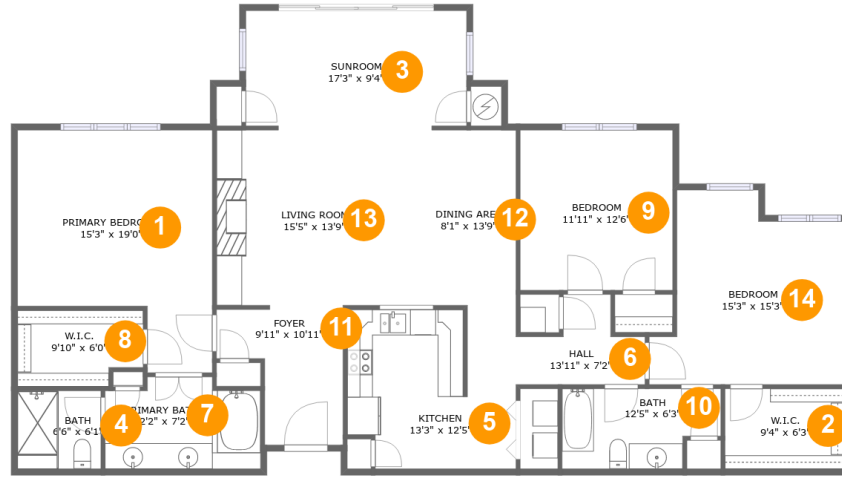
 **0** Half baths

 **1** Floors

 **1,806** Gross living area sqft

 **1,806** Total sqft

225 23rd Street Southwest, South Roanoke, Roanoke,  
Roanoke city, Virginia, United States, 24014, 306



## Room dimensions

Floor 1

Total sqft: 1806 Living area: 1806

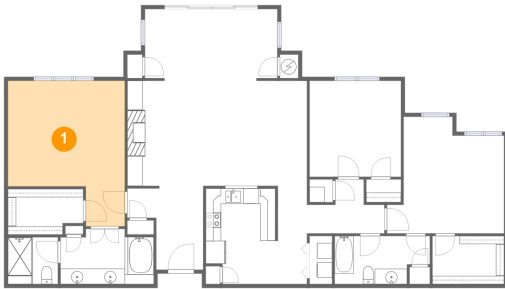
#		Dimensions	sqft	Counted as living area
1	Primary Bedroom	15'3" x 19'0"	237 sq. ft	Yes
2	W.I.C.	9'4" x 6'3"	59 sq. ft	Yes
3	Sunroom	17'3" x 9'4"	160 sq. ft	Yes
4	Bath	6'6" x 6'1"	40 sq. ft	Yes
5	Kitchen	13'3" x 12'5"	135 sq. ft	Yes
6	Hall	13'11" x 7'2"	77 sq. ft	Yes
7	Primary Bath	12'2" x 7'2"	80 sq. ft	Yes
8	W.I.C.	9'10" x 6'0"	55 sq. ft	Yes
9	Bedroom	11'11" x 12'6"	150 sq. ft	Yes
10	Bath	12'5" x 6'3"	70 sq. ft	Yes
11	Foyer	9'11" x 10'11"	81 sq. ft	Yes

**225 23rd Street Southwest, South Roanoke, Roanoke,  
Roanoke city, Virginia, United States, 24014, 306**

#		Dimensions	sqft	Counted as living area
12	Dining Area	8'1" x 13'9"	110 sq. ft	Yes
13	Living Room	15'5" x 13'9"	211 sq. ft	Yes
14	Bedroom	15'3" x 15'3"	191 sq. ft	Yes

**225 23rd Street Southwest, South Roanoke, Roanoke,  
Roanoke city, Virginia, United States, 24014, 306**

## 1 Floor 1 - Primary Bedroom



**Dimensions:** 15'3" x 19'0"  
**Area:** 237 sq. ft  
**Counted as living area:** Yes

**Heated:** Yes  
**Finished:** Yes  
**Enclosed:** Yes  
**Contiguous:** Yes  
**Permitted:** Yes  
**Wet space:** No  
**Addition:** No  
**Conversion:** No

## 2 Floor 1 - W.I.C.

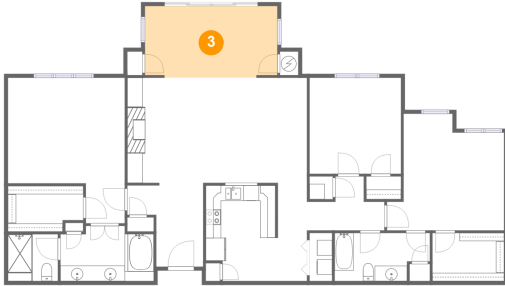


**Dimensions:** 9'4" x 6'3"  
**Area:** 59 sq. ft  
**Counted as living area:** Yes

**Heated:** Yes  
**Finished:** Yes  
**Enclosed:** Yes  
**Contiguous:** Yes  
**Permitted:** Yes  
**Wet space:** No  
**Addition:** No  
**Conversion:** No

225 23rd Street Southwest, South Roanoke, Roanoke,  
Roanoke city, Virginia, United States, 24014, 306

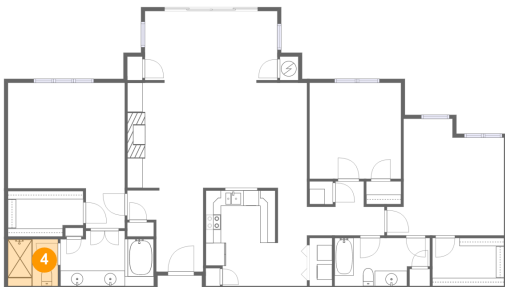
### 3 Floor 1 - Sunroom



Dimensions: 17'3" x 9'4"  
Area: 160 sq. ft  
Counted as living area: Yes

Heated: Yes  
Finished: Yes  
Enclosed: Yes  
Contiguous: Yes  
Permitted: Yes  
Wet space: No  
Addition: No  
Conversion: No

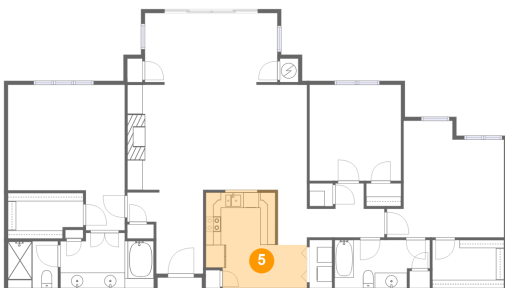
### 4 Floor 1 - Bath



Dimensions: 6'6" x 6'1"  
Area: 40 sq. ft  
Counted as living area: Yes

Heated: Yes  
Finished: Yes  
Enclosed: Yes  
Contiguous: Yes  
Permitted: Yes  
Wet space: Yes  
Addition: No  
Conversion: No

### 5 Floor 1 - Kitchen

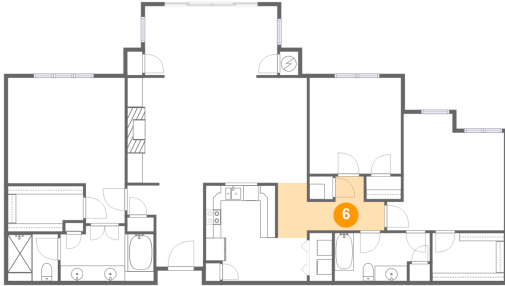


Dimensions: 13'3" x 12'5"  
Area: 135 sq. ft  
Counted as living area: Yes

Heated: Yes  
Finished: Yes  
Enclosed: Yes  
Contiguous: Yes  
Permitted: Yes  
Wet space: No  
Addition: No  
Conversion: No

225 23rd Street Southwest, South Roanoke, Roanoke,  
Roanoke city, Virginia, United States, 24014, 306

### 6 Floor 1 - Hall



Dimensions: 13'11" x 7'2"  
Area: 77 sq. ft  
Counted as living area: Yes

Heated: Yes  
Finished: Yes  
Enclosed: Yes  
Contiguous: Yes  
Permitted: Yes  
Wet space: No  
Addition: No  
Conversion: No

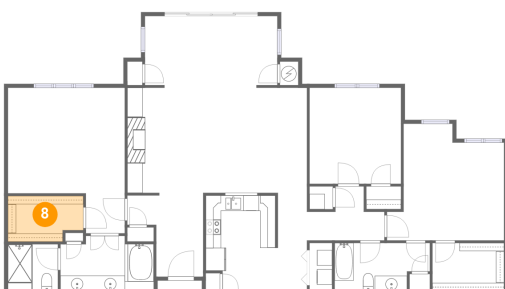
### 7 Floor 1 - Primary Bath



Dimensions: 12'2" x 7'2"  
Area: 80 sq. ft  
Counted as living area: Yes

Heated: Yes  
Finished: Yes  
Enclosed: Yes  
Contiguous: Yes  
Permitted: Yes  
Wet space: Yes  
Addition: No  
Conversion: No

### 8 Floor 1 - W.I.C.

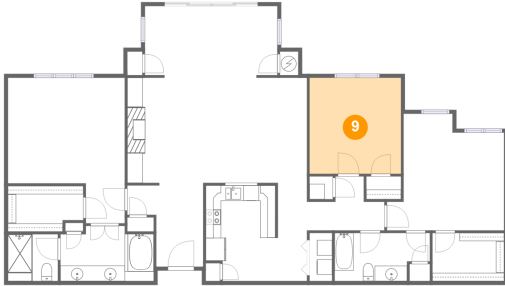


Dimensions: 9'10" x 6'0"  
Area: 55 sq. ft  
Counted as living area: Yes

Heated: Yes  
Finished: Yes  
Enclosed: Yes  
Contiguous: Yes  
Permitted: Yes  
Wet space: No  
Addition: No  
Conversion: No

225 23rd Street Southwest, South Roanoke, Roanoke,  
Roanoke city, Virginia, United States, 24014, 306

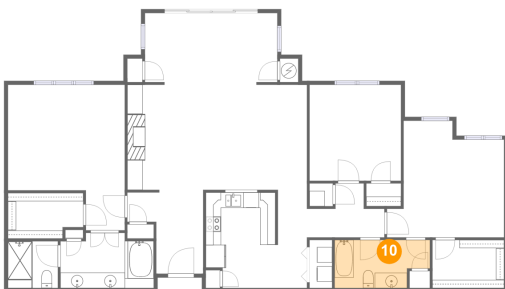
## 9 Floor 1 - Bedroom



Dimensions: 11'11" x 12'6"  
Area: 150 sq. ft  
Counted as living area: Yes

Heated: Yes  
Finished: Yes  
Enclosed: Yes  
Contiguous: Yes  
Permitted: Yes  
Wet space: No  
Addition: No  
Conversion: No

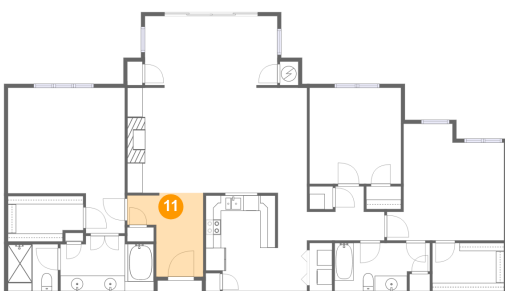
## 10 Floor 1 - Bath



Dimensions: 12'5" x 6'3"  
Area: 70 sq. ft  
Counted as living area: Yes

Heated: Yes  
Finished: Yes  
Enclosed: Yes  
Contiguous: Yes  
Permitted: Yes  
Wet space: Yes  
Addition: No  
Conversion: No

## 11 Floor 1 - Foyer

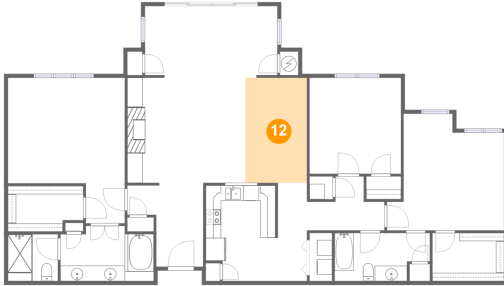


Dimensions: 9'11" x 10'11"  
Area: 81 sq. ft  
Counted as living area: Yes

Heated: Yes  
Finished: Yes  
Enclosed: Yes  
Contiguous: Yes  
Permitted: Yes  
Wet space: No  
Addition: No  
Conversion: No

225 23rd Street Southwest, South Roanoke, Roanoke,  
Roanoke city, Virginia, United States, 24014, 306

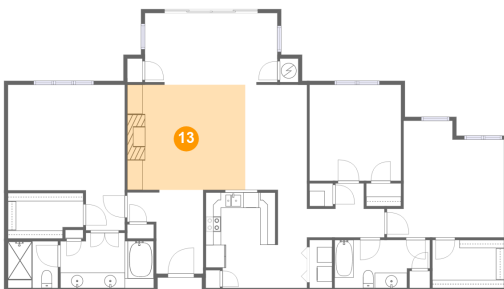
## 12 Floor 1 - Dining Area



Dimensions: 8'1" x 13'9"  
Area: 110 sq. ft  
Counted as living area: Yes

Heated: Yes  
Finished: Yes  
Enclosed: Yes  
Contiguous: Yes  
Permitted: Yes  
Wet space: No  
Addition: No  
Conversion: No

## 13 Floor 1 - Living Room



Dimensions: 15'5" x 13'9"  
Area: 211 sq. ft  
Counted as living area: Yes

Heated: Yes  
Finished: Yes  
Enclosed: Yes  
Contiguous: Yes  
Permitted: Yes  
Wet space: No  
Addition: No  
Conversion: No

## 14 Floor 1 - Bedroom



Dimensions: 15'3" x 15'3"  
Area: 191 sq. ft  
Counted as living area: Yes

Heated: Yes  
Finished: Yes  
Enclosed: Yes  
Contiguous: Yes  
Permitted: Yes  
Wet space: No  
Addition: No  
Conversion: No