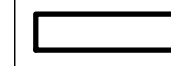



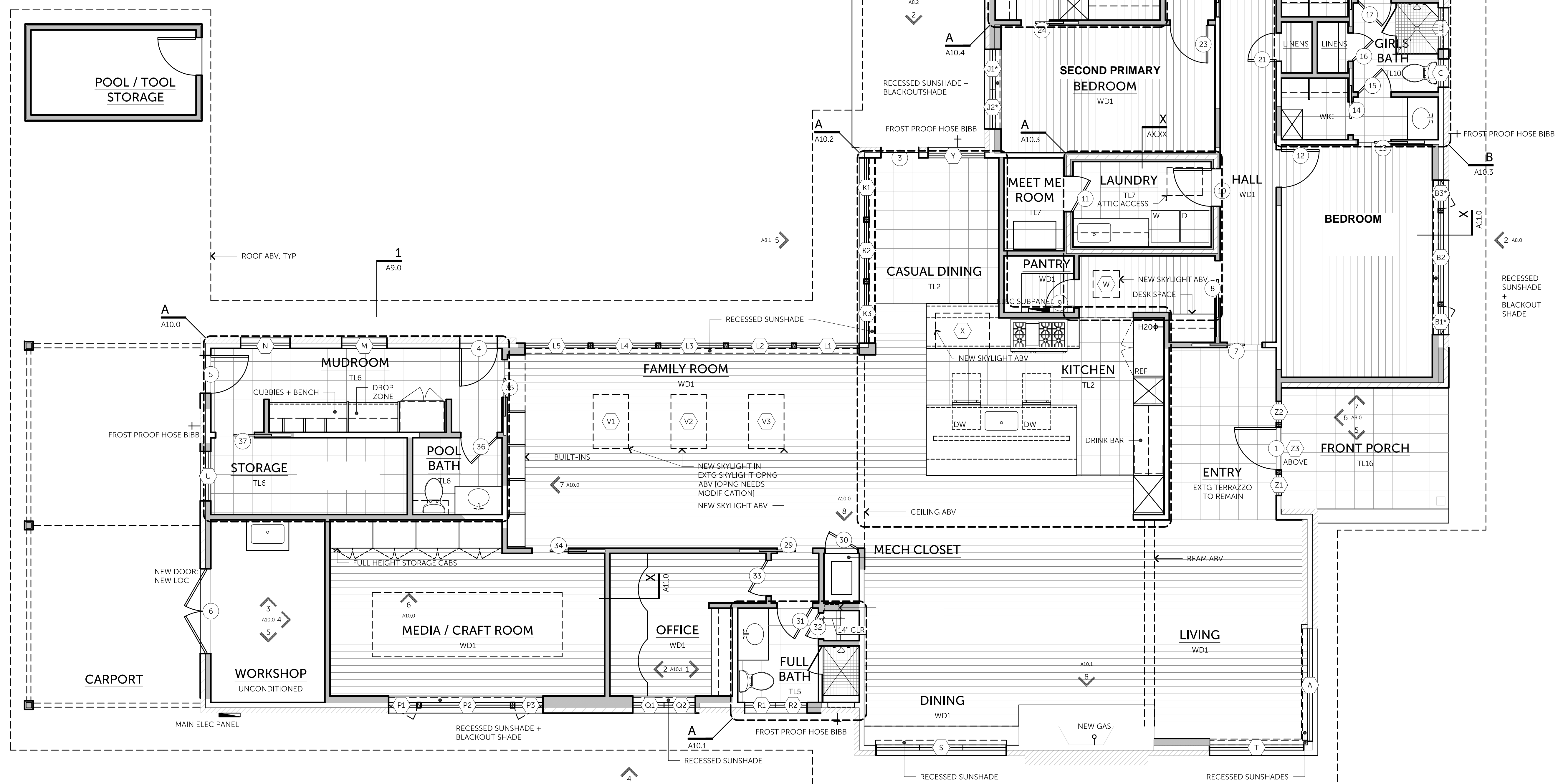


**LEGEND**

-  NEW CONSTRUCTION  
[2x4 STUDS @ 16" OC UON]
-  MASONRY
-  NEW COUNTERTOPS
-  ETR NIC (NOT IN CONTRACT)

**GENERAL NOTES**

- A. PROTECT EXISTING FLOOR DURING CONSTRUCTION.
- B. FIELD VERIFY ALL DIMENSIONS AND REPORT ANY DISCREPANCIES TO THE ARCHITECT.
- C. DRAWINGS ARE TO SCALE INDICATED. SCALING OF DRAWINGS FOR GENERAL INFORMATION IS ACCEPTABLE, BUT DO NOT SCALE DRAWINGS FOR EXACT SIZES, LAYOUT, ETC. REFER ALL DIMENSIONAL QUESTIONS TO ARCHITECT.
- D. FIELD VERIFY W/ STRUCTURAL ENGINEER THAT ANY WALLS TO BE REMOVED ARE NON-LOAD BEARING; PROVIDE ENGINEER'S APPROVAL LETTER AS NEEDED.
- E. UNLESS NOTED OTHERWISE, ALL EXTERIOR DIMENSIONS ARE GIVEN TO FACE OF STUD AND ALL INTERIOR DIMENSIONS ARE GIVEN TO FACE OF GWB (GYPSUM WALL BOARD)/TBB (TILE BACKER BOARD).
- F. REFER TO PROJECT MANUAL FOR SCHEDULES, PRODUCT DATA + SPECIFICATIONS.
- G. VERIFY ALL APPLIANCES AND PLUMBING FIXTURE DIMENSIONS AND REQUIREMENTS WITH PROJECT MANUAL - COORDINATE WITH CABINETRY.



COPYRIGHT ©2018 CGS DESIGN-BUILD  
THIS DRAWING MAY NOT BE "BID OUT", REPRODUCED OR VIEWED  
BY ANY OTHER CONSTRUCTION COMPANIES WITHOUT WRITTEN  
PERMISSION FROM CGS DESIGN-BUILD.

402 CORRAL LANE  
AUSTIN, TEXAS 78745

OFFICE: 512-444-1580  
FAX: 512-444-1790

2509 GREENLEE DRIVE  
AUSTIN, TEXAS 78703



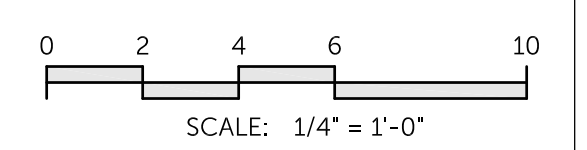
PRIEST

CONTRACT DOCUMENTS

08.09.2019

WHEN PRINTED AT 50% (LARGER) ALL SCALES SHALL BE 1/2 THE SIZE OF NOTED SCALES.

FLOOR PLAN



SHEET NO.

**A4.0**



**1 FLOOR PLAN**

P:\-CURRENT PROJECTS - \Priest Whole House Renovations\4 - Design\2 - CAD\AutoCAD\PRIEST\_PLANI.dwg