

Home report

311 Morningwood Lane, Wirtz, Franklin County, Virginia, United States, 24184



Total Area: 4449 sq. ft

Floor 1: 1897 sq. ft, Floor 2: 2552 sq. ft

Excluded: Storage 328 sq. ft, Outdoor Patio Covered 354 sq. ft, Outdoor Deck Covered 279 sq. ft, Utility 40 sq. ft, Garage 600 sq. ft, Outdoor Deck 596 sq. ft, Outdoor Porch 53 sq. ft

Property summary

**2**
Floors

**5**
Bedrooms

**4**
Bathrooms

Home report

311 Morningwood Lane, Wirtz, Franklin County, Virginia, United States, 24184



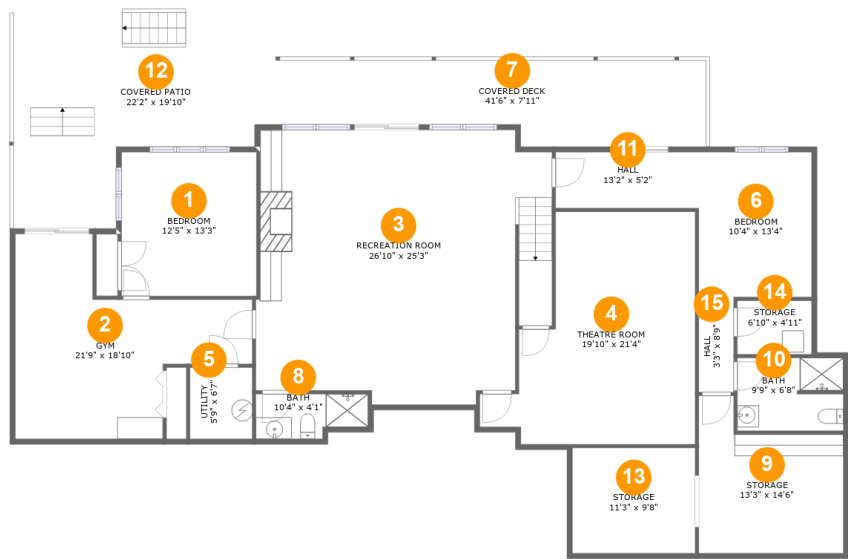
1
Half baths



1
Garages

Home report

311 Morningwood Lane, Wirtz, Franklin County, Virginia, United States, 24184



Room dimensions

Floor 1

Total:1897sqft

Excluded: 1001sqft

| # | | Max Dimensions | sqft | Included |
|----|-----------------|----------------|------------|----------|
| 1 | Bedroom | 12'5" x 13'3" | 164 sq. ft | Yes |
| 2 | Gym | 21'9" x 18'10" | 265 sq. ft | Yes |
| 3 | Recreation Room | 26'10" x 25'3" | 628 sq. ft | Yes |
| 4 | Theatre Room | 19'10" x 21'4" | 320 sq. ft | Yes |
| 5 | Utility | 5'9" x 6'7" | 38 sq. ft | No |
| 6 | Bedroom | 10'4" x 13'4" | 138 sq. ft | Yes |
| 7 | Covered Deck | 41'6" x 7'11" | 279 sq. ft | No |
| 8 | Bath | 10'4" x 4'1" | 38 sq. ft | Yes |
| 9 | Storage | 13'3" x 14'6" | 157 sq. ft | No |
| 10 | Bath | 9'9" x 6'8" | 64 sq. ft | Yes |
| 11 | Hall | 13'2" x 5'2" | 68 sq. ft | Yes |

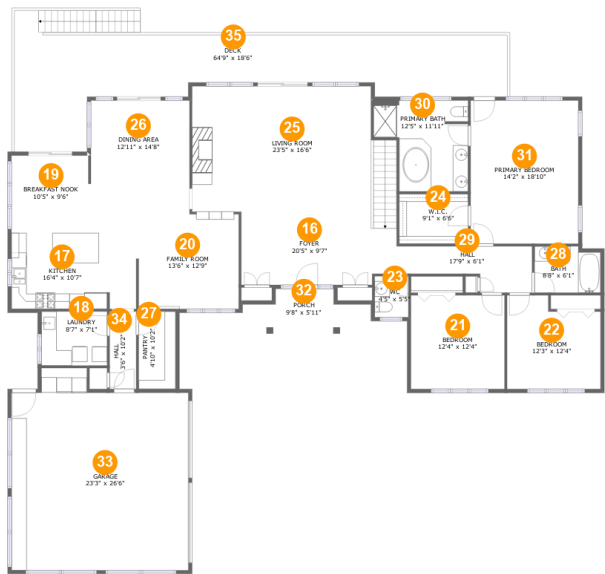
Home report

311 Morningwood Lane, Wirtz, Franklin County, Virginia, United States, 24184

| # | | Max Dimensions | sqft | Included |
|----|---------------|----------------|------------|----------|
| 12 | Covered Patio | 22'2" x 19'10" | 354 sq. ft | No |
| 13 | Storage | 11'3" x 9'8" | 109 sq. ft | No |
| 14 | Storage | 6'10" x 4'11" | 34 sq. ft | No |
| 15 | Hall | 3'3" x 8'9" | 28 sq. ft | Yes |

Home report

311 Morningwood Lane, Wirtz, Franklin County, Virginia, United States, 24184



Room dimensions

Floor 2

Total:2552sqft

Excluded: 1249sqft

| # | | Max Dimensions | sqft | Included |
|----|----------------|----------------|------------|----------|
| 16 | Foyer | 20'5" x 9'7" | 222 sq. ft | Yes |
| 17 | Kitchen | 16'4" x 10'7" | 186 sq. ft | Yes |
| 18 | Laundry | 8'7" x 7'1" | 61 sq. ft | Yes |
| 19 | Breakfast Nook | 10'5" x 9'6" | 99 sq. ft | Yes |
| 20 | Family Room | 13'6" x 12'9" | 168 sq. ft | Yes |
| 21 | Bedroom | 12'4" x 12'4" | 151 sq. ft | Yes |
| 22 | Bedroom | 12'3" x 12'4" | 136 sq. ft | Yes |
| 23 | WC | 4'5" x 5'5" | 24 sq. ft | Yes |
| 24 | W.I.C. | 9'1" x 6'6" | 59 sq. ft | Yes |
| 25 | Living Room | 23'5" x 16'6" | 388 sq. ft | Yes |
| 26 | Dining Area | 12'11" x 14'8" | 190 sq. ft | Yes |

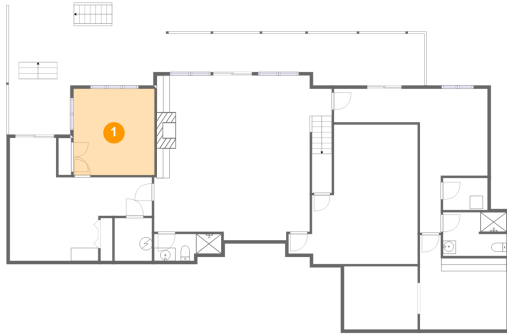
Home report

311 Morningwood Lane, Wirtz, Franklin County, Virginia, United States, 24184

| # | | Max Dimensions | sqft | Included |
|----|-----------------|----------------|------------|----------|
| 27 | Pantry | 4'10" x 10'2" | 49 sq. ft | Yes |
| 28 | Bath | 8'8" x 6'1" | 51 sq. ft | Yes |
| 29 | Hall | 17'9" x 6'1" | 81 sq. ft | Yes |
| 30 | Primary Bath | 12'5" x 11'11" | 123 sq. ft | Yes |
| 31 | Primary Bedroom | 14'2" x 18'10" | 266 sq. ft | Yes |
| 32 | Porch | 9'8" x 5'11" | 53 sq. ft | No |
| 33 | Garage | 23'3" x 26'6" | 560 sq. ft | No |
| 34 | Hall | 3'6" x 10'2" | 35 sq. ft | Yes |
| 35 | Deck | 64'9" x 18'6" | 596 sq. ft | No |

311 Morningwood Lane, Wirtz, Franklin County, Virginia, United States, 24184

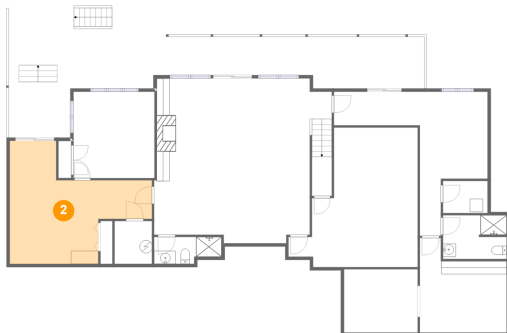
1 Floor 1 - Bedroom



Max Dimensions: 12'5" x 13'3"
Calculated Area: 164 sq. ft
Included: Yes

Heated: Yes
Finished: Yes
Enclosed: Yes
Contiguous: Yes
Permitted: Yes
Wet space: No
Addition: No
Conversion: No

2 Floor 1 - Gym

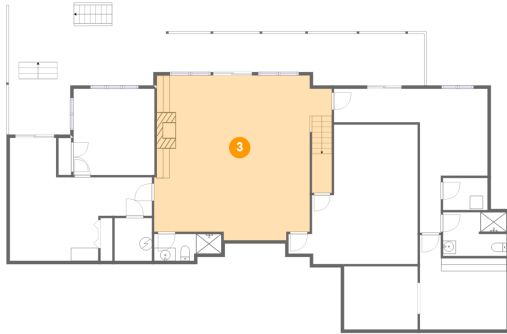


Max Dimensions: 21'9" x 18'10"
Calculated Area: 265 sq. ft
Included: Yes

Heated: Yes
Finished: Yes
Enclosed: Yes
Contiguous: Yes
Permitted: Yes
Wet space: No
Addition: No
Conversion: No

311 Morningwood Lane, Wirtz, Franklin County, Virginia, United States, 24184

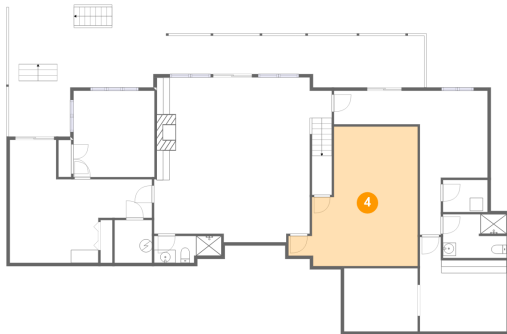
3 Floor 1 - Recreation Room



Max Dimensions: 26'10" x 25'3"
Calculated Area: 628 sq. ft
Included: Yes

Heated: Yes
Finished: Yes
Enclosed: Yes
Contiguous: Yes
Permitted: Yes
Wet space: No
Addition: No
Conversion: No

4 Floor 1 - Theatre Room



Max Dimensions: 19'10" x 21'4"
Calculated Area: 320 sq. ft
Included: Yes

Heated: Yes
Finished: Yes
Enclosed: Yes
Contiguous: Yes
Permitted: Yes
Wet space: No
Addition: No
Conversion: No

5 Floor 1 - Utility



Max Dimensions: 5'9" x 6'7"
Calculated Area: 38 sq. ft
Included: No

Heated: Yes
Finished: No
Enclosed: Yes
Contiguous: Yes
Permitted: Yes
Wet space: No
Addition: No
Conversion: No

Home report

311 Morningwood Lane, Wirtz, Franklin County, Virginia, United States, 24184

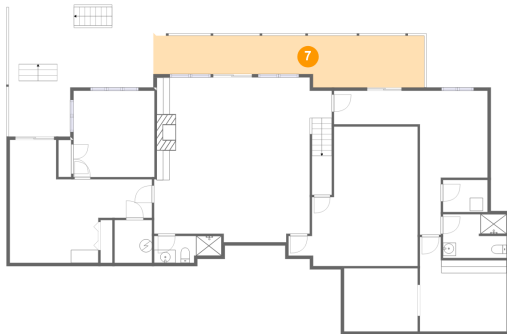
6 Floor 1 - Bedroom



Max Dimensions: 10'4" x 13'4"
Calculated Area: 138 sq. ft
Included: Yes

Heated: Yes
Finished: Yes
Enclosed: Yes
Contiguous: Yes
Permitted: Yes
Wet space: No
Addition: No
Conversion: No

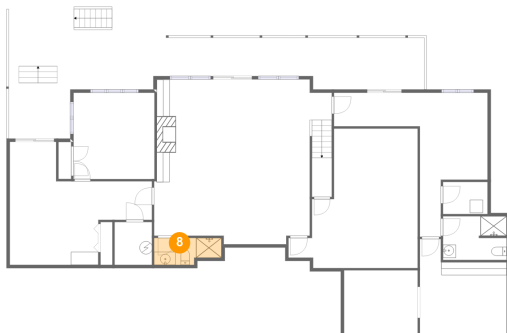
7 Floor 1 - Covered Deck



Max Dimensions: 41'6" x 7'11"
Calculated Area: 279 sq. ft
Included: No

Heated: No
Finished: Yes
Enclosed: No
Contiguous: Yes
Permitted: Yes
Wet space: No
Addition: No
Conversion: No

8 Floor 1 - Bath



Max Dimensions: 10'4" x 4'1"
Calculated Area: 38 sq. ft
Included: Yes

Heated: Yes
Finished: Yes
Enclosed: Yes
Contiguous: Yes
Permitted: Yes
Wet space: Yes
Addition: No
Conversion: No

311 Morningwood Lane, Wirtz, Franklin County, Virginia, United States, 24184

9 Floor 1 - Storage



Max Dimensions: 13'3" x 14'6"
Calculated Area: 157 sq. ft
Included: No

Heated: No
Finished: No
Enclosed: No
Contiguous: Yes
Permitted: Yes
Wet space: No
Addition: No
Conversion: No

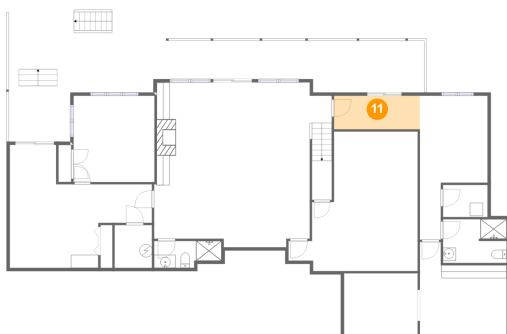
10 Floor 1 - Bath



Max Dimensions: 9'9" x 6'8"
Calculated Area: 64 sq. ft
Included: Yes

Heated: Yes
Finished: Yes
Enclosed: Yes
Contiguous: Yes
Permitted: Yes
Wet space: Yes
Addition: No
Conversion: No

11 Floor 1 - Hall

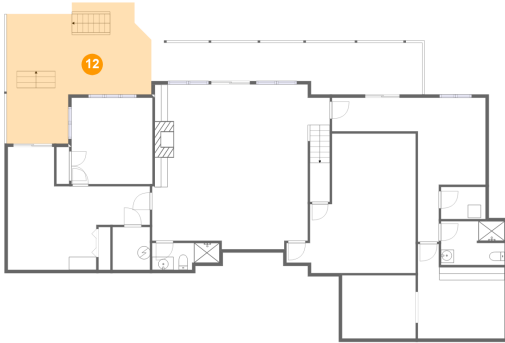


Max Dimensions: 13'2" x 5'2"
Calculated Area: 68 sq. ft
Included: Yes

Heated: Yes
Finished: Yes
Enclosed: Yes
Contiguous: Yes
Permitted: Yes
Wet space: No
Addition: No
Conversion: No

311 Morningwood Lane, Wirtz, Franklin County, Virginia, United States, 24184

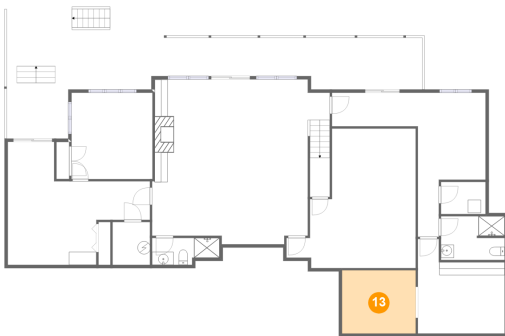
12 Floor 1 - Covered Patio



Max Dimensions: 22'2" x 19'10"
Calculated Area: 354 sq. ft
Included: No

Heated: No
Finished: Yes
Enclosed: No
Contiguous: Yes
Permitted: Yes
Wet space: No
Addition: No
Conversion: No

13 Floor 1 - Storage



Max Dimensions: 11'3" x 9'8"
Calculated Area: 109 sq. ft
Included: No

Heated: No
Finished: No
Enclosed: No
Contiguous: Yes
Permitted: Yes
Wet space: No
Addition: No
Conversion: No

14 Floor 1 - Storage



Max Dimensions: 6'10" x 4'11"
Calculated Area: 34 sq. ft
Included: No

Heated: No
Finished: No
Enclosed: No
Contiguous: No
Permitted: Yes
Wet space: No
Addition: No
Conversion: No

311 Morningwood Lane, Wirtz, Franklin County, Virginia, United States, 24184

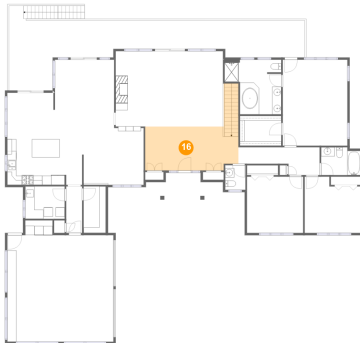
15 Floor 1 - Hall



Max Dimensions: 3'3" x 8'9"
Calculated Area: 28 sq. ft
Included: Yes

Heated: Yes
Finished: Yes
Enclosed: Yes
Contiguous: Yes
Permitted: Yes
Wet space: No
Addition: No
Conversion: No

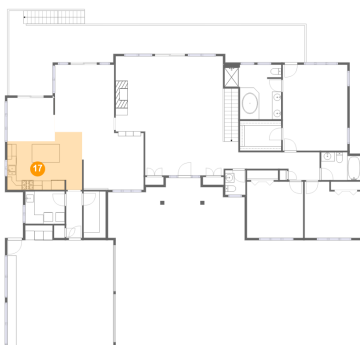
16 Floor 2 - Foyer



Max Dimensions: 20'5" x 9'7"
Calculated Area: 222 sq. ft
Included: Yes

Heated: Yes
Finished: Yes
Enclosed: Yes
Contiguous: Yes
Permitted: Yes
Wet space: No
Addition: No
Conversion: No

17 Floor 2 - Kitchen



Max Dimensions: 16'4" x 10'7"
Calculated Area: 186 sq. ft
Included: Yes

Heated: Yes
Finished: Yes
Enclosed: Yes
Contiguous: Yes
Permitted: Yes
Wet space: No
Addition: No
Conversion: No

18 Floor 2 - Laundry



Max Dimensions: 8'7" x 7'1"
Calculated Area: 61 sq. ft
Included: Yes

Heated: Yes
Finished: Yes
Enclosed: Yes
Contiguous: Yes
Permitted: Yes
Wet space: No
Addition: No
Conversion: No

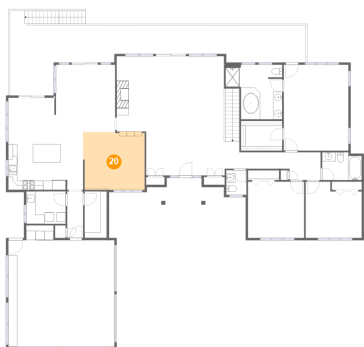
19 Floor 2 - Breakfast Nook



Max Dimensions: 10'5" x 9'6"
Calculated Area: 99 sq. ft
Included: Yes

Heated: Yes
Finished: Yes
Enclosed: Yes
Contiguous: Yes
Permitted: Yes
Wet space: No
Addition: No
Conversion: No

20 Floor 2 - Family Room

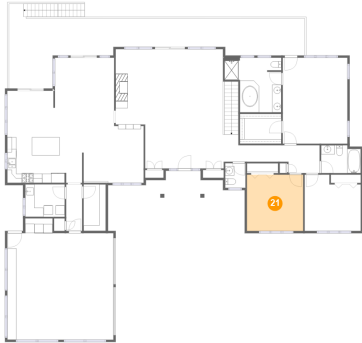


Max Dimensions: 13'6" x 12'9"
Calculated Area: 168 sq. ft
Included: Yes

Heated: Yes
Finished: Yes
Enclosed: Yes
Contiguous: Yes
Permitted: Yes
Wet space: No
Addition: No
Conversion: No

311 Morningwood Lane, Wirtz, Franklin County, Virginia, United States, 24184

21 Floor 2 - Bedroom



Max Dimensions: 12'4" x 12'4"
Calculated Area: 151 sq. ft
Included: Yes

Heated: Yes
Finished: Yes
Enclosed: Yes
Contiguous: Yes
Permitted: Yes
Wet space: No
Addition: No
Conversion: No

22 Floor 2 - Bedroom



Max Dimensions: 12'3" x 12'4"
Calculated Area: 136 sq. ft
Included: Yes

Heated: Yes
Finished: Yes
Enclosed: Yes
Contiguous: Yes
Permitted: Yes
Wet space: No
Addition: No
Conversion: No

23 Floor 2 - WC



Max Dimensions: 4'5" x 5'5"
Calculated Area: 24 sq. ft
Included: Yes

Heated: Yes
Finished: Yes
Enclosed: Yes
Contiguous: Yes
Permitted: Yes
Wet space: Yes
Addition: No
Conversion: No

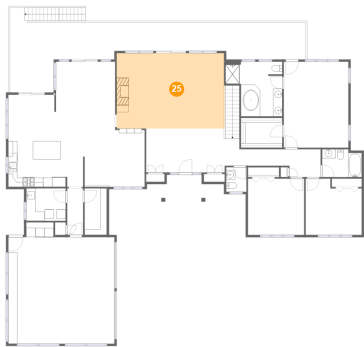
24 Floor 2 - W.I.C.



Max Dimensions: 9'1" x 6'6"
Calculated Area: 59 sq. ft
Included: Yes

Heated: Yes
Finished: Yes
Enclosed: Yes
Contiguous: Yes
Permitted: Yes
Wet space: No
Addition: No
Conversion: No

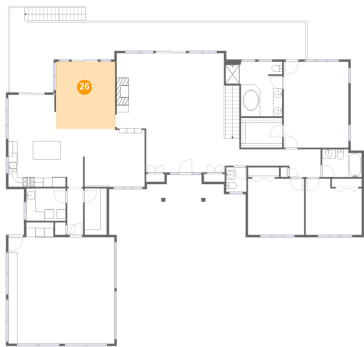
25 Floor 2 - Living Room



Max Dimensions: 23'5" x 16'6"
Calculated Area: 388 sq. ft
Included: Yes

Heated: Yes
Finished: Yes
Enclosed: Yes
Contiguous: Yes
Permitted: Yes
Wet space: No
Addition: No
Conversion: No

26 Floor 2 - Dining Area



Max Dimensions: 12'11" x 14'8"
Calculated Area: 190 sq. ft
Included: Yes

Heated: Yes
Finished: Yes
Enclosed: Yes
Contiguous: Yes
Permitted: Yes
Wet space: No
Addition: No
Conversion: No

311 Morningwood Lane, Wirtz, Franklin County, Virginia, United States, 24184

27 Floor 2 - Pantry



Max Dimensions: 4'10" x 10'2"
Calculated Area: 49 sq. ft
Included: Yes

Heated: Yes
Finished: Yes
Enclosed: Yes
Contiguous: Yes
Permitted: Yes
Wet space: No
Addition: No
Conversion: No

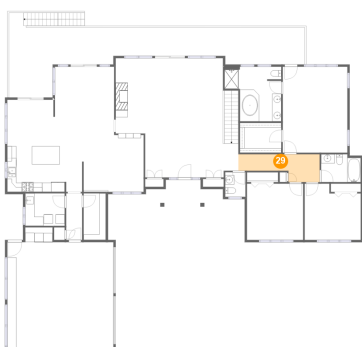
28 Floor 2 - Bath



Max Dimensions: 8'8" x 6'1"
Calculated Area: 51 sq. ft
Included: Yes

Heated: Yes
Finished: Yes
Enclosed: Yes
Contiguous: Yes
Permitted: Yes
Wet space: Yes
Addition: No
Conversion: No

29 Floor 2 - Hall

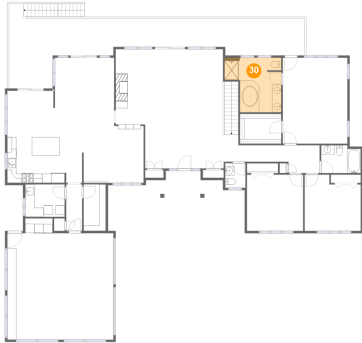


Max Dimensions: 17'9" x 6'1"
Calculated Area: 81 sq. ft
Included: Yes

Heated: Yes
Finished: Yes
Enclosed: Yes
Contiguous: Yes
Permitted: Yes
Wet space: No
Addition: No
Conversion: No

311 Morningwood Lane, Wirtz, Franklin County, Virginia, United States, 24184

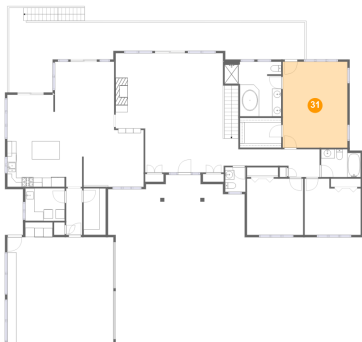
30 Floor 2 - Primary Bath



Max Dimensions: 12'5" x 11'11"
Calculated Area: 123 sq. ft
Included: Yes

Heated: Yes
Finished: Yes
Enclosed: Yes
Contiguous: Yes
Permitted: Yes
Wet space: Yes
Addition: No
Conversion: No

31 Floor 2 - Primary Bedroom



Max Dimensions: 14'2" x 18'10"
Calculated Area: 266 sq. ft
Included: Yes

Heated: Yes
Finished: Yes
Enclosed: Yes
Contiguous: Yes
Permitted: Yes
Wet space: No
Addition: No
Conversion: No

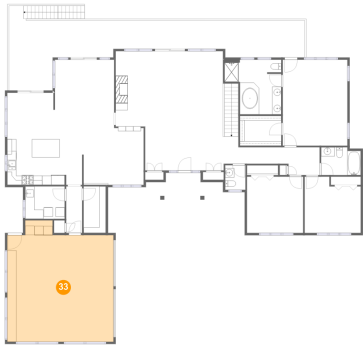
32 Floor 2 - Porch



Max Dimensions: 9'8" x 5'11"
Calculated Area: 53 sq. ft
Included: No

Heated: No
Finished: Yes
Enclosed: No
Contiguous: Yes
Permitted: Yes
Wet space: No
Addition: No
Conversion: No

33 Floor 2 - Garage



Max Dimensions: 23'3" x 26'6"
Calculated Area: 560 sq. ft
Included: No

Heated: No
Finished: No
Enclosed: Yes
Contiguous: Yes
Permitted: Yes
Wet space: No
Addition: No
Conversion: No

34 Floor 2 - Hall



Max Dimensions: 3'6" x 10'2"
Calculated Area: 35 sq. ft
Included: Yes

Heated: Yes
Finished: Yes
Enclosed: Yes
Contiguous: Yes
Permitted: Yes
Wet space: No
Addition: No
Conversion: No

35 Floor 2 - Deck



Max Dimensions: 64'9" x 18'6"
Calculated Area: 596 sq. ft
Included: No

Heated: No
Finished: Yes
Enclosed: No
Contiguous: Yes
Permitted: Yes
Wet space: No
Addition: No
Conversion: No