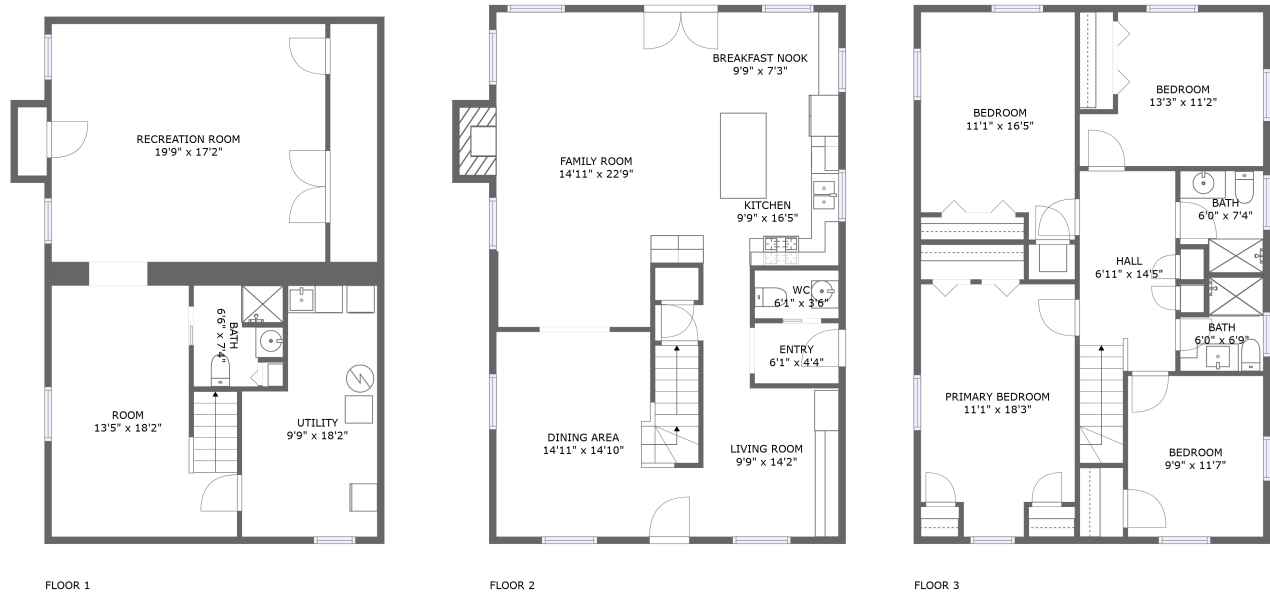


Home report

4060 Hampton Avenue, Western Springs, Cook County, Illinois,  
United States, 60558



**Total Area: 2603 sq. ft**  
Below Ground: 730 sq. ft, Floor 2: 938 sq. ft, Floor 3: 935 sq. ft  
Excluded: Utility 152 sq. ft, Fireplace 16 sq. ft, Walls: 187 sq. ft

Property summary

 **3** Floors

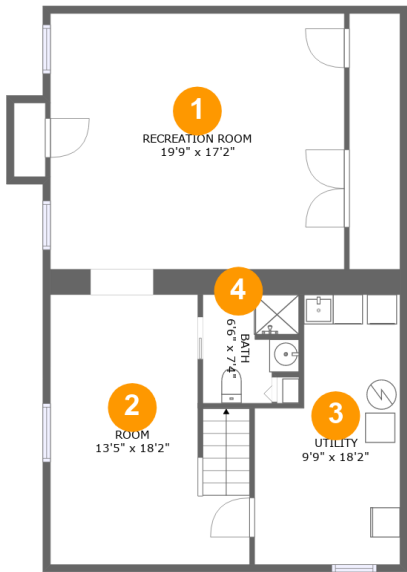
 **4** Bedrooms

 **3** Bathrooms

 **1** Half baths

Home report

4060 Hampton Avenue, Western Springs, Cook County, Illinois,  
United States, 60558



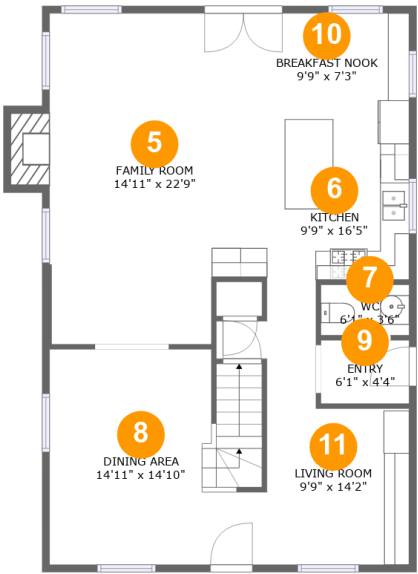
Room dimensions

Floor 1 Below ground Total:730sqft    Excluded: 152sqft

#		Max Dimensions	sqft	Included
1	Recreation Room	19'9" x 17'2"	340 sq. ft	Yes
2	Room	13'5" x 18'2"	215 sq. ft	Yes
3	Utility	9'9" x 18'2"	152 sq. ft	No
4	Bath	6'6" x 7'4"	42 sq. ft	Yes

Home report

4060 Hampton Avenue, Western Springs, Cook County, Illinois,  
United States, 60558



Room dimensions

Floor 2

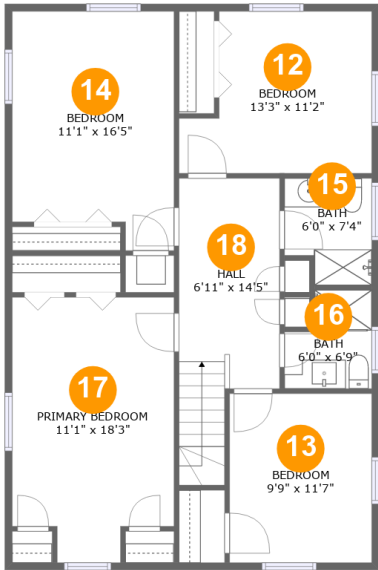
Total:938sqft

Excluded: 16sqft

#		Max Dimensions	sqft	Included
5	Family Room	14'11" x 22'9"	344 sq. ft	Yes
6	Kitchen	9'9" x 16'5"	126 sq. ft	Yes
7	WC	6'1" x 3'6"	21 sq. ft	Yes
8	Dining Area	14'11" x 14'10"	212 sq. ft	Yes
9	Entry	6'1" x 4'4"	26 sq. ft	Yes
10	Breakfast Nook	9'9" x 7'3"	71 sq. ft	Yes
11	Living Room	9'9" x 14'2"	116 sq. ft	Yes

Home report

4060 Hampton Avenue, Western Springs, Cook County, Illinois,  
United States, 60558

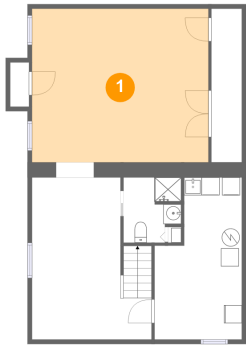


Room dimensions

Floor 3 Total:935sqft Excluded: 0sqft

#		Max Dimensions	sqft	Included
12	Bedroom	13'3" x 11'2"	127 sq. ft	Yes
13	Bedroom	9'9" x 11'7"	113 sq. ft	Yes
14	Bedroom	11'1" x 16'5"	167 sq. ft	Yes
15	Bath	6'0" x 7'4"	40 sq. ft	Yes
16	Bath	6'0" x 6'9"	35 sq. ft	Yes
17	Primary Bedroom	11'1" x 18'3"	186 sq. ft	Yes
18	Hall	6'11" x 14'5"	121 sq. ft	Yes

1 Floor 1 - Recreation Room



Max Dimensions: 19'9" x 17'2"  
Calculated Area: 340 sq. ft  
Included: Yes

Heated: Yes  
Finished: Yes  
Enclosed: Yes  
Contiguous: Yes  
Permitted: Yes  
Wet space: No  
Addition: No  
Conversion: No

2 Floor 1 - Room



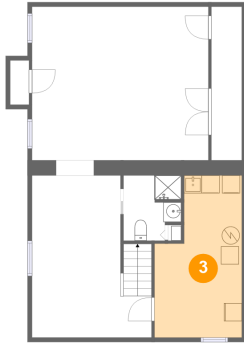
Max Dimensions: 13'5" x 18'2"  
Calculated Area: 215 sq. ft  
Included: Yes

Heated: Yes  
Finished: Yes  
Enclosed: Yes  
Contiguous: Yes  
Permitted: Yes  
Wet space: No  
Addition: No  
Conversion: No

## Home report

4060 Hampton Avenue, Western Springs, Cook County, Illinois,  
United States, 60558

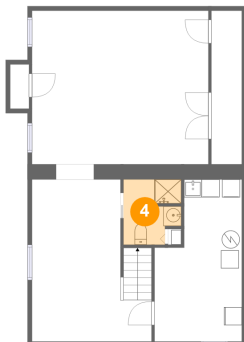
### 3 Floor 1 - Utility



Max Dimensions: 9'9" x 18'2"  
Calculated Area: 152 sq. ft  
Included: No

Heated: Yes  
Finished: No  
Enclosed: Yes  
Contiguous: Yes  
Permitted: Yes  
Wet space: No  
Addition: No  
Conversion: No

### 4 Floor 1 - Bath



Max Dimensions: 6'6" x 7'4"  
Calculated Area: 42 sq. ft  
Included: Yes

Heated: Yes  
Finished: Yes  
Enclosed: Yes  
Contiguous: Yes  
Permitted: Yes  
Wet space: Yes  
Addition: No  
Conversion: No

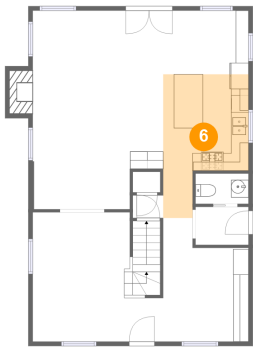
### 5 Floor 2 - Family Room



Max Dimensions: 14'11" x 22'9"  
Calculated Area: 344 sq. ft  
Included: Yes

Heated: Yes  
Finished: Yes  
Enclosed: Yes  
Contiguous: Yes  
Permitted: Yes  
Wet space: No  
Addition: No  
Conversion: No

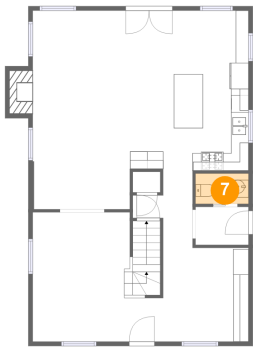
6 Floor 2 - Kitchen



Max Dimensions: 9'9" x 16'5"  
Calculated Area: 126 sq. ft  
Included: Yes

Heated: Yes  
Finished: Yes  
Enclosed: Yes  
Contiguous: Yes  
Permitted: Yes  
Wet space: No  
Addition: No  
Conversion: No

7 Floor 2 - WC



Max Dimensions: 6'1" x 3'6"  
Calculated Area: 21 sq. ft  
Included: Yes

Heated: Yes  
Finished: Yes  
Enclosed: Yes  
Contiguous: Yes  
Permitted: Yes  
Wet space: Yes  
Addition: No  
Conversion: No

8 Floor 2 - Dining Area



Max Dimensions: 14'11" x 14'10"  
Calculated Area: 212 sq. ft  
Included: Yes

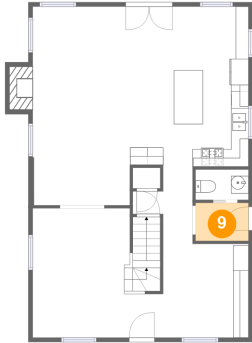
Heated: Yes  
Finished: Yes  
Enclosed: Yes  
Contiguous: Yes  
Permitted: Yes  
Wet space: No  
Addition: No  
Conversion: No

## Home report

4060 Hampton Avenue, Western Springs, Cook County, Illinois,  
United States, 60558

### 9 Floor 2 - Entry

---

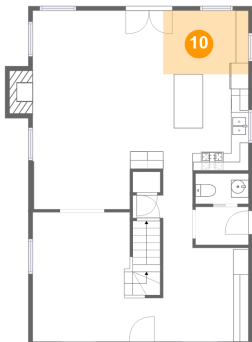


Max Dimensions: 6'1" x 4'4"  
Calculated Area: 26 sq. ft  
Included: Yes

Heated: Yes  
Finished: Yes  
Enclosed: Yes  
Contiguous: Yes  
Permitted: Yes  
Wet space: No  
Addition: No  
Conversion: No

### 10 Floor 2 - Breakfast Nook

---

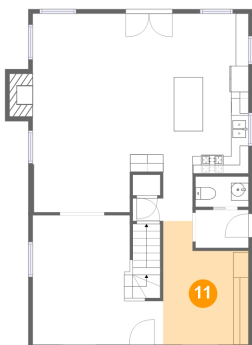


Max Dimensions: 9'9" x 7'3"  
Calculated Area: 71 sq. ft  
Included: Yes

Heated: Yes  
Finished: Yes  
Enclosed: Yes  
Contiguous: Yes  
Permitted: Yes  
Wet space: No  
Addition: No  
Conversion: No

### 11 Floor 2 - Living Room

---

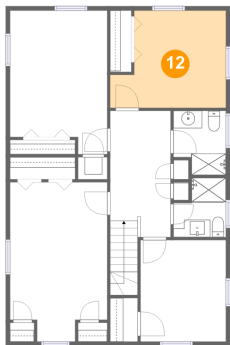


Max Dimensions: 9'9" x  
14'2"  
Calculated Area: 116 sq. ft  
Included: Yes

Heated: Yes  
Finished: Yes  
Enclosed: Yes  
Contiguous:  
Yes  
Permitted: Yes  
Wet space: No  
Addition: No  
Conversion: No



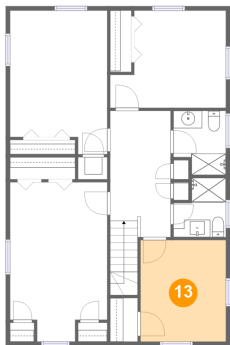
12 Floor 3 - Bedroom



Max Dimensions: 13'3" x 11'2"  
Calculated Area: 127 sq. ft  
Included: Yes

Heated: Yes  
Finished: Yes  
Enclosed: Yes  
Contiguous: Yes  
Permitted: Yes  
Wet space: No  
Addition: No  
Conversion: No

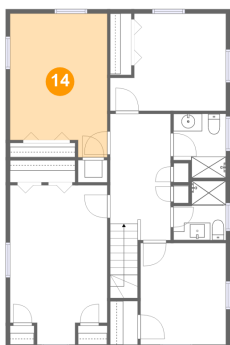
13 Floor 3 - Bedroom



Max Dimensions: 9'9" x 11'7"  
Calculated Area: 113 sq. ft  
Included: Yes

Heated: Yes  
Finished: Yes  
Enclosed: Yes  
Contiguous: Yes  
Permitted: Yes  
Wet space: No  
Addition: No  
Conversion: No

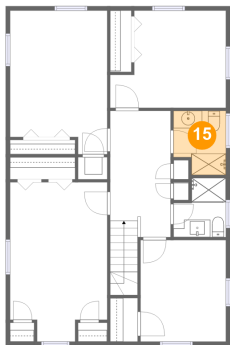
14 Floor 3 - Bedroom



Max Dimensions: 11'1" x 16'5"  
Calculated Area: 167 sq. ft  
Included: Yes

Heated: Yes  
Finished: Yes  
Enclosed: Yes  
Contiguous: Yes  
Permitted: Yes  
Wet space: No  
Addition: No  
Conversion: No

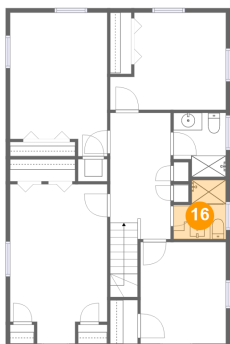
15 Floor 3 - Bath



Max Dimensions: 6'0" x 7'4"  
Calculated Area: 40 sq. ft  
Included: Yes

Heated: Yes  
Finished: Yes  
Enclosed: Yes  
Contiguous: Yes  
Permitted: Yes  
Wet space: Yes  
Addition: No  
Conversion: No

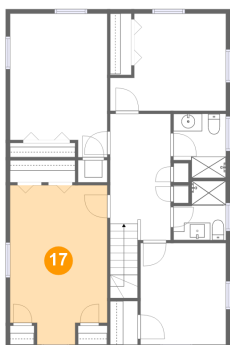
16 Floor 3 - Bath



Max Dimensions: 6'0" x 6'9"  
Calculated Area: 35 sq. ft  
Included: Yes

Heated: Yes  
Finished: Yes  
Enclosed: Yes  
Contiguous: Yes  
Permitted: Yes  
Wet space: Yes  
Addition: No  
Conversion: No

17 Floor 3 - Primary Bedroom

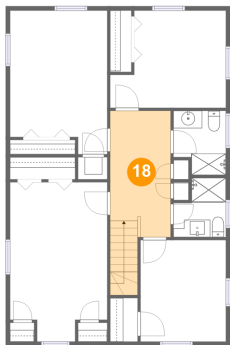


Max Dimensions: 11'1" x 18'3"  
Calculated Area: 186 sq. ft  
Included: Yes

Heated: Yes  
Finished: Yes  
Enclosed: Yes  
Contiguous: Yes  
Permitted: Yes  
Wet space: No  
Addition: No  
Conversion: No

4060 Hampton Avenue, Western Springs, Cook County, Illinois,  
United States, 60558

**18** Floor 3 - Hall



Max Dimensions: 6'11" x 14'5"  
Calculated Area: 121 sq. ft  
Included: Yes

Heated: Yes  
Finished: Yes  
Enclosed: Yes  
Contiguous: Yes  
Permitted: Yes  
Wet space: No  
Addition: No  
Conversion: No