

Home report


3218 Wetterhorn Drive, Dakota Ridge, Fort Collins, Larimer County, Colorado, United States, 80525




Property summary

 **0** Garages

 **4** Bedrooms

 **2** Bathrooms

 **2** Half baths

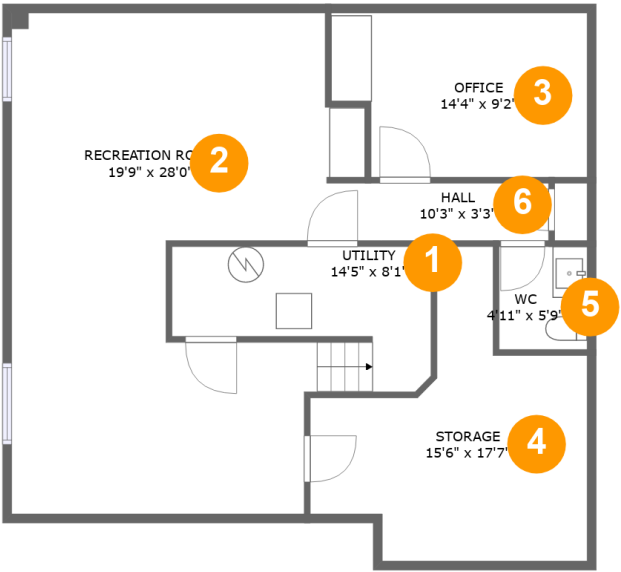
 **3** Floors

 **3,139** Gross living area sqft

 **3,710** Total sqft

Home report

3218 Wetterhorn Drive, Dakota Ridge, Fort Collins, Larimer County, Colorado, United States, 80525



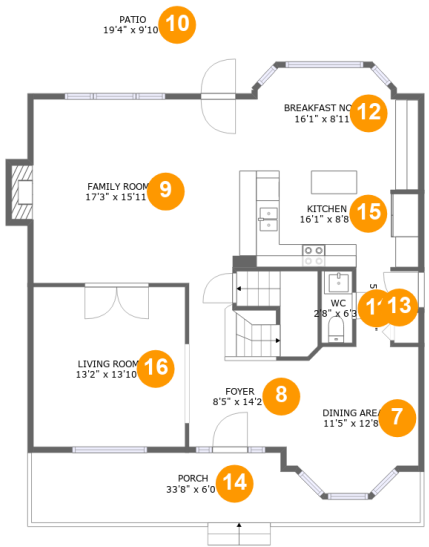
Room dimensions

Floor 1 Total sqft: 993 Living area: 808

#		Max Dimensions	sqft	Included
1	Utility	14'5" x 8'1"	83 sq. ft	Yes
2	Recreation Room	19'9" x 28'0"	454 sq. ft	Yes
3	Office	14'4" x 9'2"	122 sq. ft	Yes
4	Storage	15'6" x 17'7"	170 sq. ft	No
5	WC	4'11" x 5'9"	28 sq. ft	Yes
6	Hall	10'3" x 3'3"	33 sq. ft	Yes

Home report

3218 Wetterhorn Drive, Dakota Ridge, Fort Collins, Larimer County, Colorado, United States, 80525



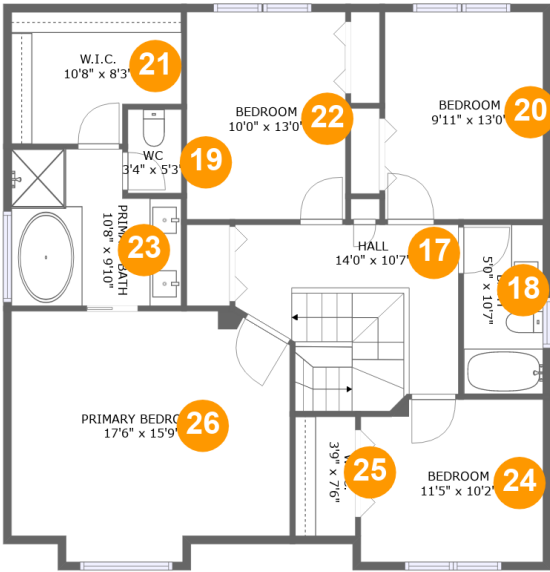
Room dimensions

Floor 2Total sqft: 1520 Living area: 1134

#		Max Dimensions	sqft	Included
7	Dining Area	11'5" x 12'8"	130 sq. ft	Yes
8	Foyer	8'5" x 14'2"	143 sq. ft	Yes
9	Family Room	17'3" x 15'11"	283 sq. ft	Yes
10	Patio	19'4" x 9'10"	192 sq. ft	No
11	WC	2'8" x 6'3"	17 sq. ft	Yes
12	Breakfast Nook	16'1" x 8'11"	128 sq. ft	Yes
13	Hall	5'5" x 6'7"	27 sq. ft	Yes
14	Porch	33'8" x 6'0"	183 sq. ft	No
15	Kitchen	16'1" x 8'8"	138 sq. ft	Yes
16	Living Room	13'2" x 13'10"	182 sq. ft	Yes

Home report

3218 Wetterhorn Drive, Dakota Ridge, Fort Collins, Larimer County, Colorado, United States, 80525



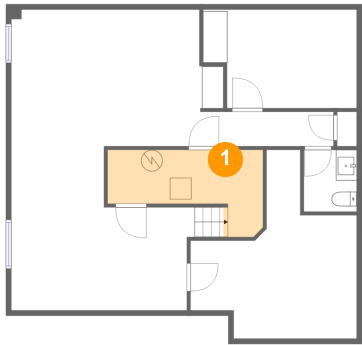
Room dimensions

Floor 3 Total sqft: 1197 Living area: 1197

#		Max Dimensions	sqft	Included
17	Hall	14'0" x 10'7"	139 sq. ft	Yes
18	Bath	5'0" x 10'7"	53 sq. ft	Yes
19	WC	3'4" x 5'3"	18 sq. ft	Yes
20	Bedroom	9'11" x 13'0"	129 sq. ft	Yes
21	W.I.C.	10'8" x 8'3"	79 sq. ft	Yes
22	Bedroom	10'0" x 13'0"	129 sq. ft	Yes
23	Primary Bath	10'8" x 9'10"	93 sq. ft	Yes
24	Bedroom	11'5" x 10'2"	114 sq. ft	Yes
25	W.I.C.	3'9" x 7'6"	28 sq. ft	Yes
26	Primary Bedroom	17'6" x 15'9"	254 sq. ft	Yes

3218 Wetterhorn Drive, Dakota Ridge, Fort Collins, Larimer
County, Colorado, United States, 80525

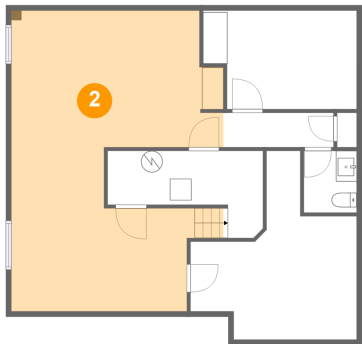
1 Floor 1 - Utility



Max Dimensions: 14'5" x 8'1"
Calculated Area: 83 sq. ft
Included: Yes

Heated: Yes
Finished: Yes
Enclosed: Yes
Contiguous: Yes
Permitted: Yes
Wet space: No
Addition: No
Conversion: No

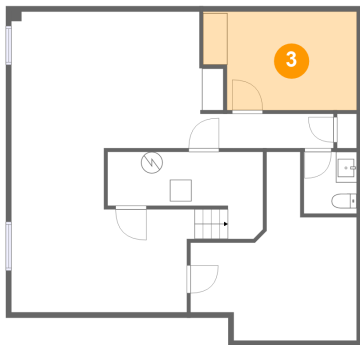
2 Floor 1 - Recreation Room



Max Dimensions: 19'9" x 28'0"
Calculated Area: 454 sq. ft
Included: Yes

Heated: Yes
Finished: Yes
Enclosed: Yes
Contiguous: Yes
Permitted: Yes
Wet space: No
Addition: No
Conversion: No

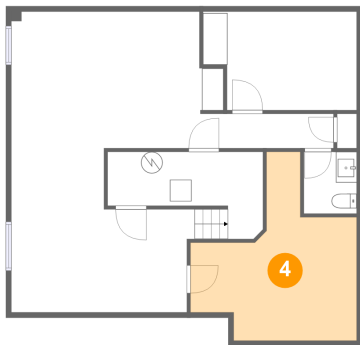
3 Floor 1 - Office



Max Dimensions: 14'4" x 9'2"
Calculated Area: 122 sq. ft
Included: Yes

Heated: Yes
Finished: Yes
Enclosed: Yes
Contiguous: Yes
Permitted: Yes
Wet space: No
Addition: No
Conversion: No

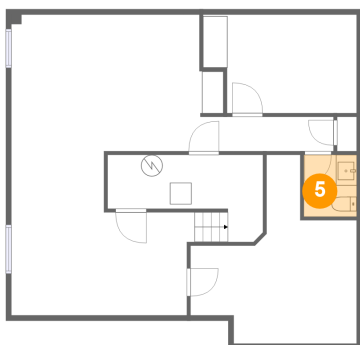
4 Floor 1 - Storage



Max Dimensions: 15'6" x 17'7"
Calculated Area: 170 sq. ft
Included: No

Heated: No
Finished: No
Enclosed: No
Contiguous: Yes
Permitted: Yes
Wet space: No
Addition: No
Conversion: No

5 Floor 1 - WC

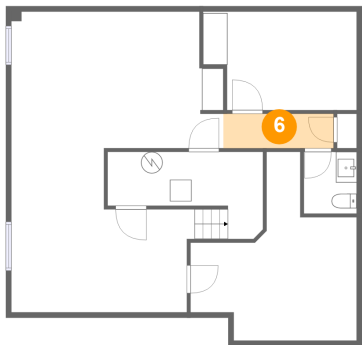


Max Dimensions: 4'11" x 5'9"
Calculated Area: 28 sq. ft
Included: Yes

Heated: Yes
Finished: Yes
Enclosed: Yes
Contiguous: Yes
Permitted: Yes
Wet space: Yes
Addition: No
Conversion: No

3218 Wetterhorn Drive, Dakota Ridge, Fort Collins, Larimer
County, Colorado, United States, 80525

6 Floor 1 - Hall



Max Dimensions: 10'3" x 3'3"
Calculated Area: 33 sq. ft
Included: Yes

Heated: Yes
Finished: Yes
Enclosed: Yes
Contiguous: Yes
Permitted: Yes
Wet space: No
Addition: No
Conversion: No

7 Floor 2 - Dining Area



Max Dimensions: 11'5" x 12'8"
Calculated Area: 130 sq. ft
Included: Yes

Heated: Yes
Finished: Yes
Enclosed: Yes
Contiguous: Yes
Permitted: Yes
Wet space: No
Addition: No
Conversion: No

8 Floor 2 - Foyer

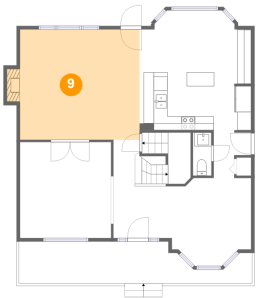


Max Dimensions: 8'5" x 14'2"
Calculated Area: 143 sq. ft
Included: Yes

Heated: Yes
Finished: Yes
Enclosed: Yes
Contiguous: Yes
Permitted: Yes
Wet space: No
Addition: No
Conversion: No

3218 Wetterhorn Drive, Dakota Ridge, Fort Collins, Larimer County, Colorado, United States, 80525

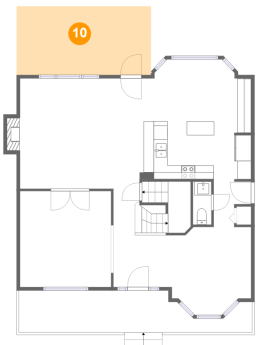
9 Floor 2 - Family Room



Max Dimensions: 17'3" x 15'11"
Calculated Area: 283 sq. ft
Included: Yes

Heated: Yes
Finished: Yes
Enclosed: Yes
Contiguous: Yes
Permitted: Yes
Wet space: No
Addition: No
Conversion: No

10 Floor 2 - Patio



Max Dimensions: 19'4" x 9'10"
Calculated Area: 192 sq. ft
Included: No

Heated: No
Finished: Yes
Enclosed: No
Contiguous: Yes
Permitted: Yes
Wet space: No
Addition: No
Conversion: No

11 Floor 2 - WC



Max Dimensions: 2'8" x 6'3"
Calculated Area: 17 sq. ft
Included: Yes

Heated: Yes
Finished: Yes
Enclosed: Yes
Contiguous: Yes
Permitted: Yes
Wet space: Yes
Addition: No
Conversion: No

3218 Wetterhorn Drive, Dakota Ridge, Fort Collins, Larimer County, Colorado, United States, 80525

12 Floor 2 - Breakfast Nook



Max Dimensions: 16'1" x 8'11"
Calculated Area: 128 sq. ft
Included: Yes

Heated: Yes
Finished: Yes
Enclosed: Yes
Contiguous: Yes
Permitted: Yes
Wet space: No
Addition: No
Conversion: No

13 Floor 2 - Hall



Max Dimensions: 5'5" x 6'7"
Calculated Area: 27 sq. ft
Included: Yes

Heated: Yes
Finished: Yes
Enclosed: Yes
Contiguous: Yes
Permitted: Yes
Wet space: No
Addition: No
Conversion: No

14 Floor 2 - Porch



Max Dimensions: 33'8" x 6'0"
Calculated Area: 183 sq. ft
Included: No

Heated: No
Finished: Yes
Enclosed: No
Contiguous: Yes
Permitted: Yes
Wet space: No
Addition: No
Conversion: No

Home report

3218 Wetterhorn Drive, Dakota Ridge, Fort Collins, Larimer County, Colorado, United States, 80525

15 Floor 2 - Kitchen



Max Dimensions: 16'1" x 8'8"
Calculated Area: 138 sq. ft
Included: Yes

Heated: Yes
Finished: Yes
Enclosed: Yes
Contiguous: Yes
Permitted: Yes
Wet space: No
Addition: No
Conversion: No

16 Floor 2 - Living Room



Max Dimensions: 13'2" x 13'10"
Calculated Area: 182 sq. ft
Included: Yes

Heated: Yes
Finished: Yes
Enclosed: Yes
Contiguous: Yes
Permitted: Yes
Wet space: No
Addition: No
Conversion: No

17 Floor 3 - Hall

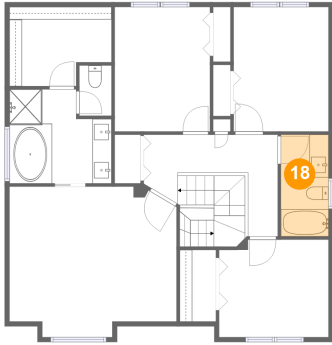


Max Dimensions: 14'0" x 10'7"
Calculated Area: 139 sq. ft
Included: Yes

Heated: Yes
Finished: Yes
Enclosed: Yes
Contiguous: Yes
Permitted: Yes
Wet space: No
Addition: No
Conversion: No

3218 Wetterhorn Drive, Dakota Ridge, Fort Collins, Larimer
County, Colorado, United States, 80525

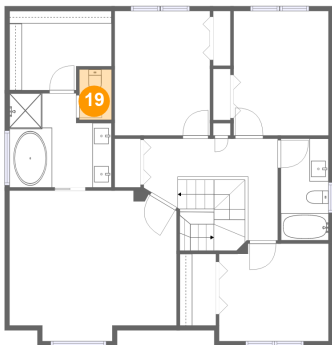
18 Floor 3 - Bath



Max Dimensions: 5'0" x 10'7"
Calculated Area: 53 sq. ft
Included: Yes

Heated: Yes
Finished: Yes
Enclosed: Yes
Contiguous: Yes
Permitted: Yes
Wet space: Yes
Addition: No
Conversion: No

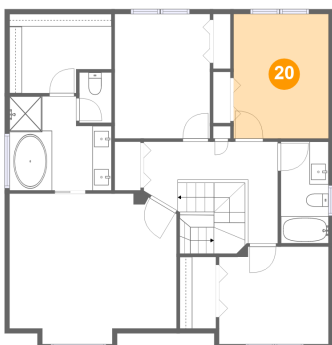
19 Floor 3 - WC



Max Dimensions: 3'4" x 5'3"
Calculated Area: 18 sq. ft
Included: Yes

Heated: Yes
Finished: Yes
Enclosed: Yes
Contiguous: Yes
Permitted: Yes
Wet space: Yes
Addition: No
Conversion: No

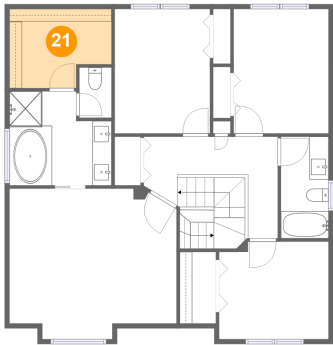
20 Floor 3 - Bedroom



Max Dimensions: 9'11" x 13'0"
Calculated Area: 129 sq. ft
Included: Yes

Heated: Yes
Finished: Yes
Enclosed: Yes
Contiguous: Yes
Permitted: Yes
Wet space: No
Addition: No
Conversion: No

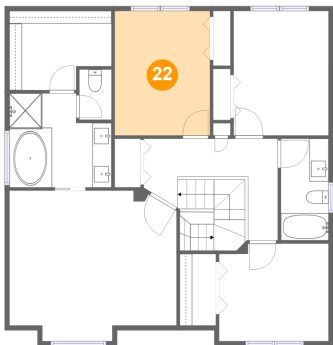
21 Floor 3 - W.I.C.



Max Dimensions: 10'8" x 8'3"
Calculated Area: 79 sq. ft
Included: Yes

Heated: Yes
Finished: Yes
Enclosed: Yes
Contiguous: Yes
Permitted: Yes
Wet space: No
Addition: No
Conversion: No

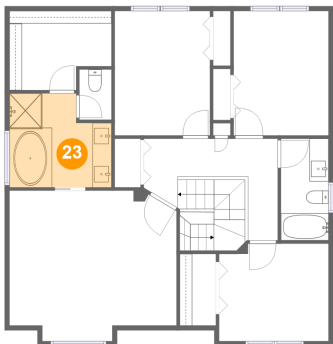
22 Floor 3 - Bedroom



Max Dimensions: 10'0" x 13'0"
Calculated Area: 129 sq. ft
Included: Yes

Heated: Yes
Finished: Yes
Enclosed: Yes
Contiguous: Yes
Permitted: Yes
Wet space: No
Addition: No
Conversion: No

23 Floor 3 - Primary Bath



Max Dimensions: 10'8" x 9'10"
Calculated Area: 93 sq. ft
Included: Yes

Heated: Yes
Finished: Yes
Enclosed: Yes
Contiguous: Yes
Permitted: Yes
Wet space: Yes
Addition: No
Conversion: No

3218 Wetterhorn Drive, Dakota Ridge, Fort Collins, Larimer
County, Colorado, United States, 80525

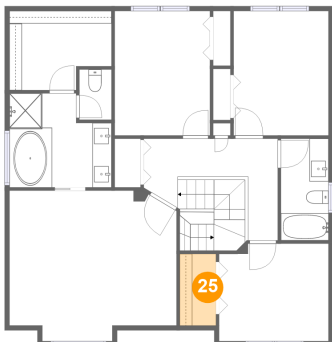
24 Floor 3 - Bedroom



Max Dimensions: 11'5" x 10'2"
Calculated Area: 114 sq. ft
Included: Yes

Heated: Yes
Finished: Yes
Enclosed: Yes
Contiguous: Yes
Permitted: Yes
Wet space: No
Addition: No
Conversion: No

25 Floor 3 - W.I.C.



Max Dimensions: 3'9" x 7'6"
Calculated Area: 28 sq. ft
Included: Yes

Heated: Yes
Finished: Yes
Enclosed: Yes
Contiguous: Yes
Permitted: Yes
Wet space: No
Addition: No
Conversion: No

26 Floor 3 - Primary Bedroom



Max Dimensions: 17'6" x 15'9"
Calculated Area: 254 sq. ft
Included: Yes

Heated: Yes
Finished: Yes
Enclosed: Yes
Contiguous: Yes
Permitted: Yes
Wet space: No
Addition: No
Conversion: No