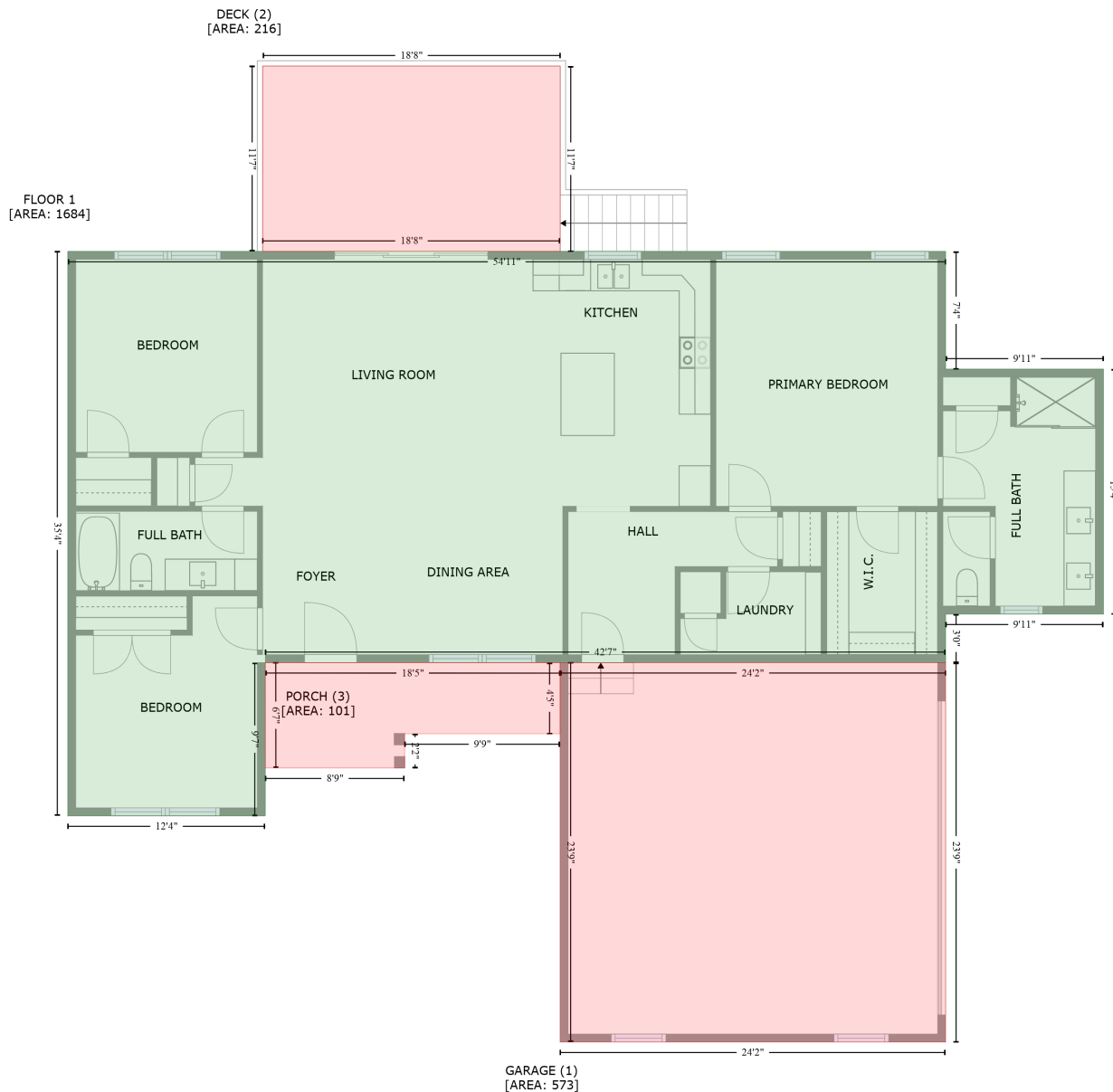


# 2572 Maiden Salem Road, Maiden, Lincoln County, North Carolina, United States, 28650

Gross Living Area: 1684 sq. ft



Space	Area (sq. ft)	Calculation <small>Coordinate Polygon Area Algorithm using inches</small>
FLOOR 1 (Living area)	1684	$-((668 + 668) * (236.4 - 324.8) + (668 + 786.6) * (324.8 - 324.8) + (786.6 + 786.6) * (324.8 - 508.8) + (786.6 + 668) * (508.8 - 508.8) + (668 + 668) * (508.8 - 545.2) + (668 + 157) * (545.2 - 545.2) + (157 + 157) * (545.2 - 660.3) + (157 + 8.7) * (660.3 - 660.3) + (8.7 + 8.7) * (660.3 - 236.4) + (8.7 + 668) * (236.4 - 236.4)) * 0.5 + 0.00694$
GARAGE (Non-living area)	573	$-((668 + 668) * (545.2 - 830.3) + (668 + 378.5) * (830.3 - 830.3) + (378.5 + 378.5) * (830.3 - 545.2) + (378.5 + 668) * (545.2 - 545.2)) * 0.5 + 0.00694$

# 2572 Maiden Salem Road, Maiden, Lincoln County, North Carolina, United States, 28650

Gross Living Area: 1684 sq. ft

Space	Area (sq. ft)	Calculation <small>Coordinate Polygon Area Algorithm using inches</small>
DECK (Non-living area)	216	$-((378.6 + 378.6) * (97.2 - 236.4) + (378.6 + 155) * (236.4 - 236.4) + (155 + 155) * (236.4 - 97.2) + (155 + 378.6) * (97.2 - 97.2)) * 0.5 * 0.00694$
PORCH (Non-living area)	101	$-((157 + 378.4) * (545.2 - 545.3) + (378.4 + 378.4) * (545.3 - 598.7) + (378.4 + 261.7) * (598.7 - 598.7) + (261.7 + 261.7) * (598.7 - 624.4) + (261.7 + 157.1) * (624.4 - 624.4) + (157.1 + 157) * (624.4 - 545.2)) * 0.5 * 0.00694$