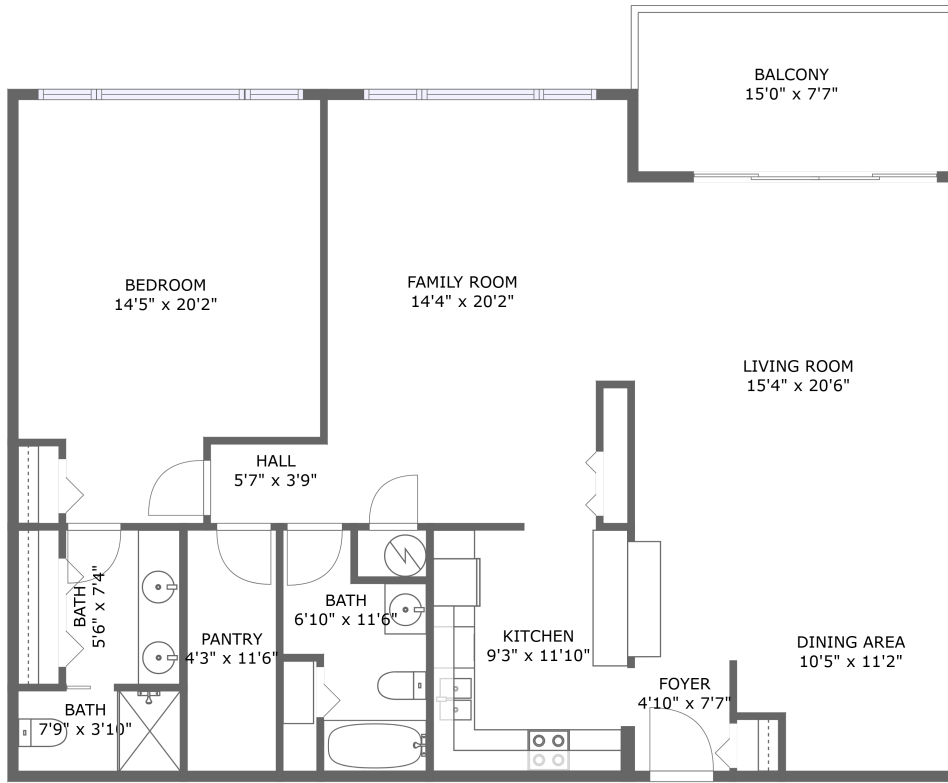


675 South Gulfview Boulevard, Clearwater Beach, Pinellas County, Florida, United States,



FLOOR 1

Property Summary



1 floors



1 bedrooms



2 bathrooms



1,475 total sqft

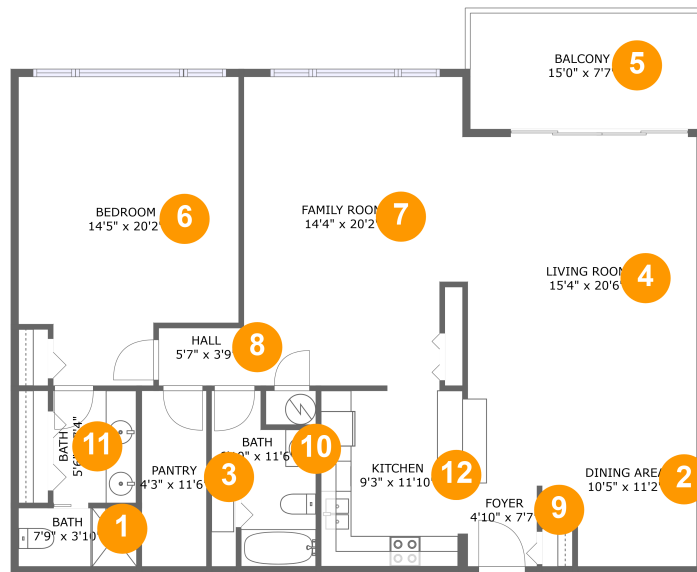


0 garages



1,361 Gross Living Area sqft

675 South Gulfview Boulevard, Clearwater Beach, Pinellas County, Florida, United States,



Room Dimensions

Floor 1

Total sqft: 1475

Living area: 1361

| # | Room name | Dimensions | Area (sqft) | Counted as Living Area |
|----|-------------|---------------|-------------|------------------------|
| 1 | Bath | 7'9" x 3'10" | 30 sq. ft | Yes |
| 2 | Dining Area | 10'5" x 11'2" | 102 sq. ft | Yes |
| 3 | Pantry | 4'3" x 11'6" | 49 sq. ft | Yes |
| 4 | Living Room | 15'4" x 20'6" | 283 sq. ft | Yes |
| 5 | Balcony | 15'0" x 7'7" | 114 sq. ft | No |
| 6 | Bedroom | 14'5" x 20'2" | 259 sq. ft | Yes |
| 7 | Family Room | 14'4" x 20'2" | 279 sq. ft | Yes |
| 8 | Hall | 5'7" x 3'9" | 21 sq. ft | Yes |
| 9 | Foyer | 4'10" x 7'7" | 36 sq. ft | Yes |
| 10 | Bath | 6'10" x 11'6" | 58 sq. ft | Yes |
| 11 | Bath | 5'6" x 7'4" | 40 sq. ft | Yes |

Scan captured on Wed, 08 May 2024 18:46:36 GMT

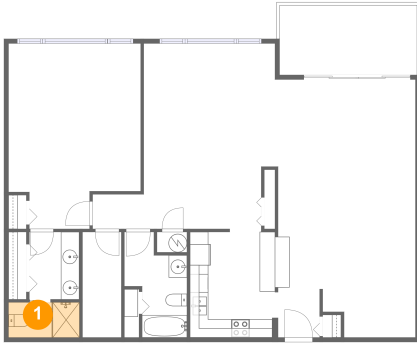
Information is calculated by CubiCasa technology; deemed highly reliable but not guaranteed.

**675 South Gulfview Boulevard, Clearwater
Beach, Pinellas County, Florida, United States,**

| # | Room name | Dimensions | Area (sqft) | Counted as Living Area |
|----|-----------|---------------|-------------|------------------------|
| 12 | Kitchen | 9'3" x 11'10" | 107 sq. ft | Yes |

675 South Gulfview Boulevard, Clearwater Beach, Pinellas County, Florida, United States,

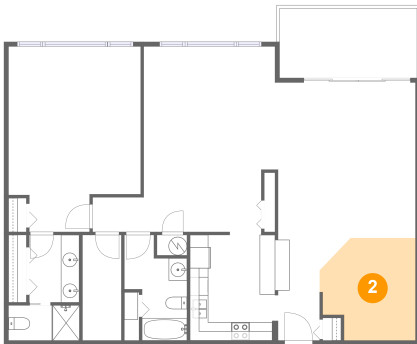
1 Floor 1 - Bath



Dimensions: 7'9" x 3'10"
Area: 30 sq. ft
Counted as Living Area:
Yes

Heated: Yes
Finished: Yes
Enclosed: Yes
Contiguous:
Yes
Permitted: Yes
Wet Space: Yes
Addition: No
Conversion: No

2 Floor 1 - Dining Area

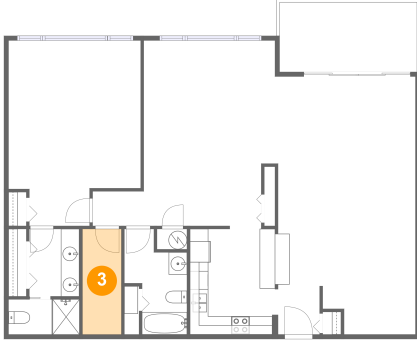


Dimensions: 10'5" x 11'2"
Area: 102 sq. ft
Counted as Living Area:
Yes

Heated: Yes
Finished: Yes
Enclosed: Yes
Contiguous:
Yes
Permitted: Yes
Wet Space: No
Addition: No
Conversion: No

675 South Gulfview Boulevard, Clearwater Beach, Pinellas County, Florida, United States,

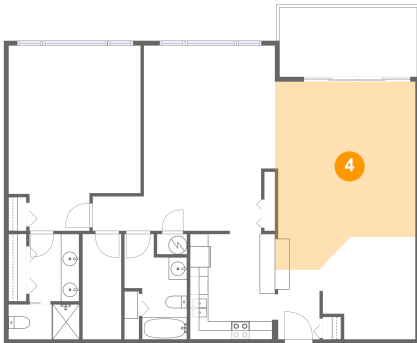
3 Floor 1 - Pantry



Dimensions: 4'3" x 11'6"
Area: 49 sq. ft
Counted as Living Area:
Yes

Heated: Yes
Finished: Yes
Enclosed: Yes
Contiguous:
Yes
Permitted: Yes
Wet Space: No
Addition: No
Conversion: No

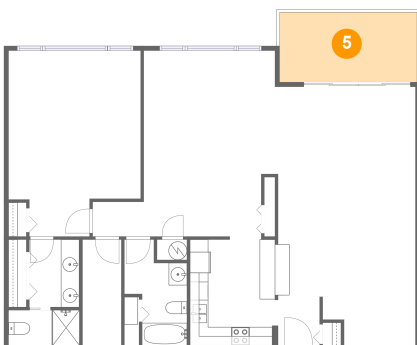
4 Floor 1 - Living Room



Dimensions: 15'4" x 20'6"
Area: 283 sq. ft
Counted as Living Area:
Yes

Heated: Yes
Finished: Yes
Enclosed: Yes
Contiguous:
Yes
Permitted: Yes
Wet Space: No
Addition: No
Conversion: No

5 Floor 1 - Balcony

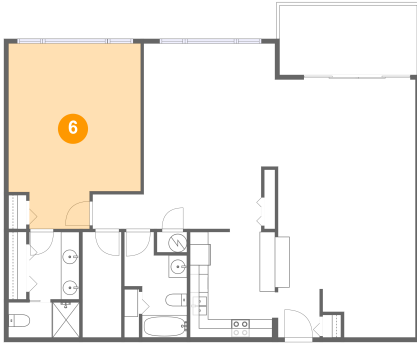


Dimensions: 15'0" x 7'7"
Area: 114 sq. ft
Counted as Living Area: No

Heated: No
Finished: No
Enclosed: No
Contiguous: Yes
Permitted: Yes
Wet Space: No
Addition: No
Conversion: No

675 South Gulfview Boulevard, Clearwater Beach, Pinellas County, Florida, United States,

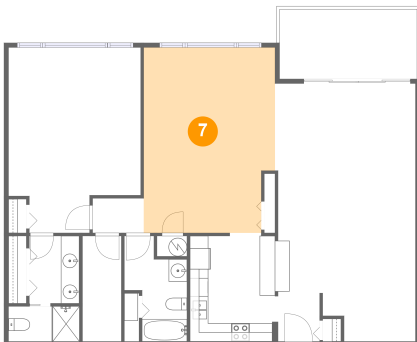
6 Floor 1 - Bedroom



Dimensions: 14'5" x 20'2"
Area: 259 sq. ft
Counted as Living Area:
Yes

Heated: Yes
Finished: Yes
Enclosed: Yes
Contiguous:
Yes
Permitted: Yes
Wet Space: No
Addition: No
Conversion: No

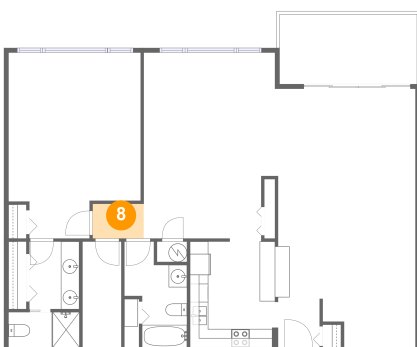
7 Floor 1 - Family Room



Dimensions: 14'4" x 20'2"
Area: 279 sq. ft
Counted as Living Area:
Yes

Heated: Yes
Finished: Yes
Enclosed: Yes
Contiguous:
Yes
Permitted: Yes
Wet Space: No
Addition: No
Conversion: No

8 Floor 1 - Hall

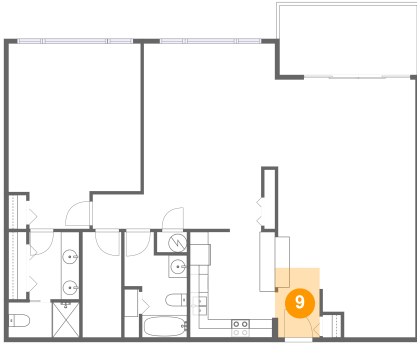


Dimensions: 5'7" x 3'9"
Area: 21 sq. ft
Counted as Living Area:
Yes

Heated: Yes
Finished: Yes
Enclosed: Yes
Contiguous:
Yes
Permitted: Yes
Wet Space: No
Addition: No
Conversion: No

675 South Gulfview Boulevard, Clearwater Beach, Pinellas County, Florida, United States,

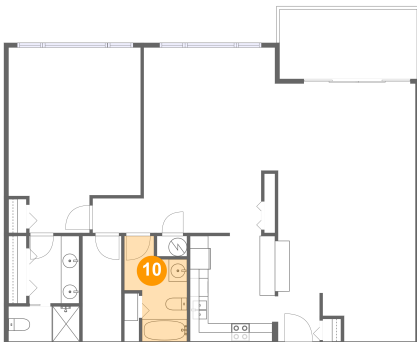
9 Floor 1 - Foyer



Dimensions: 4'10" x 7'7"
Area: 36 sq. ft
Counted as Living Area:
Yes

Heated: Yes
Finished: Yes
Enclosed: Yes
Contiguous:
Yes
Permitted: Yes
Wet Space: No
Addition: No
Conversion: No

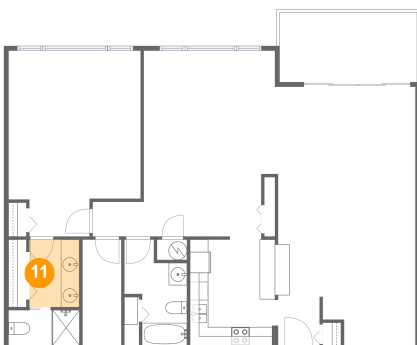
10 Floor 1 - Bath



Dimensions: 6'10" x 11'6"
Area: 58 sq. ft
Counted as Living Area:
Yes

Heated: Yes
Finished: Yes
Enclosed: Yes
Contiguous:
Yes
Permitted: Yes
Wet Space: Yes
Addition: No
Conversion: No

11 Floor 1 - Bath

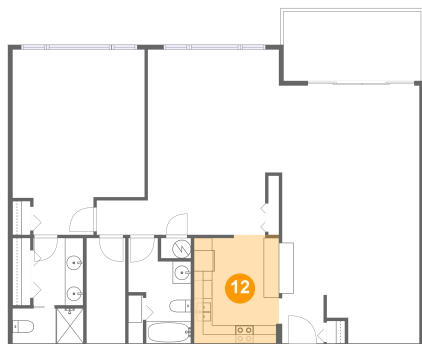


Dimensions: 5'6" x 7'4"
Area: 40 sq. ft
Counted as Living Area:
Yes

Heated: Yes
Finished: Yes
Enclosed: Yes
Contiguous:
Yes
Permitted: Yes
Wet Space: Yes
Addition: No
Conversion: No

675 South Gulfview Boulevard, Clearwater Beach, Pinellas County, Florida, United States,

12 Floor 1 - Kitchen



Dimensions: 9'3" x 11'10"

Area: 107 sq. ft

Counted as Living Area:
Yes

Heated: Yes

Finished: Yes

Enclosed: Yes

Contiguous:
Yes

Permitted: Yes

Wet Space: No

Addition: No

Conversion: No