



Home report


129 Stratford Drive, Buffalo Township, Sarver, Butler County, Pennsylvania, United States, 16055




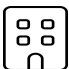
Property summary


 **1** Garages


 **4** Bedrooms

 **3** Bathrooms

 **1** Half baths

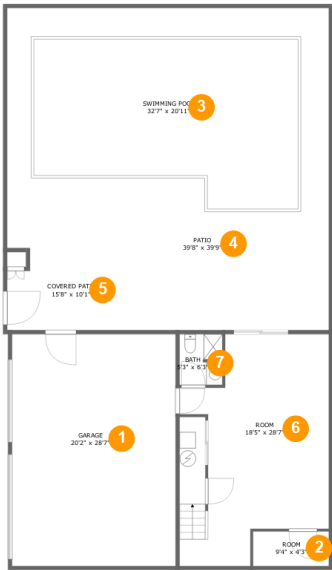
 **3** Floors

 **2,374** Gross living area sqft

 **4,944** Total sqft

Home report

129 Stratford Drive, Buffalo Township, Sarver, Butler County, Pennsylvania, United States, 16055



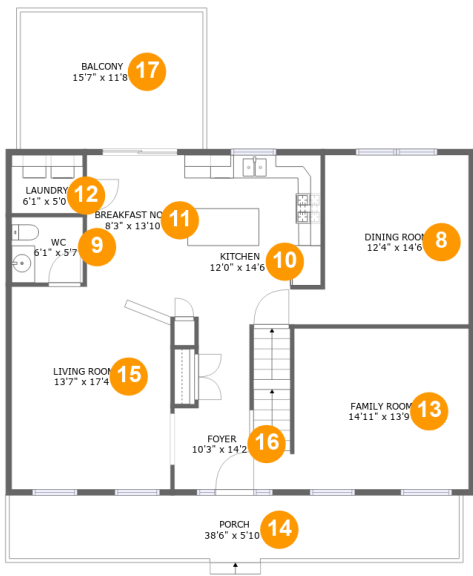
Room dimensions

Floor 1 Total sqft: 2172 Living area: 0

#		Dimensions	sqft	Counted as living area
1	Garage	20'2" x 28'7"	577 sq. ft	No
2	Room	9'4" x 4'3"	40 sq. ft	No
3	Swimming Pool	32'7" x 20'11"	594 sq. ft	No
4	Patio	39'8" x 39'9"	1418 sq. ft	No
5	Covered Patio	15'8" x 10'1"	151 sq. ft	No
6	Room	18'5" x 28'7"	440 sq. ft	No
7	Bath	5'3" x 6'3"	32 sq. ft	No

Home report

129 Stratford Drive, Buffalo Township, Sarver, Butler County,
Pennsylvania, United States, 16055



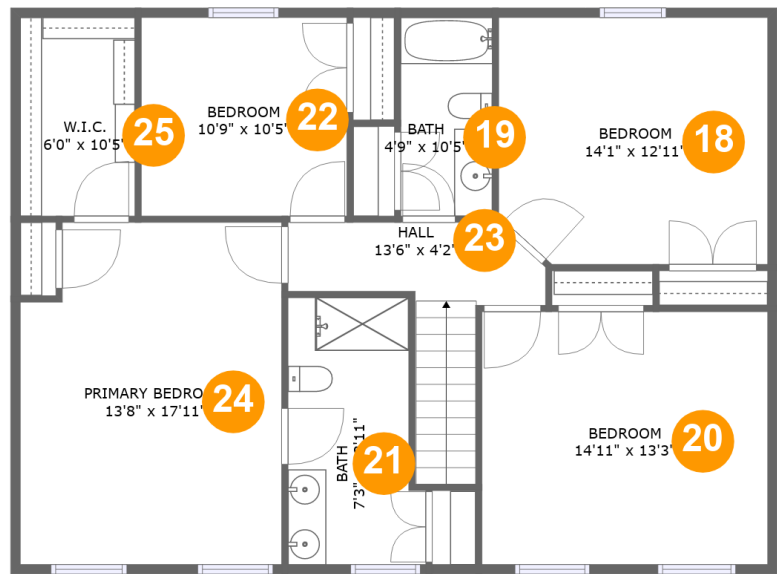
Room dimensions

Floor 2 Total sqft: 1585 Living area: 1187

#		Dimensions	sqft	Counted as living area
8	Dining Room	12'4" x 14'6"	179 sq. ft	Yes
9	WC	6'1" x 5'7"	34 sq. ft	Yes
10	Kitchen	12'0" x 14'6"	169 sq. ft	Yes
11	Breakfast Nook	8'3" x 13'10"	105 sq. ft	Yes
12	Laundry	6'1" x 5'0"	30 sq. ft	Yes
13	Family Room	14'11" x 13'9"	206 sq. ft	Yes
14	Porch	38'6" x 5'10"	215 sq. ft	No
15	Living Room	13'7" x 17'4"	226 sq. ft	Yes
16	Foyer	10'3" x 14'2"	123 sq. ft	Yes
17	Balcony	15'7" x 11'8"	184 sq. ft	No

Home report

129 Stratford Drive, Buffalo Township, Sarver, Butler County,
Pennsylvania, United States, 16055



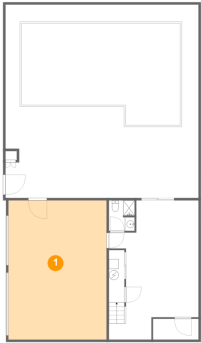
Room dimensions

Floor 3 Total sqft: 1187 Living area: 1187

#		Dimensions	sqft	Counted as living area
18	Bedroom	14'1" x 12'11"	178 sq. ft	Yes
19	Bath	4'9" x 10'5"	50 sq. ft	Yes
20	Bedroom	14'11" x 13'3"	198 sq. ft	Yes
21	Bath	7'3" x 13'11"	92 sq. ft	Yes
22	Bedroom	10'9" x 10'5"	112 sq. ft	Yes
23	Hall	13'6" x 4'2"	80 sq. ft	Yes
24	Primary Bedroom	13'8" x 17'11"	235 sq. ft	Yes
25	W.I.C.	6'0" x 10'5"	62 sq. ft	Yes

129 Stratford Drive, Buffalo Township, Sarver, Butler County,
Pennsylvania, United States, 16055

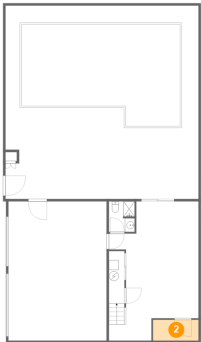
1 Floor 1 - Garage



Dimensions: 20'2" x 28'7"
Area: 577 sq. ft
Counted as living area: No

Heated: No
Finished: No
Enclosed: Yes
Contiguous: Yes
Permitted: Yes
Wet space: No
Addition: No
Conversion: No

2 Floor 1 - Room

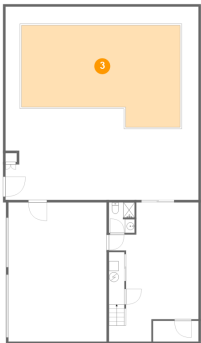


Dimensions: 9'4" x 4'3"
Area: 40 sq. ft
Counted as living area: No

Heated: Yes
Finished: No
Enclosed: Yes
Contiguous: Yes
Permitted: Yes
Wet space: No
Addition: No
Conversion: No

129 Stratford Drive, Buffalo Township, Sarver, Butler County,
Pennsylvania, United States, 16055

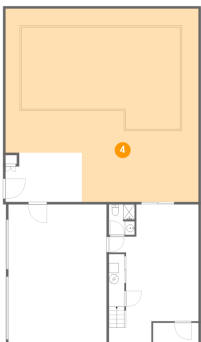
3 Floor 1 - Swimming Pool



Dimensions: 32'7" x 20'11"
Area: 594 sq. ft
Counted as living area: No

Heated: No
Finished: No
Enclosed: No
Contiguous: Yes
Permitted: No
Wet space: No
Addition: No
Conversion: No

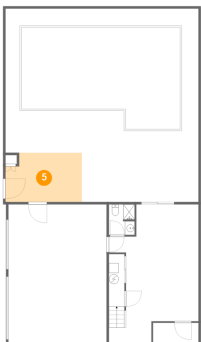
4 Floor 1 - Patio



Dimensions: 39'8" x 39'9"
Area: 1418 sq. ft
Counted as living area: No

Heated: No
Finished: Yes
Enclosed: No
Contiguous: Yes
Permitted: Yes
Wet space: No
Addition: No
Conversion: No

5 Floor 1 - Covered Patio



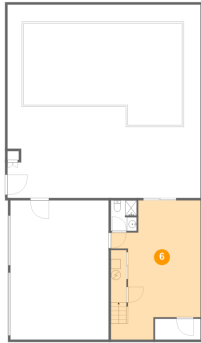
Dimensions: 15'8" x 10'1"
Area: 151 sq. ft
Counted as living area: No

Heated: No
Finished: Yes
Enclosed: No
Contiguous: Yes
Permitted: Yes
Wet space: No
Addition: No
Conversion: No

Home report

129 Stratford Drive, Buffalo Township, Sarver, Butler County,
Pennsylvania, United States, 16055

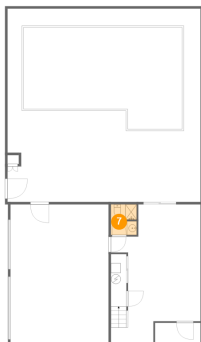
6 Floor 1 - Room



Dimensions: 18'5" x 28'7"
Area: 440 sq. ft
Counted as living area: No

Heated: Yes
Finished: No
Enclosed: Yes
Contiguous: Yes
Permitted: Yes
Wet space: No
Addition: No
Conversion: No

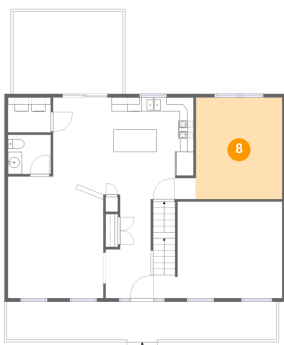
7 Floor 1 - Bath



Dimensions: 5'3" x 6'3"
Area: 32 sq. ft
Counted as living area: No

Heated: Yes
Finished: Yes
Enclosed: Yes
Contiguous: No
Permitted: Yes
Wet space: Yes
Addition: No
Conversion: No

8 Floor 2 - Dining Room



Dimensions: 12'4" x 14'6"
Area: 179 sq. ft
Counted as living area: Yes

Heated: Yes
Finished: Yes
Enclosed: Yes
Contiguous: Yes
Permitted: Yes
Wet space: No
Addition: No
Conversion: No

129 Stratford Drive, Buffalo Township, Sarver, Butler County,
Pennsylvania, United States, 16055

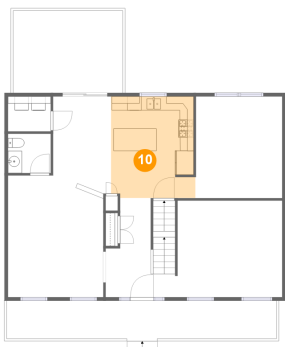
9 Floor 2 - WC



Dimensions: 6'1" x 5'7"
Area: 34 sq. ft
Counted as living area: Yes

Heated: Yes
Finished: Yes
Enclosed: Yes
Contiguous: Yes
Permitted: Yes
Wet space: Yes
Addition: No
Conversion: No

10 Floor 2 - Kitchen



Dimensions: 12'0" x 14'6"
Area: 169 sq. ft
Counted as living area: Yes

Heated: Yes
Finished: Yes
Enclosed: Yes
Contiguous: Yes
Permitted: Yes
Wet space: No
Addition: No
Conversion: No

11 Floor 2 - Breakfast Nook



Dimensions: 8'3" x 13'10"
Area: 105 sq. ft
Counted as living area: Yes

Heated: Yes
Finished: Yes
Enclosed: Yes
Contiguous: Yes
Permitted: Yes
Wet space: No
Addition: No
Conversion: No

Home report

129 Stratford Drive, Buffalo Township, Sarver, Butler County,
Pennsylvania, United States, 16055

12 Floor 2 - Laundry



Dimensions: 6'1" x 5'0"
Area: 30 sq. ft
Counted as living area: Yes

Heated: Yes
Finished: Yes
Enclosed: Yes
Contiguous: Yes
Permitted: Yes
Wet space: No
Addition: No
Conversion: No

13 Floor 2 - Family Room



Dimensions: 14'11" x 13'9"
Area: 206 sq. ft
Counted as living area: Yes

Heated: Yes
Finished: Yes
Enclosed: Yes
Contiguous: Yes
Permitted: Yes
Wet space: No
Addition: No
Conversion: No

14 Floor 2 - Porch



Dimensions: 38'6" x 5'10"
Area: 215 sq. ft
Counted as living area: No

Heated: No
Finished: Yes
Enclosed: No
Contiguous: Yes
Permitted: Yes
Wet space: No
Addition: No
Conversion: No

Home report

129 Stratford Drive, Buffalo Township, Sarver, Butler County,
Pennsylvania, United States, 16055

15 Floor 2 - Living Room



Dimensions: 13'7" x 17'4"
Area: 226 sq. ft
Counted as living area: Yes

Heated: Yes
Finished: Yes
Enclosed: Yes
Contiguous: Yes
Permitted: Yes
Wet space: No
Addition: No
Conversion: No

16 Floor 2 - Foyer



Dimensions: 10'3" x 14'2"
Area: 123 sq. ft
Counted as living area: Yes

Heated: Yes
Finished: Yes
Enclosed: Yes
Contiguous: Yes
Permitted: Yes
Wet space: No
Addition: No
Conversion: No

17 Floor 2 - Balcony



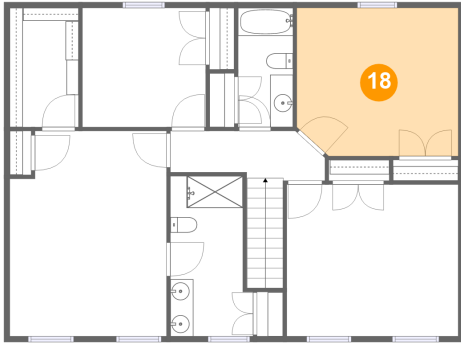
Dimensions: 15'7" x 11'8"
Area: 184 sq. ft
Counted as living area: No

Heated: No
Finished: Yes
Enclosed: No
Contiguous: Yes
Permitted: Yes
Wet space: No
Addition: No
Conversion: No

Home report

129 Stratford Drive, Buffalo Township, Sarver, Butler County,
Pennsylvania, United States, 16055

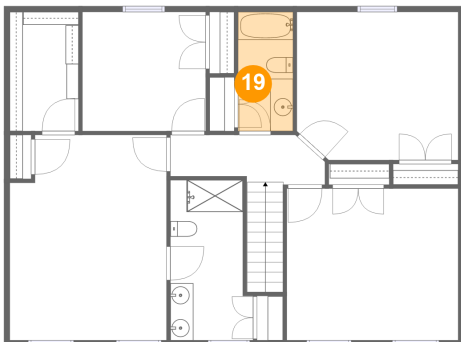
18 Floor 3 - Bedroom



Dimensions: 14'1" x 12'11"
Area: 178 sq. ft
Counted as living area: Yes

Heated: Yes
Finished: Yes
Enclosed: Yes
Contiguous: Yes
Permitted: Yes
Wet space: No
Addition: No
Conversion: No

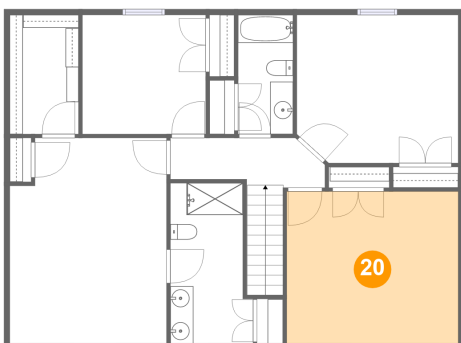
19 Floor 3 - Bath



Dimensions: 4'9" x 10'5"
Area: 50 sq. ft
Counted as living area: Yes

Heated: Yes
Finished: Yes
Enclosed: Yes
Contiguous: Yes
Permitted: Yes
Wet space: Yes
Addition: No
Conversion: No

20 Floor 3 - Bedroom



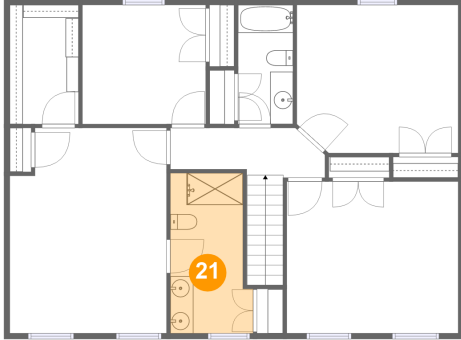
Dimensions: 14'11" x 13'3"
Area: 198 sq. ft
Counted as living area: Yes

Heated: Yes
Finished: Yes
Enclosed: Yes
Contiguous: Yes
Permitted: Yes
Wet space: No
Addition: No
Conversion: No

Home report

129 Stratford Drive, Buffalo Township, Sarver, Butler County,
Pennsylvania, United States, 16055

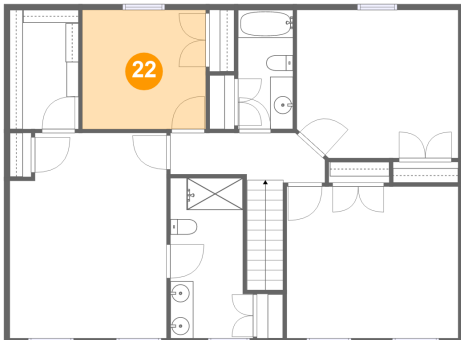
21 Floor 3 - Bath



Dimensions: 7'3" x 13'11"
Area: 92 sq. ft
Counted as living area: Yes

Heated: Yes
Finished: Yes
Enclosed: Yes
Contiguous: Yes
Permitted: Yes
Wet space: Yes
Addition: No
Conversion: No

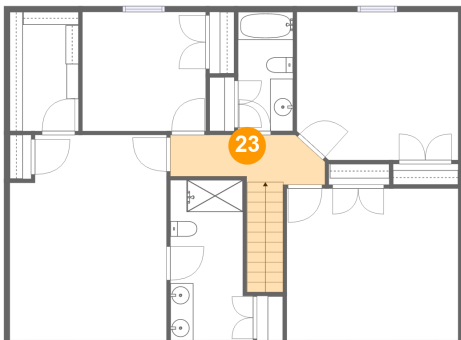
22 Floor 3 - Bedroom



Dimensions: 10'9" x 10'5"
Area: 112 sq. ft
Counted as living area: Yes

Heated: Yes
Finished: Yes
Enclosed: Yes
Contiguous: Yes
Permitted: Yes
Wet space: No
Addition: No
Conversion: No

23 Floor 3 - Hall

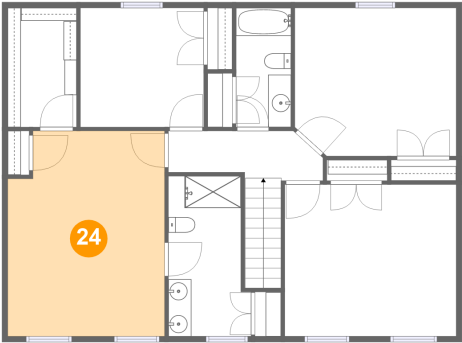


Dimensions: 13'6" x 4'2"
Area: 80 sq. ft
Counted as living area: Yes

Heated: Yes
Finished: Yes
Enclosed: Yes
Contiguous: Yes
Permitted: Yes
Wet space: No
Addition: No
Conversion: No

129 Stratford Drive, Buffalo Township, Sarver, Butler County,
Pennsylvania, United States, 16055

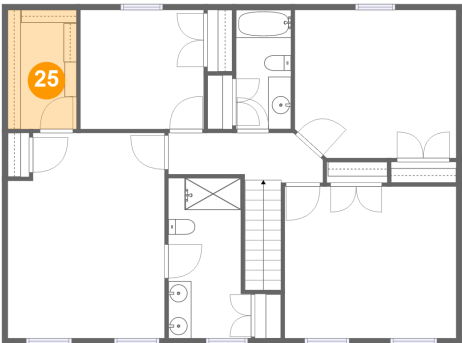
24 Floor 3 - Primary Bedroom



Dimensions: 13'8" x 17'11"
Area: 235 sq. ft
Counted as living area: Yes

Heated: Yes
Finished: Yes
Enclosed: Yes
Contiguous: Yes
Permitted: Yes
Wet space: No
Addition: No
Conversion: No

25 Floor 3 - W.I.C.



Dimensions: 6'0" x 10'5"
Area: 62 sq. ft
Counted as living area: Yes

Heated: Yes
Finished: Yes
Enclosed: Yes
Contiguous: Yes
Permitted: Yes
Wet space: No
Addition: No
Conversion: No