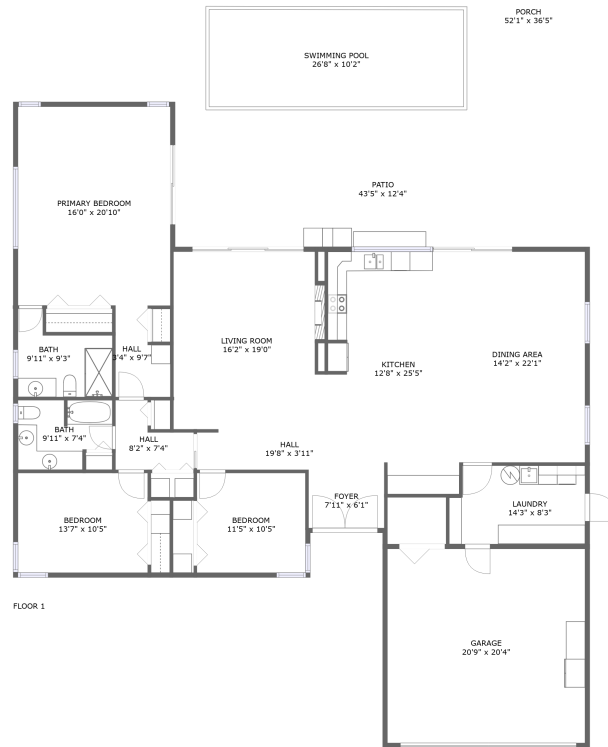


10236 Monarch Drive, Imperial Point, Largo, Pinellas County, Florida, United States, 33774



Property Summary



1 floors



3 bedrooms



2 bathrooms



4,287 total sqft

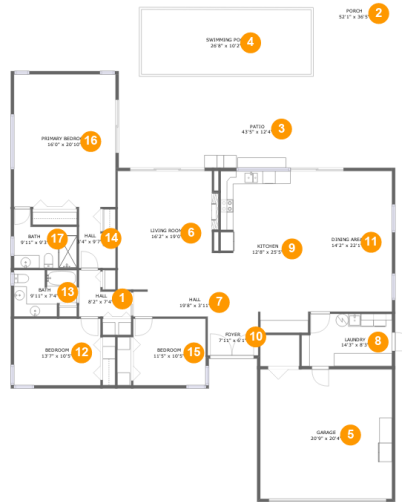


1 garages



2,218 Gross Living Area sqft

10236 Monarch Drive, Imperial Point, Largo, Pinellas County, Florida, United States, 33774



Room Dimensions

Floor 1

Total sqft: 4287

Living area: 2218

#	Room name	Dimensions	Area (sqft)	Counted as Living Area
1	Hall	8'2" x 7'4"	44 sq. ft	Yes
2	Porch	52'1" x 36'5"	1315 sq. ft	Yes
3	Patio	43'5" x 12'4"	539 sq. ft	No
4	Swimming Pool	26'8" x 10'2"	272 sq. ft	No
5	Garage	20'9" x 20'4"	422 sq. ft	No
6	Living Room	16'2" x 19'0"	294 sq. ft	Yes
7	Hall	19'8" x 3'11"	77 sq. ft	Yes
8	Laundry	14'3" x 8'3"	112 sq. ft	Yes
9	Kitchen	12'8" x 25'5"	286 sq. ft	Yes
10	Foyer	7'11" x 6'1"	48 sq. ft	Yes
11	Dining Area	14'2" x 22'1"	315 sq. ft	Yes

Scan captured on Thu, 23 May 2024 22:51:10 GMT

Information is calculated by CubiCasa technology; deemed highly reliable but not guaranteed.

**10236 Monarch Drive, Imperial Point, Largo,
Pinellas County, Florida, United States, 33774**

#	Room name	Dimensions	Area (sqft)	Counted as Living Area
12	Bedroom	13'7" x 10'5"	142 sq. ft	Yes
13	Bath	9'11" x 7'4"	65 sq. ft	Yes
14	Hall	3'4" x 9'7"	32 sq. ft	Yes
15	Bedroom	11'5" x 10'5"	119 sq. ft	Yes
16	Primary Bedroom	16'0" x 20'10"	333 sq. ft	Yes
17	Bath	9'11" x 9'3"	71 sq. ft	Yes

10236 Monarch Drive, Imperial Point, Largo, Pinellas County, Florida, United States, 33774

1 Floor 1 - Hall



Dimensions: 8'2" x 7'4"
Area: 44 sq. ft
Counted as Living Area:
Yes

Heated: Yes
Finished: Yes
Enclosed: Yes
Contiguous:
Yes
Permitted: Yes
Wet Space: No
Addition: No
Conversion: No

2 Floor 1 - Porch

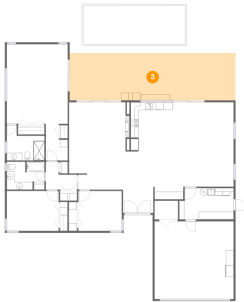


Dimensions: 52'1" x 36'5"
Area: 1315 sq. ft
Counted as Living Area:
Yes

Heated: No
Finished: Yes
Enclosed: No
Contiguous:
Yes
Permitted: Yes
Wet Space: No
Addition: No
Conversion: No

10236 Monarch Drive, Imperial Point, Largo, Pinellas County, Florida, United States, 33774

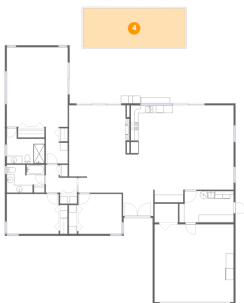
3 Floor 1 - Patio



Dimensions: 43'5" x 12'4"
Area: 539 sq. ft
Counted as Living Area: No

Heated: No
Finished: Yes
Enclosed: No
Contiguous: Yes
Permitted: Yes
Wet Space: No
Addition: No
Conversion: No

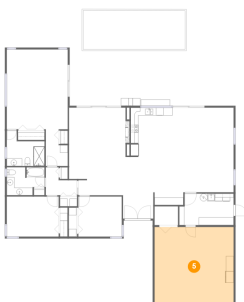
4 Floor 1 - Swimming Pool



Dimensions: 26'8" x 10'2"
Area: 272 sq. ft
Counted as Living Area: No

Heated: No
Finished: No
Enclosed: No
Contiguous: Yes
Permitted: No
Wet Space: No
Addition: No
Conversion: No

5 Floor 1 - Garage

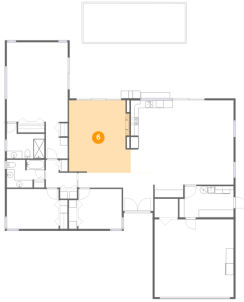


Dimensions: 20'9" x 20'4"
Area: 422 sq. ft
Counted as Living Area: No

Heated: No
Finished: No
Enclosed: Yes
Contiguous: Yes
Permitted: Yes
Wet Space: No
Addition: No
Conversion: No

10236 Monarch Drive, Imperial Point, Largo, Pinellas County, Florida, United States, 33774

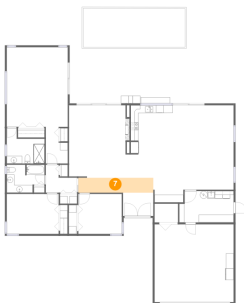
6 Floor 1 - Living Room



Dimensions: 16'2" x 19'0"
Area: 294 sq. ft
Counted as Living Area:
Yes

Heated: Yes
Finished: Yes
Enclosed: Yes
Contiguous:
Yes
Permitted: Yes
Wet Space: No
Addition: No
Conversion: No

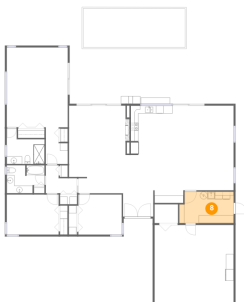
7 Floor 1 - Hall



Dimensions: 19'8" x 3'11"
Area: 77 sq. ft
Counted as Living Area:
Yes

Heated: Yes
Finished: Yes
Enclosed: Yes
Contiguous:
Yes
Permitted: Yes
Wet Space: No
Addition: No
Conversion: No

8 Floor 1 - Laundry

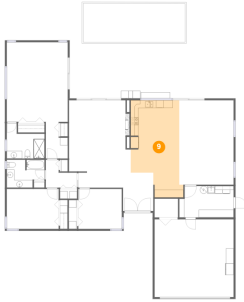


Dimensions: 14'3" x 8'3"
Area: 112 sq. ft
Counted as Living Area:
Yes

Heated: Yes
Finished: Yes
Enclosed: Yes
Contiguous:
Yes
Permitted: Yes
Wet Space: No
Addition: No
Conversion: No

10236 Monarch Drive, Imperial Point, Largo, Pinellas County, Florida, United States, 33774

9 Floor 1 - Kitchen



Dimensions: 12'8" x 25'5"
Area: 286 sq. ft
Counted as Living Area:
Yes

Heated: Yes
Finished: Yes
Enclosed: Yes
Contiguous:
Yes
Permitted: Yes
Wet Space: No
Addition: No
Conversion: No

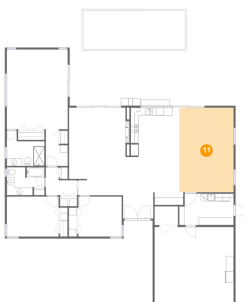
10 Floor 1 - Foyer



Dimensions: 7'11" x 6'1"
Area: 48 sq. ft
Counted as Living Area:
Yes

Heated: Yes
Finished: Yes
Enclosed: Yes
Contiguous:
Yes
Permitted: Yes
Wet Space: No
Addition: No
Conversion: No

11 Floor 1 - Dining Area

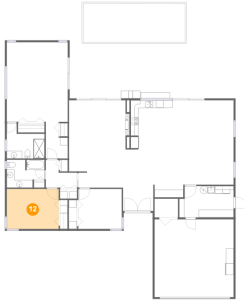


Dimensions: 14'2" x 22'1"
Area: 315 sq. ft
Counted as Living Area:
Yes

Heated: Yes
Finished: Yes
Enclosed: Yes
Contiguous:
Yes
Permitted: Yes
Wet Space: No
Addition: No
Conversion: No

10236 Monarch Drive, Imperial Point, Largo, Pinellas County, Florida, United States, 33774

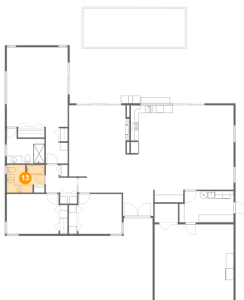
12 Floor 1 - Bedroom



Dimensions: 13'7" x 10'5"
Area: 142 sq. ft
Counted as Living Area:
Yes

Heated: Yes
Finished: Yes
Enclosed: Yes
Contiguous:
Yes
Permitted: Yes
Wet Space: No
Addition: No
Conversion: No

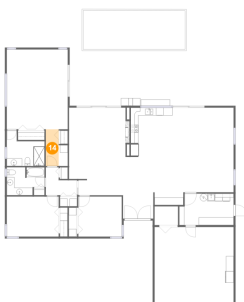
13 Floor 1 - Bath



Dimensions: 9'11" x 7'4"
Area: 65 sq. ft
Counted as Living Area:
Yes

Heated: Yes
Finished: Yes
Enclosed: Yes
Contiguous:
Yes
Permitted: Yes
Wet Space: Yes
Addition: No
Conversion: No

14 Floor 1 - Hall

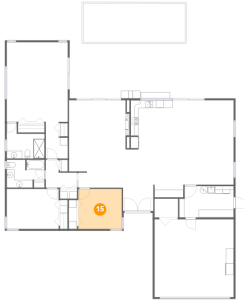


Dimensions: 3'4" x 9'7"
Area: 32 sq. ft
Counted as Living Area:
Yes

Heated: Yes
Finished: Yes
Enclosed: Yes
Contiguous:
Yes
Permitted: Yes
Wet Space: No
Addition: No
Conversion: No

10236 Monarch Drive, Imperial Point, Largo, Pinellas County, Florida, United States, 33774

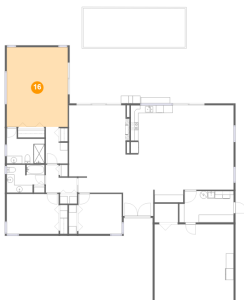
15 Floor 1 - Bedroom



Dimensions: 11'5" x 10'5"
Area: 119 sq. ft
Counted as Living Area:
Yes

Heated: Yes
Finished: Yes
Enclosed: Yes
Contiguous:
Yes
Permitted: Yes
Wet Space: No
Addition: No
Conversion: No

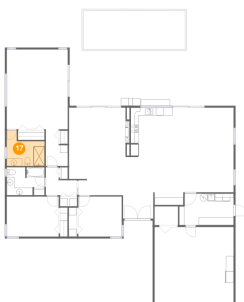
16 Floor 1 - Primary Bedroom



Dimensions: 16'0" x 20'10"
Area: 333 sq. ft
Counted as Living Area:
Yes

Heated: Yes
Finished: Yes
Enclosed: Yes
Contiguous:
Yes
Permitted: Yes
Wet Space: No
Addition: No
Conversion: No

17 Floor 1 - Bath



Dimensions: 9'11" x 9'3"
Area: 71 sq. ft
Counted as Living Area:
Yes

Heated: Yes
Finished: Yes
Enclosed: Yes
Contiguous:
Yes
Permitted: Yes
Wet Space: Yes
Addition: No
Conversion: No