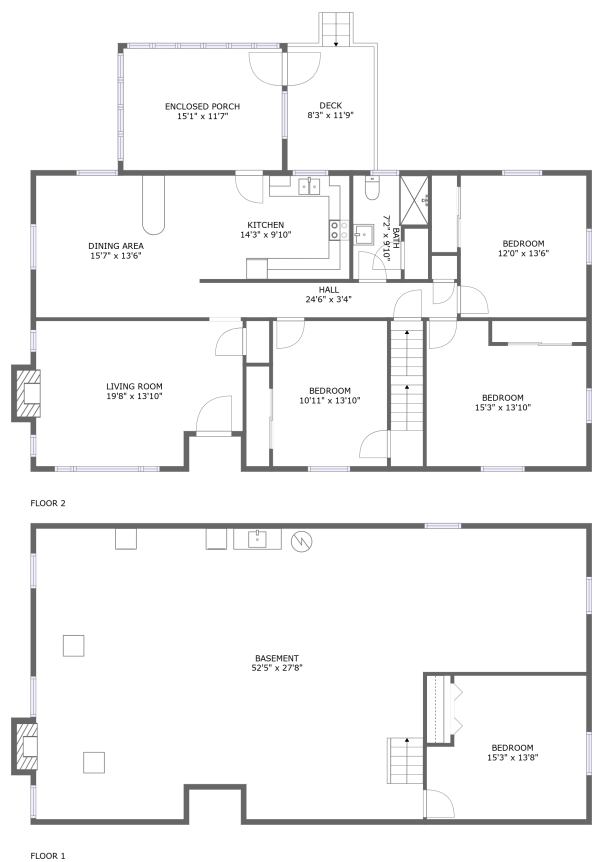




Home report


2745 Old Quarry Road, Bassett, Henry County, Virginia, United States, 24055





Property summary


 **0** Garages


 **4** Bedrooms

 **1** Bathrooms

 **0** Half baths

 **2** Floors

 **1,515** Gross living area sqft

 **3,343** Total sqft

2745 Old Quarry Road, Bassett, Henry County, Virginia, United States, 24055



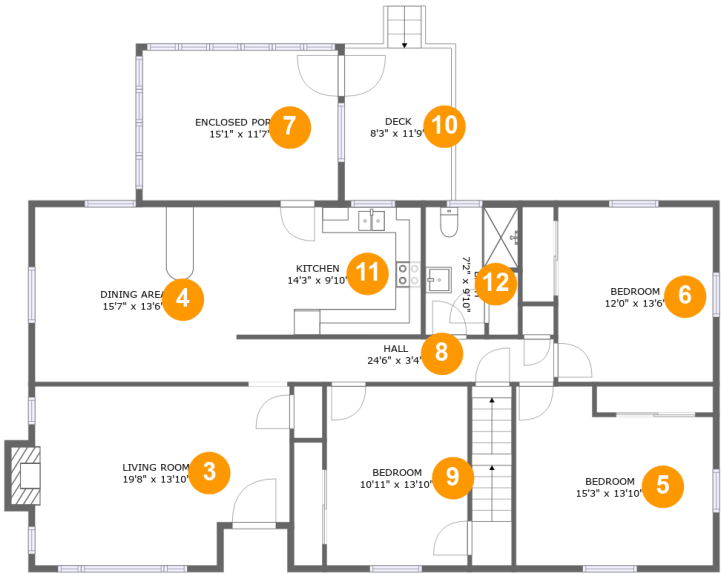
Room dimensions

Floor 1 Total sqft: 1526 Living area: 0

#		Max Dimensions	sqft	Included
1	Basement	52'5" x 27'8"	1221 sq. ft	No
2	Bedroom	15'3" x 13'8"	191 sq. ft	No

Home report

2745 Old Quarry Road, Bassett, Henry County, Virginia, United States, 24055



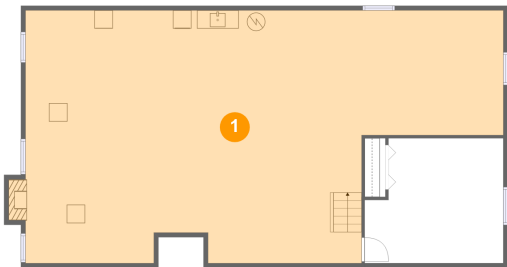
Room dimensions

Floor 2 Total sqft: 1817 Living area: 1515

#		Max Dimensions	sqft	Included
3	Living Room	19'8" x 13'10"	262 sq. ft	Yes
4	Dining Area	15'7" x 13'6"	211 sq. ft	Yes
5	Bedroom	15'3" x 13'10"	189 sq. ft	Yes
6	Bedroom	12'0" x 13'6"	162 sq. ft	Yes
7	Enclosed Porch	15'1" x 11'7"	176 sq. ft	No
8	Hall	24'6" x 3'4"	81 sq. ft	Yes
9	Bedroom	10'11" x 13'10"	151 sq. ft	Yes
10	Deck	8'3" x 11'9"	97 sq. ft	No
11	Kitchen	14'3" x 9'10"	141 sq. ft	Yes
12	Bath	7'2" x 9'10"	57 sq. ft	Yes

2745 Old Quarry Road, Bassett, Henry County, Virginia, United States, 24055

1 Floor 1 - Basement



Max Dimensions: 52'5" x 27'8"
Calculated Area: 1221 sq. ft
Included: No

Heated: Yes
Finished: No
Enclosed: Yes
Contiguous: Yes
Permitted: Yes
Wet space: No
Addition: No
Conversion: No

2 Floor 1 - Bedroom



Max Dimensions: 15'3" x 13'8"
Calculated Area: 191 sq. ft
Included: No

Heated: Yes
Finished: Yes
Enclosed: Yes
Contiguous: No
Permitted: Yes
Wet space: No
Addition: No
Conversion: No

Home report

2745 Old Quarry Road, Bassett, Henry County, Virginia, United States, 24055

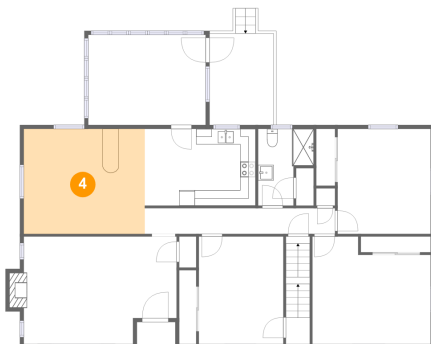
3 Floor 2 - Living Room



Max Dimensions: 19'8" x 13'10"
Calculated Area: 262 sq. ft
Included: Yes

Heated: Yes
Finished: Yes
Enclosed: Yes
Contiguous: Yes
Permitted: Yes
Wet space: No
Addition: No
Conversion: No

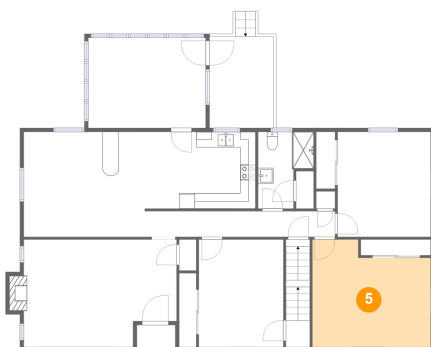
4 Floor 2 - Dining Area



Max Dimensions: 15'7" x 13'6"
Calculated Area: 211 sq. ft
Included: Yes

Heated: Yes
Finished: Yes
Enclosed: Yes
Contiguous: Yes
Permitted: Yes
Wet space: No
Addition: No
Conversion: No

5 Floor 2 - Bedroom



Max Dimensions: 15'3" x 13'10"
Calculated Area: 189 sq. ft
Included: Yes

Heated: Yes
Finished: Yes
Enclosed: Yes
Contiguous: Yes
Permitted: Yes
Wet space: No
Addition: No
Conversion: No

Home report

2745 Old Quarry Road, Bassett, Henry County, Virginia, United States, 24055

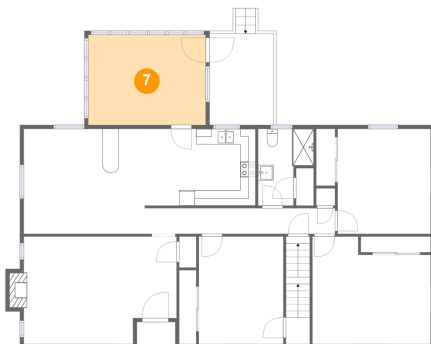
6 Floor 2 - Bedroom



Max Dimensions: 12'0" x 13'6"
Calculated Area: 162 sq. ft
Included: Yes

Heated: Yes
Finished: Yes
Enclosed: Yes
Contiguous: Yes
Permitted: Yes
Wet space: No
Addition: No
Conversion: No

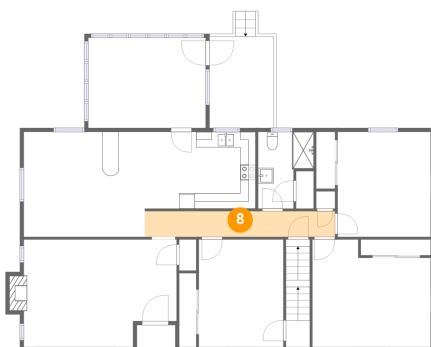
7 Floor 2 - Enclosed Porch



Max Dimensions: 15'1" x 11'7"
Calculated Area: 176 sq. ft
Included: No

Heated: No
Finished: Yes
Enclosed: No
Contiguous: Yes
Permitted: Yes
Wet space: No
Addition: No
Conversion: No

8 Floor 2 - Hall



Max Dimensions: 24'6" x 3'4"
Calculated Area: 81 sq. ft
Included: Yes

Heated: Yes
Finished: Yes
Enclosed: Yes
Contiguous: Yes
Permitted: Yes
Wet space: No
Addition: No
Conversion: No

Home report

2745 Old Quarry Road, Bassett, Henry County, Virginia, United States, 24055

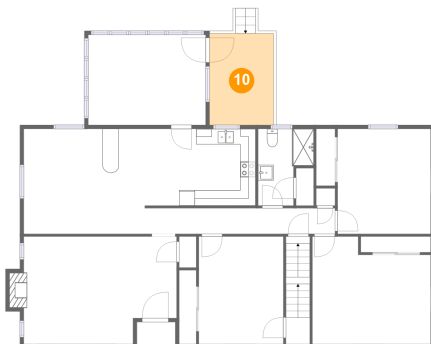
9 Floor 2 - Bedroom



Max Dimensions: 10'11" x 13'10"
Calculated Area: 151 sq. ft
Included: Yes

Heated: Yes
Finished: Yes
Enclosed: Yes
Contiguous: Yes
Permitted: Yes
Wet space: No
Addition: No
Conversion: No

10 Floor 2 - Deck



Max Dimensions: 8'3" x 11'9"
Calculated Area: 97 sq. ft
Included: No

Heated: No
Finished: Yes
Enclosed: No
Contiguous: Yes
Permitted: Yes
Wet space: No
Addition: No
Conversion: No

11 Floor 2 - Kitchen



Max Dimensions: 14'3" x 9'10"
Calculated Area: 141 sq. ft
Included: Yes

Heated: Yes
Finished: Yes
Enclosed: Yes
Contiguous: Yes
Permitted: Yes
Wet space: No
Addition: No
Conversion: No

2745 Old Quarry Road, Bassett, Henry County, Virginia, United States, 24055

12 Floor 2 - Bath



Max Dimensions: 7'2" x 9'10"
Calculated Area: 57 sq. ft
Included: Yes

Heated: Yes
Finished: Yes
Enclosed: Yes
Contiguous: Yes
Permitted: Yes
Wet space: Yes
Addition: No
Conversion: No