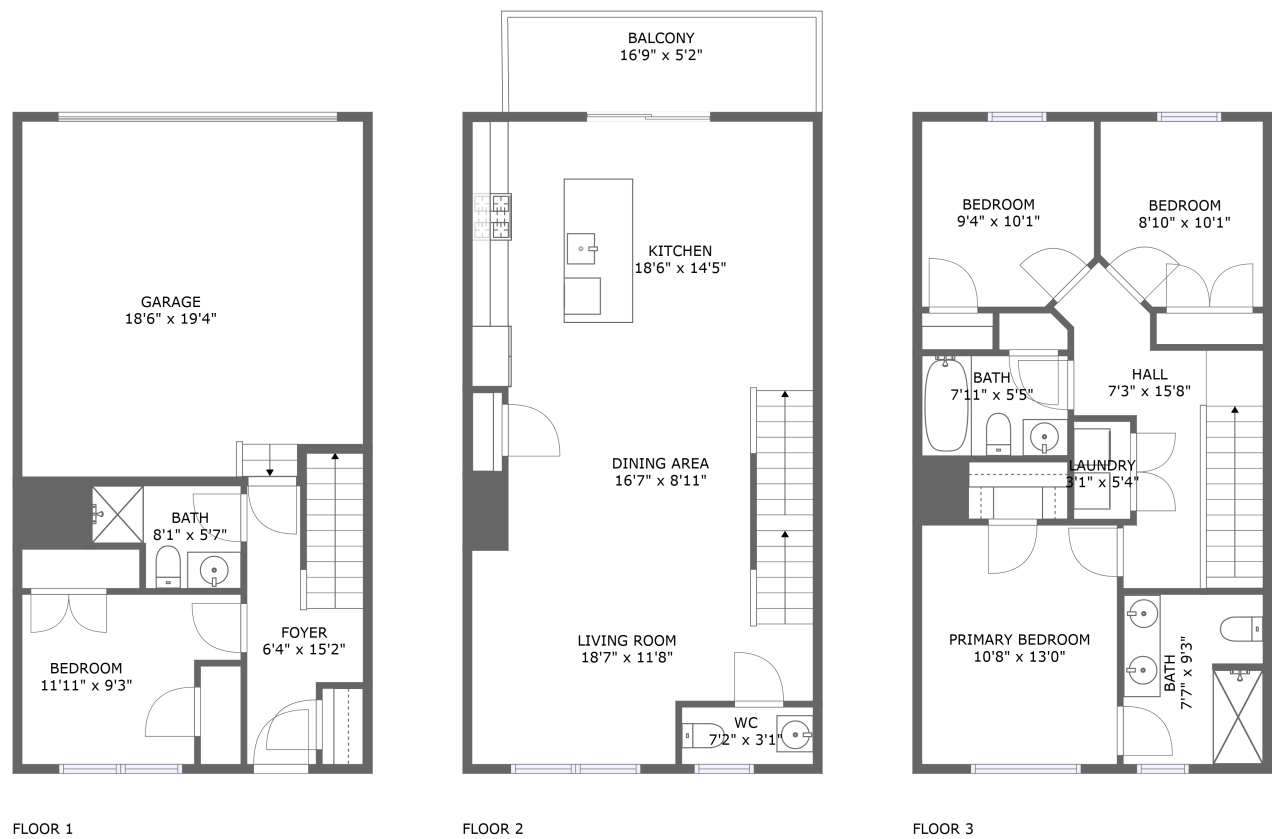


Home report

8602 Walter Martz Road, Frederick, Frederick County, Maryland,
United States, 21702



Total Area: 1588 sq. ft

Floor 1: 287 sq. ft, Floor 2: 650 sq. ft, Floor 3: 651 sq. ft

Excluded: Garage 353 sq. ft, Balcony 87 sq. ft, Walls: 120 sq. ft

Property summary

 **3** Floors

 **4** Bedrooms

 **3** Bathrooms

Home report

**8602 Walter Martz Road, Frederick, Frederick County, Maryland,
United States, 21702**



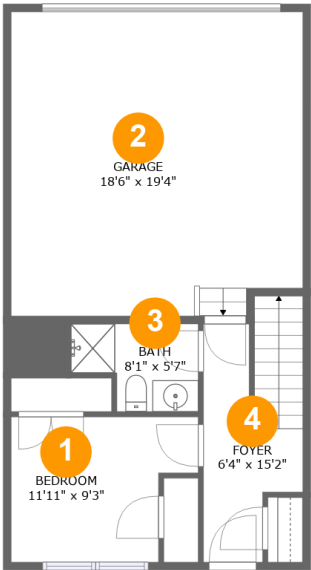
1
Half baths



1
Garages

Home report

8602 Walter Martz Road, Frederick, Frederick County, Maryland,
United States, 21702



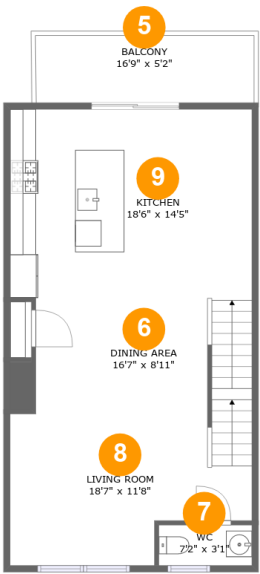
Room dimensions

Floor 1 Total:287sqft Excluded: 353sqft

#		Max Dimensions	sqft	Included
1	Bedroom	11'11" x 9'3"	96 sq. ft	Yes
2	Garage	18'6" x 19'4"	353 sq. ft	No
3	Bath	8'1" x 5'7"	38 sq. ft	Yes
4	Foyer	6'4" x 15'2"	88 sq. ft	Yes

Home report

8602 Walter Martz Road, Frederick, Frederick County, Maryland,
United States, 21702



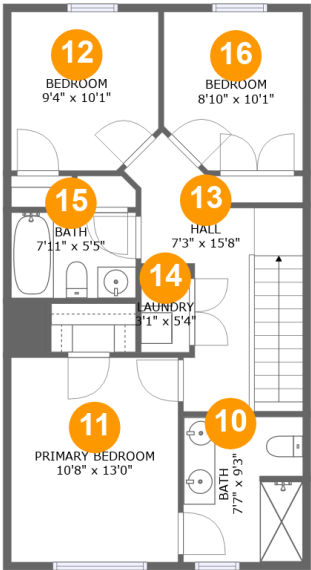
Room dimensions

Floor 2 Total:650sqft Excluded: 87sqft

#		Max Dimensions	sqft	Included
5	Balcony	16'9" x 5'2"	87 sq. ft	No
6	Dining Area	16'7" x 8'11"	148 sq. ft	Yes
7	WC	7'2" x 3'1"	22 sq. ft	Yes
8	Living Room	18'7" x 11'8"	190 sq. ft	Yes
9	Kitchen	18'6" x 14'5"	268 sq. ft	Yes

Home report

8602 Walter Martz Road, Frederick, Frederick County, Maryland,
United States, 21702

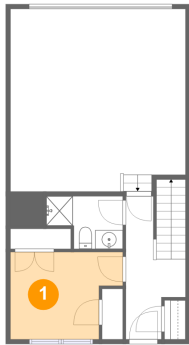


Room dimensions

Floor 3 Total:651sqft Excluded: 0sqft

#		Max Dimensions	sqft	Included
10	Bath	7'7" x 9'3"	69 sq. ft	Yes
11	Primary Bedroom	10'8" x 13'0"	138 sq. ft	Yes
12	Bedroom	9'4" x 10'1"	91 sq. ft	Yes
13	Hall	7'3" x 15'8"	120 sq. ft	Yes
14	Laundry	3'1" x 5'4"	16 sq. ft	Yes
15	Bath	7'11" x 5'5"	43 sq. ft	Yes
16	Bedroom	8'10" x 10'1"	85 sq. ft	Yes

1 Floor 1 - Bedroom



Max Dimensions: 11'11" x 9'3"
Calculated Area: 96 sq. ft
Included: Yes

Heated: Yes
Finished: Yes
Enclosed: Yes
Contiguous: Yes
Permitted: Yes
Wet space: No
Addition: No
Conversion: No

2 Floor 1 - Garage



Max Dimensions: 18'6" x 19'4"
Calculated Area: 353 sq. ft
Included: No

Heated: No
Finished: No
Enclosed: Yes
Contiguous: Yes
Permitted: Yes
Wet space: No
Addition: No
Conversion: No

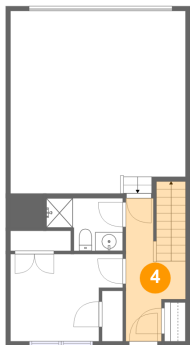
3 Floor 1 - Bath



Max Dimensions: 8'1" x 5'7"
Calculated Area: 38 sq. ft
Included: Yes

Heated: Yes
Finished: Yes
Enclosed: Yes
Contiguous: Yes
Permitted: Yes
Wet space: Yes
Addition: No
Conversion: No

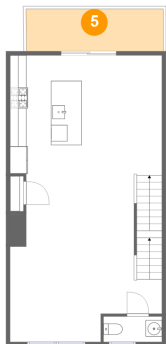
4 Floor 1 - Foyer



Max Dimensions: 6'4" x 15'2"
Calculated Area: 88 sq. ft
Included: Yes

Heated: Yes
Finished: Yes
Enclosed: Yes
Contiguous: Yes
Permitted: Yes
Wet space: No
Addition: No
Conversion: No

5 Floor 2 - Balcony



Max Dimensions: 16'9" x 5'2"
Calculated Area: 87 sq. ft
Included: No

Heated: No
Finished: Yes
Enclosed: No
Contiguous: Yes
Permitted: Yes
Wet space: No
Addition: No
Conversion: No

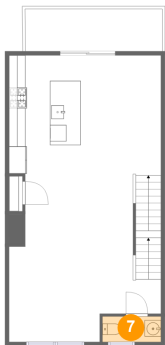
6 Floor 2 - Dining Area



Max Dimensions: 16'7" x 8'11"
Calculated Area: 148 sq. ft
Included: Yes

Heated: Yes
Finished: Yes
Enclosed: Yes
Contiguous: Yes
Permitted: Yes
Wet space: No
Addition: No
Conversion: No

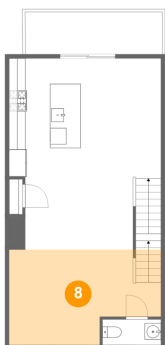
7 Floor 2 - WC



Max Dimensions: 7'2" x 3'1"
Calculated Area: 22 sq. ft
Included: Yes

Heated: Yes
Finished: Yes
Enclosed: Yes
Contiguous: Yes
Permitted: Yes
Wet space: Yes
Addition: No
Conversion: No

8 Floor 2 - Living Room



Max Dimensions: 18'7" x 11'8"
Calculated Area: 190 sq. ft
Included: Yes

Heated: Yes
Finished: Yes
Enclosed: Yes
Contiguous: Yes
Permitted: Yes
Wet space: No
Addition: No
Conversion: No

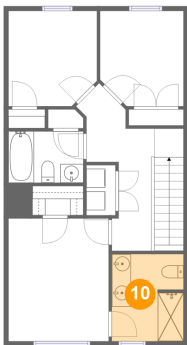
9 Floor 2 - Kitchen



Max Dimensions: 18'6" x 14'5"
Calculated Area: 268 sq. ft
Included: Yes

Heated: Yes
Finished: Yes
Enclosed: Yes
Contiguous: Yes
Permitted: Yes
Wet space: No
Addition: No
Conversion: No

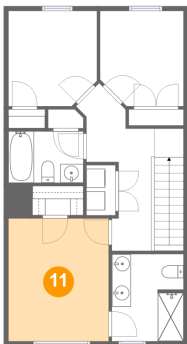
10 Floor 3 - Bath



Max Dimensions: 7'7" x 9'3"
Calculated Area: 69 sq. ft
Included: Yes

Heated: Yes
Finished: Yes
Enclosed: Yes
Contiguous: Yes
Permitted: Yes
Wet space: Yes
Addition: No
Conversion: No

11 Floor 3 - Primary Bedroom



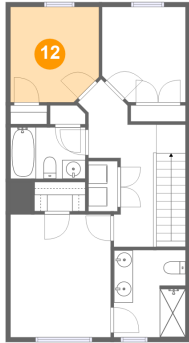
Max Dimensions: 10'8" x 13'0"
Calculated Area: 138 sq. ft
Included: Yes

Heated: Yes
Finished: Yes
Enclosed: Yes
Contiguous: Yes
Permitted: Yes
Wet space: No
Addition: No
Conversion: No

Home report

8602 Walter Martz Road, Frederick, Frederick County, Maryland,
United States, 21702

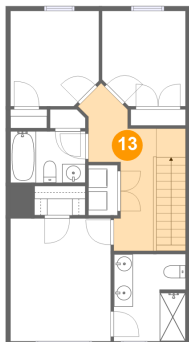
12 Floor 3 - Bedroom



Max Dimensions: 9'4" x 10'1"
Calculated Area: 91 sq. ft
Included: Yes

Heated: Yes
Finished: Yes
Enclosed: Yes
Contiguous: Yes
Permitted: Yes
Wet space: No
Addition: No
Conversion: No

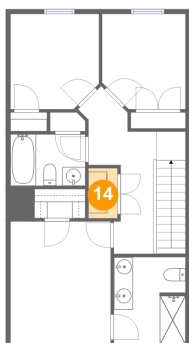
13 Floor 3 - Hall



Max Dimensions: 7'3" x 15'8"
Calculated Area: 120 sq. ft
Included: Yes

Heated: Yes
Finished: Yes
Enclosed: Yes
Contiguous: Yes
Permitted: Yes
Wet space: No
Addition: No
Conversion: No

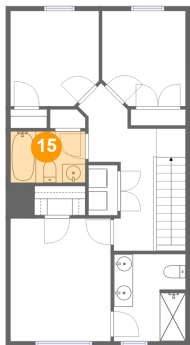
14 Floor 3 - Laundry



Max Dimensions: 3'1" x 5'4"
Calculated Area: 16 sq. ft
Included: Yes

Heated: Yes
Finished: Yes
Enclosed: Yes
Contiguous: Yes
Permitted: Yes
Wet space: No
Addition: No
Conversion: No

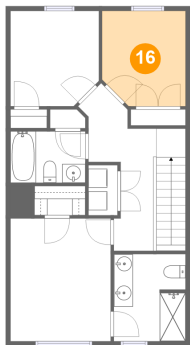
15 Floor 3 - Bath



Max Dimensions: 7'11" x 5'5"
Calculated Area: 43 sq. ft
Included: Yes

Heated: Yes
Finished: Yes
Enclosed: Yes
Contiguous: Yes
Permitted: Yes
Wet space: Yes
Addition: No
Conversion: No

16 Floor 3 - Bedroom



Max Dimensions: 8'10" x 10'1"
Calculated Area: 85 sq. ft
Included: Yes

Heated: Yes
Finished: Yes
Enclosed: Yes
Contiguous: Yes
Permitted: Yes
Wet space: No
Addition: No
Conversion: No