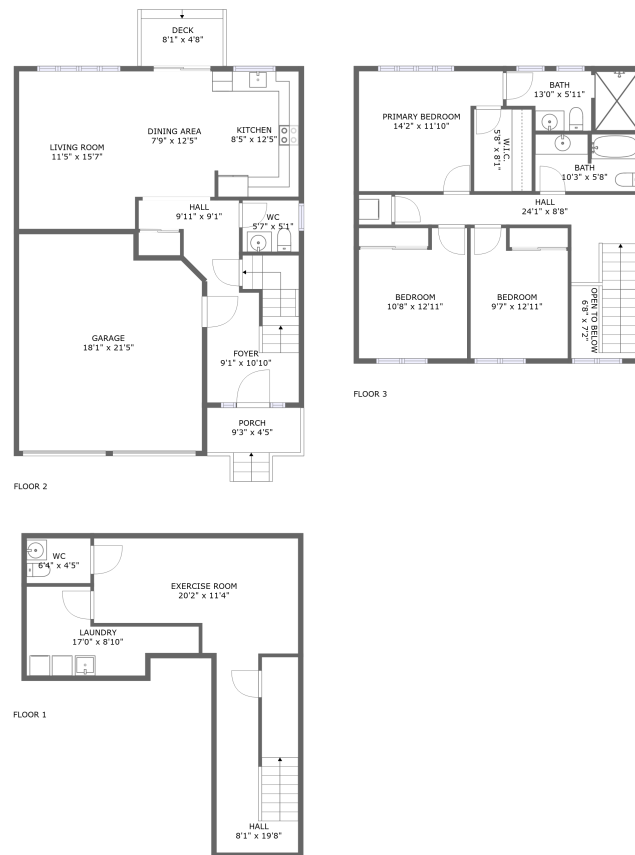




19 Don Hadden Crescent, Sunderland, Regional Municipality of Durham, Ontario, Canada, L0C 1H0

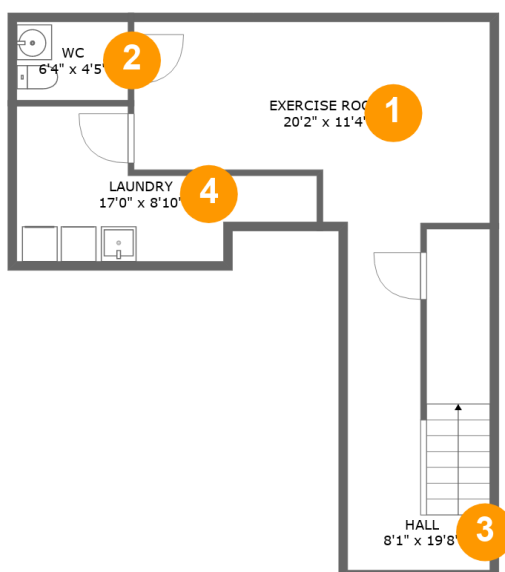


Property summary

 **1** Garages
  **3** Bedrooms
  **2** Bathrooms
  **2** Half baths

 **3** Floors
  **1,923** Gross living area sqft
  **2,527** Total sqft

19 Don Hadden Crescent, Sunderland, Regional Municipality of Durham, Ontario, Canada, L0C 1H0



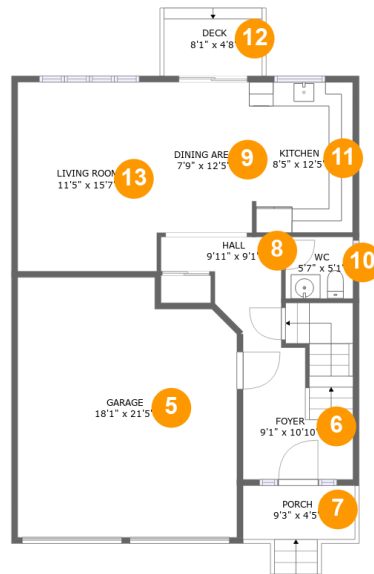
Room dimensions

Floor 1

Total sqft: 550 Living area: 440

#		Dimensions	sqft	Counted as living area
1	Exercise Room	20'2" x 11'4"	198 sq. ft	Yes
2	WC	6'4" x 4'5"	28 sq. ft	Yes
3	Hall	8'1" x 19'8"	154 sq. ft	Yes
4	Laundry	17'0" x 8'10"	96 sq. ft	No

19 Don Hadden Crescent, Sunderland, Regional Municipality of Durham, Ontario, Canada, L0C 1H0



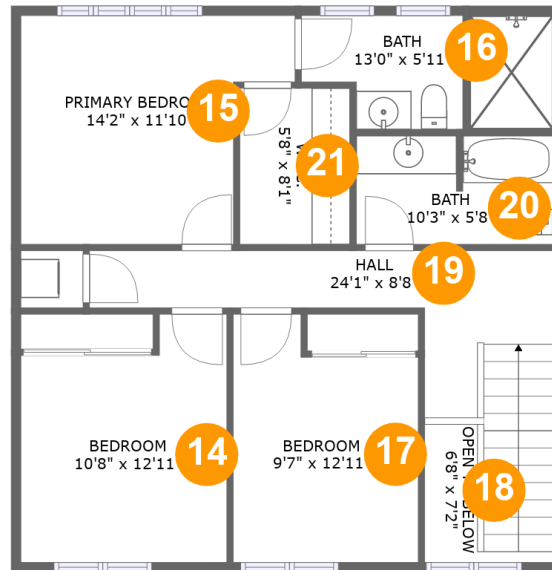
Room dimensions

Floor 2

Total sqft: 1136 Living area: 667

#		Dimensions	sqft	Counted as living area
5	Garage	18'1" x 21'5"	367 sq. ft	No
6	Foyer	9'1" x 10'10"	117 sq. ft	Yes
7	Porch	9'3" x 4'5"	41 sq. ft	No
8	Hall	9'11" x 9'1"	57 sq. ft	Yes
9	Dining Area	7'9" x 12'5"	97 sq. ft	Yes
10	WC	5'7" x 5'1"	28 sq. ft	Yes
11	Kitchen	8'5" x 12'5"	103 sq. ft	Yes
12	Deck	8'1" x 4'8"	38 sq. ft	No
13	Living Room	11'5" x 15'7"	179 sq. ft	Yes

19 Don Hadden Crescent, Sunderland, Regional Municipality of Durham, Ontario, Canada, L0C 1H0



Room dimensions

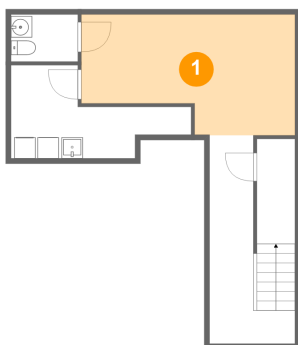
Floor 3

Total sqft: 841 Living area: 816

#		Dimensions	sqft	Counted as living area
14	Bedroom	10'8" x 12'11"	122 sq. ft	Yes
15	Primary Bedroom	14'2" x 11'10"	142 sq. ft	Yes
16	Bath	13'0" x 5'11"	69 sq. ft	Yes
17	Bedroom	9'7" x 12'11"	110 sq. ft	Yes
18	Open To Below	6'8" x 7'2"	22 sq. ft	No
19	Hall	24'1" x 8'8"	138 sq. ft	Yes
20	Bath	10'3" x 5'8"	57 sq. ft	Yes
21	W.I.C.	5'8" x 8'1"	46 sq. ft	Yes

19 Don Hadden Crescent, Sunderland, Regional Municipality of Durham, Ontario, Canada, L0C 1H0

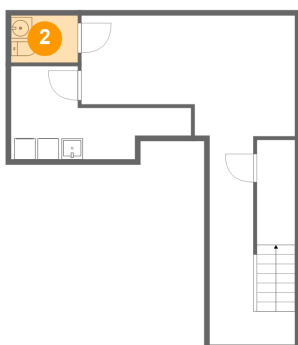
1 Floor 1 - Exercise Room



Dimensions: 20'2" x 11'4"
Area: 198 sq. ft
Counted as living area: Yes

Heated: Yes
Finished: Yes
Enclosed: Yes
Contiguous: Yes
Permitted: Yes
Wet space: No
Addition: No
Conversion: No

2 Floor 1 - WC

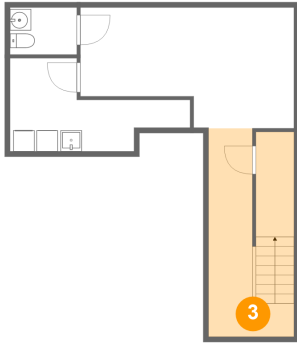


Dimensions: 6'4" x 4'5"
Area: 28 sq. ft
Counted as living area: Yes

Heated: Yes
Finished: Yes
Enclosed: Yes
Contiguous: Yes
Permitted: Yes
Wet space: Yes
Addition: No
Conversion: No

19 Don Hadden Crescent, Sunderland, Regional Municipality of Durham, Ontario, Canada, L0C 1H0

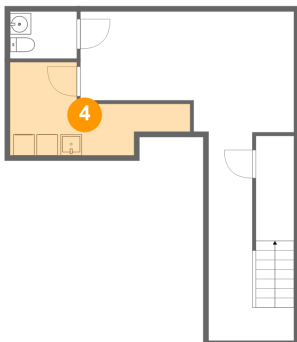
3 Floor 1 - Hall



Dimensions: 8'1" x 19'8"
Area: 154 sq. ft
Counted as living area: Yes

Heated: Yes
Finished: Yes
Enclosed: Yes
Contiguous: Yes
Permitted: Yes
Wet space: No
Addition: No
Conversion: No

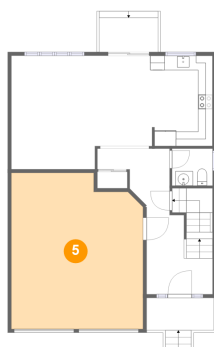
4 Floor 1 - Laundry



Dimensions: 17'0" x 8'10"
Area: 96 sq. ft
Counted as living area: No

Heated: Yes
Finished: No
Enclosed: Yes
Contiguous: Yes
Permitted: Yes
Wet space: No
Addition: No
Conversion: No

5 Floor 2 - Garage

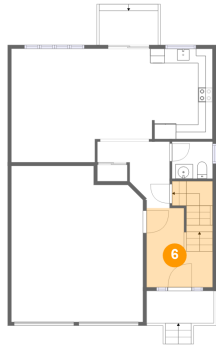


Dimensions: 18'1" x 21'5"
Area: 367 sq. ft
Counted as living area: No

Heated: No
Finished: No
Enclosed: Yes
Contiguous: Yes
Permitted: Yes
Wet space: No
Addition: No
Conversion: No

19 Don Hadden Crescent, Sunderland, Regional Municipality of Durham, Ontario, Canada, L0C 1H0

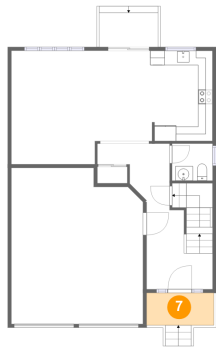
6 Floor 2 - Foyer



Dimensions: 9'1" x 10'10"
Area: 117 sq. ft
Counted as living area: Yes

Heated: Yes
Finished: Yes
Enclosed: Yes
Contiguous: Yes
Permitted: Yes
Wet space: No
Addition: No
Conversion: No

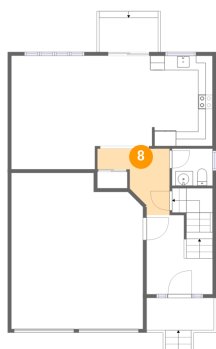
7 Floor 2 - Porch



Dimensions: 9'3" x 4'5"
Area: 41 sq. ft
Counted as living area: No

Heated: No
Finished: Yes
Enclosed: No
Contiguous: Yes
Permitted: Yes
Wet space: No
Addition: No
Conversion: No

8 Floor 2 - Hall

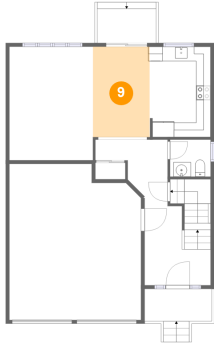


Dimensions: 9'11" x 9'1"
Area: 57 sq. ft
Counted as living area: Yes

Heated: Yes
Finished: Yes
Enclosed: Yes
Contiguous: Yes
Permitted: Yes
Wet space: No
Addition: No
Conversion: No

19 Don Hadden Crescent, Sunderland, Regional Municipality of Durham, Ontario, Canada, L0C 1H0

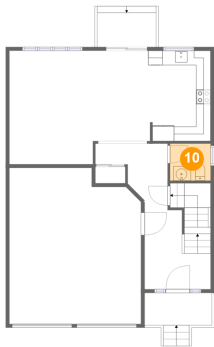
9 Floor 2 - Dining Area



Dimensions: 7'9" x 12'5"
Area: 97 sq. ft
Counted as living area: Yes

Heated: Yes
Finished: Yes
Enclosed: Yes
Contiguous: Yes
Permitted: Yes
Wet space: No
Addition: No
Conversion: No

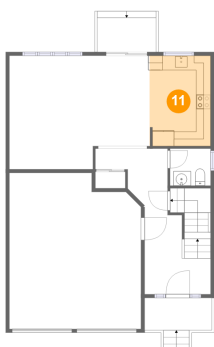
10 Floor 2 - WC



Dimensions: 5'7" x 5'1"
Area: 28 sq. ft
Counted as living area: Yes

Heated: Yes
Finished: Yes
Enclosed: Yes
Contiguous: Yes
Permitted: Yes
Wet space: Yes
Addition: No
Conversion: No

11 Floor 2 - Kitchen

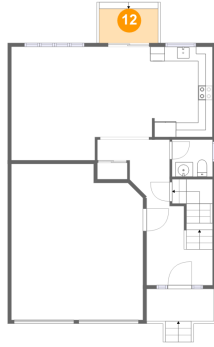


Dimensions: 8'5" x 12'5"
Area: 103 sq. ft
Counted as living area: Yes

Heated: Yes
Finished: Yes
Enclosed: Yes
Contiguous: Yes
Permitted: Yes
Wet space: No
Addition: No
Conversion: No

19 Don Hadden Crescent, Sunderland, Regional Municipality of Durham, Ontario, Canada, L0C 1H0

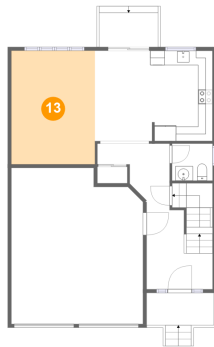
12 Floor 2 - Deck



Dimensions: 8'1" x 4'8"
Area: 38 sq. ft
Counted as living area: No

Heated: No
Finished: Yes
Enclosed: No
Contiguous: Yes
Permitted: Yes
Wet space: No
Addition: No
Conversion: No

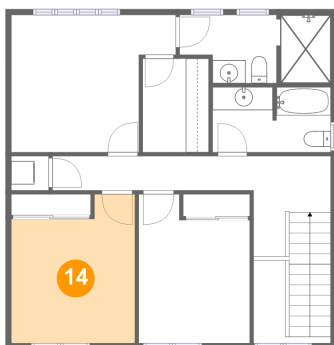
13 Floor 2 - Living Room



Dimensions: 11'5" x 15'7"
Area: 179 sq. ft
Counted as living area: Yes

Heated: Yes
Finished: Yes
Enclosed: Yes
Contiguous: Yes
Permitted: Yes
Wet space: No
Addition: No
Conversion: No

14 Floor 3 - Bedroom

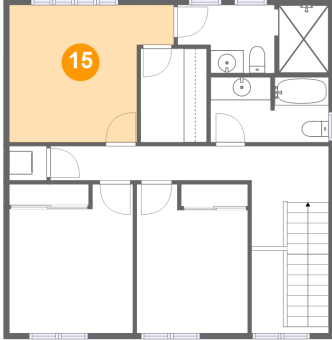


Dimensions: 10'8" x 12'11"
Area: 122 sq. ft
Counted as living area: Yes

Heated: Yes
Finished: Yes
Enclosed: Yes
Contiguous: Yes
Permitted: Yes
Wet space: No
Addition: No
Conversion: No

19 Don Hadden Crescent, Sunderland, Regional Municipality of Durham, Ontario, Canada, L0C 1H0

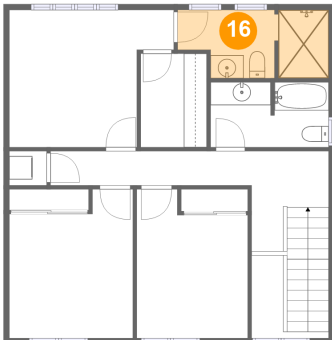
15 Floor 3 - Primary Bedroom



Dimensions: 14'2" x 11'10"
Area: 142 sq. ft
Counted as living area: Yes

Heated: Yes
Finished: Yes
Enclosed: Yes
Contiguous: Yes
Permitted: Yes
Wet space: No
Addition: No
Conversion: No

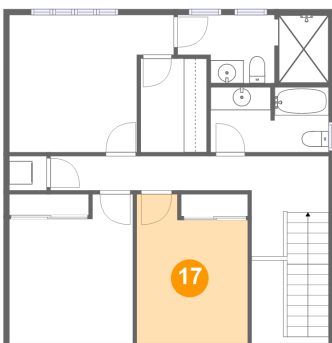
16 Floor 3 - Bath



Dimensions: 13'0" x 5'11"
Area: 69 sq. ft
Counted as living area: Yes

Heated: Yes
Finished: Yes
Enclosed: Yes
Contiguous: Yes
Permitted: Yes
Wet space: Yes
Addition: No
Conversion: No

17 Floor 3 - Bedroom

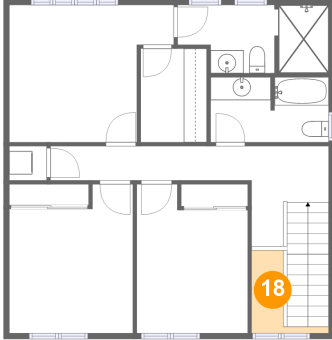


Dimensions: 9'7" x 12'11"
Area: 110 sq. ft
Counted as living area: Yes

Heated: Yes
Finished: Yes
Enclosed: Yes
Contiguous: Yes
Permitted: Yes
Wet space: No
Addition: No
Conversion: No

19 Don Hadden Crescent, Sunderland, Regional Municipality of Durham, Ontario, Canada, L0C 1H0

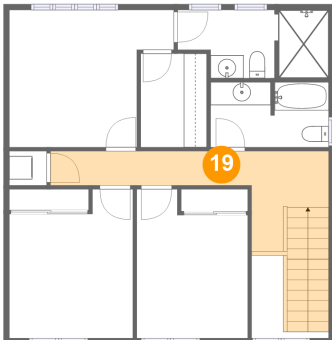
18 Floor 3 - Open To Below



Dimensions: 6'8" x 7'2"
Area: 22 sq. ft
Counted as living area: No

Heated: No
Finished: No
Enclosed: No
Contiguous: Yes
Permitted: No
Wet space: No
Addition: No
Conversion: No

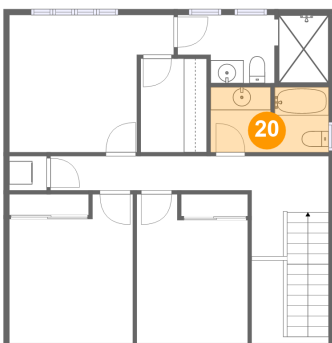
19 Floor 3 - Hall



Dimensions: 24'1" x 8'8"
Area: 138 sq. ft
Counted as living area: Yes

Heated: Yes
Finished: Yes
Enclosed: Yes
Contiguous: Yes
Permitted: Yes
Wet space: No
Addition: No
Conversion: No

20 Floor 3 - Bath

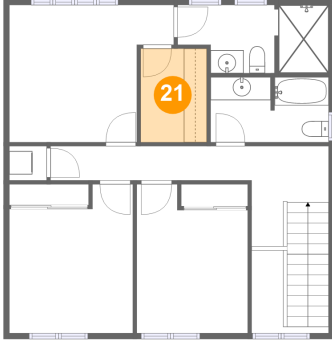


Dimensions: 10'3" x 5'8"
Area: 57 sq. ft
Counted as living area: Yes

Heated: Yes
Finished: Yes
Enclosed: Yes
Contiguous: Yes
Permitted: Yes
Wet space: Yes
Addition: No
Conversion: No

19 Don Hadden Crescent, Sunderland, Regional Municipality of Durham, Ontario, Canada, L0C 1H0

21 Floor 3 - W.I.C.



Dimensions: 5'8" x 8'1"
Area: 46 sq. ft
Counted as living area: Yes

Heated: Yes
Finished: Yes
Enclosed: Yes
Contiguous: Yes
Permitted: Yes
Wet space: No
Addition: No
Conversion: No