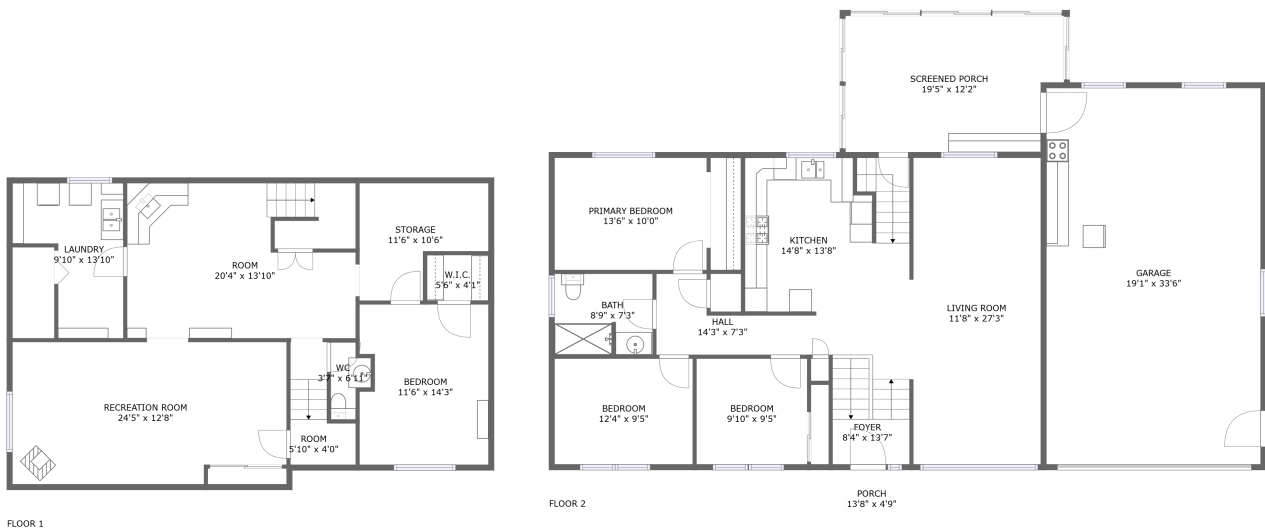



2087 Wakely St, Oakville, ON, CA



Property summary


 **1** Garages

 **4** Bedrooms

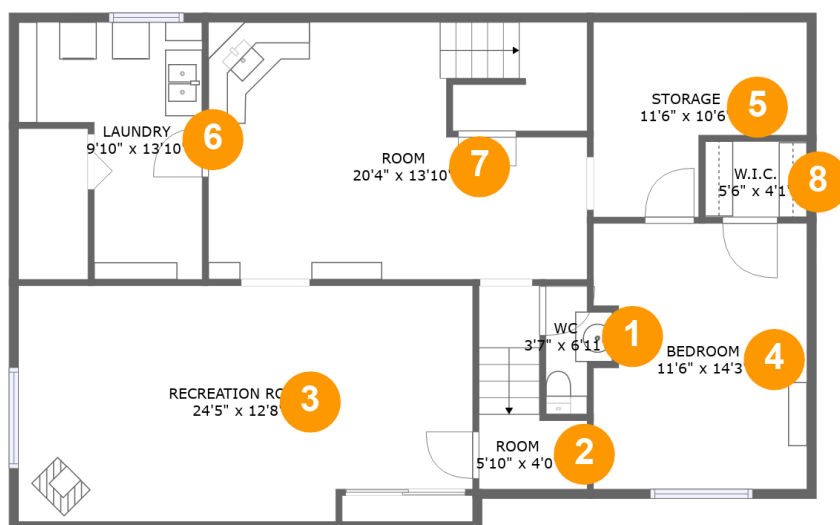
 **1** Bathrooms

 **1** Half baths

 **2** Floors

 **2,119**
Gross living
area sqft

 **3,413**
Total sqft

2087 Wakely St, Oakville, ON, CA**Room dimensions**

Floor 1

Total sqft: 1175 Living area: 867

#		Dimensions	sqft	Counted as living area
1	WC	3'7" x 6'11"	19 sq. ft	Yes
2	Room	5'10" x 4'0"	45 sq. ft	Yes
3	Recreation Room	24'5" x 12'8"	296 sq. ft	Yes
4	Bedroom	11'6" x 14'3"	159 sq. ft	No
5	Storage	11'6" x 10'6"	94 sq. ft	No
6	Laundry	9'10" x 13'10"	102 sq. ft	Yes
7	Room	20'4" x 13'10"	276 sq. ft	Yes
8	W.I.C.	5'6" x 4'1"	22 sq. ft	No

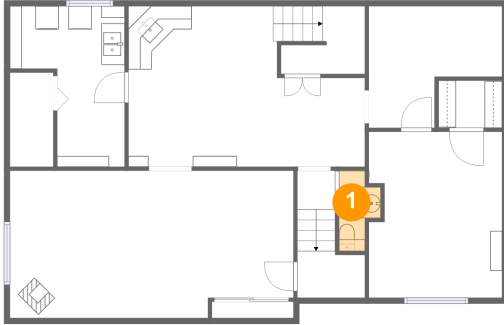
2087 Wakely St, Oakville, ON, CA**Room dimensions**

Floor 2

Total sqft: 2238 Living area: 1252

#		Dimensions	sqft	Counted as living area
9	Screened Porch	19'5" x 12'2"	223 sq. ft	No
10	Garage	19'1" x 33'6"	638 sq. ft	No
11	Living Room	11'8" x 27'3"	312 sq. ft	Yes
12	Bedroom	9'10" x 9'5"	93 sq. ft	Yes
13	Primary Bedroom	13'6" x 10'0"	135 sq. ft	Yes
14	Kitchen	14'8" x 13'8"	198 sq. ft	Yes
15	Hall	14'3" x 7'3"	66 sq. ft	Yes
16	Porch	13'8" x 4'9"	65 sq. ft	No
17	Foyer	8'4" x 13'7"	99 sq. ft	Yes
18	Bedroom	12'4" x 9'5"	116 sq. ft	Yes
19	Bath	8'9" x 7'3"	62 sq. ft	Yes

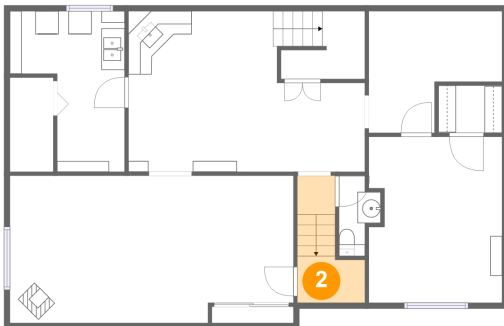
1 Floor 1 - WC



Dimensions: 3'7" x 6'11"
Area: 19 sq. ft
Counted as living area: Yes

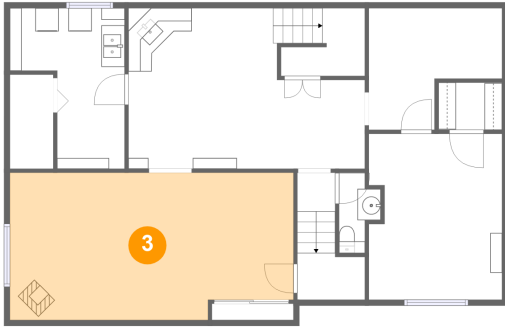
Heated: Yes
Finished: Yes
Enclosed: Yes
Contiguous: Yes
Permitted: Yes
Wet space: No
Addition: No
Conversion: No

2 Floor 1 - Room



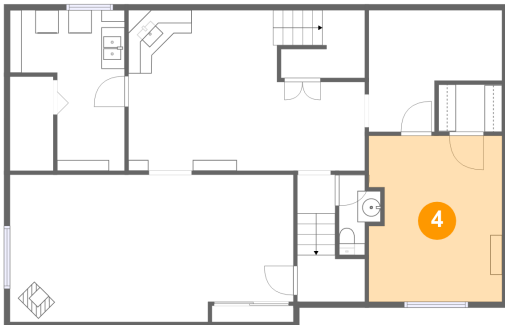
Dimensions: 5'10" x 4'0"
Area: 45 sq. ft
Counted as living area: Yes

Heated: Yes
Finished: Yes
Enclosed: Yes
Contiguous: Yes
Permitted: Yes
Wet space: No
Addition: No
Conversion: No

2087 Wakely St, Oakville, ON, CA**3 Floor 1 - Recreation Room**

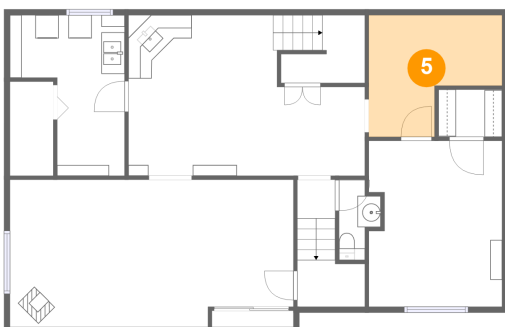
Dimensions: 24'5" x 12'8"
Area: 296 sq. ft
Counted as living area: Yes

Heated: Yes
Finished: Yes
Enclosed: Yes
Contiguous: Yes
Permitted: Yes
Wet space: No
Addition: No
Conversion: No

4 Floor 1 - Bedroom

Dimensions: 11'6" x 14'3"
Area: 159 sq. ft
Counted as living area: No

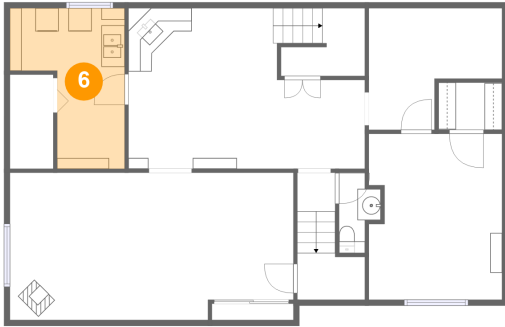
Heated: Yes
Finished: Yes
Enclosed: Yes
Contiguous: No
Permitted: Yes
Wet space: No
Addition: No
Conversion: No

5 Floor 1 - Storage

Dimensions: 11'6" x 10'6"
Area: 94 sq. ft
Counted as living area: No

Heated: No
Finished: No
Enclosed: No
Contiguous: Yes
Permitted: Yes
Wet space: No
Addition: No
Conversion: No

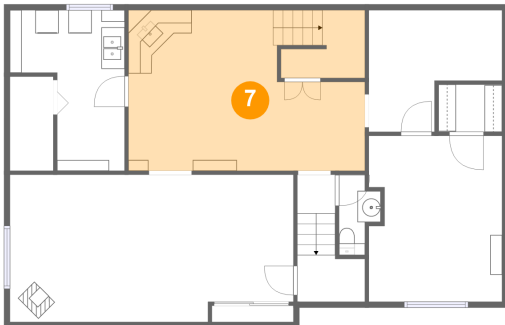
6 Floor 1 - Laundry



Dimensions: 9'10" x 13'10"
Area: 102 sq. ft
Counted as living area: Yes

Heated: Yes
Finished: Yes
Enclosed: Yes
Contiguous: Yes
Permitted: Yes
Wet space: No
Addition: No
Conversion: No

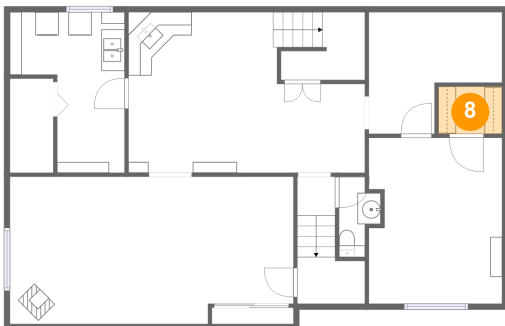
7 Floor 1 - Room



Dimensions: 20'4" x 13'10"
Area: 276 sq. ft
Counted as living area: Yes

Heated: Yes
Finished: Yes
Enclosed: Yes
Contiguous: Yes
Permitted: Yes
Wet space: No
Addition: No
Conversion: No

8 Floor 1 - W.I.C.

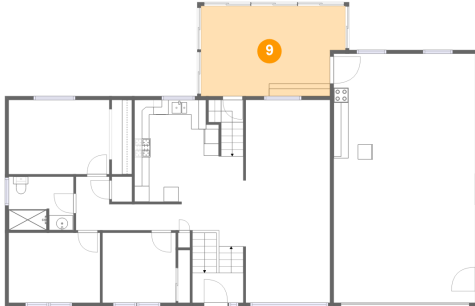


Dimensions: 5'6" x 4'1"
Area: 22 sq. ft
Counted as living area: No

Heated: Yes
Finished: Yes
Enclosed: Yes
Contiguous: No
Permitted: Yes
Wet space: No
Addition: No
Conversion: No

2087 Wakely St, Oakville, ON, CA

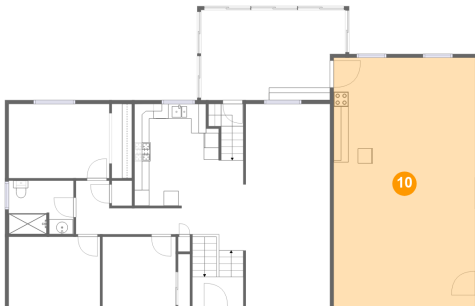
9 Floor 2 - Screened Porch



Dimensions: 19'5" x 12'2"
Area: 223 sq. ft
Counted as living area: No

Heated: No
Finished: Yes
Enclosed: No
Contiguous: Yes
Permitted: Yes
Wet space: No
Addition: No
Conversion: No

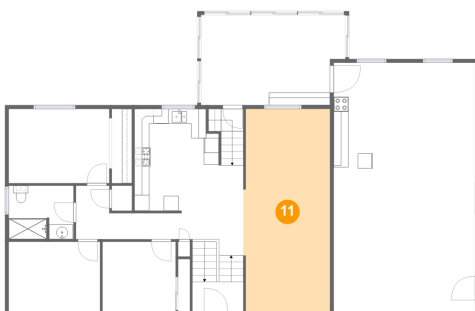
10 Floor 2 - Garage



Dimensions: 19'1" x 33'6"
Area: 638 sq. ft
Counted as living area: No

Heated: No
Finished: No
Enclosed: Yes
Contiguous: Yes
Permitted: Yes
Wet space: No
Addition: No
Conversion: No

11 Floor 2 - Living Room



Dimensions: 11'8" x 27'3"
Area: 312 sq. ft
Counted as living area: Yes

Heated: Yes
Finished: Yes
Enclosed: Yes
Contiguous: Yes
Permitted: Yes
Wet space: No
Addition: No
Conversion: No

2087 Wakely St, Oakville, ON, CA

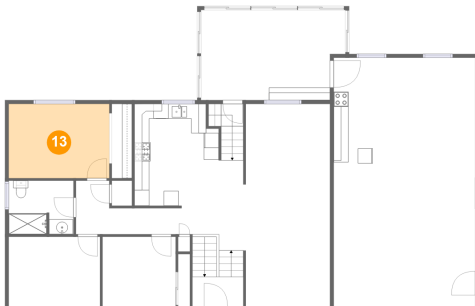
12 Floor 2 - Bedroom



Dimensions: 9'10" x 9'5"
Area: 93 sq. ft
Counted as living area: Yes

Heated: Yes
Finished: Yes
Enclosed: Yes
Contiguous: Yes
Permitted: Yes
Wet space: No
Addition: No
Conversion: No

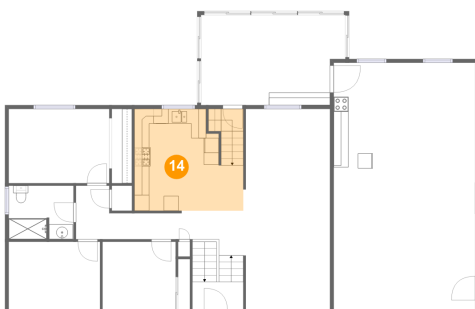
13 Floor 2 - Primary Bedroom



Dimensions: 13'6" x 10'0"
Area: 135 sq. ft
Counted as living area: Yes

Heated: Yes
Finished: Yes
Enclosed: Yes
Contiguous: Yes
Permitted: Yes
Wet space: No
Addition: No
Conversion: No

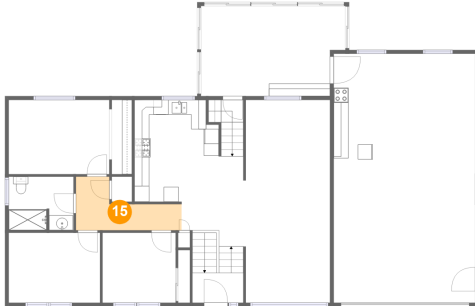
14 Floor 2 - Kitchen



Dimensions: 14'8" x 13'8"
Area: 198 sq. ft
Counted as living area: Yes

Heated: Yes
Finished: Yes
Enclosed: Yes
Contiguous: Yes
Permitted: Yes
Wet space: No
Addition: No
Conversion: No

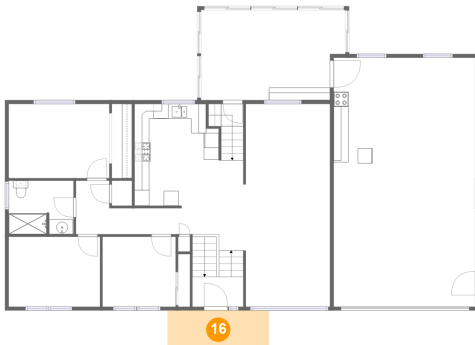
15 Floor 2 - Hall



Dimensions: 14'3" x 7'3"
Area: 66 sq. ft
Counted as living area: Yes

Heated: Yes
Finished: Yes
Enclosed: Yes
Contiguous: Yes
Permitted: Yes
Wet space: No
Addition: No
Conversion: No

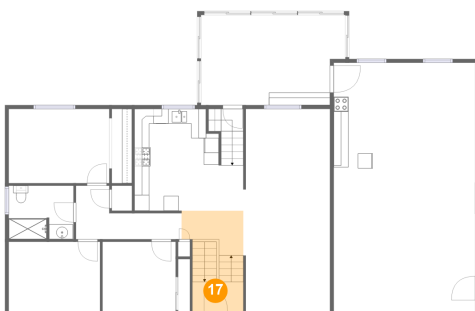
16 Floor 2 - Porch



Dimensions: 13'8" x 4'9"
Area: 65 sq. ft
Counted as living area: No

Heated: No
Finished: Yes
Enclosed: No
Contiguous: Yes
Permitted: Yes
Wet space: No
Addition: No
Conversion: No

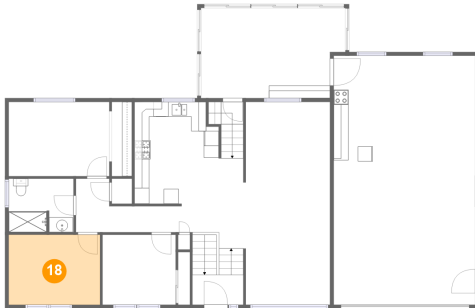
17 Floor 2 - Foyer



Dimensions: 8'4" x 13'7"
Area: 99 sq. ft
Counted as living area: Yes

Heated: Yes
Finished: Yes
Enclosed: Yes
Contiguous: Yes
Permitted: Yes
Wet space: No
Addition: No
Conversion: No

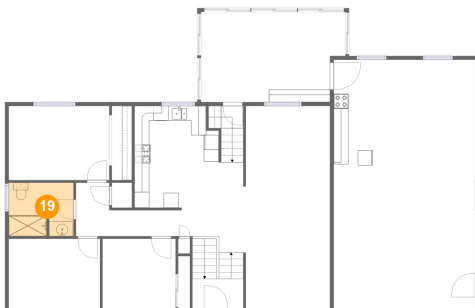
18 Floor 2 - Bedroom



Dimensions: 12'4" x 9'5"
Area: 116 sq. ft
Counted as living area: Yes

Heated: Yes
Finished: Yes
Enclosed: Yes
Contiguous: Yes
Permitted: Yes
Wet space: No
Addition: No
Conversion: No

19 Floor 2 - Bath



Dimensions: 8'9" x 7'3"
Area: 62 sq. ft
Counted as living area: Yes

Heated: Yes
Finished: Yes
Enclosed: Yes
Contiguous: Yes
Permitted: Yes
Wet space: Yes
Addition: No
Conversion: No