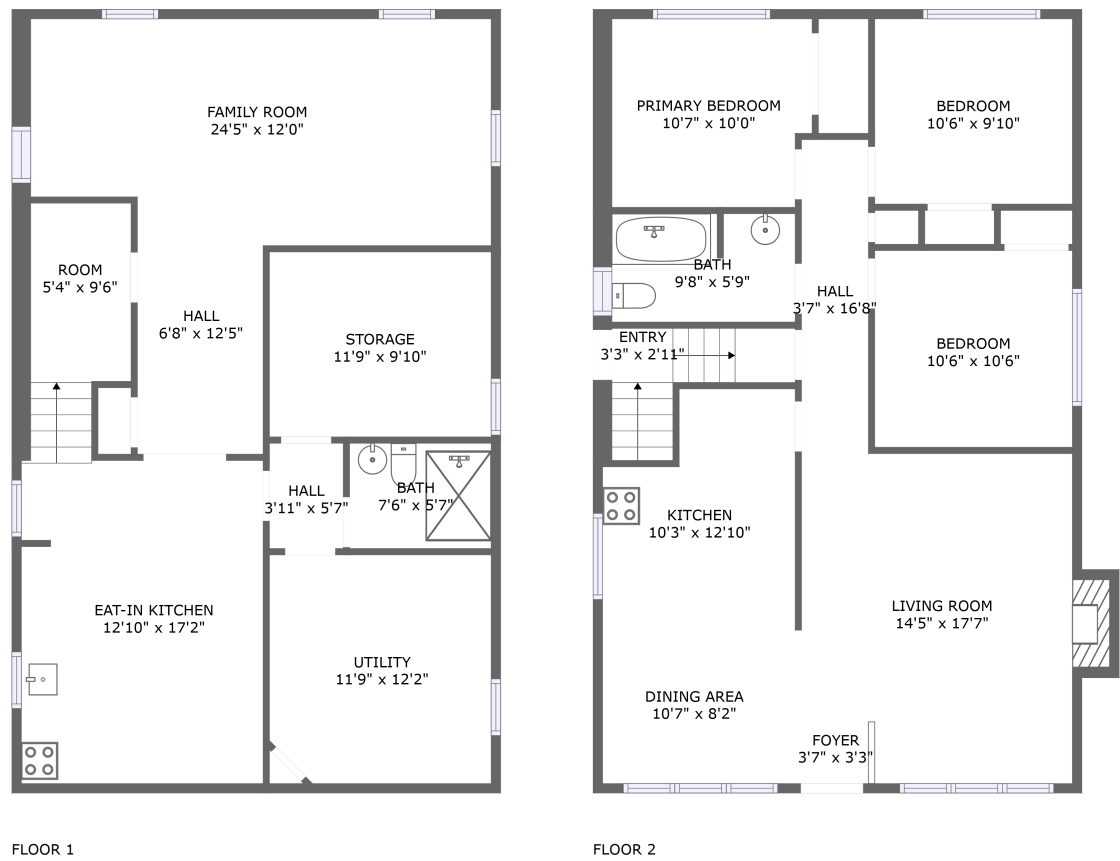




Home report


624 Cochrane Road, Rosedale, King's Forest, Hamilton, Ontario, Canada, L8K 3H6




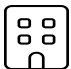
Property summary


 **0** Garages


 **3** Bedrooms

 **2** Bathrooms

 **0** Half baths

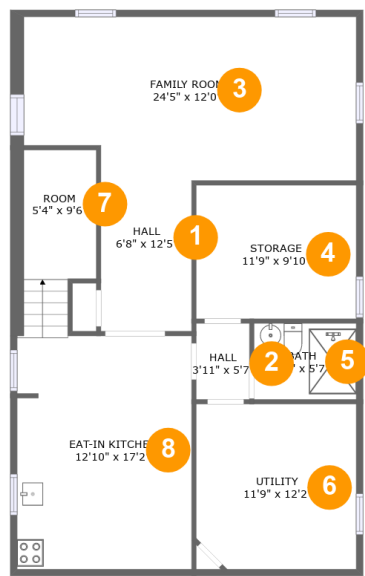
 **2** Floors

 **1,888** Gross living area sqft

 **2,176** Total sqft

Home report

624 Cochrane Road, Rosedale, King's Forest, Hamilton, Ontario, Canada, L8K 3H6



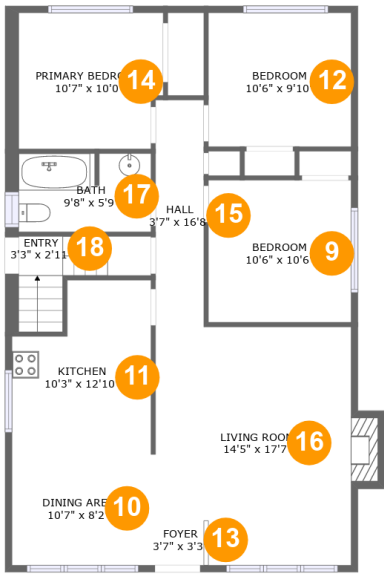
Room dimensions

Floor 1 Total sqft: 1083 Living area: 806

#		Dimensions	sqft	Counted as living area
1	Hall	6'8" x 12'5"	83 sq. ft	Yes
2	Hall	3'11" x 5'7"	22 sq. ft	Yes
3	Family Room	24'5" x 12'0"	272 sq. ft	Yes
4	Storage	11'9" x 9'10"	116 sq. ft	No
5	Bath	7'6" x 5'7"	42 sq. ft	Yes
6	Utility	11'9" x 12'2"	141 sq. ft	No
7	Room	5'4" x 9'6"	64 sq. ft	Yes
8	Eat-in Kitchen	12'10" x 17'2"	220 sq. ft	Yes

Home report

624 Cochrane Road, Rosedale, King's Forest, Hamilton, Ontario, Canada, L8K 3H6

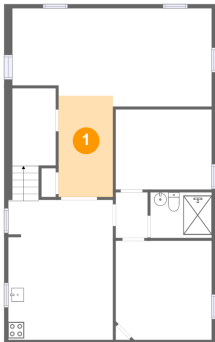


Room dimensions

Floor 2 Total sqft: 1093 Living area: 1082

#		Dimensions	sqft	Counted as living area
9	Bedroom	10'6" x 10'6"	110 sq. ft	Yes
10	Dining Area	10'7" x 8'2"	86 sq. ft	Yes
11	Kitchen	10'3" x 12'10"	115 sq. ft	Yes
12	Bedroom	10'6" x 9'10"	104 sq. ft	Yes
13	Foyer	3'7" x 3'3"	13 sq. ft	Yes
14	Primary Bedroom	10'7" x 10'0"	103 sq. ft	Yes
15	Hall	3'7" x 16'8"	59 sq. ft	Yes
16	Living Room	14'5" x 17'7"	249 sq. ft	Yes
17	Bath	9'8" x 5'9"	55 sq. ft	Yes
18	Entry	3'3" x 2'11"	42 sq. ft	Yes

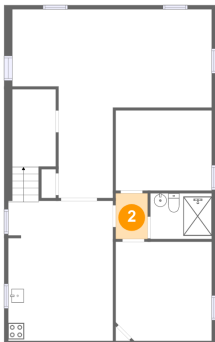
1 Floor 1 - Hall



Dimensions: 6'8" x 12'5"
Area: 83 sq. ft
Counted as living area: Yes

Heated: Yes
Finished: Yes
Enclosed: Yes
Contiguous: Yes
Permitted: Yes
Wet space: No
Addition: No
Conversion: No

2 Floor 1 - Hall

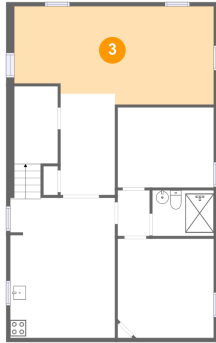


Dimensions: 3'11" x 5'7"
Area: 22 sq. ft
Counted as living area: Yes

Heated: Yes
Finished: Yes
Enclosed: Yes
Contiguous: Yes
Permitted: Yes
Wet space: No
Addition: No
Conversion: No

624 Cochrane Road, Rosedale, King's Forest, Hamilton, Ontario,
Canada, L8K 3H6

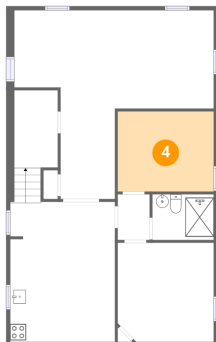
3 Floor 1 - Family Room



Dimensions: 24'5" x 12'0"
Area: 272 sq. ft
Counted as living area: Yes

Heated: Yes
Finished: Yes
Enclosed: Yes
Contiguous: Yes
Permitted: Yes
Wet space: No
Addition: No
Conversion: No

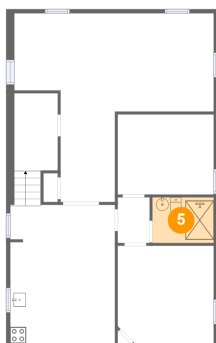
4 Floor 1 - Storage



Dimensions: 11'9" x 9'10"
Area: 116 sq. ft
Counted as living area: No

Heated: No
Finished: No
Enclosed: No
Contiguous: Yes
Permitted: Yes
Wet space: No
Addition: No
Conversion: No

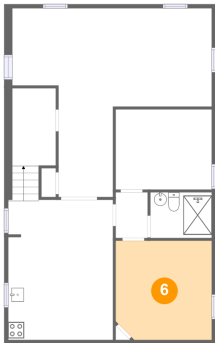
5 Floor 1 - Bath



Dimensions: 7'6" x 5'7"
Area: 42 sq. ft
Counted as living area: Yes

Heated: Yes
Finished: Yes
Enclosed: Yes
Contiguous: Yes
Permitted: Yes
Wet space: Yes
Addition: No
Conversion: No

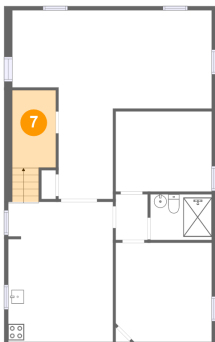
6 Floor 1 - Utility



Dimensions: 11'9" x 12'2"
Area: 141 sq. ft
Counted as living area: No

Heated: Yes
Finished: No
Enclosed: Yes
Contiguous: Yes
Permitted: Yes
Wet space: No
Addition: No
Conversion: No

7 Floor 1 - Room



Dimensions: 5'4" x 9'6"
Area: 64 sq. ft
Counted as living area: Yes

Heated: Yes
Finished: Yes
Enclosed: Yes
Contiguous: Yes
Permitted: Yes
Wet space: No
Addition: No
Conversion: No

8 Floor 1 - Eat-in Kitchen



Dimensions: 12'10" x 17'2"
Area: 220 sq. ft
Counted as living area: Yes

Heated: Yes
Finished: Yes
Enclosed: Yes
Contiguous: Yes
Permitted: Yes
Wet space: No
Addition: No
Conversion: No

Home report

624 Cochrane Road, Rosedale, King's Forest, Hamilton, Ontario, Canada, L8K 3H6

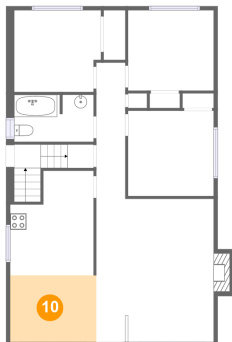
9 Floor 2 - Bedroom



Dimensions: 10'6" x 10'6"
Area: 110 sq. ft
Counted as living area: Yes

Heated: Yes
Finished: Yes
Enclosed: Yes
Contiguous: Yes
Permitted: Yes
Wet space: No
Addition: No
Conversion: No

10 Floor 2 - Dining Area



Dimensions: 10'7" x 8'2"
Area: 86 sq. ft
Counted as living area: Yes

Heated: Yes
Finished: Yes
Enclosed: Yes
Contiguous: Yes
Permitted: Yes
Wet space: No
Addition: No
Conversion: No

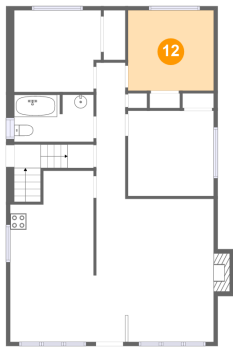
11 Floor 2 - Kitchen



Dimensions: 10'3" x 12'10"
Area: 115 sq. ft
Counted as living area: Yes

Heated: Yes
Finished: Yes
Enclosed: Yes
Contiguous: Yes
Permitted: Yes
Wet space: No
Addition: No
Conversion: No

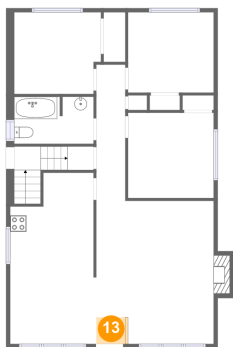
12 Floor 2 - Bedroom



Dimensions: 10'6" x 9'10"
Area: 104 sq. ft
Counted as living area: Yes

Heated: Yes
Finished: Yes
Enclosed: Yes
Contiguous: Yes
Permitted: Yes
Wet space: No
Addition: No
Conversion: No

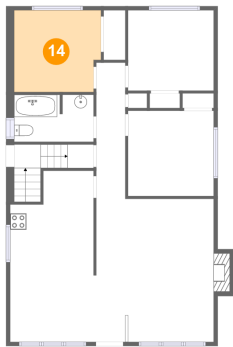
13 Floor 2 - Foyer



Dimensions: 3'7" x 3'3"
Area: 13 sq. ft
Counted as living area: Yes

Heated: Yes
Finished: Yes
Enclosed: Yes
Contiguous: Yes
Permitted: Yes
Wet space: No
Addition: No
Conversion: No

14 Floor 2 - Primary Bedroom



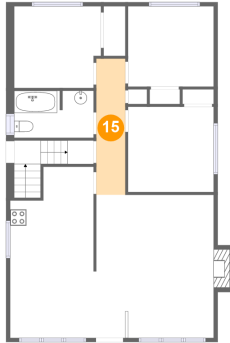
Dimensions: 10'7" x 10'0"
Area: 103 sq. ft
Counted as living area: Yes

Heated: Yes
Finished: Yes
Enclosed: Yes
Contiguous: Yes
Permitted: Yes
Wet space: No
Addition: No
Conversion: No

Home report

624 Cochrane Road, Rosedale, King's Forest, Hamilton, Ontario, Canada, L8K 3H6

15 Floor 2 - Hall



Dimensions: 3'7" x 16'8"
Area: 59 sq. ft
Counted as living area: Yes

Heated: Yes
Finished: Yes
Enclosed: Yes
Contiguous: Yes
Permitted: Yes
Wet space: No
Addition: No
Conversion: No

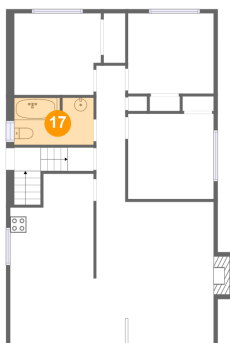
16 Floor 2 - Living Room



Dimensions: 14'5" x 17'7"
Area: 249 sq. ft
Counted as living area: Yes

Heated: Yes
Finished: Yes
Enclosed: Yes
Contiguous: Yes
Permitted: Yes
Wet space: No
Addition: No
Conversion: No

17 Floor 2 - Bath

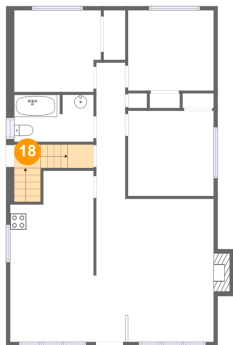


Dimensions: 9'8" x 5'9"
Area: 55 sq. ft
Counted as living area: Yes

Heated: Yes
Finished: Yes
Enclosed: Yes
Contiguous: Yes
Permitted: Yes
Wet space: Yes
Addition: No
Conversion: No

624 Cochrane Road, Rosedale, King's Forest, Hamilton, Ontario, Canada, L8K 3H6

18 Floor 2 - Entry



Dimensions: 3'3" x 2'11"
Area: 42 sq. ft
Counted as living area: Yes

Heated: Yes
Finished: Yes
Enclosed: Yes
Contiguous: Yes
Permitted: Yes
Wet space: No
Addition: No
Conversion: No