

Home report

2809 Avenel Avenue Southwest, Roanoke, Virginia 24015, United States



Total Area: 1578 sq. ft

Below Ground: 0 sq. ft, Floor 2: 926 sq. ft, Floor 3: 652 sq. ft

Excluded: Basement 661 sq. ft, Garage 211 sq. ft, Workshop 115 sq. ft, Carport 655 sq. ft, Patio 493 sq. ft, Screened porch 57 sq. ft, Walls: 211 sq. ft

Property summary

3 Floors

3 Bedrooms

1 Bathrooms

Home report

**2809 Avenel Avenue Southwest, Roanoke, Virginia 24015,
United States**



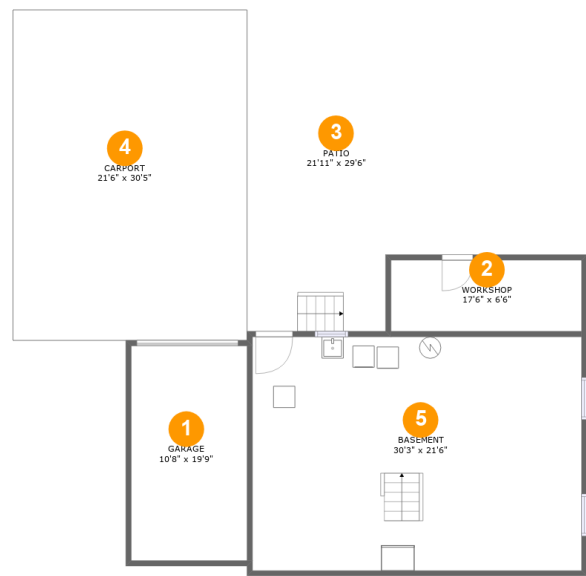
1
Half baths



1
Garages

Home report

2809 Avenel Avenue Southwest, Roanoke, Virginia 24015,
United States



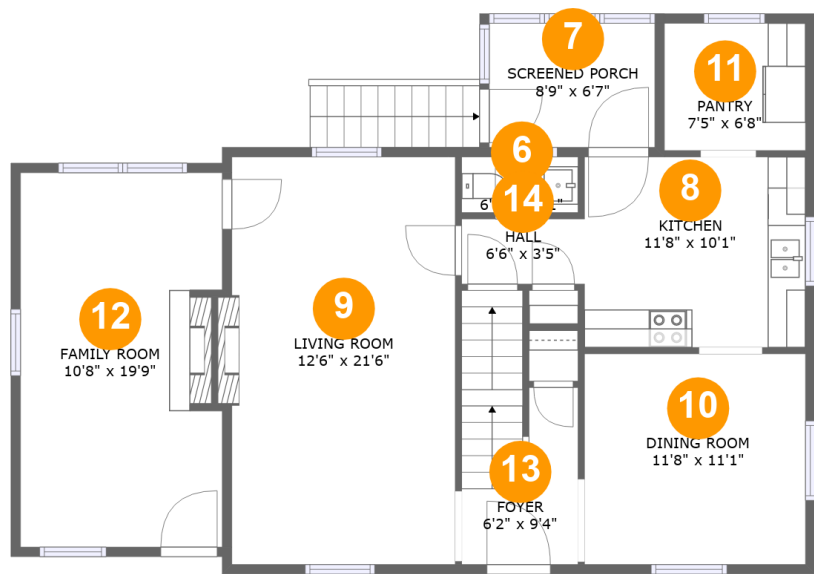
Room dimensions

Floor 1 Below ground Total:0sqft Excluded: 2135sqft

#		Max Dimensions	sqft	Included
1	Garage	10'8" x 19'9"	211 sq. ft	No
2	Workshop	17'6" x 6'6"	115 sq. ft	No
3	Patio	21'11" x 29'6"	493 sq. ft	No
4	Carport	21'6" x 30'5"	655 sq. ft	No
5	Basement	30'3" x 21'6"	652 sq. ft	No

Home report

2809 Avenel Avenue Southwest, Roanoke, Virginia 24015,
United States



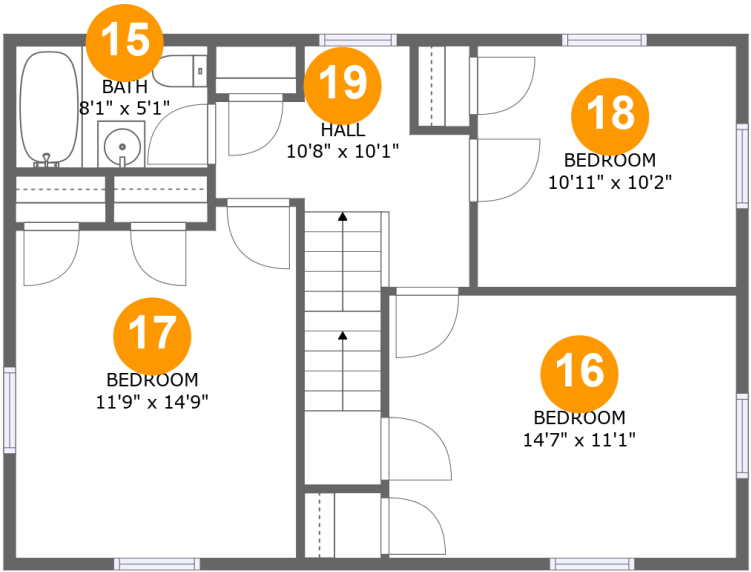
Room dimensions

Floor 2 Total:926sqft Excluded: 57sqft

#		Max Dimensions	sqft	Included
6	WC	6'2" x 2'11"	18 sq. ft	Yes
7	Screened Porch	8'9" x 6'7"	57 sq. ft	No
8	Kitchen	11'8" x 10'1"	117 sq. ft	Yes
9	Living Room	12'6" x 21'6"	258 sq. ft	Yes
10	Dining Room	11'8" x 11'1"	130 sq. ft	Yes
11	Pantry	7'5" x 6'8"	50 sq. ft	Yes
12	Family Room	10'8" x 19'9"	206 sq. ft	Yes
13	Foyer	6'2" x 9'4"	73 sq. ft	Yes
14	Hall	6'6" x 3'5"	22 sq. ft	Yes

Home report

2809 Avenel Avenue Southwest, Roanoke, Virginia 24015,
United States



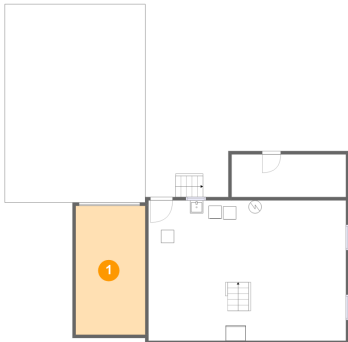
Room dimensions

Floor 3 Total:652sqft Excluded: 0sqft

#		Max Dimensions	sqft	Included
15	Bath	8'1" x 5'1"	41 sq. ft	Yes
16	Bedroom	14'7" x 11'1"	161 sq. ft	Yes
17	Bedroom	11'9" x 14'9"	166 sq. ft	Yes
18	Bedroom	10'11" x 10'2"	110 sq. ft	Yes
19	Hall	10'8" x 10'1"	103 sq. ft	Yes

2809 Avenel Avenue Southwest, Roanoke, Virginia 24015,
United States

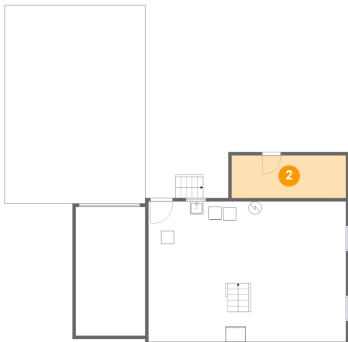
1 Floor 1 - Garage



Max Dimensions: 10'8" x 19'9"
Calculated Area: 211 sq. ft
Included: No

Heated: No
Finished: No
Enclosed: Yes
Contiguous: Yes
Permitted: Yes
Wet space: No
Addition: No
Conversion: No

2 Floor 1 - Workshop

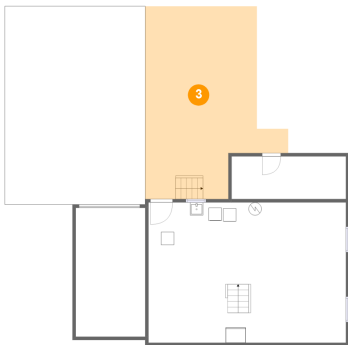


Max Dimensions: 17'6" x 6'6"
Calculated Area: 115 sq. ft
Included: No

Heated: No
Finished: No
Enclosed: Yes
Contiguous: Yes
Permitted: Yes
Wet space: No
Addition: No
Conversion: No

2809 Avenel Avenue Southwest, Roanoke, Virginia 24015,
United States

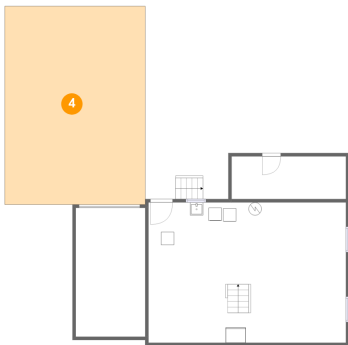
3 Floor 1 - Patio



Max Dimensions: 21'11" x 29'6"
Calculated Area: 493 sq. ft
Included: No

Heated: No
Finished: Yes
Enclosed: No
Contiguous: Yes
Permitted: Yes
Wet space: No
Addition: No
Conversion: No

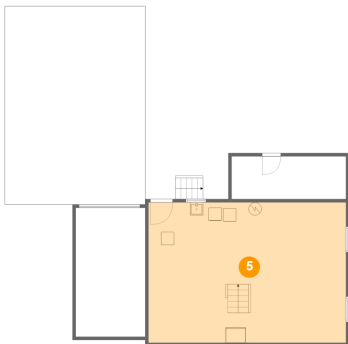
4 Floor 1 - Carport



Max Dimensions: 21'6" x 30'5"
Calculated Area: 655 sq. ft
Included: No

Heated: No
Finished: Yes
Enclosed: No
Contiguous: Yes
Permitted: Yes
Wet space: No
Addition: No
Conversion: No

5 Floor 1 - Basement

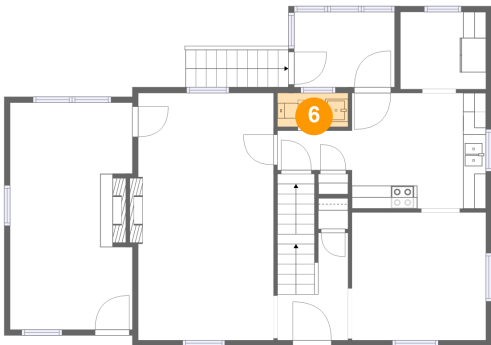


Max Dimensions: 30'3" x 21'6"
Calculated Area: 652 sq. ft
Included: No

Heated: Yes
Finished: No
Enclosed: Yes
Contiguous: Yes
Permitted: Yes
Wet space: No
Addition: No
Conversion: No

2809 Avenel Avenue Southwest, Roanoke, Virginia 24015,
United States

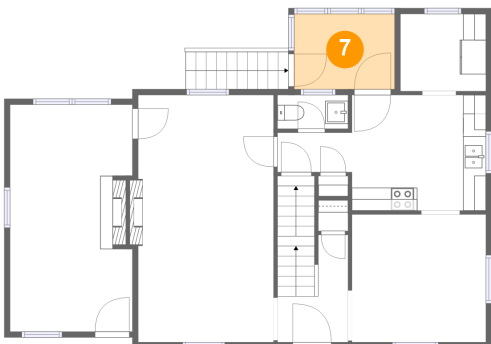
6 Floor 2 - WC



Max Dimensions: 6'2" x 2'11"
Calculated Area: 18 sq. ft
Included: Yes

Heated: Yes
Finished: Yes
Enclosed: Yes
Contiguous: Yes
Permitted: Yes
Wet space: Yes
Addition: No
Conversion: No

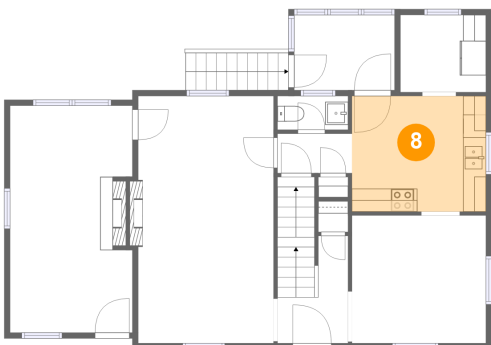
7 Floor 2 - Screened Porch



Max Dimensions: 8'9" x 6'7"
Calculated Area: 57 sq. ft
Included: No

Heated: No
Finished: Yes
Enclosed: No
Contiguous: Yes
Permitted: Yes
Wet space: No
Addition: No
Conversion: No

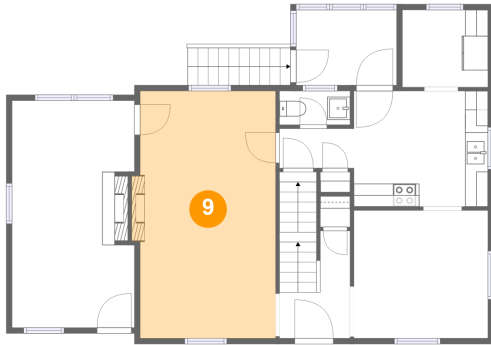
8 Floor 2 - Kitchen



Max Dimensions: 11'8" x 10'1"
Calculated Area: 117 sq. ft
Included: Yes

Heated: Yes
Finished: Yes
Enclosed: Yes
Contiguous: Yes
Permitted: Yes
Wet space: No
Addition: No
Conversion: No

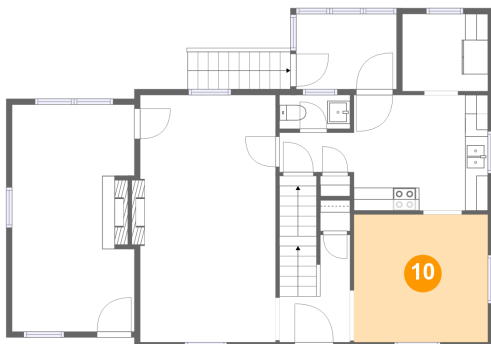
9 Floor 2 - Living Room



Max Dimensions: 12'6" x 21'6"
Calculated Area: 258 sq. ft
Included: Yes

Heated: Yes
Finished: Yes
Enclosed: Yes
Contiguous: Yes
Permitted: Yes
Wet space: No
Addition: No
Conversion: No

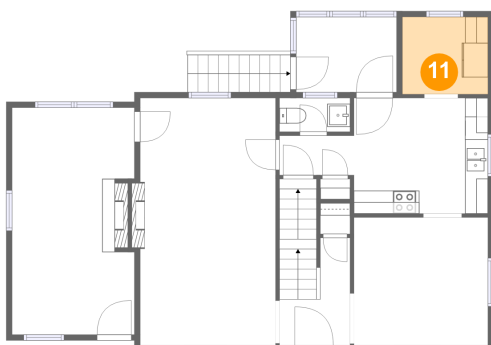
10 Floor 2 - Dining Room



Max Dimensions: 11'8" x 11'1"
Calculated Area: 130 sq. ft
Included: Yes

Heated: Yes
Finished: Yes
Enclosed: Yes
Contiguous: Yes
Permitted: Yes
Wet space: No
Addition: No
Conversion: No

11 Floor 2 - Pantry



Max Dimensions: 7'5" x 6'8"
Calculated Area: 50 sq. ft
Included: Yes

Heated: Yes
Finished: Yes
Enclosed: Yes
Contiguous: Yes
Permitted: Yes
Wet space: No
Addition: No
Conversion: No

2809 Avenel Avenue Southwest, Roanoke, Virginia 24015,
United States

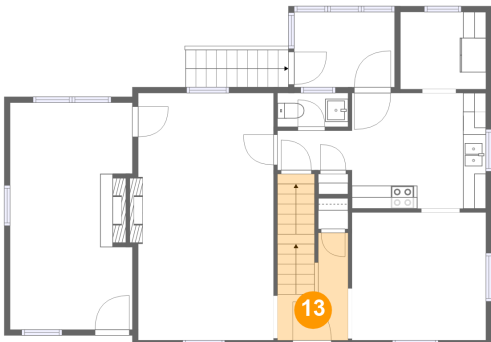
12 Floor 2 - Family Room



Max Dimensions: 10'8" x 19'9"
Calculated Area: 206 sq. ft
Included: Yes

Heated: Yes
Finished: Yes
Enclosed: Yes
Contiguous: Yes
Permitted: Yes
Wet space: No
Addition: No
Conversion: No

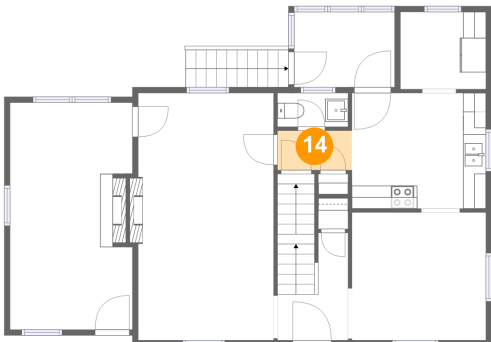
13 Floor 2 - Foyer



Max Dimensions: 6'2" x 9'4"
Calculated Area: 73 sq. ft
Included: Yes

Heated: Yes
Finished: Yes
Enclosed: Yes
Contiguous: Yes
Permitted: Yes
Wet space: No
Addition: No
Conversion: No

14 Floor 2 - Hall

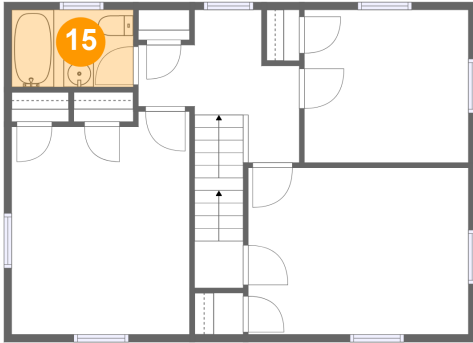


Max Dimensions: 6'6" x 3'5"
Calculated Area: 22 sq. ft
Included: Yes

Heated: Yes
Finished: Yes
Enclosed: Yes
Contiguous: Yes
Permitted: Yes
Wet space: No
Addition: No
Conversion: No

2809 Avenel Avenue Southwest, Roanoke, Virginia 24015,
United States

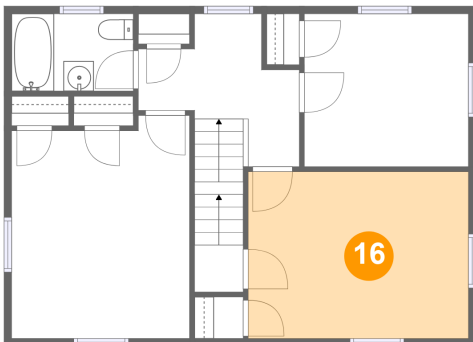
15 Floor 3 - Bath



Max Dimensions: 8'1" x 5'1"
Calculated Area: 41 sq. ft
Included: Yes

Heated: Yes
Finished: Yes
Enclosed: Yes
Contiguous: Yes
Permitted: Yes
Wet space: Yes
Addition: No
Conversion: No

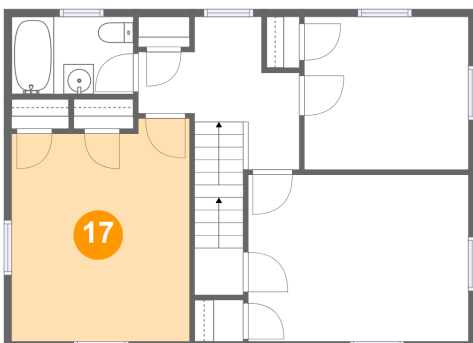
16 Floor 3 - Bedroom



Max Dimensions: 14'7" x 11'1"
Calculated Area: 161 sq. ft
Included: Yes

Heated: Yes
Finished: Yes
Enclosed: Yes
Contiguous: Yes
Permitted: Yes
Wet space: No
Addition: No
Conversion: No

17 Floor 3 - Bedroom

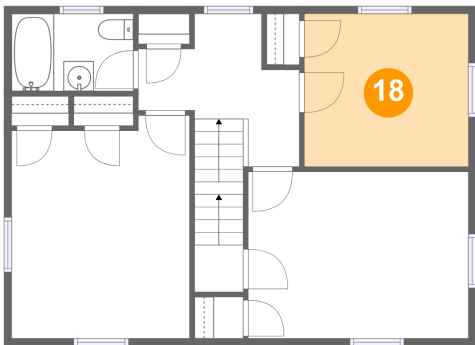


Max Dimensions: 11'9" x 14'9"
Calculated Area: 166 sq. ft
Included: Yes

Heated: Yes
Finished: Yes
Enclosed: Yes
Contiguous: Yes
Permitted: Yes
Wet space: No
Addition: No
Conversion: No

2809 Avenel Avenue Southwest, Roanoke, Virginia 24015,
United States

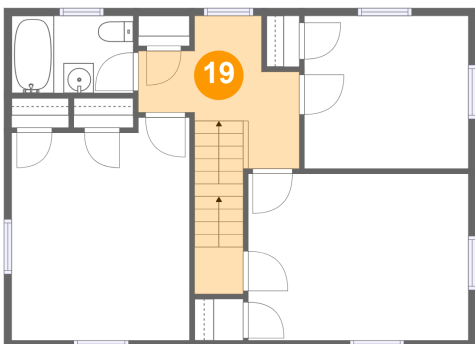
18 Floor 3 - Bedroom



Max Dimensions: 10'11" x 10'2"
Calculated Area: 110 sq. ft
Included: Yes

Heated: Yes
Finished: Yes
Enclosed: Yes
Contiguous: Yes
Permitted: Yes
Wet space: No
Addition: No
Conversion: No

19 Floor 3 - Hall



Max Dimensions: 10'8" x 10'1"
Calculated Area: 103 sq. ft
Included: Yes

Heated: Yes
Finished: Yes
Enclosed: Yes
Contiguous: Yes
Permitted: Yes
Wet space: No
Addition: No
Conversion: No