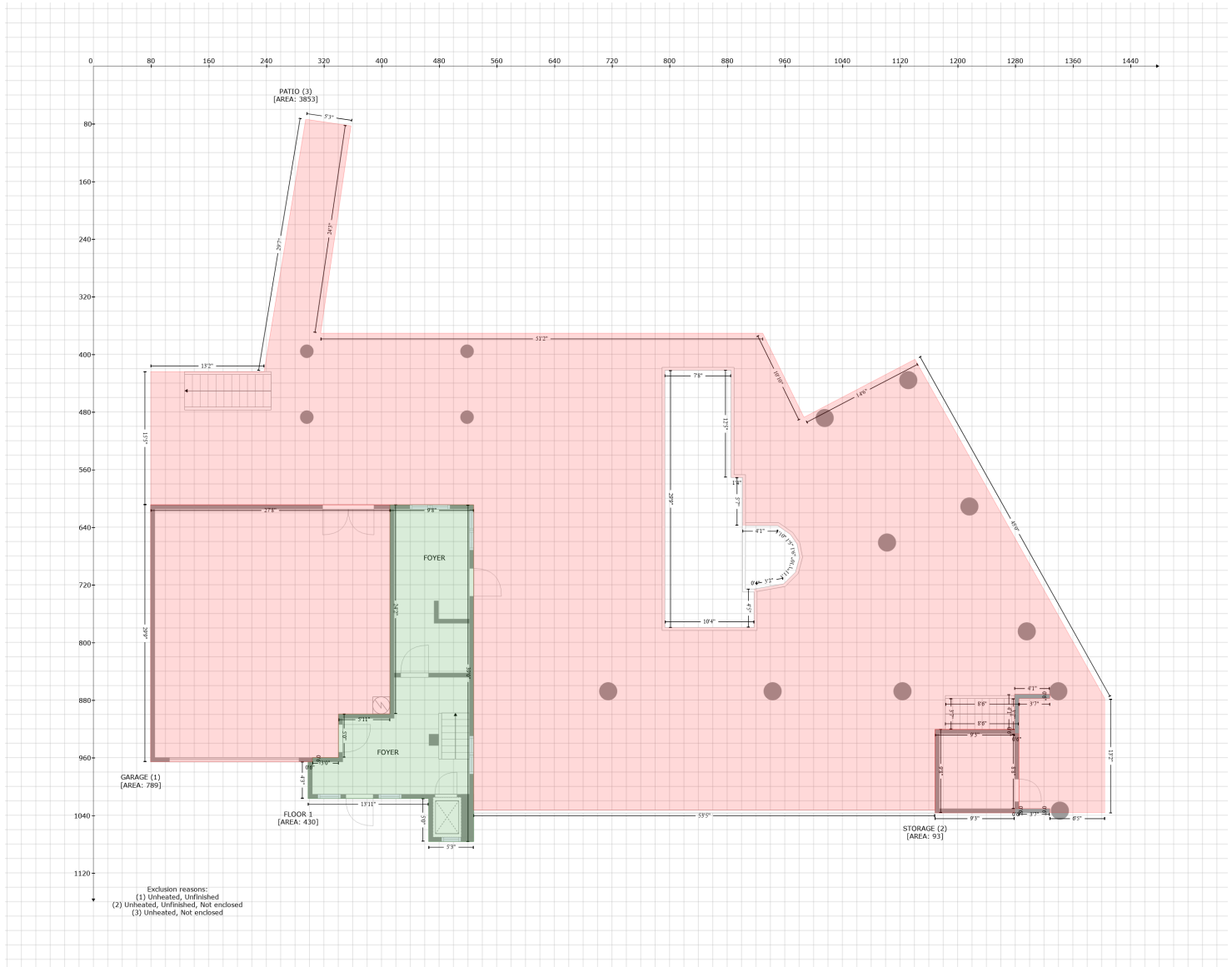


435 115th Avenue, Isle of Palms, Treasure Island, Pinellas County, Florida, United States, 33706

Gross Living Area: 3491 sq. ft



Space	Area (sq. ft)	Calculation
FLOOR 1 (Living area)	430	$-(528 + 528) * (609 - 1076.6) + (528 + 465.4) * (1076.6 - 1076.6) + (465.4 + 465.4) * (1076.6 - 1016.9) + (465.4 + 298) * (1016.9 - 1016.9) + (298 + 298) * (1016.9 - 965.9) + (298 + 304) * (965.9 - 965.9) + (304 + 304) * (965.9 - 959.9) + (304 + 340.3) * (959.9 - 959.9) + (340.3 + 340.3) * (959.9 - 899.4) + (340.3 + 411.6) * (899.4 - 899.4) + (411.6 + 411.6) * (899.4 - 609) + (411.6 + 528) * (609 - 609)) * 0.5 * 0.00694$
GARAGE (Non-living area)	789	$-(411.6 + 411.6) * (609 - 899.4) + (411.6 + 340.3) * (899.4 - 899.4) + (340.3 + 340.3) * (899.4 - 959.9) + (340.3 + 304) * (959.9 - 959.9) + (304 + 304) * (959.9 - 965.9) + (304 + 79.3) * (965.9 - 965.9) + (79.3 + 79.3) * (965.9 - 609) + (79.3 + 411.6) * (609 - 609)) * 0.5 * 0.00694$
STORAGE (Non-living area)	93	$-(1279.1 + 1279.1) * (920.9 - 926.9) + (1279.1 + 1285.1) * (926.9 - 926.9) + (1285.1 + 1285.1) * (926.9 - 1030.9) + (1285.1 + 1279.1) * (1030.9 - 1030.9) + (1279.1 + 1279.1) * (1030.9 - 1036.9) + (1279.1 + 1168.6) * (1036.9 - 1036.9) + (1168.6 + 1168.6) * (1036.9 - 920.9) + (1168.6 + 1279.1) * (920.9 - 920.9)) * 0.5 * 0.00694$

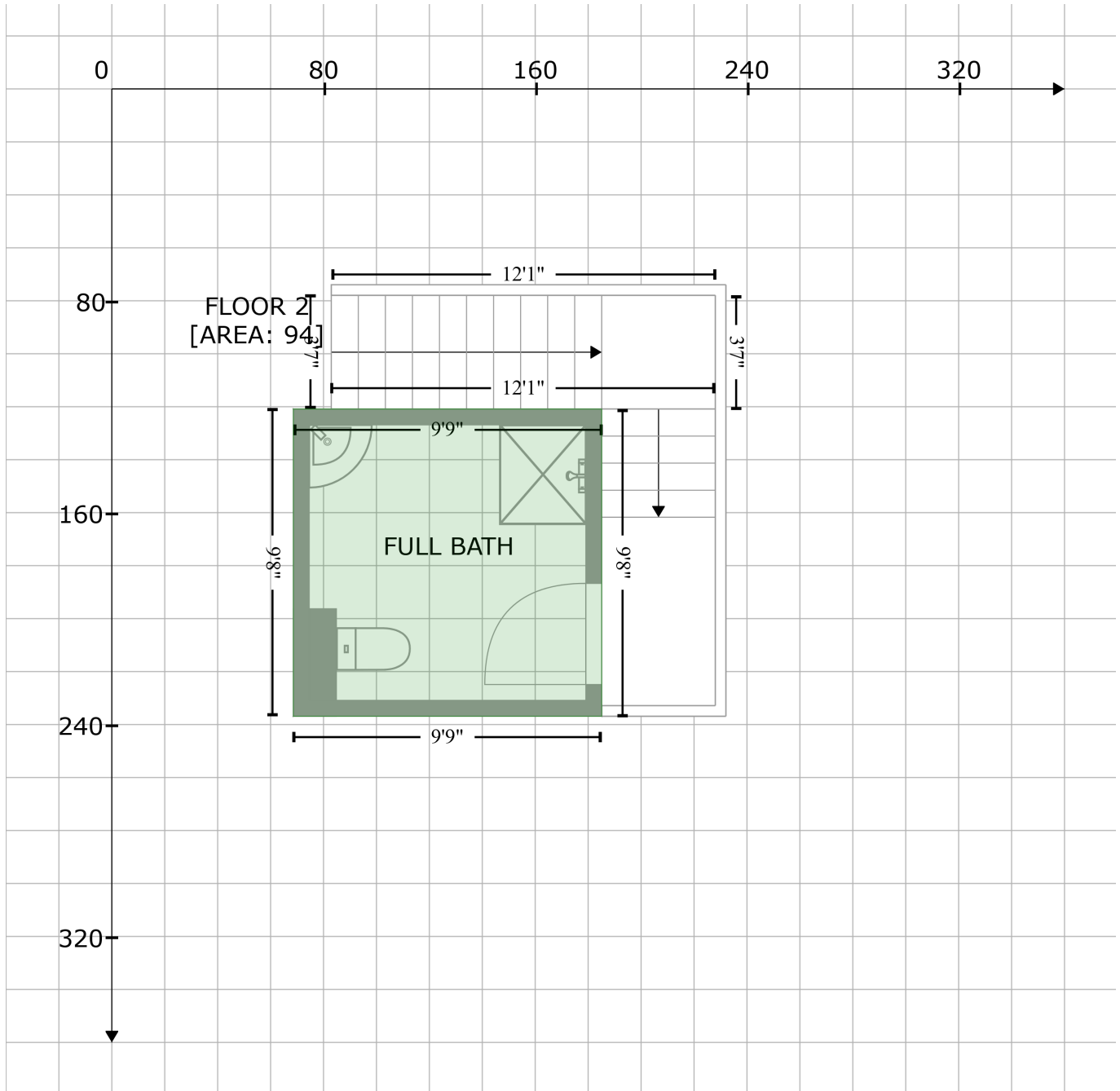
435 115th Avenue, Isle of Palms, Treasure Island, Pinellas County, Florida, United States, 33706

Gross Living Area: 3491 sq. ft

Space	Area (sq. ft)	Calculation <small>Coordinate Polygon Area Algorithm using inches</small>
PATIO (Non-living area)	3853	$\begin{aligned} & -((294.8 + 357.6) * (73.7 - 83) + (357.6 + 315.5) * (83 - 370.8) + (315.5 + 929.4) * (370.8 - 370.8) \\ & + (929.4 + 986.6) * (370.8 - 487.5) + (986.6 + 1140.8) * (487.5 - 407) + (1140.8 + 1404.6) * (407 - \\ & 878.5) + (1404.6 + 1404.6) * (878.5 - 1036.9) + (1404.6 + 1328.1) * (1036.9 - 1036.9) + (1328.1 \\ & + 1328.1) * (1036.9 - 1030.9) + (1328.1 + 1285.1) * (1030.9 - 1030.9) + (1285.1 + 1285.1) * \\ & (1030.9 - 877.9) + (1285.1 + 1328.1) * (877.9 - 877.9) + (1328.1 + 1328.1) * (877.9 - 871.9) + \\ & (1328.1 + 1279.1) * (871.9 - 871.9) + (1279.1 + 1279.1) * (871.9 - 920.9) + (1279.1 + 1168.6) * \\ & (920.9 - 920.9) + (1168.6 + 1168.6) * (920.9 - 1032.9) + (1168.6 + 528) * (1032.9 - 1032.9) + \\ & (528 + 528) * (1032.9 - 609) + (528 + 79.3) * (609 - 609) + (79.3 + 79.3) * (609 - 424.1) + (79.3 + \\ & 237) * (424.1 - 424.1) + (237 + 294.8) * (424.1 - 73.7) * 0.5 * 0.00694 + -((885.5 + 793.6) * \\ & (422.2 - 422.2) + (793.6 + 793.6) * (422.2 - 779.4) + (793.6 + 917.4) * (779.4 - 779.4) + (917.4 + \\ & 917.4) * (779.4 - 726) + (917.4 + 921.4) * (726 - 726) + (921.4 + 958.5) * (726 - 718.7) + (958.5 + \\ & 975) * (718.7 - 702.6) + (975 + 980.6) * (702.6 - 681.8) + (980.6 + 977.5) * (681.8 - 664.3) + \\ & (977.5 + 968) * (664.3 - 650.3) + (968 + 950.2) * (650.3 - 637.8) + (950.2 + 901.5) * (637.8 - \\ & 637.8) + (901.5 + 901.5) * (637.8 - 571.2) + (901.5 + 885.5) * (571.2 - 571.2) + (885.5 + 885.5) * \\ & (571.2 - 422.2) * 0.5 * 0.00694 \end{aligned}$

435 115th Avenue, Isle of Palms, Treasure Island, Pinellas County, Florida, United States, 33706

Gross Living Area: 3491 sq. ft



Space	Area (sq. ft)	Calculation <small>Coordinate Polygon Area Algorithm using inches</small>
FLOOR 2 (Living area)	94	$-((185.1 + 185.1) * (120.9 - 236.9) + (185.1 + 68.6) * (236.9 - 236.9) + (68.6 + 68.6) * (236.9 - 120.9) + (68.6 + 185.1) * (120.9 - 120.9)) * 0.5 * 0.00694$

435 115th Avenue, Isle of Palms, Treasure Island, Pinellas County, Florida, United States, 33706

Gross Living Area: 3491 sq. ft



Space	Area (sq. ft)	Calculation
FLOOR 3 (Living area)	1666	Coordinate Polygon Area Algorithm using inches $-((608 + 608) * (222.1 - 523.8) + (608 + 639.5) * (523.8 - 523.8) + (639.5 + 639.5) * (523.8 - 602.1) + (639.5 + 608) * (602.1 - 602.1) + (608 + 608) * (602.1 - 756.6) + (608 + 520.6) * (756.6 - 756.6) + (520.6 + 520.6) * (756.6 - 809.8) + (520.6 + 357.4) * (809.8 - 809.8) + (357.4 + 357.4) * (809.8 - 756.6) + (357.4 + 261.4) * (756.6 - 756.6) + (261.4 + 261.4) * (756.6 - 645.9) + (261.4 + 76.8) * (645.9 - 645.9) + (76.8 + 76.8) * (645.9 - 481.2) + (76.8 + 159.3) * (481.2 - 481.2) + (159.3 + 159.3) * (481.2 - 289) + (159.3 + 358) * (289 - 289) + (358 + 358) * (289 - 222.1) + (358 + 608) * (222.1 - 222.1)) * 0.5 + 0.00694$

435 115th Avenue, Isle of Palms, Treasure Island, Pinellas County, Florida, United States, 33706

Gross Living Area: 3491 sq. ft

Space	Area (sq. ft)	Calculation <small>Coordinate Polygon Area Algorithm using inches</small>
BALCONY (Non-living area)	134	$-\left((261.4 + 261.4) * (645.9 - 752.6) + (261.4 + 80.8) * (752.6 - 752.6) + (80.8 + 80.8) * (752.6 - 645.9) + (80.8 + 261.4) * (645.9 - 645.9)\right) * 0.5 * 0.00694$
BALCONY (Non-living area)	496	$-\left((604 + 604) * (70.6 - 222.1) + (604 + 358) * (222.1 - 222.1) + (358 + 358) * (222.1 - 289) + (358 + 120.2) * (289 - 289) + (120.2 + 161.3) * (289 - 153.3) + (161.3 + 161.3) * (153.3 - 108.1) + (161.3 + 326.7) * (108.1 - 108.1) + (326.7 + 326.7) * (108.1 - 153.3) + (326.7 + 208.6) * (153.3 - 153.6) + (208.6 + 185.5) * (153.6 - 229.6) + (185.5 + 189.4) * (229.6 - 230.7) + (189.4 + 208.4) * (230.7 - 167.9) + (208.4 + 362) * (167.9 - 167.9) + (362 + 362) * (167.9 - 70.6) + (362 + 604) * (70.6 - 70.6)\right) * 0.5 * 0.00694$

435 115th Avenue, Isle of Palms, Treasure Island, Pinellas County, Florida, United States, 33706

Gross Living Area: 3491 sq. ft



Space	Area (sq. ft)	Calculation
FLOOR 4 (Living area)	1153	Coordinate Polygon Area Algorithm using inches $ \begin{aligned} & -((364 + 364) * (149 - 301.7) + (364 + 414.8) * (301.7 - 301.7) + (414.8 + 414.8) * (301.7 - 248.8) \\ & + (414.8 + 548.5) * (248.8 - 248.8) + (548.5 + 548.5) * (248.8 - 301.7) + (548.5 + 608) * (301.7 - \\ & 301.7) + (608 + 608) * (301.7 - 383.8) + (608 + 639.5) * (383.8 - 383.8) + (639.5 + 639.5) * \\ & (383.8 - 462.1) + (639.5 + 608) * (462.1 - 462.1) + (608 + 608) * (462.1 - 616.6) + (608 + 514.6) * \\ & (616.6 - 616.6) + (514.6 + 514.6) * (616.6 - 586.1) + (514.6 + 358) * (586.1 - 586.1) + (358 + 358) \\ & * (586.1 - 505.9) + (358 + 76.8) * (505.9 - 505.9) + (76.8 + 76.8) * (505.9 - 341.2) + (76.8 + 174) * \\ & (341.2 - 341.2) + (174 + 174) * (341.2 - 149) + (174 + 364) * (149 - 149)) * 0.5 * 0.00694 \end{aligned} $

435 115th Avenue, Isle of Palms, Treasure Island, Pinellas County, Florida, United States,
33706

Gross Living Area: 3491 sq. ft

Space	Area (sq. ft)	Calculation <small>Coordinate Polygon Area Algorithm using inches</small>
OPEN TO BELOW (Non-living area)	155	$-\left((548.5 + 548.5) * (82.1 - 248.8) + (548.5 + 414.8) * (248.8 - 248.8) + (414.8 + 414.8) * (248.8 - 82.1) + (414.8 + 548.5) * (82.1 - 82.1)\right) * 0.5 * 0.00694$
BALCONY (Non-living area)	148	$-\left((358 + 358) * (505.9 - 586.1) + (358 + 514.6) * (586.1 - 586.1) + (514.6 + 514.6) * (586.1 - 663.8) + (514.6 + 363.4) * (663.8 - 663.8) + (363.4 + 363.4) * (663.8 - 610.6) + (363.4 + 267.4) * (610.6 - 610.6) + (267.4 + 267.4) * (610.6 - 505.9) + (267.4 + 358) * (505.9 - 505.9)\right) * 0.5 * 0.00694$
BALCONY (Non-living area)	90	$-\left((360 + 360) * (73.1 - 149) + (360 + 178.3) * (149 - 149) + (178.3 + 201.1) * (149 - 73.1) + (201.1 + 360) * (73.1 - 73.1)\right) * 0.5 * 0.00694$

