

Home report

3249 Landon Street,Lynchburg,Virginia,United States



Total Area: 1915 sq. ft

Below Ground: 0 sq. ft, Floor 2: 1394 sq. ft, Floor 3: 521 sq. ft

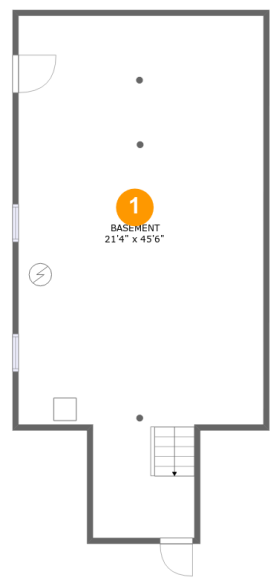
Excluded: Basement 850 sq. ft, Porch 257 sq. ft, Fireplace 12 sq. ft, Attic 552 sq. ft, Low ceiling 36 sq. ft, Walls: 265 sq. ft

Property summary

 **3** Floors

 **3** Bedrooms

 **2** Bathrooms



Room dimensions

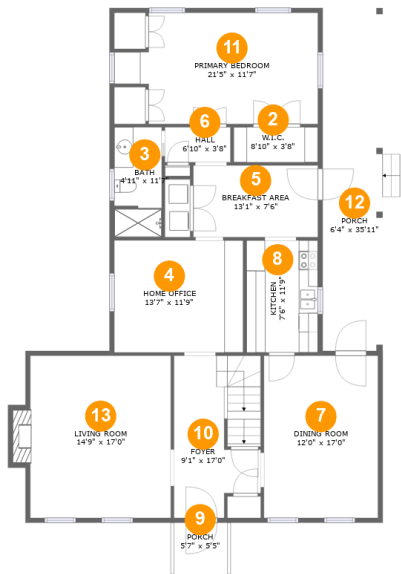
Floor 1 Below ground

Total:0sqft Excluded: 850sqft

#		Max Dimensions	sqft	Included
1	Basement	21'4" x 45'6"	850 sq. ft	No

Home report

3249 Landon Street,Lynchburg,Virginia,United States



Room dimensions

Floor 2 Total:1394sqft Excluded: 269sqft

#		Max Dimensions	sqft	Included
2	W.I.C.	8'10" x 3'8"	33 sq. ft	Yes
3	Bath	4'11" x 11'7"	57 sq. ft	Yes
4	Home Office	13'7" x 11'9"	159 sq. ft	Yes
5	Breakfast Area	13'1" x 7'6"	98 sq. ft	Yes
6	Hall	6'10" x 3'8"	25 sq. ft	Yes
7	Dining Room	12'0" x 17'0"	204 sq. ft	Yes
8	Kitchen	7'6" x 11'9"	88 sq. ft	Yes
9	Porch	5'7" x 5'5"	30 sq. ft	No
10	Foyer	9'1" x 17'0"	143 sq. ft	Yes
11	Primary Bedroom	21'5" x 11'7"	220 sq. ft	Yes
12	Porch	6'4" x 35'11"	227 sq. ft	No

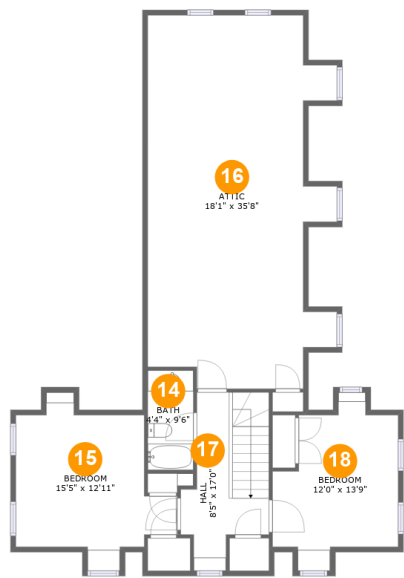
Home report

3249 Landon Street,Lynchburg,Virginia,United States

#		Max Dimensions	sqft	Included
13	Living Room	14'9" x 17'0"	262 sq. ft	Yes

Home report

3249 Landon Street,Lynchburg,Virginia,United States

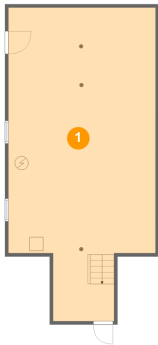


Room dimensions

Floor 3 Total:521sqft Excluded: 588sqft

#		Max Dimensions	sqft	Included
14	Bath	4'4" x 9'6"	41 sq. ft	Yes
15	Bedroom	15'5" x 12'11"	170 sq. ft	Yes
16	Attic	18'1" x 35'8"	552 sq. ft	No
17	Hall	8'5" x 17'0"	111 sq. ft	Yes
18	Bedroom	12'0" x 13'9"	143 sq. ft	Yes

1 Floor 1 - Basement



Max Dimensions: 21'4" x 45'6"
Calculated Area: 850 sq. ft
Included: No

Heated: Yes
Finished: No
Enclosed: Yes
Contiguous: Yes
Permitted: Yes
Wet space: No
Addition: No
Conversion: No

2 Floor 2 - W.I.C.



Max Dimensions: 8'10" x 3'8"
Calculated Area: 33 sq. ft
Included: Yes

Heated: Yes
Finished: Yes
Enclosed: Yes
Contiguous: Yes
Permitted: Yes
Wet space: No
Addition: No
Conversion: No

3 Floor 2 - Bath



Max Dimensions: 4'11" x 11'7"
Calculated Area: 57 sq. ft
Included: Yes

Heated: Yes
Finished: Yes
Enclosed: Yes
Contiguous: Yes
Permitted: Yes
Wet space: Yes
Addition: No
Conversion: No

4 Floor 2 - Home Office



Max Dimensions: 13'7" x 11'9"
Calculated Area: 159 sq. ft
Included: Yes

Heated: Yes
Finished: Yes
Enclosed: Yes
Contiguous: Yes
Permitted: Yes
Wet space: No
Addition: No
Conversion: No

5 Floor 2 - Breakfast Area



Max Dimensions: 13'1" x 7'6"
Calculated Area: 98 sq. ft
Included: Yes

Heated: Yes
Finished: Yes
Enclosed: Yes
Contiguous: Yes
Permitted: Yes
Wet space: No
Addition: No
Conversion: No

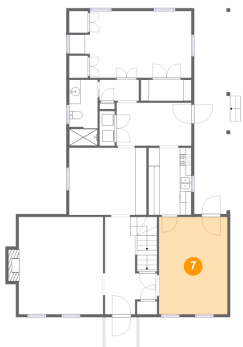
6 Floor 2 - Hall



Max Dimensions: 6'10" x 3'8"
Calculated Area: 25 sq. ft
Included: Yes

Heated: Yes
Finished: Yes
Enclosed: Yes
Contiguous: Yes
Permitted: Yes
Wet space: No
Addition: No
Conversion: No

7 Floor 2 - Dining Room



Max Dimensions: 12'0" x 17'0"
Calculated Area: 204 sq. ft
Included: Yes

Heated: Yes
Finished: Yes
Enclosed: Yes
Contiguous: Yes
Permitted: Yes
Wet space: No
Addition: No
Conversion: No

8 Floor 2 - Kitchen



Max Dimensions: 7'6" x 11'9"
Calculated Area: 88 sq. ft
Included: Yes

Heated: Yes
Finished: Yes
Enclosed: Yes
Contiguous: Yes
Permitted: Yes
Wet space: No
Addition: No
Conversion: No

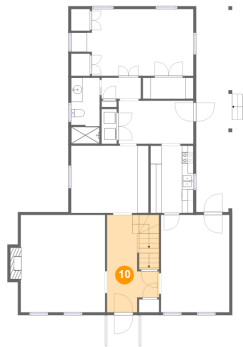
9 Floor 2 - Porch



Max Dimensions: 5'7" x 5'5"
Calculated Area: 30 sq. ft
Included: No

Heated: No
Finished: Yes
Enclosed: No
Contiguous: Yes
Permitted: Yes
Wet space: No
Addition: No
Conversion: No

10 Floor 2 - Foyer



Max Dimensions: 9'1" x 17'0"
Calculated Area: 143 sq. ft
Included: Yes

Heated: Yes
Finished: Yes
Enclosed: Yes
Contiguous: Yes
Permitted: Yes
Wet space: No
Addition: No
Conversion: No

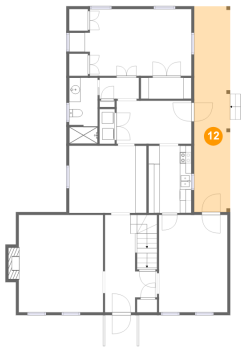
11 Floor 2 - Primary Bedroom



Max Dimensions: 21'5" x 11'7"
Calculated Area: 220 sq. ft
Included: Yes

Heated: Yes
Finished: Yes
Enclosed: Yes
Contiguous: Yes
Permitted: Yes
Wet space: No
Addition: No
Conversion: No

12 Floor 2 - Porch



Max Dimensions: 6'4" x 35'11"
Calculated Area: 227 sq. ft
Included: No

Heated: No
Finished: Yes
Enclosed: No
Contiguous: Yes
Permitted: Yes
Wet space: No
Addition: No
Conversion: No

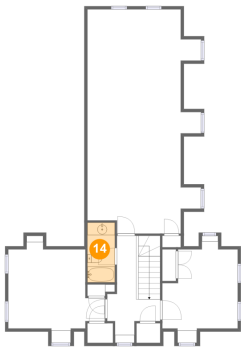
13 Floor 2 - Living Room



Max Dimensions: 14'9" x 17'0"
Calculated Area: 262 sq. ft
Included: Yes

Heated: Yes
Finished: Yes
Enclosed: Yes
Contiguous: Yes
Permitted: Yes
Wet space: No
Addition: No
Conversion: No

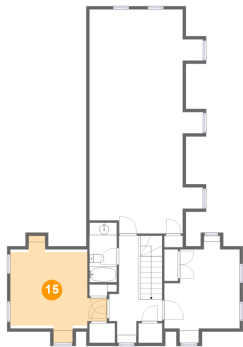
14 Floor 3 - Bath



Max Dimensions: 4'4" x 9'6"
Calculated Area: 41 sq. ft
Included: Yes

Heated: Yes
Finished: Yes
Enclosed: Yes
Contiguous: Yes
Permitted: Yes
Wet space: Yes
Addition: No
Conversion: No

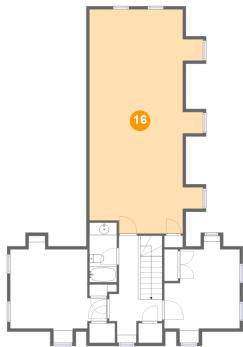
15 Floor 3 - Bedroom



Max Dimensions: 15'5" x 12'11"
Calculated Area: 170 sq. ft
Included: Yes

Heated: Yes
Finished: Yes
Enclosed: Yes
Contiguous: Yes
Permitted: Yes
Wet space: No
Addition: No
Conversion: No

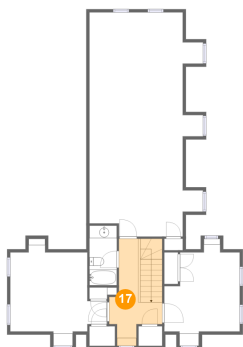
16 Floor 3 - Attic



Max Dimensions: 18'1" x 35'8"
Calculated Area: 552 sq. ft
Included: No

Heated: No
Finished: No
Enclosed: Yes
Contiguous: Yes
Permitted: Yes
Wet space: No
Addition: No
Conversion: No

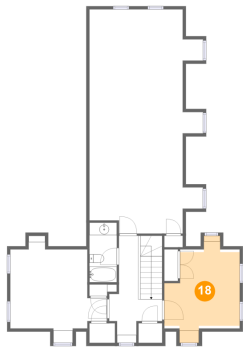
17 Floor 3 - Hall



Max Dimensions: 8'5" x 17'0"
Calculated Area: 111 sq. ft
Included: Yes

Heated: Yes
Finished: Yes
Enclosed: Yes
Contiguous: Yes
Permitted: Yes
Wet space: No
Addition: No
Conversion: No

18 Floor 3 - Bedroom



Max Dimensions: 12'0" x 13'9"
Calculated Area: 143 sq. ft
Included: Yes

Heated: Yes
Finished: Yes
Enclosed: Yes
Contiguous: Yes
Permitted: Yes
Wet space: No
Addition: No
Conversion: No