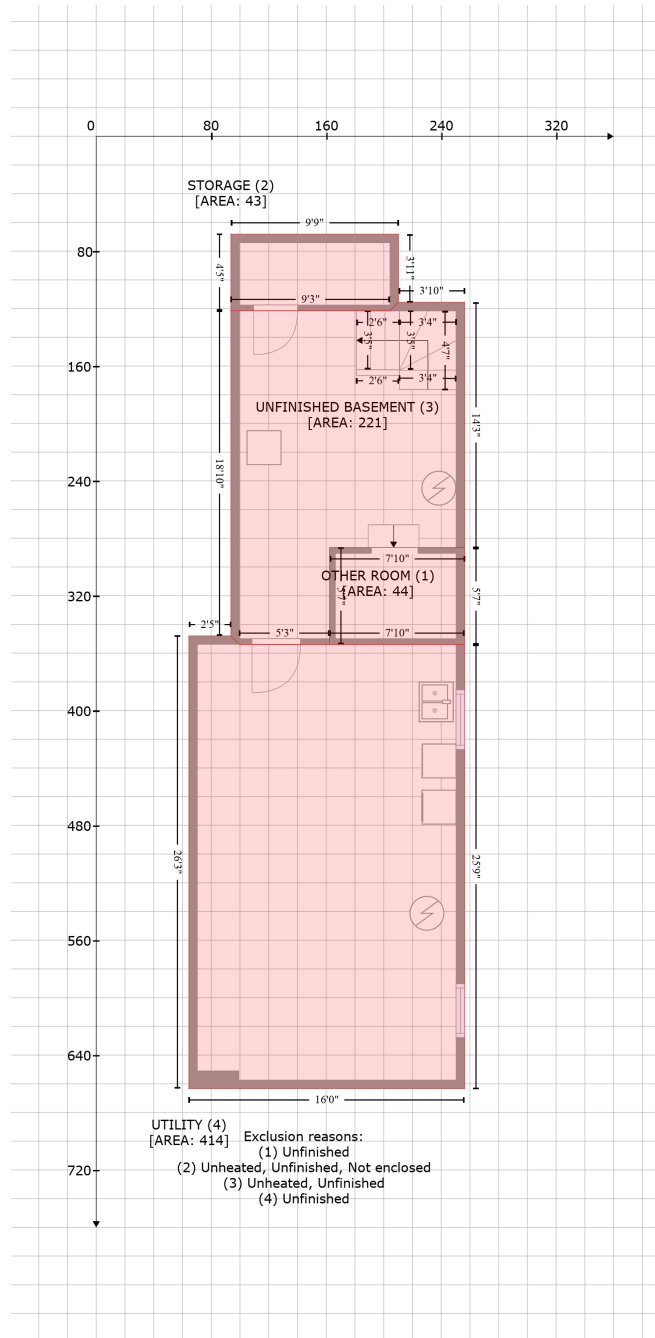


# 511 South Highland Street, Kenwood, Champaign, Champaign County, Illinois, United States, 61821

Gross Living Area: 1996 sq. ft



| Space                           | Area (sq. ft) | Calculation  |
|---------------------------------|---------------|--|
| OTHER ROOM<br>(Non-living area) | 44            | $-\left((256.4 + 256.4) * (286.5 - 353.9) + (256.4 + 162.4) * (353.9 - 353.9) + (162.4 + 162.4) * (353.9 - 286.5) + (162.4 + 256.4) * (286.5 - 286.5)\right) * 0.5 * 0.00694$  |
| STORAGE<br>(Non-living area)    | 43            | $-\left((210.3 + 210.3) * (68.1 - 115.5) + (210.3 + 204.3) * (115.5 - 121.5) + (204.3 + 93.7) * (121.5 - 121.5) + (93.7 + 93.7) * (121.5 - 68.1) + (93.7 + 210.3) * (68.1 - 68.1)\right) * 0.5 * 0.00694$  |
| UNFINISHED<br>BASEMENT          | 221           | $-\left((256.4 + 256.4) * (115.5 - 286.5) + (256.4 + 162.4) * (286.5 - 286.5) + (162.4 + 162.4) * (286.5 - 353.9) + (162.4 + 99.7) * (353.9 - 353.9) + (99.7 + 93.7) * (353.9 - 347.9) + (93.7 + 93.7) * (347.9 - 347.9)\right) * 0.5 * 0.00694$ |

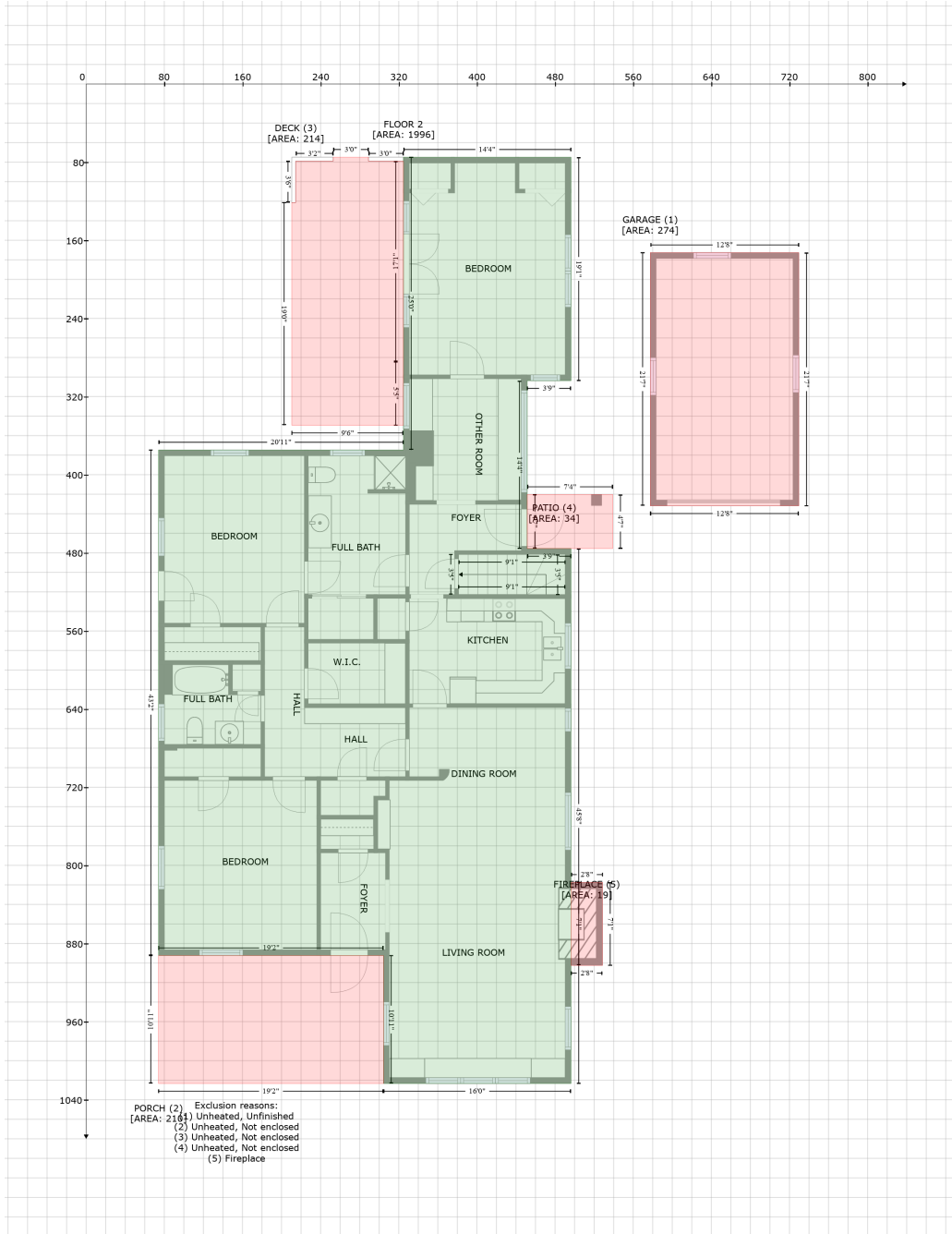
# 511 South Highland Street, Kenwood, Champaign, Champaign County, Illinois, United States, 61821

Gross Living Area: 1996 sq. ft

| Space                        | Area (sq. ft) | Calculation <small>Coordinate Polygon Area Algorithm using inches</small>  |
|------------------------------|---------------|--|
| (Non-living area)            |               | $-121.5 + (93.7 + 204.3) * (121.5 - 121.5) + (204.3 + 210.3) * (121.5 - 115.5) + (210.3 + 256.4) * (115.5 - 115.5) * 0.5 * 0.00694$  |
| UTILITY<br>(Non-living area) | 414           | $-((93.7 + 99.7) * (347.9 - 353.9) + (99.7 + 256.4) * (353.9 - 353.9) + (256.4 + 256.4) * (353.9 - 663.4) + (256.4 + 64.4) * (663.4 - 663.4) + (64.4 + 64.4) * (663.4 - 347.9) + (64.4 + 93.7) * (347.9 - 347.9)) * 0.5 * 0.00694$ |

# 511 South Highland Street, Kenwood, Champaign, Champaign County, Illinois, United States, 61821

Gross Living Area: 1996 sq. ft



| Space                    | Area (sq. ft) | Calculation   |
|--------------------------|---------------|---|
| FLOOR 2<br>(Living area) | 1996          | Coordinate Polygon Area Algorithm using inches<br>$-\left((496.4 + 496.4) * (74.9 - 303.8) + (496.4 + 451.5) * (303.8 - 303.8) + (451.5 + 451.5) * (303.8 - 475.6) + (451.5 + 496.4) * (475.6 - 475.6) + (496.4 + 496.4) * (475.6 - 1023.4) + (496.4 + 304.4) * (1023.4 - 1023.4) + (304.4 + 304.4) * (1023.4 - 892.4) + (304.4 + 74.1) * (892.4 - 892.4) + (74.1 + 74.1) * (892.4 - 374.7) + (74.1 + 324.8) * (374.7 - 374.7) + (324.8 + 324.8) * (374.7 - 74.9) + (324.8 + 496.4) * (74.9 - 74.9)\right) * 0.5 * 0.00694$ |
| GARAGE                   | 274           | $-\left((729.6 + 729.6) * (172.6 - 431.9) + (729.6 + 577.5) * (431.9 - 431.9) + (577.5 + 577.5) * (431.9 - \right.$   |

# 511 South Highland Street, Kenwood, Champaign, Champaign County, Illinois, United States, 61821

Gross Living Area: 1996 sq. ft

| Space                          | Area (sq. ft) | Calculation <small>Coordinate Polygon Area Algorithm using inches</small>  |
|--------------------------------|---------------|--|
| (Non-living area)              |               | $172.6 + (577.5 + 729.6) * (172.6 - 172.6)) * 0.5 * 0.00694$   |
| PORCH<br>(Non-living area)     | 210           | $-((304.4 + 304.4) * (892.4 - 1023.4) + (304.4 + 74) * (1023.4 - 1023.4) + (74 + 74.1) * (1023.4 - 892.4) + (74.1 + 304.4) * (892.4 - 892.4)) * 0.5 * 0.00694$   |
| DECK<br>(Non-living area)      | 214           | $-((289 + 289) * (74.9 - 78.9) + (289 + 324.8) * (78.9 - 78.9) + (324.8 + 324.8) * (78.9 - 284) + (324.8 + 324.8) * (284 - 349.4) + (324.8 + 210.5) * (349.4 - 349.4) + (210.5 + 210.5) * (349.4 - 121.4) + (210.5 + 214.5) * (121.4 - 121.4) + (214.5 + 214.5) * (121.4 - 78.9) + (214.5 + 252.9) * (78.9 - 78.9) + (252.9 + 252.9) * (78.9 - 74.9) + (252.9 + 289) * (74.9 - 74.9)) * 0.5 * 0.00694$ |
| PATIO<br>(Non-living area)     | 34            | $-((539.1 + 539.1) * (420.3 - 475.6) + (539.1 + 451.5) * (475.6 - 475.6) + (451.5 + 451.5) * (475.6 - 420.3) + (451.5 + 539.1) * (420.3 - 420.3)) * 0.5 * 0.00694$   |
| FIREPLACE<br>(Non-living area) | 19            | $-((528.6 + 528.6) * (817.4 - 902.4) + (528.6 + 496.4) * (902.4 - 902.4) + (496.4 + 496.4) * (902.4 - 817.4) + (496.4 + 528.6) * (817.4 - 817.4)) * 0.5 * 0.00694$   |