

GARAGE
21'6" X 18'7"

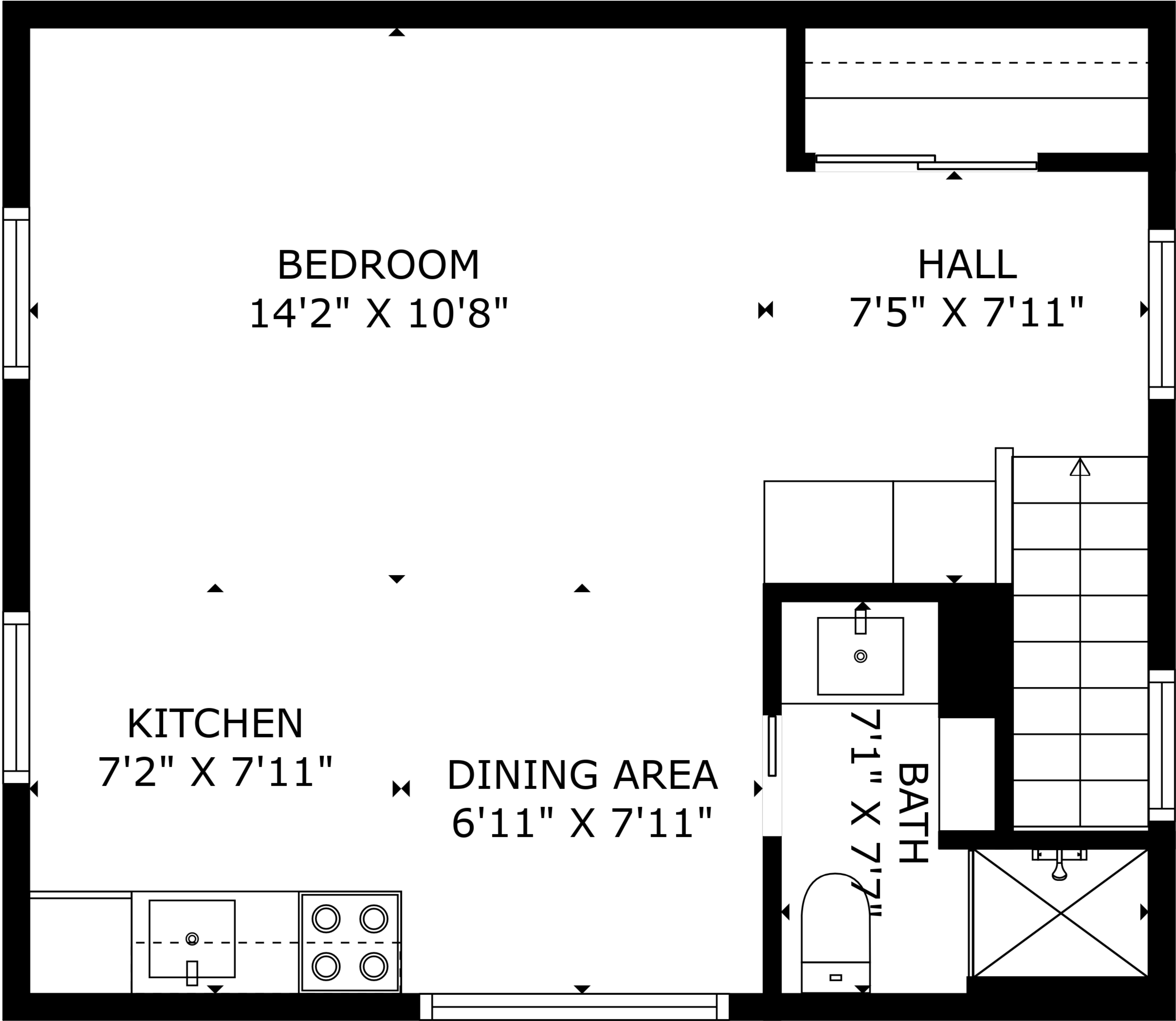
ENTRY
3'8" X 3'2"

PORCH
5'8" X 4'11"

TOTAL: 422 sq. ft
FIRST FLOOR: 22 sq. ft, SECOND FLOOR: 400 sq. ft
EXCLUDED AREAS: GARAGE: 373 sq. ft, PORCH: 28 sq. ft

Ihp | Measurements Are Deemed Highly Reliable But Not Guaranteed

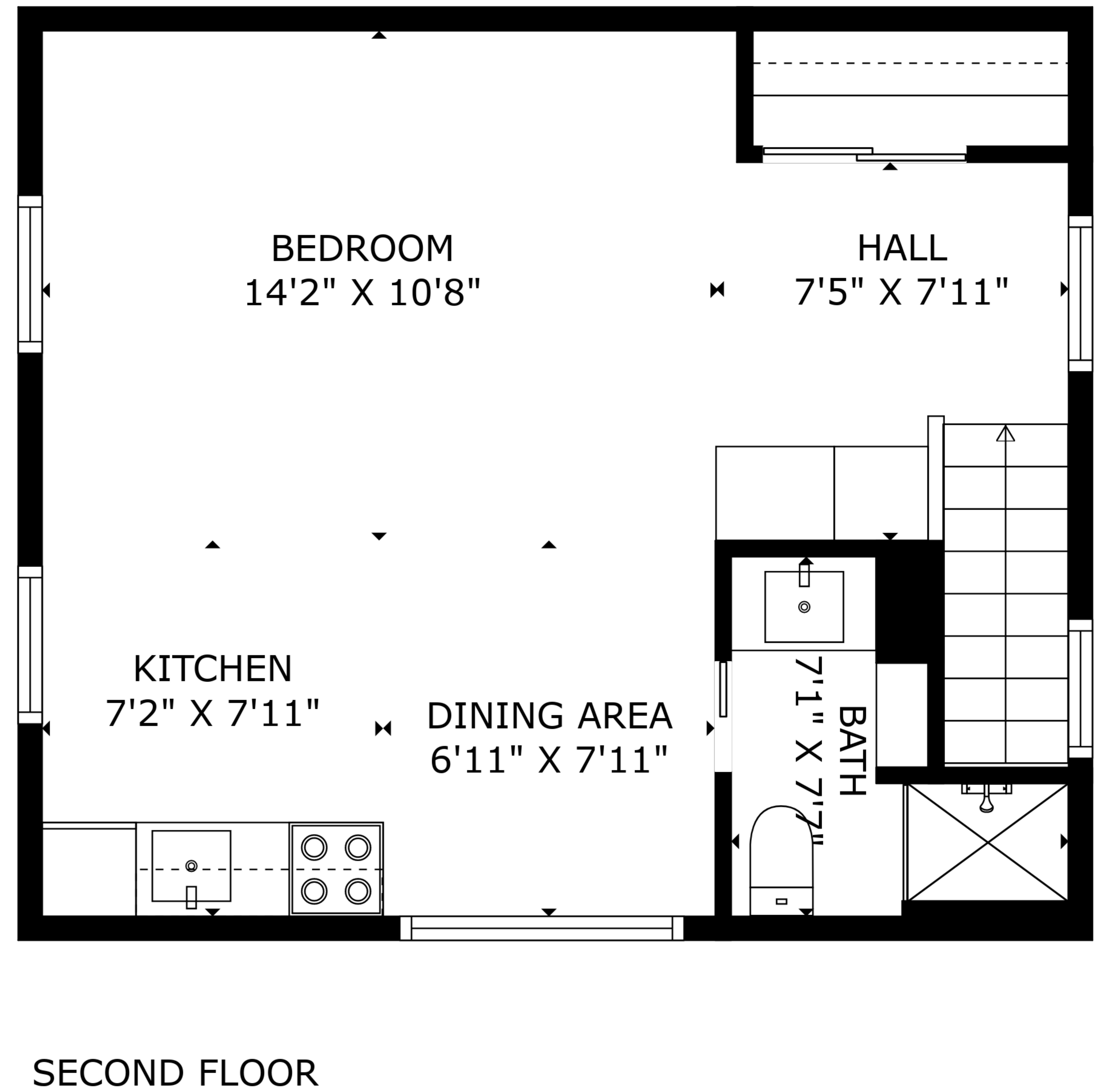
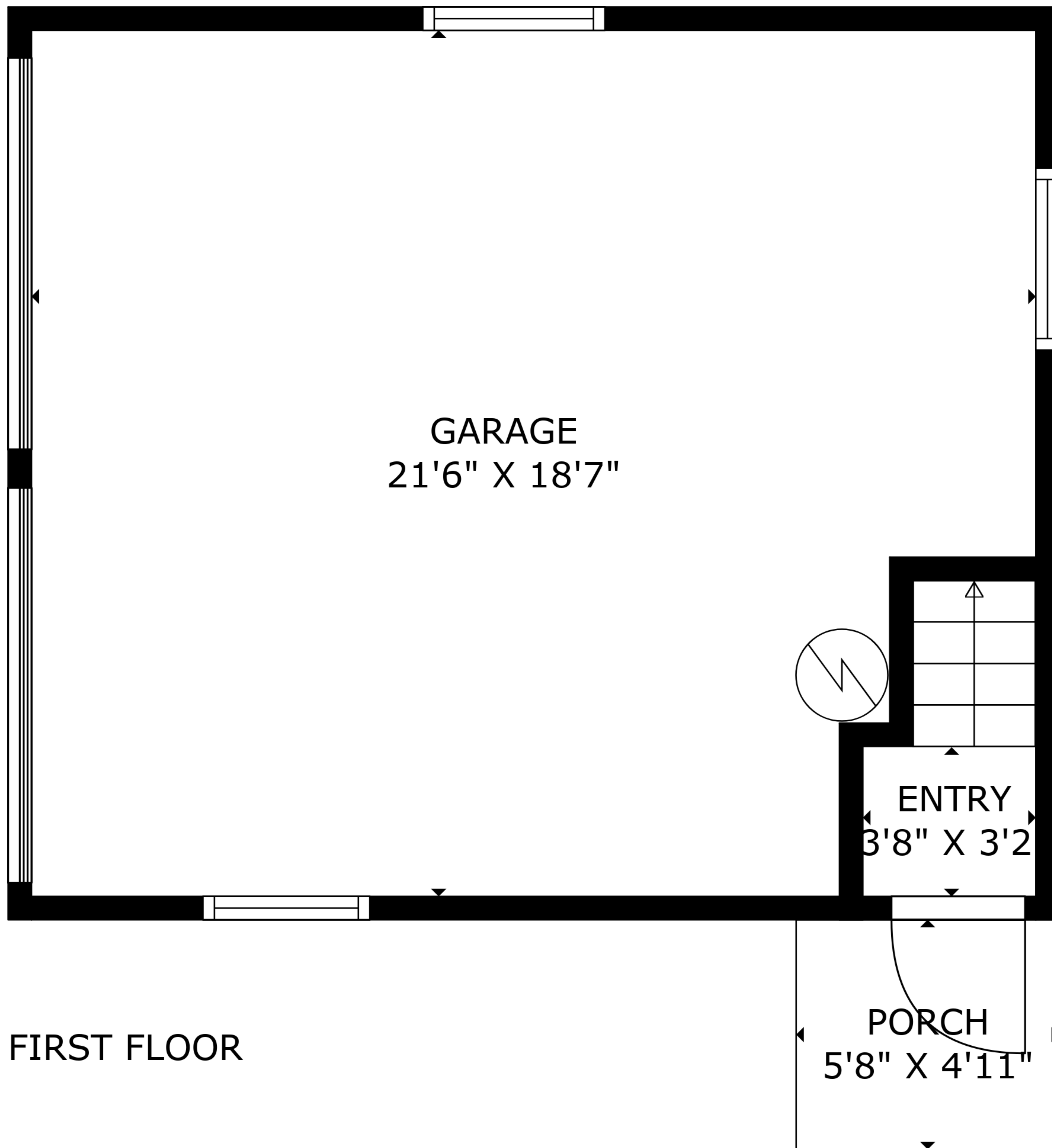
431 RIDGEWOOD AVENUE, GLEN RIDGE - CARRIAGE HOUSE



TOTAL: 422 sq. ft
FIRST FLOOR: 22 sq. ft, SECOND FLOOR: 400 sq. ft
EXCLUDED AREAS: GARAGE: 373 sq. ft, PORCH: 28 sq. ft

Ihp | Measurements Are Deemed Highly Reliable But Not Guaranteed

431 RIDGEWOOD AVENUE, GLEN RIDGE - CARRIAGE HOUSE



TOTAL: 422 sq. ft
FIRST FLOOR: 22 sq. ft, SECOND FLOOR: 400 sq. ft
EXCLUDED AREAS: GARAGE: 373 sq. ft, PORCH: 28 sq. ft