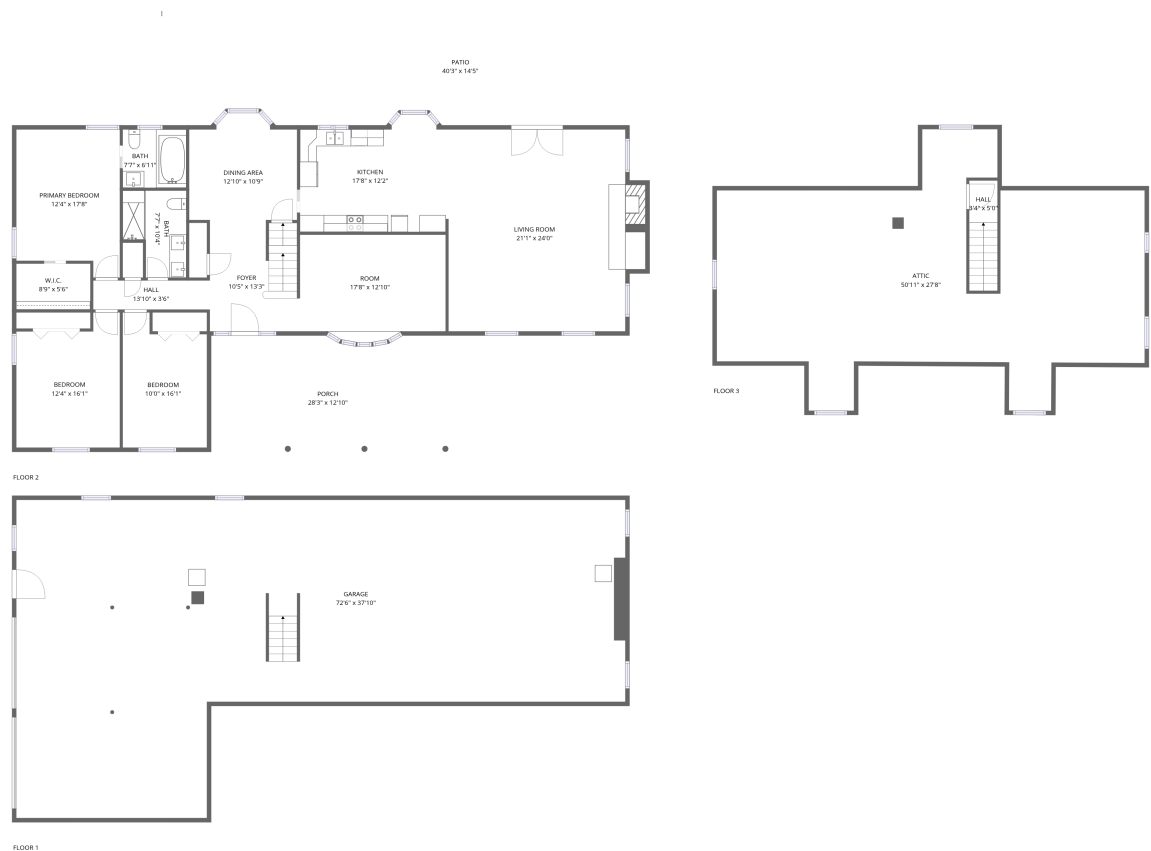


Home data report

5353 PA-309,Schnecksville,PA,US



Total Area: 2144 sq. ft


Floor 1: 0 sq. ft, Floor 2: 2089 sq. ft, Floor 3: 55 sq. ft

Excluded: Garage 2057 sq. ft, Porch 383 sq. ft, Patio 575 sq. ft, Embedded window 21 sq. ft, Attic 1112 sq. ft, Walls: 317 sq. ft

Property summary

 **3** Floors

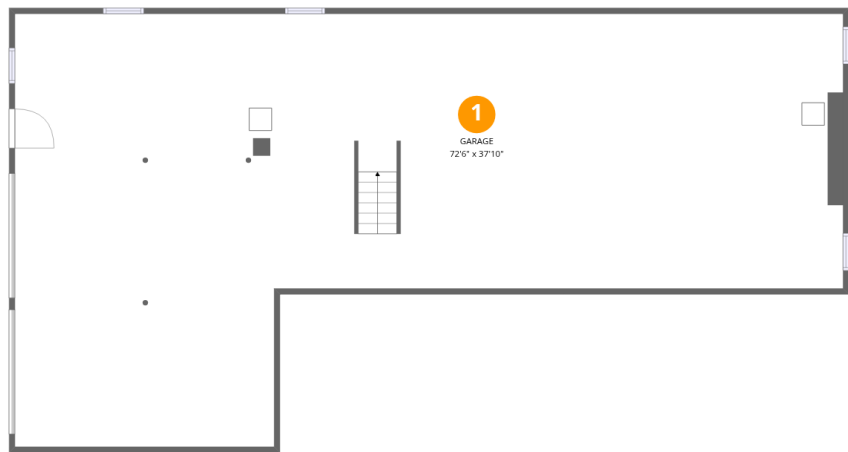
 **3** Bedrooms

 **2** Bathrooms

 **1** Garages

Home data report

5353 PA-309,Schnecksville,PA,US



Room dimensions

Floor 1 Total:0sqft Excluded: 2057sqft

#		Dimensions	sqft	Counted as living area
1	Garage	72'6" x 37'10"	2057 sq. ft	No

Home data report

5353 PA-309,Schnecksville,PA,US



Room dimensions

Floor 2 Total:2089sqft Excluded: 979sqft

#		Dimensions	sqft	Counted as living area
2	Primary Bedroom	12'4" x 17'8"	199 sq. ft	Yes
3	Room	17'8" x 12'10"	209 sq. ft	Yes
4	Bath	7'7" x 6'11"	53 sq. ft	Yes
5	W.I.C.	8'9" x 5'6"	48 sq. ft	Yes
6	Patio	40'3" x 14'5"	584 sq. ft	No
7	Kitchen	17'8" x 12'2"	215 sq. ft	Yes
8	Hall	13'10" x 3'6"	48 sq. ft	Yes
9	Living Room	21'1" x 24'0"	530 sq. ft	Yes
10	Dining Area	12'10" x 10'9"	139 sq. ft	Yes
11	Porch	28'3" x 12'10"	383 sq. ft	No
12	Bedroom	10'0" x 16'1"	144 sq. ft	Yes

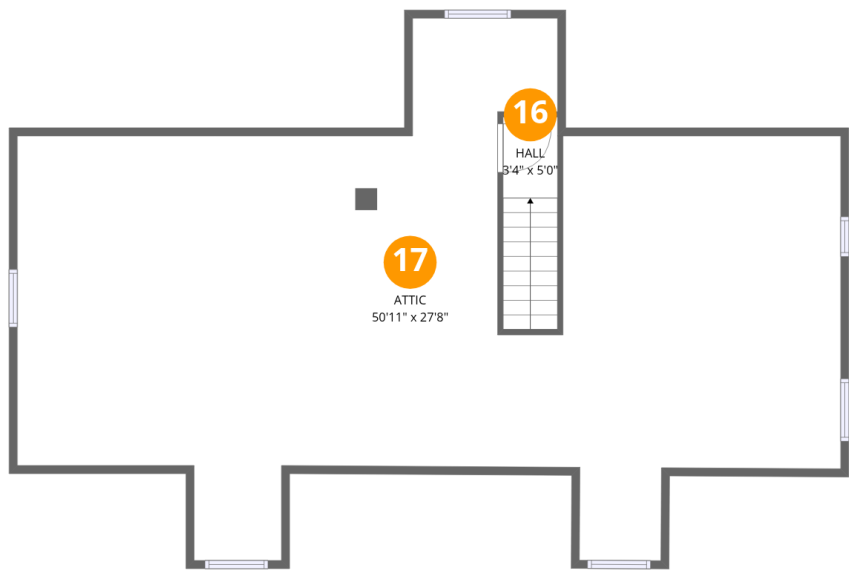
Home data report

5353 PA-309,Schnecksville,PA,US

#		Dimensions	sqft	Counted as living area
13	Bath	7'7" x 10'4"	66 sq. ft	Yes
14	Bedroom	12'4" x 16'1"	178 sq. ft	Yes
15	Foyer	10'5" x 13'3"	135 sq. ft	Yes

Home data report

5353 PA-309,Schnecksville,PA,US

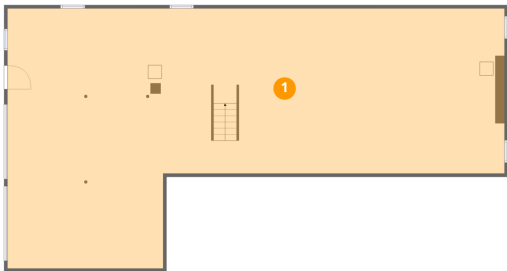


Room dimensions

Floor 3 Total:55sqft Excluded: 1112sqft

#		Dimensions	sqft	Counted as living area
16	Hall	3'4" x 5'0"	44 sq. ft	Yes
17	Attic	50'11" x 27'8"	1112 sq. ft	No

1 Floor 1 - Garage



Dimensions: 72'6" x 37'10"
Area: 2057 sq. ft
Counted as living area: No

Heated: No
Finished: No
Enclosed: Yes
Contiguous: Yes
Permitted: Yes
Wet space: No
Addition: No
Conversion: No

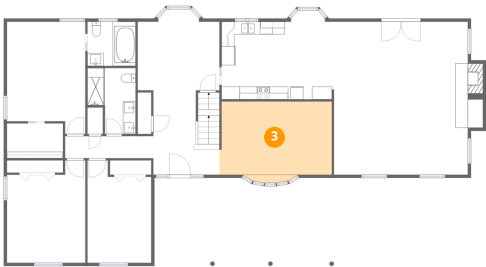
2 Floor 2 - Primary Bedroom



Dimensions: 12'4" x 17'8"
Area: 199 sq. ft
Counted as living area: Yes

Heated: Yes
Finished: Yes
Enclosed: Yes
Contiguous: Yes
Permitted: Yes
Wet space: No
Addition: No
Conversion: No

3 Floor 2 - Room



Dimensions: 17'8" x 12'10"
Area: 209 sq. ft
Counted as living area: Yes

Heated: Yes
Finished: Yes
Enclosed: Yes
Contiguous: Yes
Permitted: Yes
Wet space: No
Addition: No
Conversion: No

4 Floor 2 - Bath



Dimensions: 7'7" x 6'11"
Area: 53 sq. ft
Counted as living area: Yes

Heated: Yes
Finished: Yes
Enclosed: Yes
Contiguous: Yes
Permitted: Yes
Wet space: Yes
Addition: No
Conversion: No

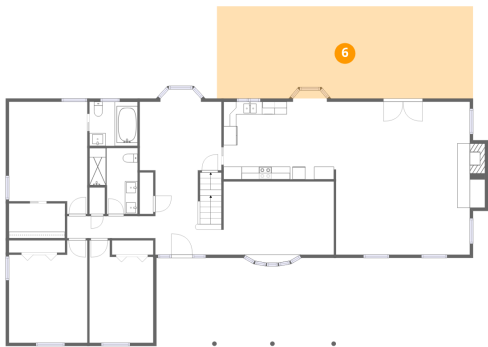
5 Floor 2 - W.I.C.



Dimensions: 8'9" x 5'6"
Area: 48 sq. ft
Counted as living area: Yes

Heated: Yes
Finished: Yes
Enclosed: Yes
Contiguous: Yes
Permitted: Yes
Wet space: No
Addition: No
Conversion: No

6 Floor 2 - Patio



Dimensions: 40'3" x 14'5"
Area: 584 sq. ft
Counted as living area: No

Heated: No
Finished: No
Enclosed: No
Contiguous: Yes
Permitted: Yes
Wet space: No
Addition: No
Conversion: No

7 Floor 2 - Kitchen



Dimensions: 17'8" x 12'2"
Area: 215 sq. ft
Counted as living area: Yes

Heated: Yes
Finished: Yes
Enclosed: Yes
Contiguous: Yes
Permitted: Yes
Wet space: No
Addition: No
Conversion: No

8 Floor 2 - Hall



Dimensions: 13'10" x 3'6"
Area: 48 sq. ft
Counted as living area: Yes

Heated: Yes
Finished: Yes
Enclosed: Yes
Contiguous: Yes
Permitted: Yes
Wet space: No
Addition: No
Conversion: No

9 Floor 2 - Living Room



Dimensions: 21'1" x 24'0"
Area: 530 sq. ft
Counted as living area: Yes

Heated: Yes
Finished: Yes
Enclosed: Yes
Contiguous: Yes
Permitted: Yes
Wet space: No
Addition: No
Conversion: No

10 Floor 2 - Dining Area



Dimensions: 12'10" x 10'9"
Area: 139 sq. ft
Counted as living area: Yes

Heated: Yes
Finished: Yes
Enclosed: Yes
Contiguous: Yes
Permitted: Yes
Wet space: No
Addition: No
Conversion: No

11 Floor 2 - Porch



Dimensions: 28'3" x 12'10"
Area: 383 sq. ft
Counted as living area: No

Heated: No
Finished: No
Enclosed: No
Contiguous: Yes
Permitted: Yes
Wet space: No
Addition: No
Conversion: No

12 Floor 2 - Bedroom



Dimensions: 10'0" x 16'1"
Area: 144 sq. ft
Counted as living area: Yes

Heated: Yes
Finished: Yes
Enclosed: Yes
Contiguous: Yes
Permitted: Yes
Wet space: No
Addition: No
Conversion: No

13 Floor 2 - Bath



Dimensions: 7'7" x 10'4"
Area: 66 sq. ft
Counted as living area: Yes

Heated: Yes
Finished: Yes
Enclosed: Yes
Contiguous: Yes
Permitted: Yes
Wet space: Yes
Addition: No
Conversion: No

14 Floor 2 - Bedroom



Dimensions: 12'4" x 16'1"
Area: 178 sq. ft
Counted as living area: Yes

Heated: Yes
Finished: Yes
Enclosed: Yes
Contiguous: Yes
Permitted: Yes
Wet space: No
Addition: No
Conversion: No

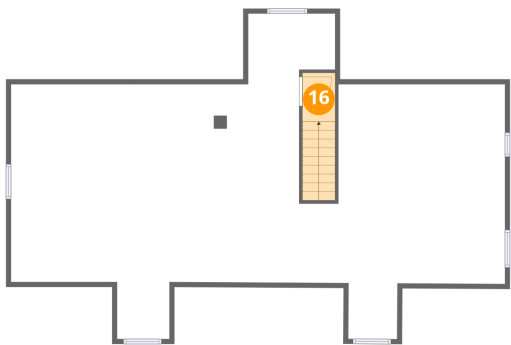
15 Floor 2 - Foyer



Dimensions: 10'5" x 13'3"
Area: 135 sq. ft
Counted as living area: Yes

Heated: Yes
Finished: Yes
Enclosed: Yes
Contiguous: Yes
Permitted: Yes
Wet space: No
Addition: No
Conversion: No

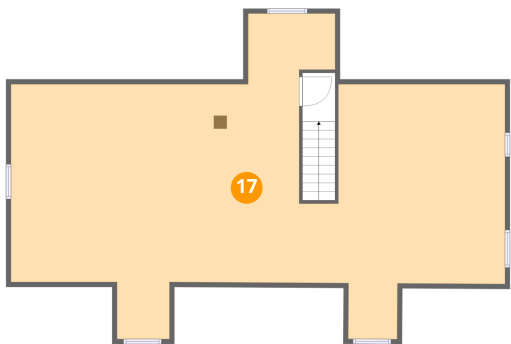
16 Floor 3 - Hall



Dimensions: 3'4" x 5'0"
Area: 44 sq. ft
Counted as living area: Yes

Heated: Yes
Finished: Yes
Enclosed: Yes
Contiguous: Yes
Permitted: Yes
Wet space: No
Addition: No
Conversion: No

17 Floor 3 - Attic



Dimensions: 50'11" x 27'8"
Area: 1112 sq. ft
Counted as living area: No

Heated: No
Finished: No
Enclosed: Yes
Contiguous: Yes
Permitted: Yes
Wet space: No
Addition: No
Conversion: No