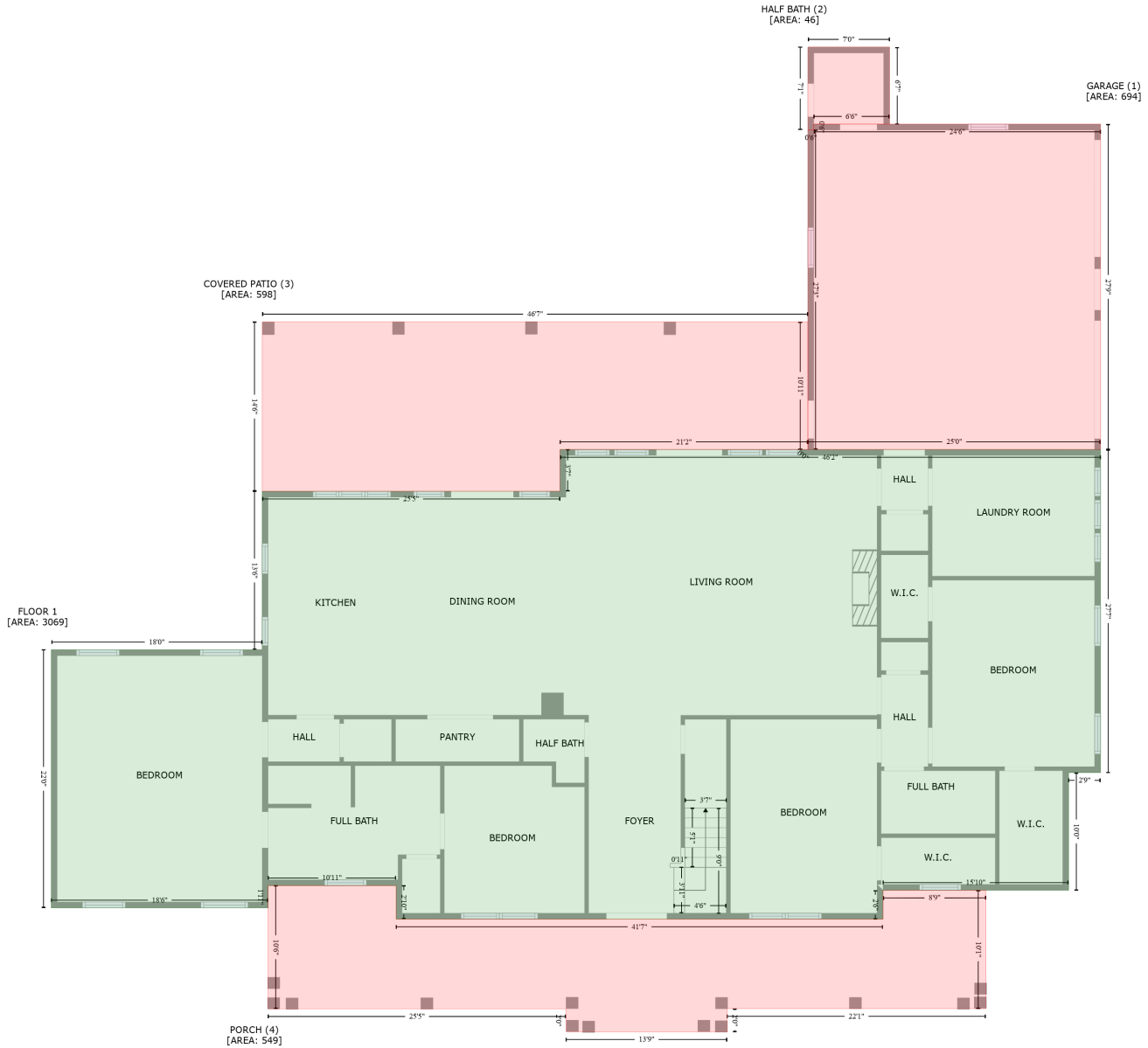


1520 Day Gap Road, Cullman, Cullman County, Alabama, United States, 35057

Gross Living Area: 4381 sq. ft



Space	Area (sq. ft)	Calculation
FLOOR 1 (Living area)	3069	Coordinate Polygon Area Algorithm using inches $-((1078 + 1078) * (406.6 - 737.5) + (1078 + 1045.4) * (737.5 - 737.5) + (1045.4 + 1045.4) * (737.5 - 858) + (1045.4 + 960.6) * (858 - 858) + (960.6 + 960.6) * (858 - 857.9) + (960.6 + 855.2) * (857.9 - 858) + (855.2 + 855.2) * (858 - 887.5) + (855.2 + 356.4) * (887.5 - 887.5) + (356.4 + 356.4) * (887.5 - 853.2) + (356.4 + 225.2) * (853.2 - 853.2) + (225.2 + 225.2) * (853.2 - 876) + (225.2 + 3.1) * (876 - 876) + (3.1 + 3.1) * (876 - 611.6) + (3.1 + 219.2) * (611.6 - 611.6) + (219.2 + 219.2) * (611.6 - 449.3) + (219.2 + 524.3) * (449.3 - 449.3) + (524.3 + 524.3) * (449.3 - 406.6) + (524.3 + 778.3) * (406.6 - 406.6) + (778.3 + 778.3) * (406.7 - 406.6) + (778.3 + 1078) * (406.6 -$

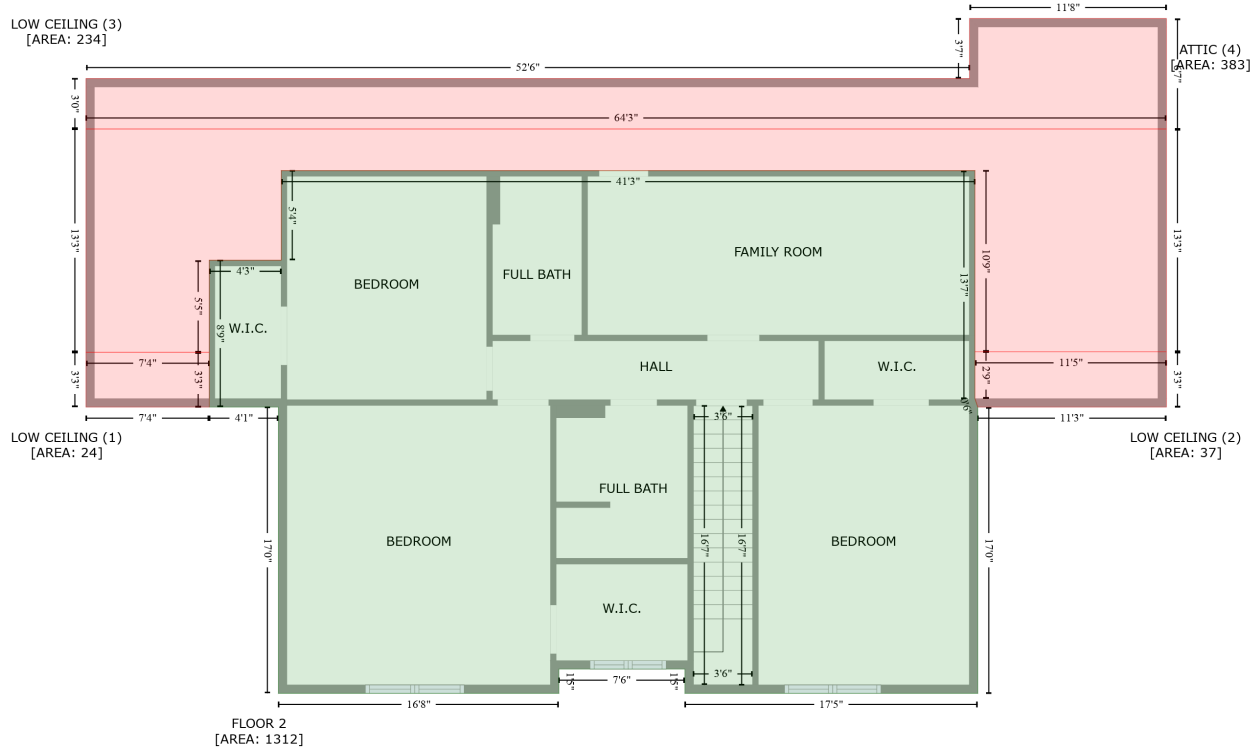
1520 Day Gap Road, Cullman, Cullman County, Alabama, United States, 35057

Gross Living Area: 4381 sq. ft

Space	Area (sq. ft)	Calculation <small>Coordinate Polygon Area Algorithm using inches</small>
GARAGE (Non-living area)	694	$406.6) * 0.5 * 0.00694$ $-((1078 + 1078) * (73.3 - 406.6) + (1078 + 778.3) * (406.6 - 406.6) + (778.3 + 778.3) * (406.6 - 79.3) + (778.3 + 784.3) * (79.3 - 79.3) + (784.3 + 784.3) * (79.3 - 73.3) + (784.3 + 1078) * (73.3 - 73.3)) * 0.5 * 0.00694$
HALF BATH (Non-living area)	46	$-((861.9 + 861.9) * (-5.6 - 73.3) + (861.9 + 784.3) * (73.3 - 73.3) + (784.3 + 784.3) * (73.3 - 79.3) + (784.3 + 778.3) * (79.3 - 79.3) + (778.3 + 778.3) * (79.3 - -5.6) + (778.3 + 861.9) * (-5.6 - -5.6)) * 0.5 * 0.00694$
COVERED PATIO (Non-living area)	598	$-((778.3 + 778.3) * (275.8 - 406.6) + (778.3 + 778.3) * (406.6 - 406.7) + (778.3 + 524.3) * (406.7 - 406.6) + (524.3 + 524.3) * (406.6 - 449.3) + (524.3 + 219.2) * (449.3 - 449.3) + (219.2 + 219.2) * (449.3 - 275.8) + (219.2 + 778.3) * (275.8 - 275.8)) * 0.5 * 0.00694$
PORCH (Non-living area)	549	$-((356.4 + 356.4) * (853.2 - 887.5) + (356.4 + 855.2) * (887.5 - 887.5) + (855.2 + 855.2) * (887.5 - 858) + (855.2 + 960.6) * (858 - 857.9) + (960.6 + 960.6) * (857.9 - 979.2) + (960.6 + 695.5) * (979.2 - 979.2) + (695.5 + 695.5) * (979.2 - 1002.9) + (695.5 + 530.5) * (1002.9 - 1002.9) + (530.5 + 530.5) * (1002.9 - 979.4) + (530.5 + 225.2) * (979.4 - 979.4) + (225.2 + 225.2) * (979.4 - 853.2) + (225.2 + 356.4) * (853.2 - 853.2)) * 0.5 * 0.00694$

1520 Day Gap Road, Cullman, Cullman County, Alabama, United States, 35057

Gross Living Area: 4381 sq. ft



Space	Area (sq. ft)	Calculation
FLOOR 2 (Living area)	1312	$-\left((853.2 + 853.2) * (515 - 677.5) + (853.2 + 855.2) * (677.5 - 683.5) + (855.2 + 855.2) * (683.5 - 887.5) + (855.2 + 646.3) * (887.5 - 887.5) + (646.3 + 646.3) * (887.5 - 870.2) + (646.3 + 556.5) * (870.2 - 870.2) + (556.5 + 556.5) * (870.2 - 887.5) + (556.5 + 356.4) * (887.5 - 887.5) + (356.4 + 356.4) * (887.5 - 683.5) + (356.4 + 307.1) * (683.5 - 683.5) + (307.1 + 307.1) * (683.5 - 578.9) + (307.1 + 358.4) * (578.9 - 578.9) + (358.4 + 358.4) * (578.9 - 515) + (358.4 + 853.2) * (515 - 515)\right) * 0.5 * 0.00694$
LOW CEILING (Non-living area)	24	$-\left((307.1 + 307.1) * (644.4 - 683.5) + (307.1 + 219.2) * (683.5 - 683.5) + (219.2 + 219.2) * (683.5 - 644.4) + (219.2 + 307.1) * (644.4 - 644.4)\right) * 0.5 * 0.00694$
LOW CEILING (Non-living area)	37	$-\left((989.7 + 989.7) * (644 - 683.5) + (989.7 + 855.2) * (683.5 - 683.5) + (855.2 + 853.2) * (683.5 - 677.5) + (853.2 + 853.2) * (677.5 - 644) + (853.2 + 989.7) * (644 - 644)\right) * 0.5 * 0.00694$
LOW CEILING (Non-living area)	234	$-\left((989.7 + 989.7) * (406.6 - 485.3) + (989.7 + 219.2) * (485.3 - 485.3) + (219.2 + 219.2) * (485.3 - 449.3) + (219.2 + 849.4) * (449.3 - 449.3) + (849.4 + 849.4) * (449.3 - 406.6) + (849.4 + 989.7) * (406.6 - 406.6)\right) * 0.5 * 0.00694$
ATTIC (Non-living area)	383	$-\left((989.7 + 989.7) * (485.3 - 644) + (989.7 + 853.2) * (644 - 644) + (853.2 + 853.2) * (644 - 515) + (853.2 + 358.4) * (515 - 515) + (358.4 + 358.4) * (515 - 578.9) + (358.4 + 307.1) * (578.9 - 578.9) + (307.1 + 307.1) * (578.9 - 644.4) + (307.1 + 219.2) * (644.4 - 644.4) + (219.2 + 219.2) * (644.4 - 485.3) + (219.2 + 989.7) * (485.3 - 485.3)\right) * 0.5 * 0.00694$