


Home report

4850 Lougean Ave,Pittsburgh,PA,US




Property summary




1

Garages




3

Bedrooms



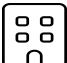
1

Bathrooms




1

Half baths




4

Floors



1,718

Gross living area sqft

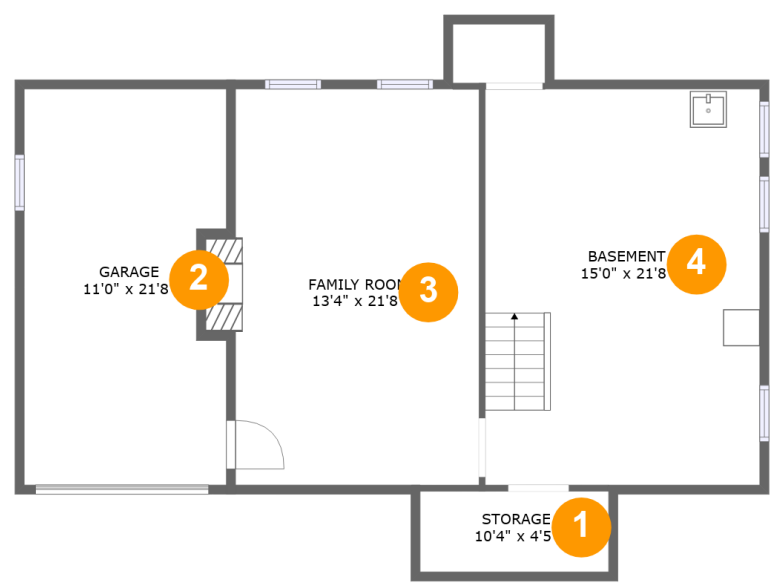


3,268

Total sqft

Home report

4850 Lougean Ave,Pittsburgh,PA,US



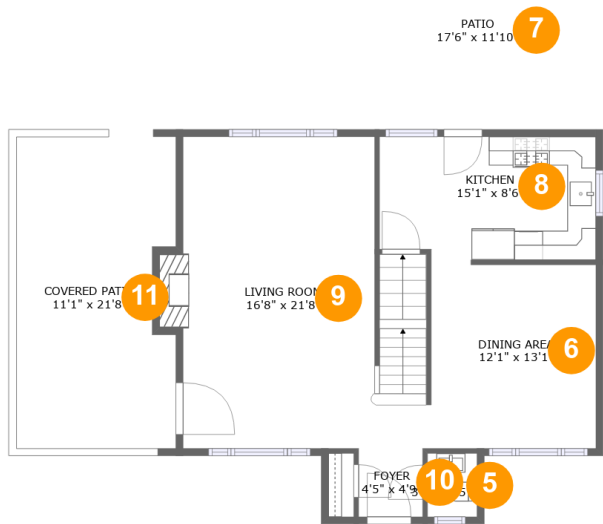
Room dimensions

Floor 1 Total sqft: 1012 Living area: 0

#		Dimensions	sqft	Counted as living area
1	Storage	10'4" x 4'5"	46 sq. ft	No
2	Garage	11'0" x 21'8"	230 sq. ft	No
3	Family Room	13'4" x 21'8"	297 sq. ft	No
4	Basement	15'0" x 21'8"	326 sq. ft	No

Home report

4850 Lougean Ave,Pittsburgh,PA,US



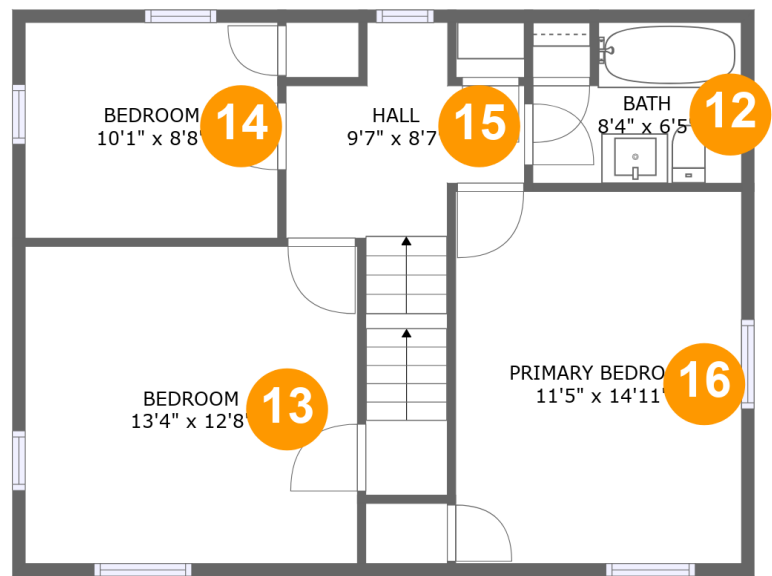
Room dimensions

Floor 2 Total sqft: 1178 Living area: 729

#		Dimensions	sqft	Counted as living area
5	WC	3'5" x 4'5"	15 sq. ft	Yes
6	Dining Area	12'1" x 13'1"	149 sq. ft	Yes
7	Patio	17'6" x 11'10"	209 sq. ft	No
8	Kitchen	15'1" x 8'6"	126 sq. ft	Yes
9	Living Room	16'8" x 21'8"	342 sq. ft	Yes
10	Foyer	4'5" x 4'9"	21 sq. ft	Yes
11	Covered Patio	11'1" x 21'8"	230 sq. ft	No

Home report

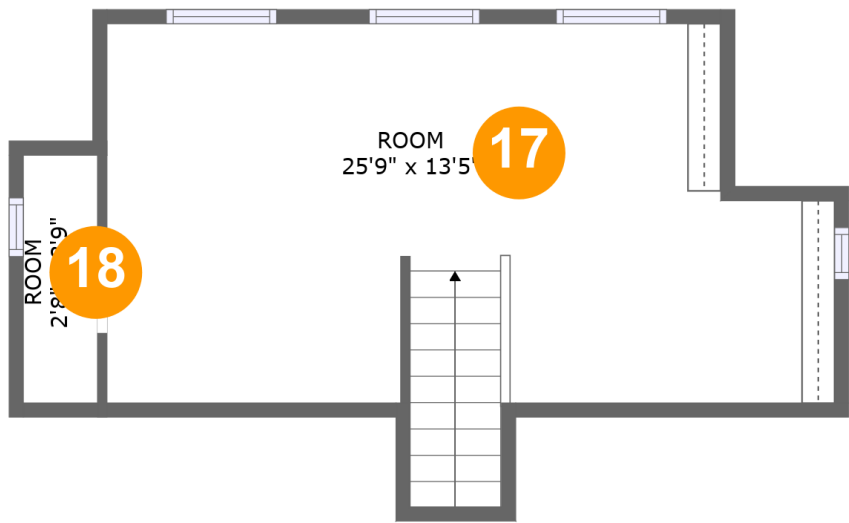
4850 Lougean Ave,Pittsburgh,PA,US



Room dimensions

Floor 3 Total sqft: 673 Living area: 673

#		Dimensions	sqft	Counted as living area
12	Bath	8'4" x 6'5"	47 sq. ft	Yes
13	Bedroom	13'4" x 12'8"	169 sq. ft	Yes
14	Bedroom	10'1" x 8'8"	87 sq. ft	Yes
15	Hall	9'7" x 8'7"	93 sq. ft	Yes
16	Primary Bedroom	11'5" x 14'11"	171 sq. ft	Yes

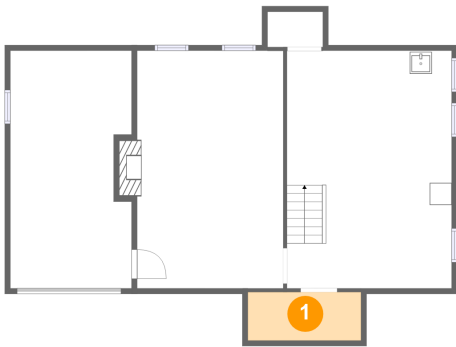


Room dimensions

Floor 4 Total sqft: 405 Living area: 316

#		Dimensions	sqft	Counted as living area
17	Room	25'9" x 13'5"	278 sq. ft	Yes
18	Room	2'8" x 8'9"	13 sq. ft	Yes

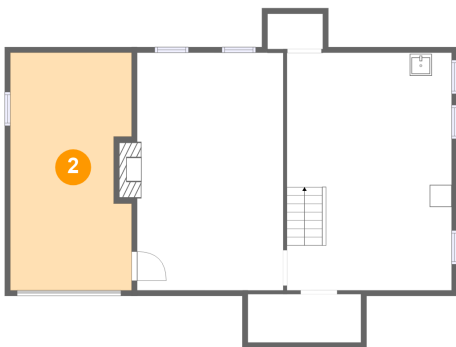
1 Floor 1 - Storage



Dimensions: 10'4" x 4'5"
Area: 46 sq. ft
Counted as living area: No

Heated: No
Finished: No
Enclosed: No
Contiguous: Yes
Permitted: Yes
Wet space: No
Addition: No
Conversion: No

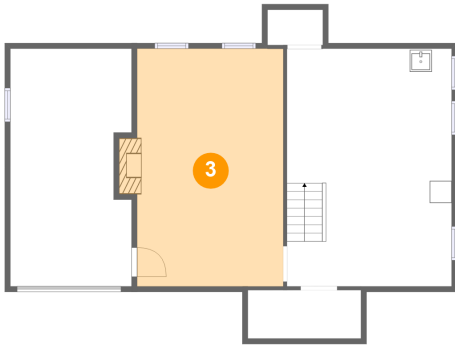
2 Floor 1 - Garage



Dimensions: 11'0" x 21'8"
Area: 230 sq. ft
Counted as living area: No

Heated: No
Finished: No
Enclosed: Yes
Contiguous: Yes
Permitted: Yes
Wet space: No
Addition: No
Conversion: No

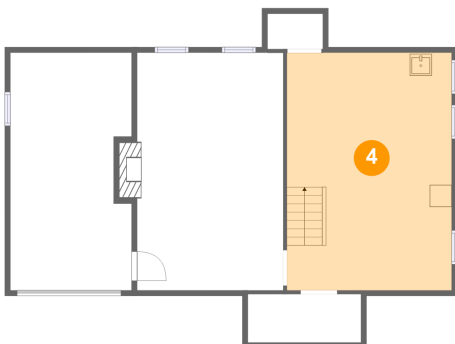
3 Floor 1 - Family Room



Dimensions: 13'4" x 21'8"
Area: 297 sq. ft
Counted as living area: No

Heated: Yes
Finished: Yes
Enclosed: Yes
Contiguous: No
Permitted: Yes
Wet space: No
Addition: No
Conversion: No

4 Floor 1 - Basement



Dimensions: 15'0" x 21'8"
Area: 326 sq. ft
Counted as living area: No

Heated: Yes
Finished: No
Enclosed: Yes
Contiguous: Yes
Permitted: Yes
Wet space: No
Addition: No
Conversion: No

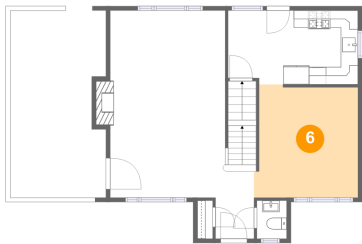
5 Floor 2 - WC



Dimensions: 3'5" x 4'5"
Area: 15 sq. ft
Counted as living area: Yes

Heated: Yes
Finished: Yes
Enclosed: Yes
Contiguous: Yes
Permitted: Yes
Wet space: Yes
Addition: No
Conversion: No

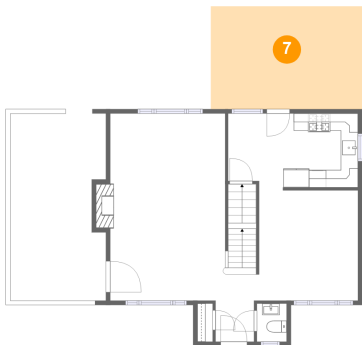
6 Floor 2 - Dining Area



Dimensions: 12'1" x 13'1"
Area: 149 sq. ft
Counted as living area: Yes

Heated: Yes
Finished: Yes
Enclosed: Yes
Contiguous: Yes
Permitted: Yes
Wet space: No
Addition: No
Conversion: No

7 Floor 2 - Patio



Dimensions: 17'6" x 11'10"
Area: 209 sq. ft
Counted as living area: No

Heated: No
Finished: Yes
Enclosed: No
Contiguous: Yes
Permitted: Yes
Wet space: No
Addition: No
Conversion: No

8 Floor 2 - Kitchen



Dimensions: 15'1" x 8'6"
Area: 126 sq. ft
Counted as living area: Yes

Heated: Yes
Finished: Yes
Enclosed: Yes
Contiguous: Yes
Permitted: Yes
Wet space: No
Addition: No
Conversion: No

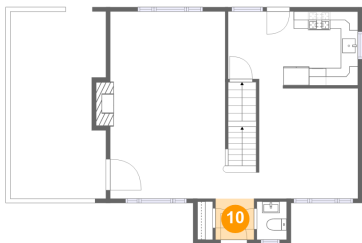
9 Floor 2 - Living Room



Dimensions: 16'8" x 21'8"
Area: 342 sq. ft
Counted as living area: Yes

Heated: Yes
Finished: Yes
Enclosed: Yes
Contiguous: Yes
Permitted: Yes
Wet space: No
Addition: No
Conversion: No

10 Floor 2 - Foyer



Dimensions: 4'5" x 4'9"
Area: 21 sq. ft
Counted as living area: Yes

Heated: Yes
Finished: Yes
Enclosed: Yes
Contiguous: Yes
Permitted: Yes
Wet space: No
Addition: No
Conversion: No

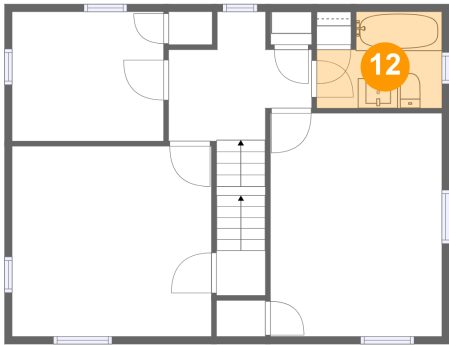
11 Floor 2 - Covered Patio



Dimensions: 11'1" x 21'8"
Area: 230 sq. ft
Counted as living area: No

Heated: No
Finished: Yes
Enclosed: No
Contiguous: Yes
Permitted: Yes
Wet space: No
Addition: No
Conversion: No

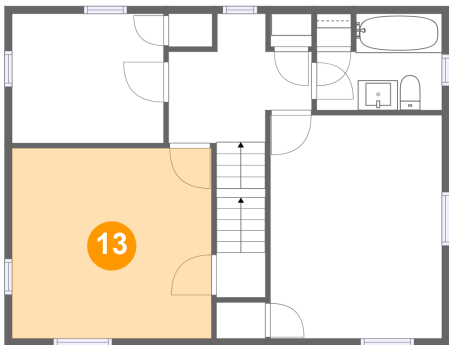
12 Floor 3 - Bath



Dimensions: 8'4" x 6'5"
Area: 47 sq. ft
Counted as living area: Yes

Heated: Yes
Finished: Yes
Enclosed: Yes
Contiguous: Yes
Permitted: Yes
Wet space: Yes
Addition: No
Conversion: No

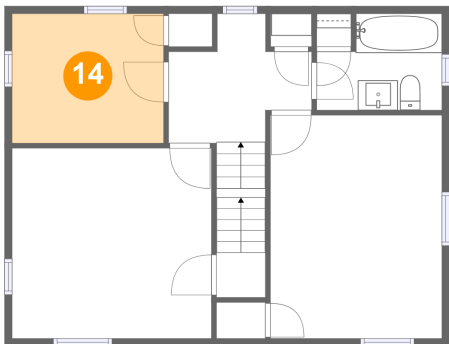
13 Floor 3 - Bedroom



Dimensions: 13'4" x 12'8"
Area: 169 sq. ft
Counted as living area: Yes

Heated: Yes
Finished: Yes
Enclosed: Yes
Contiguous: Yes
Permitted: Yes
Wet space: No
Addition: No
Conversion: No

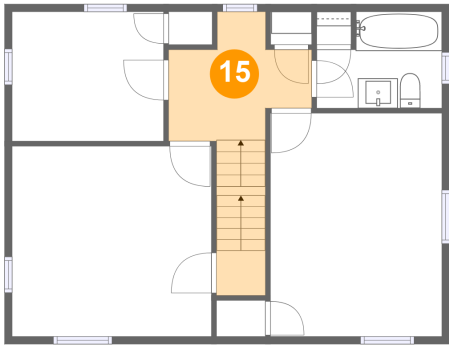
14 Floor 3 - Bedroom



Dimensions: 10'1" x 8'8"
Area: 87 sq. ft
Counted as living area: Yes

Heated: Yes
Finished: Yes
Enclosed: Yes
Contiguous: Yes
Permitted: Yes
Wet space: No
Addition: No
Conversion: No

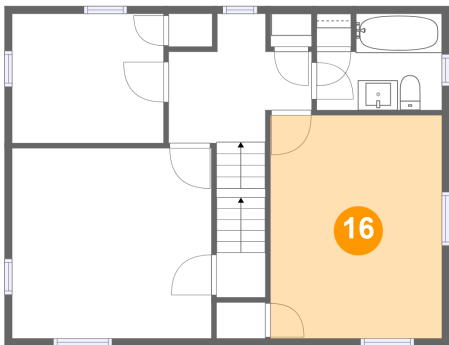
15 Floor 3 - Hall



Dimensions: 9'7" x 8'7"
Area: 93 sq. ft
Counted as living area: Yes

Heated: Yes
Finished: Yes
Enclosed: Yes
Contiguous: Yes
Permitted: Yes
Wet space: No
Addition: No
Conversion: No

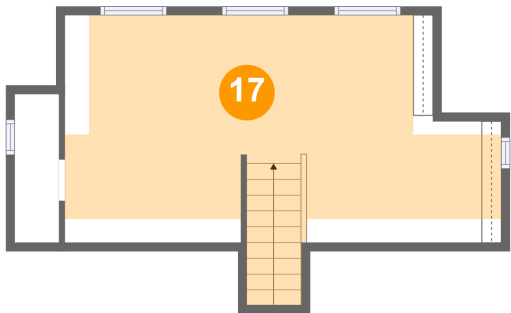
16 Floor 3 - Primary Bedroom



Dimensions: 11'5" x 14'11"
Area: 171 sq. ft
Counted as living area: Yes

Heated: Yes
Finished: Yes
Enclosed: Yes
Contiguous: Yes
Permitted: Yes
Wet space: No
Addition: No
Conversion: No

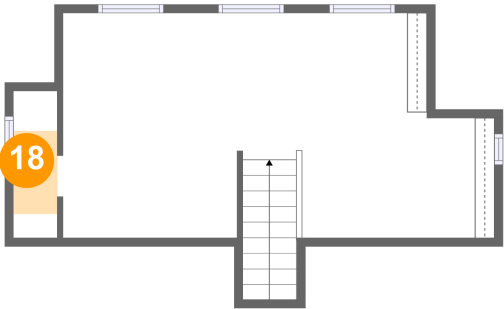
17 Floor 4 - Room



Dimensions: 25'9" x 13'5"
Area: 278 sq. ft
Counted as living area: Yes

Heated: Yes
Finished: Yes
Enclosed: Yes
Contiguous: Yes
Permitted: Yes
Wet space: No
Addition: No
Conversion: No

18 Floor 4 - Room



Dimensions: 2'8" x 8'9"
Area: 13 sq. ft
Counted as living area: Yes

Heated: Yes
Finished: Yes
Enclosed: Yes
Contiguous: Yes
Permitted: Yes
Wet space: No
Addition: No
Conversion: No