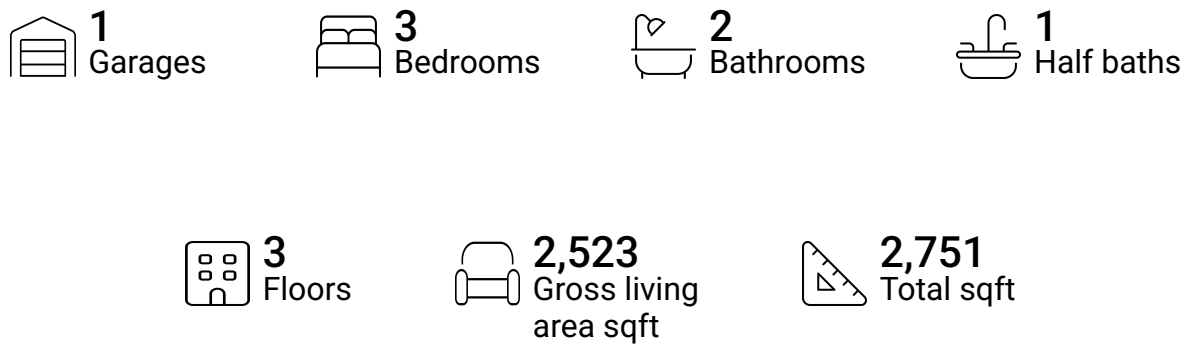


Home report

931 Géographe Terrace, Cumberland, Orléans, Ontario, Canada,  
K4A 1J6

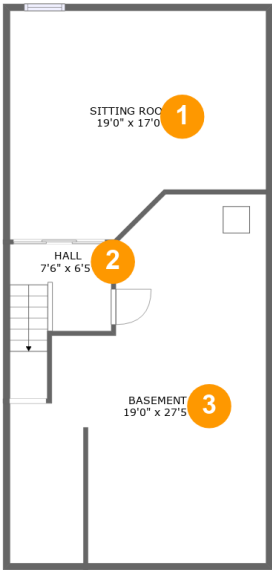


Property summary



Home report

931 Géographe Terrace, Cumberland, Orléans, Ontario, Canada,  
K4A 1J6



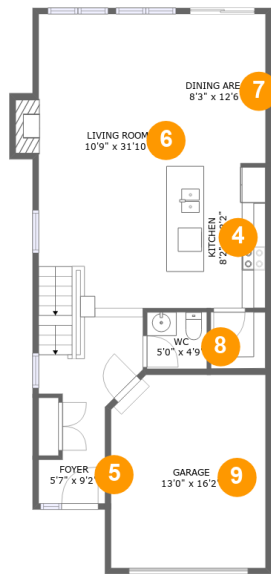
Room dimensions

Floor 1 Total sqft: 821    Living area: 821

#		Dimensions	sqft	Counted as living area
1	Sitting Room	19'0" x 17'0"	288 sq. ft	Yes
2	Hall	7'6" x 6'5"	63 sq. ft	Yes
3	Basement	19'0" x 27'5"	413 sq. ft	Yes

Home report

931 Géographe Terrace, Cumberland, Orléans, Ontario, Canada,  
K4A 1J6



Room dimensions

Floor 2 Total sqft: 914    Living area: 686

#		Dimensions	sqft	Counted as living area
4	Kitchen	8'2" x 12'2"	99 sq. ft	Yes
5	Foyer	5'7" x 9'2"	41 sq. ft	Yes
6	Living Room	10'9" x 31'10"	336 sq. ft	Yes
7	Dining Area	8'3" x 12'6"	103 sq. ft	Yes
8	WC	5'0" x 4'9"	24 sq. ft	Yes
9	Garage	13'0" x 16'2"	206 sq. ft	No

Home report

931 Géographe Terrace, Cumberland, Orléans, Ontario, Canada,  
K4A 1J6



Room dimensions

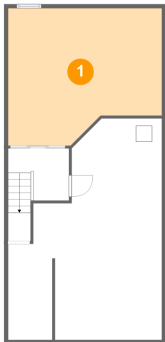
Floor 3

Total sqft: 1016    Living area: 1016

#		Dimensions	sqft	Counted as living area
10	Bedroom	9'0" x 12'9"	105 sq. ft	Yes
11	Laundry	6'6" x 8'11"	58 sq. ft	Yes
12	W.I.C.	6'6" x 13'4"	76 sq. ft	Yes
13	Bedroom	9'9" x 12'9"	124 sq. ft	Yes
14	Bath	6'6" x 15'0"	92 sq. ft	Yes
15	Bath	7'11" x 8'1"	58 sq. ft	Yes
16	Primary Bedroom	12'2" x 18'0"	196 sq. ft	Yes
17	Hall	6'4" x 19'6"	173 sq. ft	Yes

931 Géographe Terrace, Cumberland, Orléans, Ontario, Canada,  
K4A 1J6

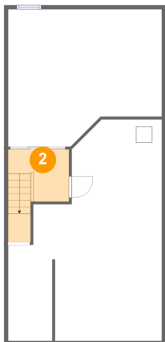
**1 Floor 1 - Sitting Room**



Dimensions: 19'0" x 17'0"  
Area: 288 sq. ft  
Counted as living area: Yes

Heated: Yes  
Finished: Yes  
Enclosed: Yes  
Contiguous: Yes  
Permitted: Yes  
Wet space: No  
Addition: No  
Conversion: No

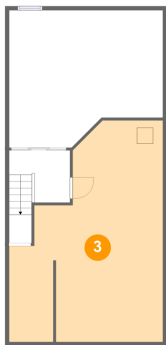
**2 Floor 1 - Hall**



Dimensions: 7'6" x 6'5"  
Area: 63 sq. ft  
Counted as living area: Yes

Heated: Yes  
Finished: Yes  
Enclosed: Yes  
Contiguous: Yes  
Permitted: Yes  
Wet space: No  
Addition: No  
Conversion: No

3 Floor 1 - Basement



Dimensions: 19'0" x 27'5"  
Area: 413 sq. ft  
Counted as living area: Yes

Heated: Yes  
Finished: Yes  
Enclosed: Yes  
Contiguous: Yes  
Permitted: Yes  
Wet space: No  
Addition: No  
Conversion: No

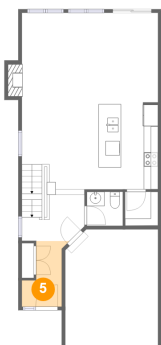
4 Floor 2 - Kitchen



Dimensions: 8'2" x 12'2"  
Area: 99 sq. ft  
Counted as living area: Yes

Heated: Yes  
Finished: Yes  
Enclosed: Yes  
Contiguous: Yes  
Permitted: Yes  
Wet space: No  
Addition: No  
Conversion: No

5 Floor 2 - Foyer



Dimensions: 5'7" x 9'2"  
Area: 41 sq. ft  
Counted as living area: Yes

Heated: Yes  
Finished: Yes  
Enclosed: Yes  
Contiguous: Yes  
Permitted: Yes  
Wet space: No  
Addition: No  
Conversion: No

931 Géographe Terrace, Cumberland, Orléans, Ontario, Canada,  
K4A 1J6

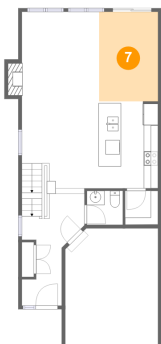
6 Floor 2 - Living Room



Dimensions: 10'9" x 31'10"  
Area: 336 sq. ft  
Counted as living area: Yes

Heated: Yes  
Finished: Yes  
Enclosed: Yes  
Contiguous: Yes  
Permitted: Yes  
Wet space: No  
Addition: No  
Conversion: No

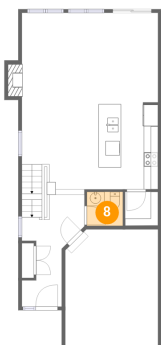
7 Floor 2 - Dining Area



Dimensions: 8'3" x 12'6"  
Area: 103 sq. ft  
Counted as living area: Yes

Heated: Yes  
Finished: Yes  
Enclosed: Yes  
Contiguous: Yes  
Permitted: Yes  
Wet space: No  
Addition: No  
Conversion: No

8 Floor 2 - WC



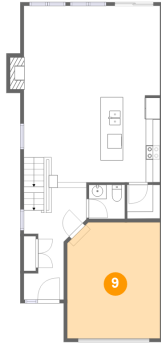
Dimensions: 5'0" x 4'9"  
Area: 24 sq. ft  
Counted as living area: Yes

Heated: Yes  
Finished: Yes  
Enclosed: Yes  
Contiguous: Yes  
Permitted: Yes  
Wet space: Yes  
Addition: No  
Conversion: No

## Home report

931 Géographe Terrace, Cumberland, Orléans, Ontario, Canada,  
K4A 1J6

### 9 Floor 2 - Garage



Dimensions: 13'0" x 16'2"  
Area: 206 sq. ft  
Counted as living area: No

Heated: No  
Finished: No  
Enclosed: Yes  
Contiguous: Yes  
Permitted: Yes  
Wet space: No  
Addition: No  
Conversion: No

### 10 Floor 3 - Bedroom



Dimensions: 9'0" x 12'9"  
Area: 105 sq. ft  
Counted as living area: Yes

Heated: Yes  
Finished: Yes  
Enclosed: Yes  
Contiguous: Yes  
Permitted: Yes  
Wet space: No  
Addition: No  
Conversion: No

### 11 Floor 3 - Laundry



Dimensions: 6'6" x 8'11"  
Area: 58 sq. ft  
Counted as living area: Yes

Heated: Yes  
Finished: Yes  
Enclosed: Yes  
Contiguous: Yes  
Permitted: Yes  
Wet space: No  
Addition: No  
Conversion: No



12 Floor 3 - W.I.C.



Dimensions: 6'6" x 13'4"  
Area: 76 sq. ft  
Counted as living area: Yes

Heated: Yes  
Finished: Yes  
Enclosed: Yes  
Contiguous: Yes  
Permitted: Yes  
Wet space: No  
Addition: No  
Conversion: No

13 Floor 3 - Bedroom



Dimensions: 9'9" x 12'9"  
Area: 124 sq. ft  
Counted as living area: Yes

Heated: Yes  
Finished: Yes  
Enclosed: Yes  
Contiguous: Yes  
Permitted: Yes  
Wet space: No  
Addition: No  
Conversion: No

14 Floor 3 - Bath



Dimensions: 6'6" x 15'0"  
Area: 92 sq. ft  
Counted as living area: Yes

Heated: Yes  
Finished: Yes  
Enclosed: Yes  
Contiguous: Yes  
Permitted: Yes  
Wet space: Yes  
Addition: No  
Conversion: No

15 Floor 3 - Bath



Dimensions: 7'11" x 8'1"  
Area: 58 sq. ft  
Counted as living area: Yes

Heated: Yes  
Finished: Yes  
Enclosed: Yes  
Contiguous: Yes  
Permitted: Yes  
Wet space: Yes  
Addition: No  
Conversion: No

16 Floor 3 - Primary Bedroom



Dimensions: 12'2" x 18'0"  
Area: 196 sq. ft  
Counted as living area: Yes

Heated: Yes  
Finished: Yes  
Enclosed: Yes  
Contiguous: Yes  
Permitted: Yes  
Wet space: No  
Addition: No  
Conversion: No

17 Floor 3 - Hall



Dimensions: 6'4" x 19'6"  
Area: 173 sq. ft  
Counted as living area: Yes

Heated: Yes  
Finished: Yes  
Enclosed: Yes  
Contiguous: Yes  
Permitted: Yes  
Wet space: No  
Addition: No  
Conversion: No