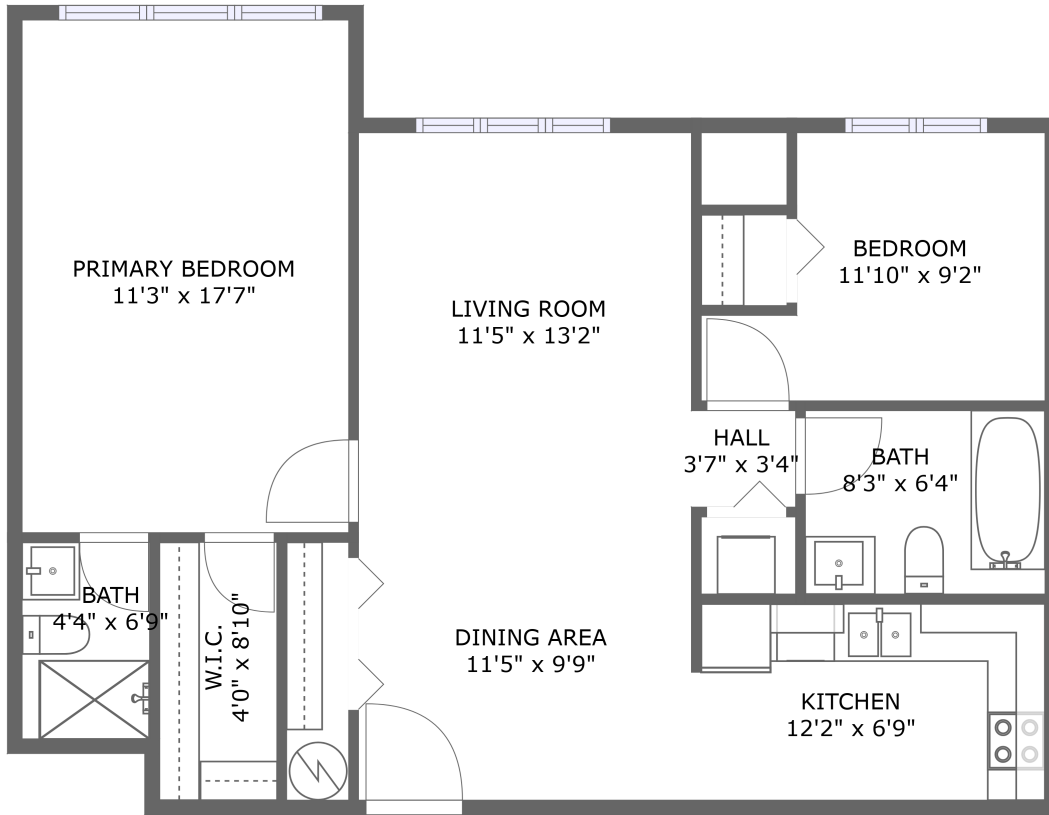






# 500 Mapleview Drive West, Holly, Barrie, Simcoe County, Ontario, Canada, L4N 6C3, 310

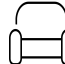



FLOOR 1

## Property Summary

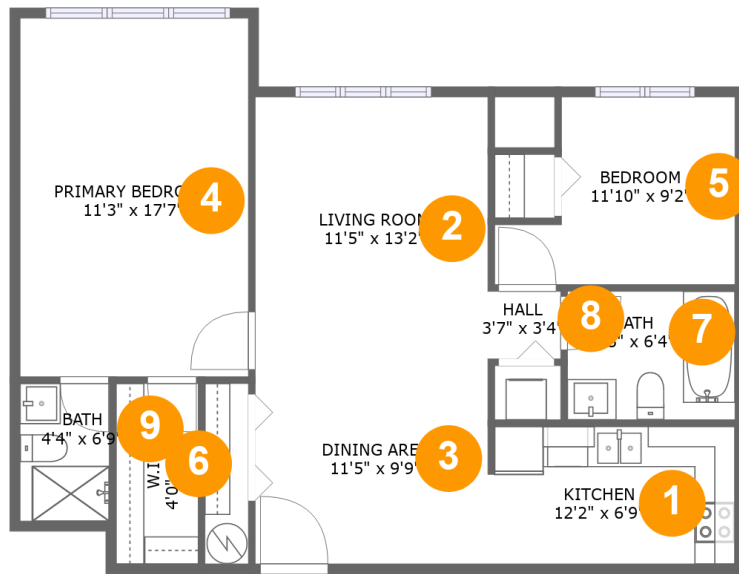
 **0** garages     **2** bedrooms     **2** bathrooms     **0** half baths

 **1** floors

 **840** Gross Living Area sqft

 **840** total sqft

**500 Mapleview Drive West, Holly, Barrie, Simcoe County, Ontario, Canada, L4N 6C3, 310**



**Room Dimensions**

**Floor 1**

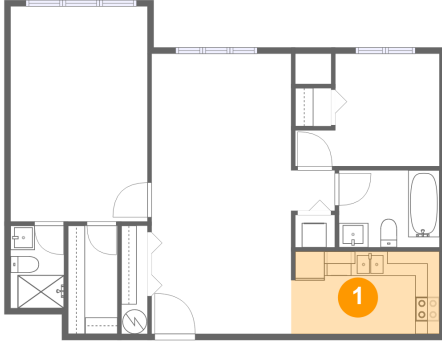
**Total sqft: 840**

**Living area: 840**

#	Room name	Dimensions	Area (sqft)	Counted as Living Area
1	Kitchen	12'2" x 6'9"	81 sq. ft	Yes
2	Living Room	11'5" x 13'2"	151 sq. ft	Yes
3	Dining Area	11'5" x 9'9"	111 sq. ft	Yes
4	Primary Bedroom	11'3" x 17'7"	198 sq. ft	Yes
5	Bedroom	11'10" x 9'2"	88 sq. ft	Yes
6	W.i.c.	4'0" x 8'10"	36 sq. ft	Yes
7	Bath	8'3" x 6'4"	52 sq. ft	Yes
8	Hall	3'7" x 3'4"	12 sq. ft	Yes
9	Bath	4'4" x 6'9"	30 sq. ft	Yes

# 500 Mapleview Drive West, Holly, Barrie, Simcoe County, Ontario, Canada, L4N 6C3, 310

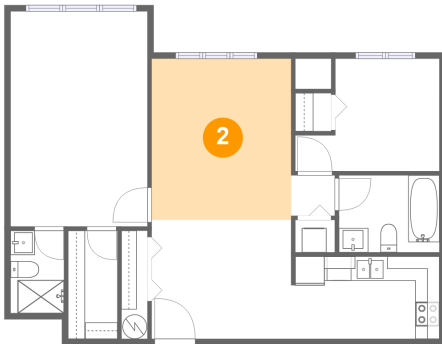
## 1 Floor 1 - Kitchen



Dimensions: 12'2" x 6'9"  
Area: 81 sq. ft  
Counted as Living Area:  
Yes

Heated: Yes  
Finished: Yes  
Enclosed: Yes  
Contiguous:  
Yes  
Permitted: Yes  
Wet Space: No  
Addition: No  
Conversion: No

## 2 Floor 1 - Living Room

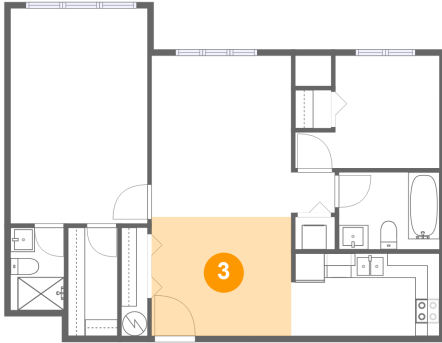


Dimensions: 11'5" x 13'2"  
Area: 151 sq. ft  
Counted as Living Area:  
Yes

Heated: Yes  
Finished: Yes  
Enclosed: Yes  
Contiguous:  
Yes  
Permitted: Yes  
Wet Space: No  
Addition: No  
Conversion: No

# 500 Mapleview Drive West, Holly, Barrie, Simcoe County, Ontario, Canada, L4N 6C3, 310

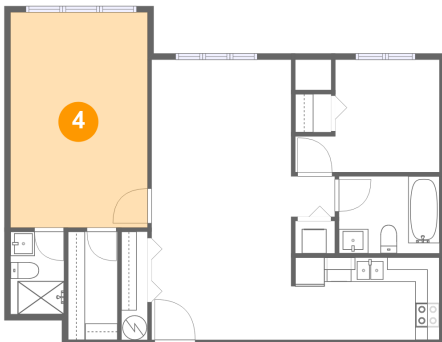
## 3 Floor 1 - Dining Area



Dimensions: 11'5" x 9'9"  
Area: 111 sq. ft  
Counted as Living Area:  
Yes

Heated: Yes  
Finished: Yes  
Enclosed: Yes  
Contiguous:  
Yes  
Permitted: Yes  
Wet Space: No  
Addition: No  
Conversion: No

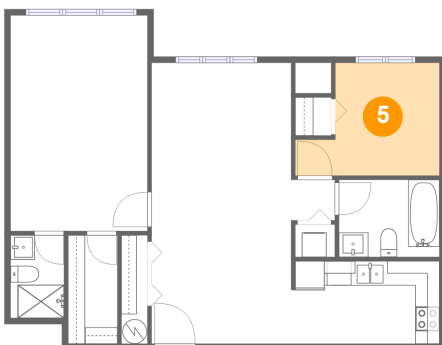
## 4 Floor 1 - Primary Bedroom



Dimensions: 11'3" x 17'7"  
Area: 198 sq. ft  
Counted as Living Area:  
Yes

Heated: Yes  
Finished: Yes  
Enclosed: Yes  
Contiguous:  
Yes  
Permitted: Yes  
Wet Space: No  
Addition: No  
Conversion: No

## 5 Floor 1 - Bedroom

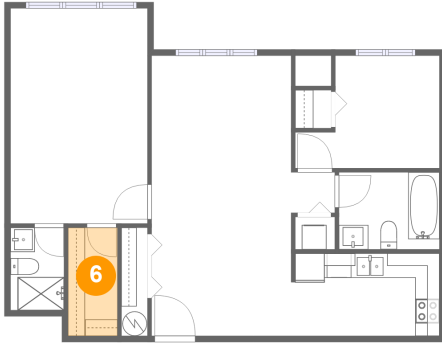


Dimensions: 11'10" x 9'2"  
Area: 88 sq. ft  
Counted as Living Area:  
Yes

Heated: Yes  
Finished: Yes  
Enclosed: Yes  
Contiguous:  
Yes  
Permitted: Yes  
Wet Space: No  
Addition: No  
Conversion: No

# 500 Mapleview Drive West, Holly, Barrie, Simcoe County, Ontario, Canada, L4N 6C3, 310

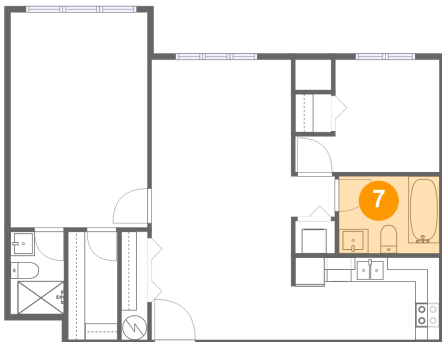
## 6 Floor 1 - W.i.c.



Dimensions: 4'0" x 8'10"  
Area: 36 sq. ft  
Counted as Living Area:  
Yes

Heated: Yes  
Finished: Yes  
Enclosed: Yes  
Contiguous:  
Yes  
Permitted: Yes  
Wet Space: No  
Addition: No  
Conversion: No

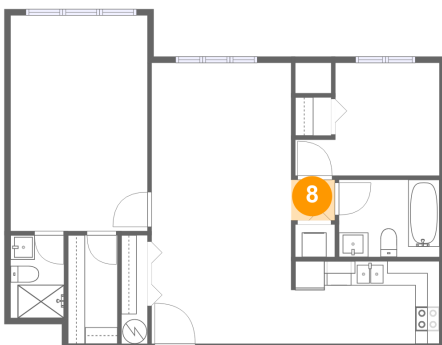
## 7 Floor 1 - Bath



Dimensions: 8'3" x 6'4"  
Area: 52 sq. ft  
Counted as Living Area:  
Yes

Heated: Yes  
Finished: Yes  
Enclosed: Yes  
Contiguous:  
Yes  
Permitted: Yes  
Wet Space: Yes  
Addition: No  
Conversion: No

## 8 Floor 1 - Hall

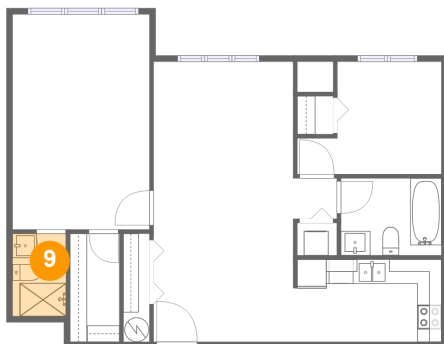


Dimensions: 3'7" x 3'4"  
Area: 12 sq. ft  
Counted as Living Area:  
Yes

Heated: Yes  
Finished: Yes  
Enclosed: Yes  
Contiguous:  
Yes  
Permitted: Yes  
Wet Space: No  
Addition: No  
Conversion: No

# 500 Mapleview Drive West, Holly, Barrie, Simcoe County, Ontario, Canada, L4N 6C3, 310

## 9 Floor 1 - Bath



Dimensions: 4'4" x 6'9"  
Area: 30 sq. ft  
Counted as Living Area:  
Yes

Heated: Yes  
Finished: Yes  
Enclosed: Yes  
Contiguous:  
Yes  
Permitted: Yes  
Wet Space: Yes  
Addition: No  
Conversion: No