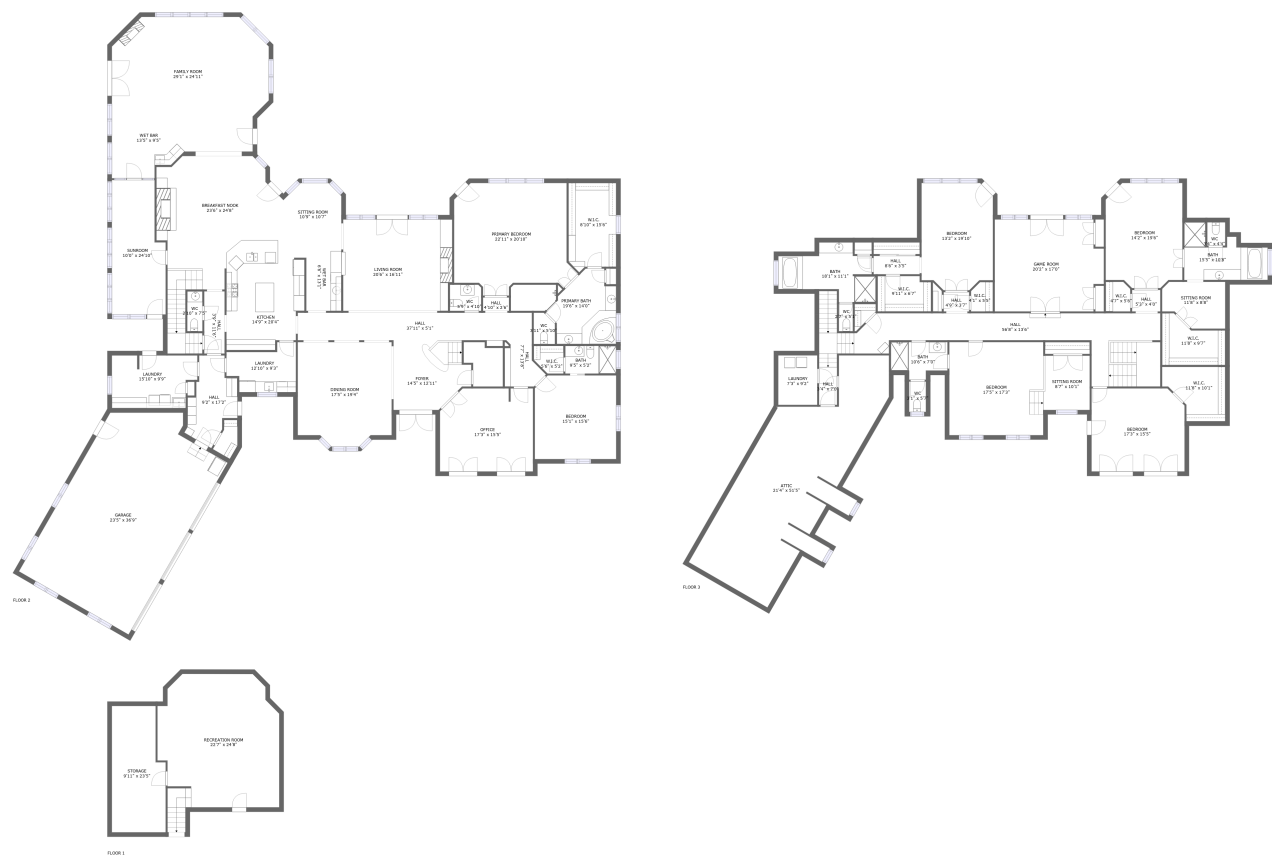




Home report


1271 Becket Drive Southeast, Monte Sano, Huntsville, Madison County, Alabama, United States, 35801





Property summary


 **1** Garages


 **6** Bedrooms

 **5** Bathrooms

 **2** Half baths

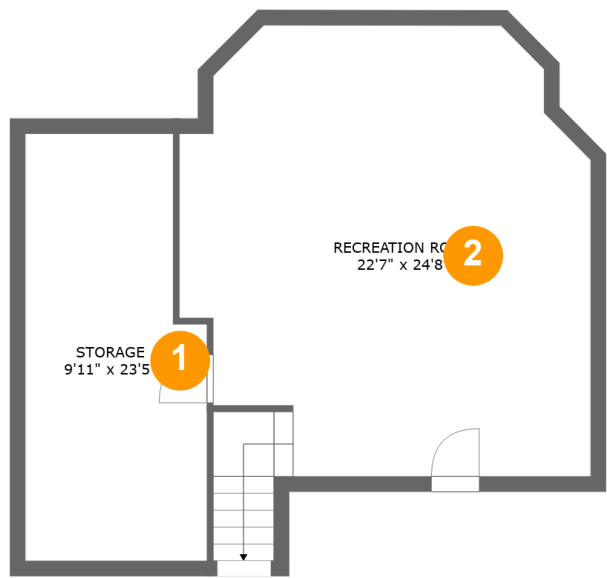
 **3** Floors

 **8,641** Gross living area sqft

 **11,289** Total sqft

Home report

1271 Becket Drive Southeast, Monte Sano, Huntsville, Madison  
County, Alabama, United States, 35801



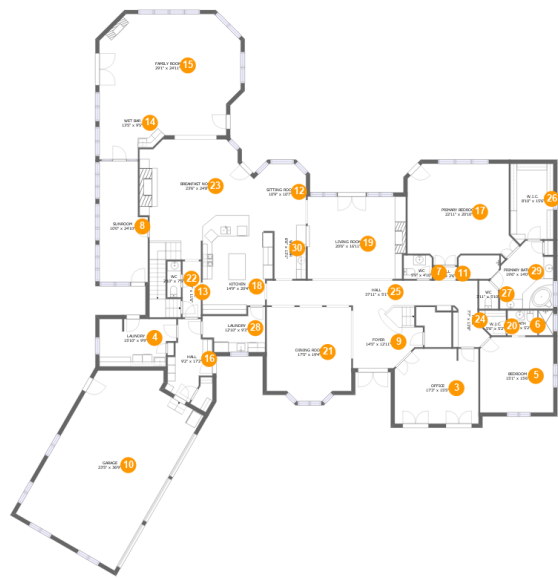
Room dimensions

Floor 1 Total sqft: 844    Living area: 0

#		Dimensions	sqft	Counted as living area
1	Storage	9'11" x 23'5"	214 sq. ft	No
2	Recreation Room	22'7" x 24'8"	521 sq. ft	No

Home report

1271 Becket Drive Southeast, Monte Sano, Huntsville, Madison County, Alabama, United States, 35801



Room dimensions

Floor 2 Total sqft: 6267    Living area: 5318

#		Dimensions	sqft	Counted as living area
3	Office	17'3" x 15'5"	255 sq. ft	Yes
4	Laundry	15'10" x 9'9"	143 sq. ft	Yes
5	Bedroom	15'1" x 15'6"	230 sq. ft	Yes
6	Bath	9'5" x 5'2"	48 sq. ft	Yes
7	WC	5'9" x 4'10"	28 sq. ft	Yes
8	Sunroom	10'0" x 24'10"	224 sq. ft	Yes
9	Foyer	14'5" x 12'11"	161 sq. ft	Yes
10	Garage	23'5" x 36'9"	871 sq. ft	No
11	Hall	4'10" x 2'6"	12 sq. ft	Yes
12	Sitting Room	10'9" x 10'7"	106 sq. ft	Yes
13	Hall	3'9" x 11'6"	44 sq. ft	Yes

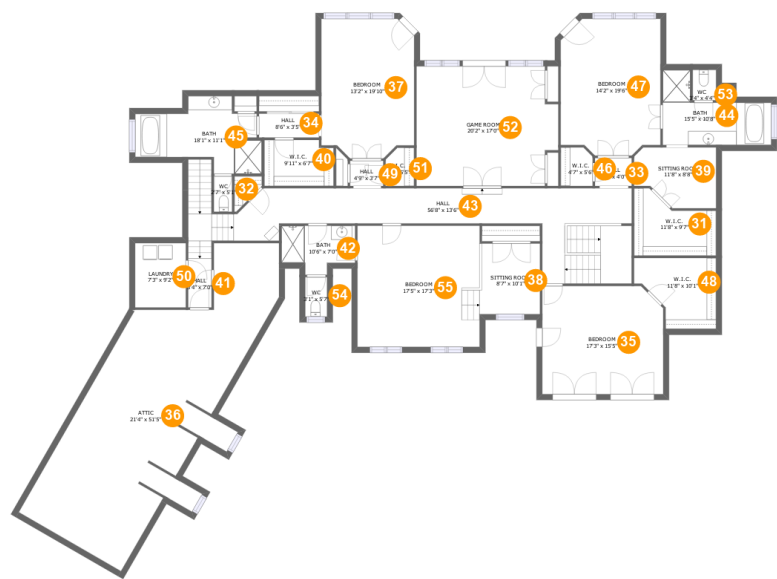
## Home report

**1271 Becket Drive Southeast, Monte Sano, Huntsville, Madison County, Alabama, United States, 35801**

#		Dimensions	sqft	Counted as living area
14	Wet Bar	13'5" x 9'5"	110 sq. ft	Yes
15	Family Room	29'1" x 24'11"	609 sq. ft	Yes
16	Hall	9'2" x 17'2"	109 sq. ft	Yes
17	Primary Bedroom	22'11" x 20'10"	398 sq. ft	Yes
18	Kitchen	14'9" x 20'4"	273 sq. ft	Yes
19	Living Room	20'6" x 16'11"	339 sq. ft	Yes
20	W.I.C.	5'6" x 5'2"	25 sq. ft	Yes
21	Dining Room	17'5" x 19'4"	315 sq. ft	Yes
22	WC	2'10" x 7'5"	21 sq. ft	Yes
23	Breakfast Nook	23'6" x 24'8"	487 sq. ft	Yes
24	Hall	7'7" x 13'8"	76 sq. ft	Yes
25	Hall	37'11" x 5'1"	197 sq. ft	Yes
26	W.I.C.	8'10" x 15'6"	138 sq. ft	Yes
27	WC	3'11" x 5'10"	21 sq. ft	Yes
28	Laundry	12'10" x 9'3"	95 sq. ft	Yes
29	Primary Bath	19'6" x 14'0"	175 sq. ft	Yes
30	Wet Bar	6'6" x 13'1"	85 sq. ft	Yes

Home report

1271 Becket Drive Southeast, Monte Sano, Huntsville, Madison County, Alabama, United States, 35801



Room dimensions

Floor 3

Total sqft: 4178

Living area: 3323

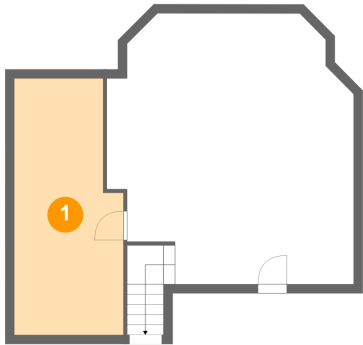
#		Dimensions	sqft	Counted as living area
31	W.I.C.	11'8" x 9'7"	87 sq. ft	Yes
32	WC	2'7" x 5'1"	13 sq. ft	Yes
33	Hall	5'3" x 4'0"	21 sq. ft	Yes
34	Hall	8'6" x 3'5"	29 sq. ft	Yes
35	Bedroom	17'3" x 15'5"	260 sq. ft	Yes
36	Attic	21'4" x 51'5"	572 sq. ft	No
37	Bedroom	13'2" x 19'10"	247 sq. ft	Yes
38	Sitting Room	8'7" x 10'1"	86 sq. ft	Yes
39	Sitting Room	11'8" x 8'8"	88 sq. ft	Yes
40	W.I.C.	9'11" x 6'7"	62 sq. ft	Yes
41	Hall	3'4" x 7'0"	70 sq. ft	Yes

## Home report

**1271 Becket Drive Southeast, Monte Sano, Huntsville, Madison County, Alabama, United States, 35801**

#		Dimensions	sqft	Counted as living area
42	Bath	10'6" x 7'0"	61 sq. ft	Yes
43	Hall	56'8" x 13'6"	411 sq. ft	Yes
44	Bath	15'5" x 10'8"	115 sq. ft	Yes
45	Bath	18'1" x 11'1"	139 sq. ft	Yes
46	W.I.C.	4'7" x 5'6"	24 sq. ft	Yes
47	Bedroom	14'2" x 19'6"	261 sq. ft	Yes
48	W.I.C.	11'8" x 10'1"	94 sq. ft	Yes
49	Hall	4'9" x 3'7"	17 sq. ft	Yes
50	Laundry	7'3" x 9'2"	66 sq. ft	Yes
51	W.I.C.	4'1" x 5'5"	21 sq. ft	Yes
52	Game Room	20'2" x 17'0"	324 sq. ft	Yes
53	WC	3'4" x 4'4"	14 sq. ft	Yes
54	WC	3'1" x 5'7"	17 sq. ft	Yes
55	Bedroom	17'5" x 17'3"	300 sq. ft	Yes

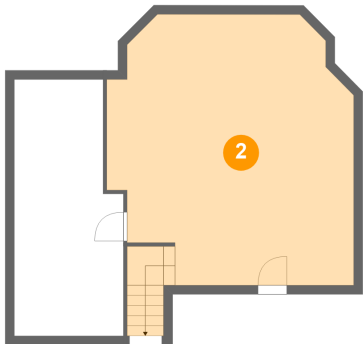
1 Floor 1 - Storage



Dimensions: 9'11" x 23'5"  
Area: 214 sq. ft  
Counted as living area: No

Heated: No  
Finished: No  
Enclosed: No  
Contiguous: Yes  
Permitted: Yes  
Wet space: No  
Addition: No  
Conversion: No

2 Floor 1 - Recreation Room

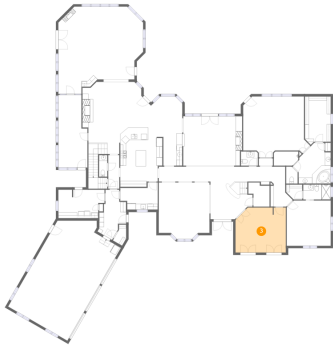


Dimensions: 22'7" x 24'8"  
Area: 521 sq. ft  
Counted as living area: No

Heated: Yes  
Finished: Yes  
Enclosed: Yes  
Contiguous: No  
Permitted: Yes  
Wet space: No  
Addition: No  
Conversion: No

1271 Becket Drive Southeast, Monte Sano, Huntsville, Madison County, Alabama, United States, 35801

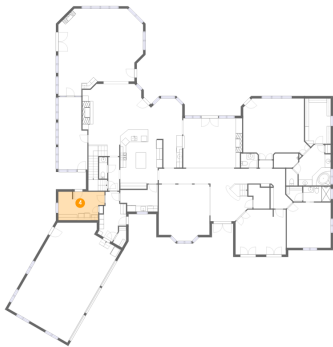
### 3 Floor 2 - Office



Dimensions: 17'3" x 15'5"  
Area: 255 sq. ft  
Counted as living area: Yes

Heated: Yes  
Finished: Yes  
Enclosed: Yes  
Contiguous: Yes  
Permitted: Yes  
Wet space: No  
Addition: No  
Conversion: No

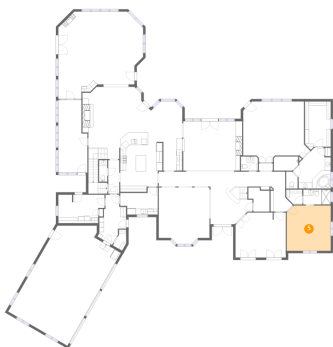
### 4 Floor 2 - Laundry



Dimensions: 15'10" x 9'9"  
Area: 143 sq. ft  
Counted as living area: Yes

Heated: Yes  
Finished: Yes  
Enclosed: Yes  
Contiguous: Yes  
Permitted: Yes  
Wet space: No  
Addition: No  
Conversion: No

### 5 Floor 2 - Bedroom



Dimensions: 15'1" x 15'6"  
Area: 230 sq. ft  
Counted as living area: Yes

Heated: Yes  
Finished: Yes  
Enclosed: Yes  
Contiguous: Yes  
Permitted: Yes  
Wet space: No  
Addition: No  
Conversion: No



6 Floor 2 - Bath



Dimensions: 9'5" x 5'2"  
Area: 48 sq. ft  
Counted as living area: Yes

Heated: Yes  
Finished: Yes  
Enclosed: Yes  
Contiguous: Yes  
Permitted: Yes  
Wet space: Yes  
Addition: No  
Conversion: No

7 Floor 2 - WC



Dimensions: 5'9" x 4'10"  
Area: 28 sq. ft  
Counted as living area: Yes

Heated: Yes  
Finished: Yes  
Enclosed: Yes  
Contiguous: Yes  
Permitted: Yes  
Wet space: Yes  
Addition: No  
Conversion: No

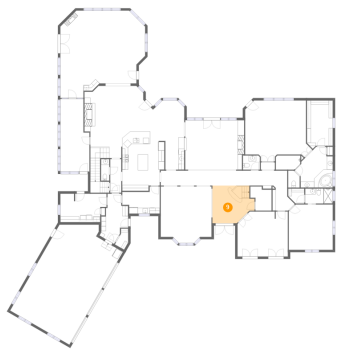
8 Floor 2 - Sunroom



Dimensions: 10'0" x 24'10"  
Area: 224 sq. ft  
Counted as living area: Yes

Heated: Yes  
Finished: Yes  
Enclosed: Yes  
Contiguous: Yes  
Permitted: Yes  
Wet space: No  
Addition: No  
Conversion: No

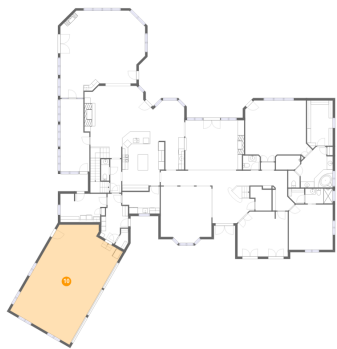
9 Floor 2 - Foyer



Dimensions: 14'5" x 12'11"  
Area: 161 sq. ft  
Counted as living area: Yes

Heated: Yes  
Finished: Yes  
Enclosed: Yes  
Contiguous: Yes  
Permitted: Yes  
Wet space: No  
Addition: No  
Conversion: No

10 Floor 2 - Garage



Dimensions: 23'5" x 36'9"  
Area: 871 sq. ft  
Counted as living area: No

Heated: No  
Finished: No  
Enclosed: Yes  
Contiguous: Yes  
Permitted: Yes  
Wet space: No  
Addition: No  
Conversion: No

11 Floor 2 - Hall



Dimensions: 4'10" x 2'6"  
Area: 12 sq. ft  
Counted as living area: Yes

Heated: Yes  
Finished: Yes  
Enclosed: Yes  
Contiguous: Yes  
Permitted: Yes  
Wet space: No  
Addition: No  
Conversion: No

12 Floor 2 - Sitting Room



Dimensions: 10'9" x 10'7"  
Area: 106 sq. ft  
Counted as living area: Yes

Heated: Yes  
Finished: Yes  
Enclosed: Yes  
Contiguous: Yes  
Permitted: Yes  
Wet space: No  
Addition: No  
Conversion: No

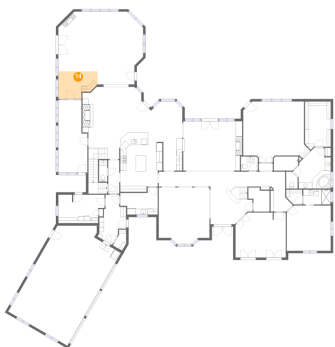
13 Floor 2 - Hall



Dimensions: 3'9" x 11'6"  
Area: 44 sq. ft  
Counted as living area: Yes

Heated: Yes  
Finished: Yes  
Enclosed: Yes  
Contiguous: Yes  
Permitted: Yes  
Wet space: No  
Addition: No  
Conversion: No

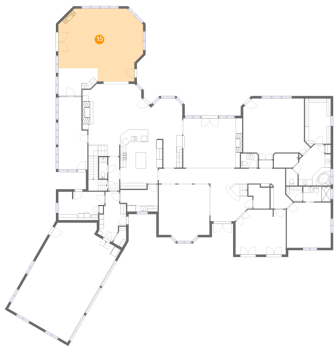
14 Floor 2 - Wet Bar



Dimensions: 13'5" x 9'5"  
Area: 110 sq. ft  
Counted as living area: Yes

Heated: Yes  
Finished: Yes  
Enclosed: Yes  
Contiguous: Yes  
Permitted: Yes  
Wet space: No  
Addition: No  
Conversion: No

15 Floor 2 - Family Room



Dimensions: 29'1" x 24'11"  
Area: 609 sq. ft  
Counted as living area: Yes

Heated: Yes  
Finished: Yes  
Enclosed: Yes  
Contiguous: Yes  
Permitted: Yes  
Wet space: No  
Addition: No  
Conversion: No

16 Floor 2 - Hall



Dimensions: 9'2" x 17'2"  
Area: 109 sq. ft  
Counted as living area: Yes

Heated: Yes  
Finished: Yes  
Enclosed: Yes  
Contiguous: Yes  
Permitted: Yes  
Wet space: No  
Addition: No  
Conversion: No

17 Floor 2 - Primary Bedroom



Dimensions: 22'11" x 20'10"  
Area: 398 sq. ft  
Counted as living area: Yes

Heated: Yes  
Finished: Yes  
Enclosed: Yes  
Contiguous: Yes  
Permitted: Yes  
Wet space: No  
Addition: No  
Conversion: No

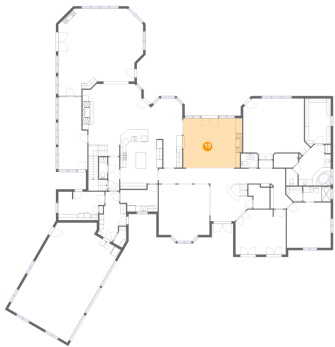
18 Floor 2 - Kitchen



Dimensions: 14'9" x 20'4"  
Area: 273 sq. ft  
Counted as living area: Yes

Heated: Yes  
Finished: Yes  
Enclosed: Yes  
Contiguous: Yes  
Permitted: Yes  
Wet space: No  
Addition: No  
Conversion: No

19 Floor 2 - Living Room



Dimensions: 20'6" x 16'11"  
Area: 339 sq. ft  
Counted as living area: Yes

Heated: Yes  
Finished: Yes  
Enclosed: Yes  
Contiguous: Yes  
Permitted: Yes  
Wet space: No  
Addition: No  
Conversion: No

20 Floor 2 - W.I.C.



Dimensions: 5'6" x 5'2"  
Area: 25 sq. ft  
Counted as living area: Yes

Heated: Yes  
Finished: Yes  
Enclosed: Yes  
Contiguous: Yes  
Permitted: Yes  
Wet space: No  
Addition: No  
Conversion: No

1271 Becket Drive Southeast, Monte Sano, Huntsville, Madison  
County, Alabama, United States, 35801

## 21 Floor 2 - Dining Room



Dimensions: 17'5" x 19'4"  
Area: 315 sq. ft  
Counted as living area: Yes

Heated: Yes  
Finished: Yes  
Enclosed: Yes  
Contiguous: Yes  
Permitted: Yes  
Wet space: No  
Addition: No  
Conversion: No

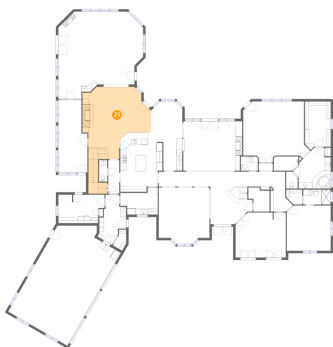
## 22 Floor 2 - WC



Dimensions: 2'10" x 7'5"  
Area: 21 sq. ft  
Counted as living area: Yes

Heated: Yes  
Finished: Yes  
Enclosed: Yes  
Contiguous: Yes  
Permitted: Yes  
Wet space: Yes  
Addition: No  
Conversion: No

## 23 Floor 2 - Breakfast Nook



Dimensions: 23'6" x 24'8"  
Area: 487 sq. ft  
Counted as living area: Yes

Heated: Yes  
Finished: Yes  
Enclosed: Yes  
Contiguous: Yes  
Permitted: Yes  
Wet space: No  
Addition: No  
Conversion: No

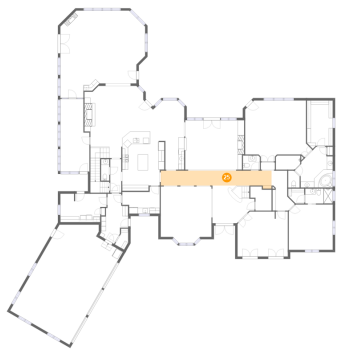
24 Floor 2 - Hall



Dimensions: 7'7" x 13'8"  
Area: 76 sq. ft  
Counted as living area: Yes

Heated: Yes  
Finished: Yes  
Enclosed: Yes  
Contiguous: Yes  
Permitted: Yes  
Wet space: No  
Addition: No  
Conversion: No

25 Floor 2 - Hall



Dimensions: 37'11" x 5'1"  
Area: 197 sq. ft  
Counted as living area: Yes

Heated: Yes  
Finished: Yes  
Enclosed: Yes  
Contiguous: Yes  
Permitted: Yes  
Wet space: No  
Addition: No  
Conversion: No

26 Floor 2 - W.I.C.



Dimensions: 8'10" x 15'6"  
Area: 138 sq. ft  
Counted as living area: Yes

Heated: Yes  
Finished: Yes  
Enclosed: Yes  
Contiguous: Yes  
Permitted: Yes  
Wet space: No  
Addition: No  
Conversion: No

1271 Becket Drive Southeast, Monte Sano, Huntsville, Madison  
County, Alabama, United States, 35801

## 27 Floor 2 - WC



Dimensions: 3'11" x 5'10"  
Area: 21 sq. ft  
Counted as living area: Yes

Heated: Yes  
Finished: Yes  
Enclosed: Yes  
Contiguous: Yes  
Permitted: Yes  
Wet space: No  
Addition: No  
Conversion: No

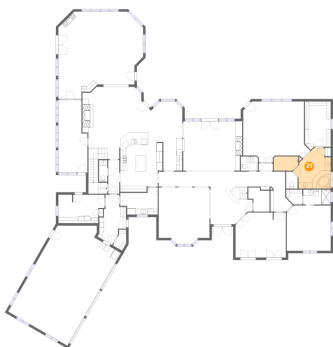
## 28 Floor 2 - Laundry



Dimensions: 12'10" x 9'3"  
Area: 95 sq. ft  
Counted as living area: Yes

Heated: Yes  
Finished: Yes  
Enclosed: Yes  
Contiguous: Yes  
Permitted: Yes  
Wet space: No  
Addition: No  
Conversion: No

## 29 Floor 2 - Primary Bath



Dimensions: 19'6" x 14'0"  
Area: 175 sq. ft  
Counted as living area: Yes

Heated: Yes  
Finished: Yes  
Enclosed: Yes  
Contiguous: Yes  
Permitted: Yes  
Wet space: Yes  
Addition: No  
Conversion: No



1271 Becket Drive Southeast, Monte Sano, Huntsville, Madison  
County, Alabama, United States, 35801

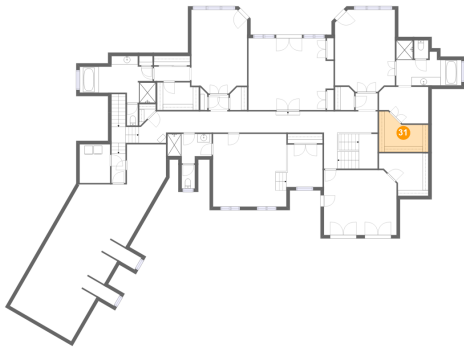
### 30 Floor 2 - Wet Bar



Dimensions: 6'6" x 13'1"  
Area: 85 sq. ft  
Counted as living area: Yes

Heated: Yes  
Finished: Yes  
Enclosed: Yes  
Contiguous: Yes  
Permitted: Yes  
Wet space: No  
Addition: No  
Conversion: No

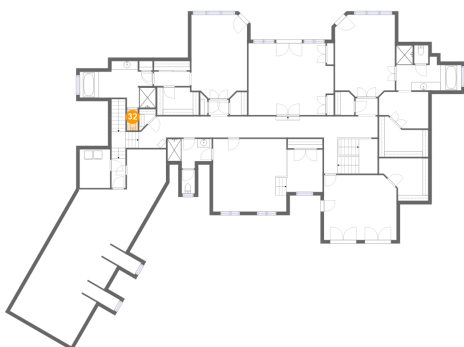
### 31 Floor 3 - W.I.C.



Dimensions: 11'8" x 9'7"  
Area: 87 sq. ft  
Counted as living area: Yes

Heated: Yes  
Finished: Yes  
Enclosed: Yes  
Contiguous: Yes  
Permitted: Yes  
Wet space: No  
Addition: No  
Conversion: No

### 32 Floor 3 - WC

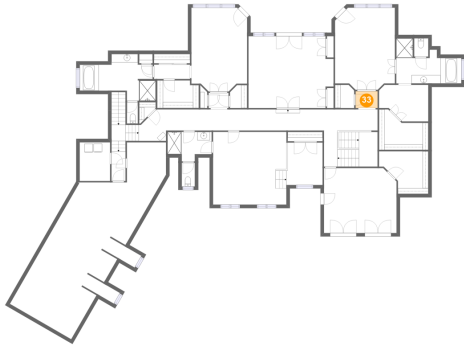


Dimensions: 2'7" x 5'1"  
Area: 13 sq. ft  
Counted as living area: Yes

Heated: Yes  
Finished: Yes  
Enclosed: Yes  
Contiguous: Yes  
Permitted: Yes  
Wet space: Yes  
Addition: No  
Conversion: No

1271 Becket Drive Southeast, Monte Sano, Huntsville, Madison County, Alabama, United States, 35801

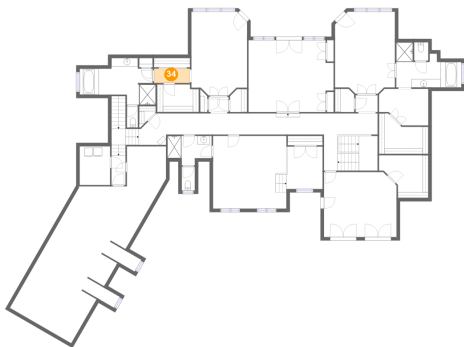
### 33 Floor 3 - Hall



Dimensions: 5'3" x 4'0"  
Area: 21 sq. ft  
Counted as living area: Yes

Heated: Yes  
Finished: Yes  
Enclosed: Yes  
Contiguous: Yes  
Permitted: Yes  
Wet space: No  
Addition: No  
Conversion: No

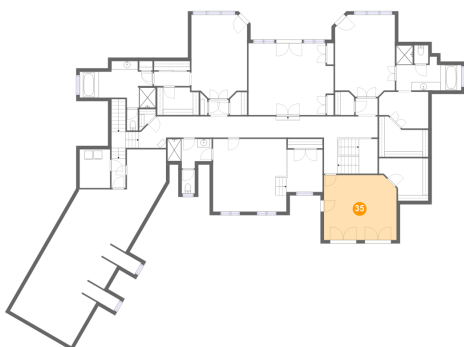
### 34 Floor 3 - Hall



Dimensions: 8'6" x 3'5"  
Area: 29 sq. ft  
Counted as living area: Yes

Heated: Yes  
Finished: Yes  
Enclosed: Yes  
Contiguous: Yes  
Permitted: Yes  
Wet space: No  
Addition: No  
Conversion: No

### 35 Floor 3 - Bedroom

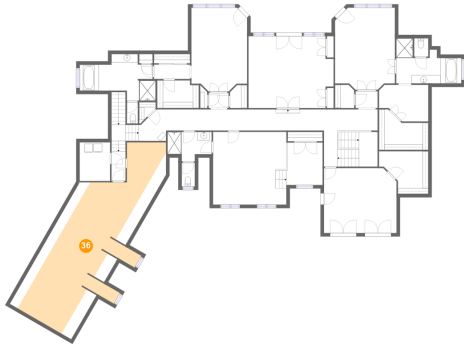


Dimensions: 17'3" x 15'5"  
Area: 260 sq. ft  
Counted as living area: Yes

Heated: Yes  
Finished: Yes  
Enclosed: Yes  
Contiguous: Yes  
Permitted: Yes  
Wet space: No  
Addition: No  
Conversion: No

1271 Becket Drive Southeast, Monte Sano, Huntsville, Madison County, Alabama, United States, 35801

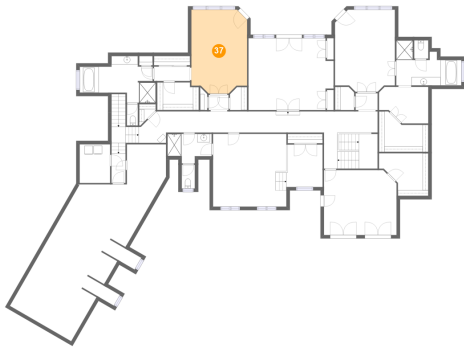
### 36 Floor 3 - Attic



Dimensions: 21'4" x 51'5"  
Area: 572 sq. ft  
Counted as living area: No

Heated: No  
Finished: No  
Enclosed: Yes  
Contiguous: Yes  
Permitted: Yes  
Wet space: No  
Addition: No  
Conversion: No

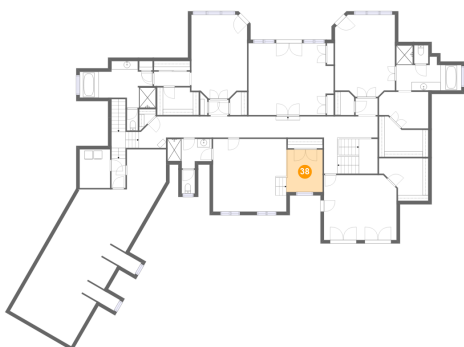
### 37 Floor 3 - Bedroom



Dimensions: 13'2" x 19'10"  
Area: 247 sq. ft  
Counted as living area: Yes

Heated: Yes  
Finished: Yes  
Enclosed: Yes  
Contiguous: Yes  
Permitted: Yes  
Wet space: No  
Addition: No  
Conversion: No

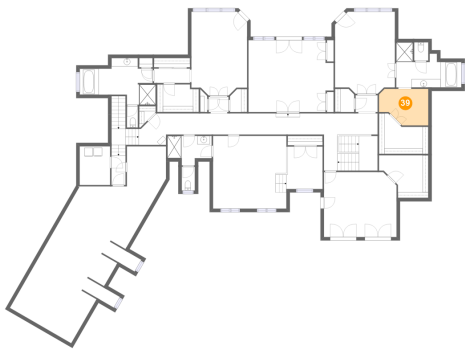
### 38 Floor 3 - Sitting Room



Dimensions: 8'7" x 10'1"  
Area: 86 sq. ft  
Counted as living area: Yes

Heated: Yes  
Finished: Yes  
Enclosed: Yes  
Contiguous: Yes  
Permitted: Yes  
Wet space: No  
Addition: No  
Conversion: No

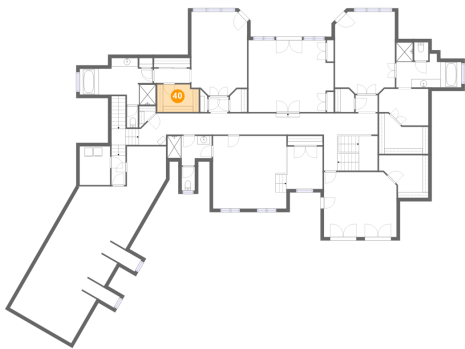
39 Floor 3 - Sitting Room



Dimensions: 11'8" x 8'8"  
Area: 88 sq. ft  
Counted as living area: Yes

Heated: Yes  
Finished: Yes  
Enclosed: Yes  
Contiguous: Yes  
Permitted: Yes  
Wet space: No  
Addition: No  
Conversion: No

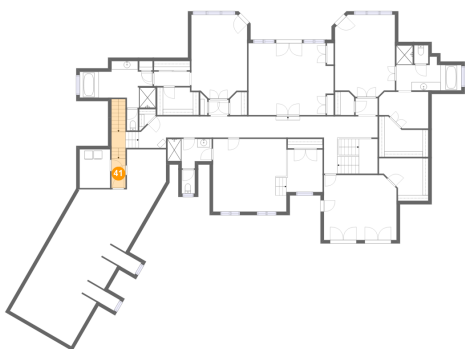
40 Floor 3 - W.I.C.



Dimensions: 9'11" x 6'7"  
Area: 62 sq. ft  
Counted as living area: Yes

Heated: Yes  
Finished: Yes  
Enclosed: Yes  
Contiguous: Yes  
Permitted: Yes  
Wet space: No  
Addition: No  
Conversion: No

41 Floor 3 - Hall

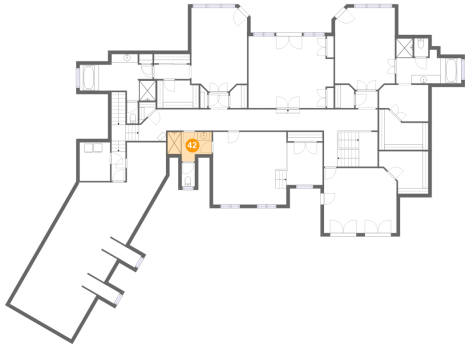


Dimensions: 3'4" x 7'0"  
Area: 70 sq. ft  
Counted as living area: Yes

Heated: Yes  
Finished: Yes  
Enclosed: Yes  
Contiguous: Yes  
Permitted: Yes  
Wet space: No  
Addition: No  
Conversion: No

1271 Becket Drive Southeast, Monte Sano, Huntsville, Madison  
County, Alabama, United States, 35801

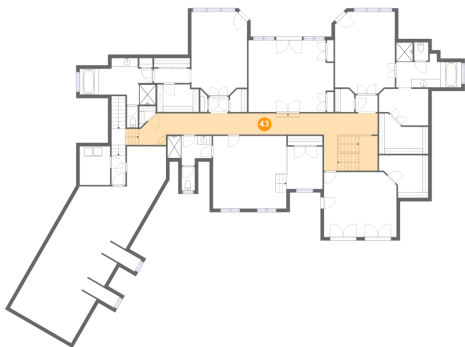
### 42 Floor 3 - Bath



Dimensions: 10'6" x 7'0"  
Area: 61 sq. ft  
Counted as living area: Yes

Heated: Yes  
Finished: Yes  
Enclosed: Yes  
Contiguous: Yes  
Permitted: Yes  
Wet space: Yes  
Addition: No  
Conversion: No

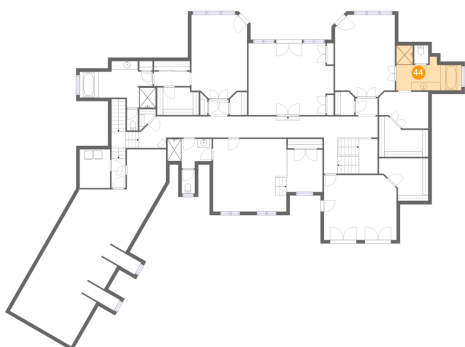
### 43 Floor 3 - Hall



Dimensions: 56'8" x 13'6"  
Area: 411 sq. ft  
Counted as living area: Yes

Heated: Yes  
Finished: Yes  
Enclosed: Yes  
Contiguous: Yes  
Permitted: Yes  
Wet space: No  
Addition: No  
Conversion: No

### 44 Floor 3 - Bath

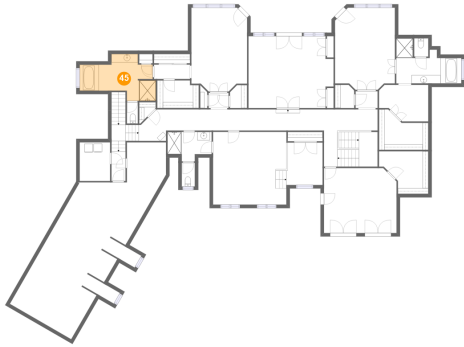


Dimensions: 15'5" x 10'8"  
Area: 115 sq. ft  
Counted as living area: Yes

Heated: Yes  
Finished: Yes  
Enclosed: Yes  
Contiguous: Yes  
Permitted: Yes  
Wet space: Yes  
Addition: No  
Conversion: No

1271 Becket Drive Southeast, Monte Sano, Huntsville, Madison County, Alabama, United States, 35801

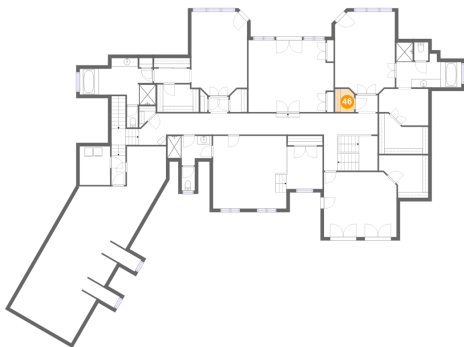
### 45 Floor 3 - Bath



Dimensions: 18'1" x 11'1"  
Area: 139 sq. ft  
Counted as living area: Yes

Heated: Yes  
Finished: Yes  
Enclosed: Yes  
Contiguous: Yes  
Permitted: Yes  
Wet space: Yes  
Addition: No  
Conversion: No

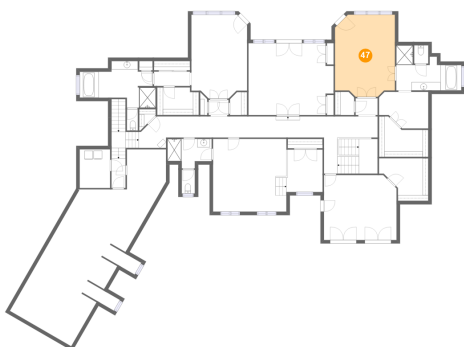
### 46 Floor 3 - W.I.C.



Dimensions: 4'7" x 5'6"  
Area: 24 sq. ft  
Counted as living area: Yes

Heated: Yes  
Finished: Yes  
Enclosed: Yes  
Contiguous: Yes  
Permitted: Yes  
Wet space: No  
Addition: No  
Conversion: No

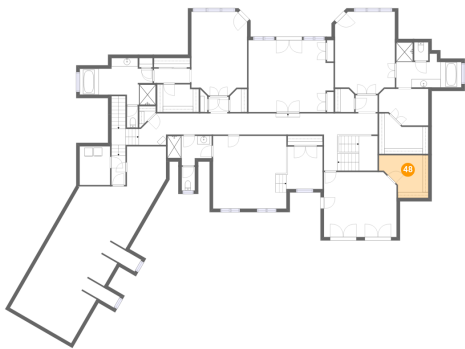
### 47 Floor 3 - Bedroom



Dimensions: 14'2" x 19'6"  
Area: 261 sq. ft  
Counted as living area: Yes

Heated: Yes  
Finished: Yes  
Enclosed: Yes  
Contiguous: Yes  
Permitted: Yes  
Wet space: No  
Addition: No  
Conversion: No

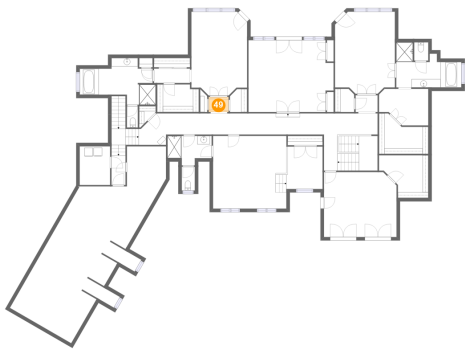
48 Floor 3 - W.I.C.



Dimensions: 11'8" x 10'1"  
Area: 94 sq. ft  
Counted as living area: Yes

Heated: Yes  
Finished: Yes  
Enclosed: Yes  
Contiguous: Yes  
Permitted: Yes  
Wet space: No  
Addition: No  
Conversion: No

49 Floor 3 - Hall



Dimensions: 4'9" x 3'7"  
Area: 17 sq. ft  
Counted as living area: Yes

Heated: Yes  
Finished: Yes  
Enclosed: Yes  
Contiguous: Yes  
Permitted: Yes  
Wet space: No  
Addition: No  
Conversion: No

50 Floor 3 - Laundry



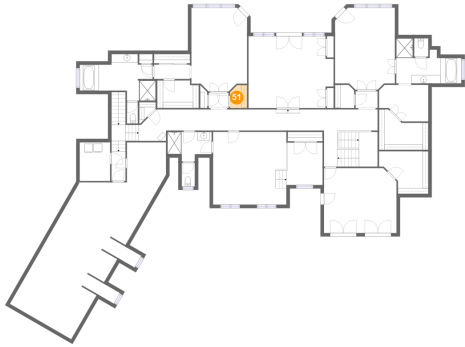
Dimensions: 7'3" x 9'2"  
Area: 66 sq. ft  
Counted as living area: Yes

Heated: Yes  
Finished: Yes  
Enclosed: Yes  
Contiguous: Yes  
Permitted: Yes  
Wet space: No  
Addition: No  
Conversion: No

## Home report

1271 Becket Drive Southeast, Monte Sano, Huntsville, Madison County, Alabama, United States, 35801

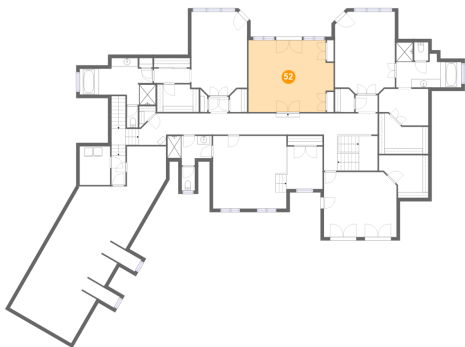
### 51 Floor 3 - W.I.C.



Dimensions: 4'1" x 5'5"  
Area: 21 sq. ft  
Counted as living area: Yes

Heated: Yes  
Finished: Yes  
Enclosed: Yes  
Contiguous: Yes  
Permitted: Yes  
Wet space: No  
Addition: No  
Conversion: No

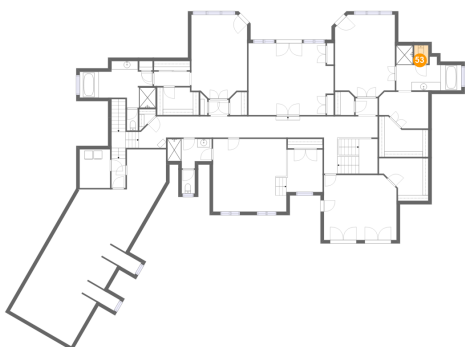
### 52 Floor 3 - Game Room



Dimensions: 20'2" x 17'0"  
Area: 324 sq. ft  
Counted as living area: Yes

Heated: Yes  
Finished: Yes  
Enclosed: Yes  
Contiguous: Yes  
Permitted: Yes  
Wet space: No  
Addition: No  
Conversion: No

### 53 Floor 3 - WC

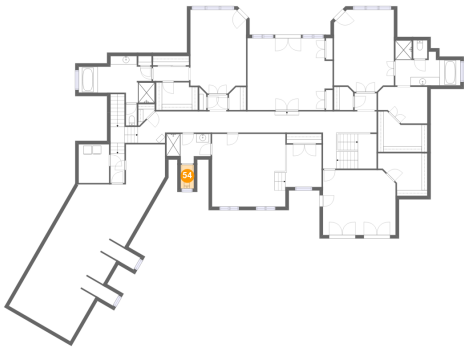


Dimensions: 3'4" x 4'4"  
Area: 14 sq. ft  
Counted as living area: Yes

Heated: Yes  
Finished: Yes  
Enclosed: Yes  
Contiguous: Yes  
Permitted: Yes  
Wet space: Yes  
Addition: No  
Conversion: No



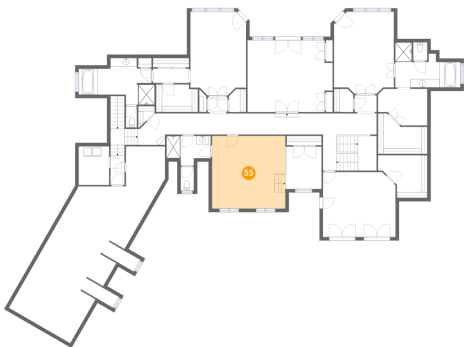
54 Floor 3 - WC



Dimensions: 3'1" x 5'7"  
Area: 17 sq. ft  
Counted as living area: Yes

Heated: Yes  
Finished: Yes  
Enclosed: Yes  
Contiguous: Yes  
Permitted: Yes  
Wet space: Yes  
Addition: No  
Conversion: No

55 Floor 3 - Bedroom



Dimensions: 17'5" x 17'3"  
Area: 300 sq. ft  
Counted as living area: Yes

Heated: Yes  
Finished: Yes  
Enclosed: Yes  
Contiguous: Yes  
Permitted: Yes  
Wet space: No  
Addition: No  
Conversion: No