

10116 13th St, Greeley, CO 80634, Greeley, CO, United States



Property Summary

 **1** garages  **3** bedrooms  **2** bathrooms  **1** half baths

 **2** floors  **1,531** Gross Living Area sqft  **2,359** total sqft

**10116 13th St, Greeley, CO
80634, Greeley, CO, United States**



Room Dimensions

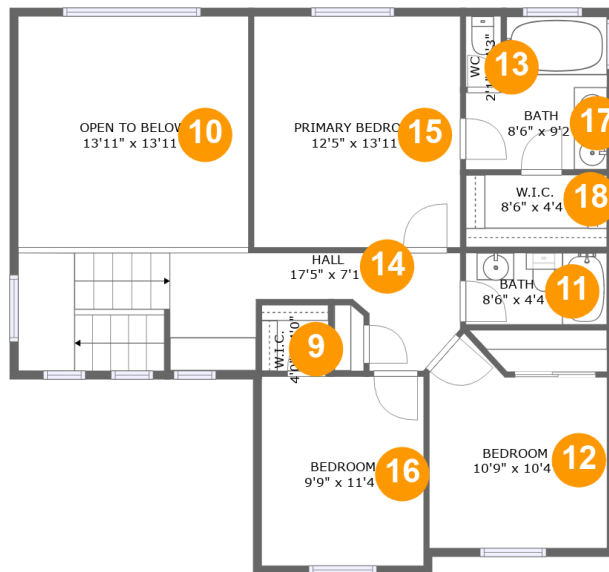
Floor 1

Total sqft: 1298

Living area: 682

#	Room name	Dimensions	Area (sqft)	Counted as Living Area
1	Kitchen	9'11" x 12'10"	120 sq. ft	Yes
2	Garage	20'8" x 21'9"	417 sq. ft	No
3	Dining Area	10'4" x 9'8"	100 sq. ft	Yes
4	Foyer	5'2" x 7'5"	101 sq. ft	Yes
5	Laundry	4'11" x 6'3"	31 sq. ft	Yes
6	Living Room	15'3" x 13'11"	209 sq. ft	Yes
7	Deck	11'8" x 13'4"	156 sq. ft	No
8	Wc	4'4" x 5'2"	23 sq. ft	Yes

**10116 13th St, Greeley, CO
80634, Greeley, CO, United States**



Room Dimensions

Floor 2

Total sqft: 1061

Living area: 849

#	Room name	Dimensions	Area (sqft)	Counted as Living Area
9	W.i.c.	4'0" x 4'0"	16 sq. ft	Yes
10	Open To Below	13'11" x 13'11"	198 sq. ft	No
11	Bath	8'6" x 4'4"	37 sq. ft	Yes
12	Bedroom	10'9" x 10'4"	117 sq. ft	Yes
13	Wc	2'1" x 4'3"	9 sq. ft	Yes
14	Hall	17'5" x 7'1"	156 sq. ft	Yes
15	Primary Bedroom	12'5" x 13'11"	173 sq. ft	Yes
16	Bedroom	9'9" x 11'4"	111 sq. ft	Yes
17	Bath	8'6" x 9'2"	67 sq. ft	Yes
18	W.i.c.	8'6" x 4'4"	37 sq. ft	Yes

**10116 13th St, Greeley, CO
80634, Greeley, CO, United States**

1 Floor 1 - Kitchen



Dimensions: 9'11" x 12'10"
Area: 120 sq. ft
Counted as Living Area:
Yes

Heated: Yes
Finished: Yes
Enclosed: Yes
Contiguous:
Yes
Permitted: Yes
Wet Space: No
Addition: No
Conversion: No

2 Floor 1 - Garage

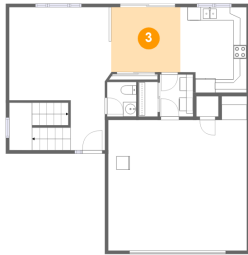


Dimensions: 20'8" x 21'9"
Area: 417 sq. ft
Counted as Living Area: No

Heated: No
Finished: No
Enclosed: Yes
Contiguous: Yes
Permitted: Yes
Wet Space: No
Addition: No
Conversion: No

**10116 13th St, Greeley, CO
80634, Greeley, CO, United States**

3 Floor 1 - Dining Area



Dimensions: 10'4" x 9'8"
Area: 100 sq. ft
Counted as Living Area:
Yes

Heated: Yes
Finished: Yes
Enclosed: Yes
Contiguous:
Yes
Permitted: Yes
Wet Space: No
Addition: No
Conversion: No

4 Floor 1 - Foyer



Dimensions: 5'2" x 7'5"
Area: 101 sq. ft
Counted as Living Area:
Yes

Heated: Yes
Finished: Yes
Enclosed: Yes
Contiguous:
Yes
Permitted: Yes
Wet Space: No
Addition: No
Conversion: No

5 Floor 1 - Laundry

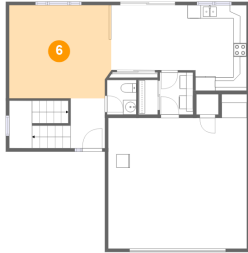


Dimensions: 4'11" x 6'3"
Area: 31 sq. ft
Counted as Living Area:
Yes

Heated: Yes
Finished: Yes
Enclosed: Yes
Contiguous:
Yes
Permitted: Yes
Wet Space: No
Addition: No
Conversion: No

**10116 13th St, Greeley, CO
80634, Greeley, CO, United States**

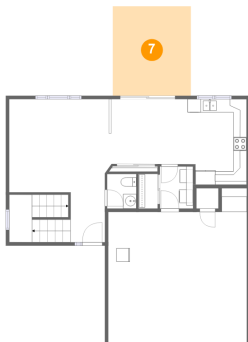
6 Floor 1 - Living Room



Dimensions: 15'3" x 13'11"
Area: 209 sq. ft
Counted as Living Area:
Yes

Heated: Yes
Finished: Yes
Enclosed: Yes
Contiguous:
Yes
Permitted: Yes
Wet Space: No
Addition: No
Conversion: No

7 Floor 1 - Deck



Dimensions: 11'8" x 13'4"
Area: 156 sq. ft
Counted as Living Area: No

Heated: No
Finished: Yes
Enclosed: No
Contiguous: Yes
Permitted: Yes
Wet Space: No
Addition: No
Conversion: No

8 Floor 1 - Wc

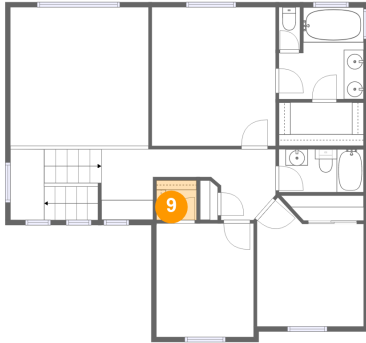


Dimensions: 4'4" x 5'2"
Area: 23 sq. ft
Counted as Living Area:
Yes

Heated: Yes
Finished: Yes
Enclosed: Yes
Contiguous:
Yes
Permitted: Yes
Wet Space: Yes
Addition: No
Conversion: No

**10116 13th St, Greeley, CO
80634, Greeley, CO, United States**

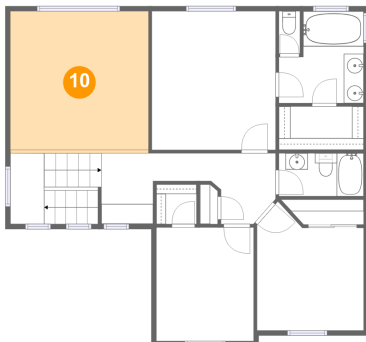
9 Floor 2 - W.i.c.



Dimensions: 4'0" x 4'0"
Area: 16 sq. ft
Counted as Living Area:
Yes

Heated: Yes
Finished: Yes
Enclosed: Yes
Contiguous:
Yes
Permitted: Yes
Wet Space: No
Addition: No
Conversion: No

10 Floor 2 - Open To Below



Dimensions: 13'11" x 13'11"
Area: 198 sq. ft
Counted as Living Area: No

Heated: No
Finished: No
Enclosed: No
Contiguous: Yes
Permitted: No
Wet Space: No
Addition: No
Conversion: No

11 Floor 2 - Bath

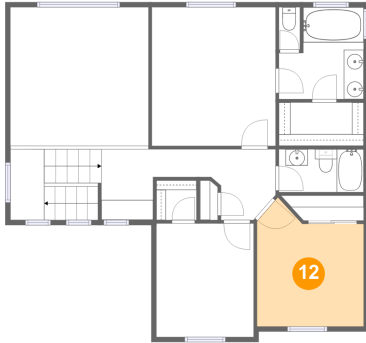


Dimensions: 8'6" x 4'4"
Area: 37 sq. ft
Counted as Living Area:
Yes

Heated: Yes
Finished: Yes
Enclosed: Yes
Contiguous:
Yes
Permitted: Yes
Wet Space: Yes
Addition: No
Conversion: No

**10116 13th St, Greeley, CO
80634, Greeley, CO, United States**

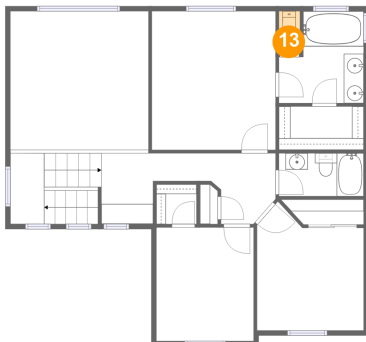
12 Floor 2 - Bedroom



Dimensions: 10'9" x 10'4"
Area: 117 sq. ft
Counted as Living Area:
Yes

Heated: Yes
Finished: Yes
Enclosed: Yes
Contiguous:
Yes
Permitted: Yes
Wet Space: No
Addition: No
Conversion: No

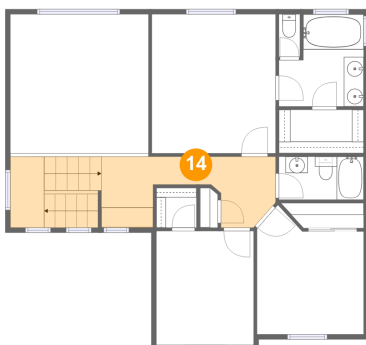
13 Floor 2 - Wc



Dimensions: 2'1" x 4'3"
Area: 9 sq. ft
Counted as Living Area:
Yes

Heated: Yes
Finished: Yes
Enclosed: Yes
Contiguous:
Yes
Permitted: Yes
Wet Space: Yes
Addition: No
Conversion: No

14 Floor 2 - Hall

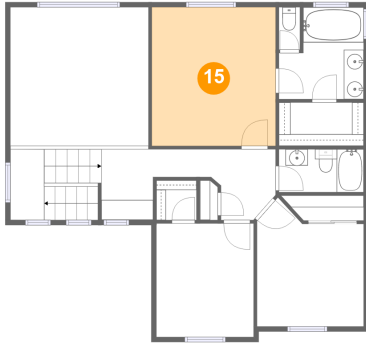


Dimensions: 17'5" x 7'1"
Area: 156 sq. ft
Counted as Living Area:
Yes

Heated: Yes
Finished: Yes
Enclosed: Yes
Contiguous:
Yes
Permitted: Yes
Wet Space: No
Addition: No
Conversion: No

**10116 13th St, Greeley, CO
80634, Greeley, CO, United States**

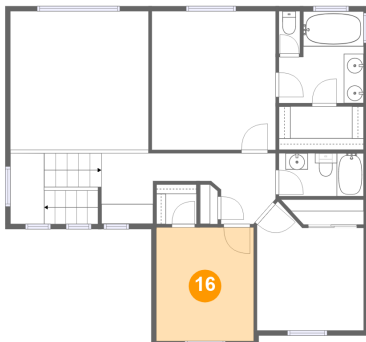
15 Floor 2 - Primary Bedroom



Dimensions: 12'5" x 13'11"
Area: 173 sq. ft
Counted as Living Area:
Yes

Heated: Yes
Finished: Yes
Enclosed: Yes
Contiguous:
Yes
Permitted: Yes
Wet Space: No
Addition: No
Conversion: No

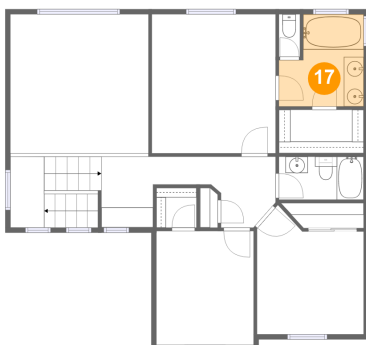
16 Floor 2 - Bedroom



Dimensions: 9'9" x 11'4"
Area: 111 sq. ft
Counted as Living Area:
Yes

Heated: Yes
Finished: Yes
Enclosed: Yes
Contiguous:
Yes
Permitted: Yes
Wet Space: No
Addition: No
Conversion: No

17 Floor 2 - Bath

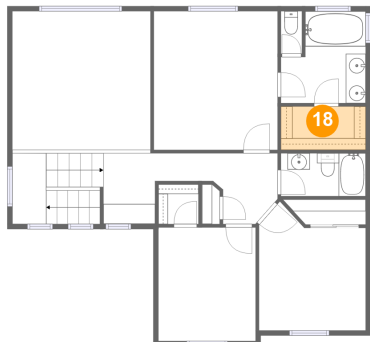


Dimensions: 8'6" x 9'2"
Area: 67 sq. ft
Counted as Living Area:
Yes

Heated: Yes
Finished: Yes
Enclosed: Yes
Contiguous:
Yes
Permitted: Yes
Wet Space: Yes
Addition: No
Conversion: No

**10116 13th St, Greeley, CO
80634, Greeley, CO, United States**

18 Floor 2 - W.i.c.



Dimensions: 8'6" x 4'4"
Area: 37 sq. ft
Counted as Living Area:
Yes

Heated: Yes
Finished: Yes
Enclosed: Yes
Contiguous:
Yes
Permitted: Yes
Wet Space: No
Addition: No
Conversion: No