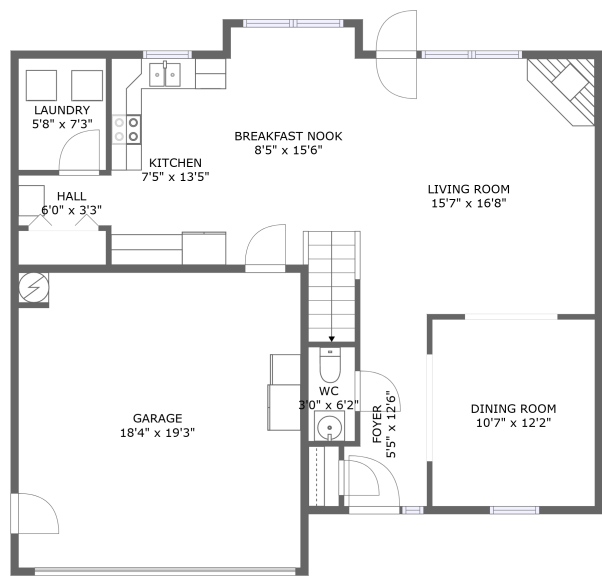
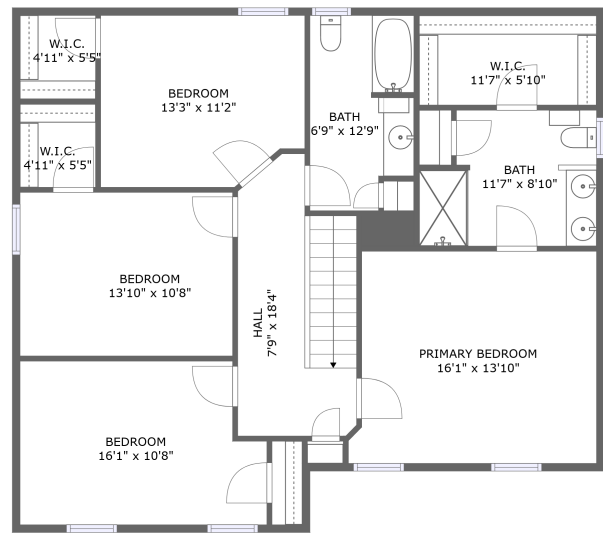


Home report

4004 Brayden Drive, High Point, Guilford County, North Carolina,
United States, 27265



FLOOR 1



FLOOR 2

Total Area: 1982 sq. ft
Floor 1: 814 sq. ft, Floor 2: 1168 sq. ft
Excluded: Garage 353 sq. ft, Walls: 163 sq. ft

Property summary

 **2** Floors

 **4** Bedrooms

 **2** Bathrooms

Home report

**4004 Brayden Drive, High Point, Guilford County, North Carolina,
United States, 27265**



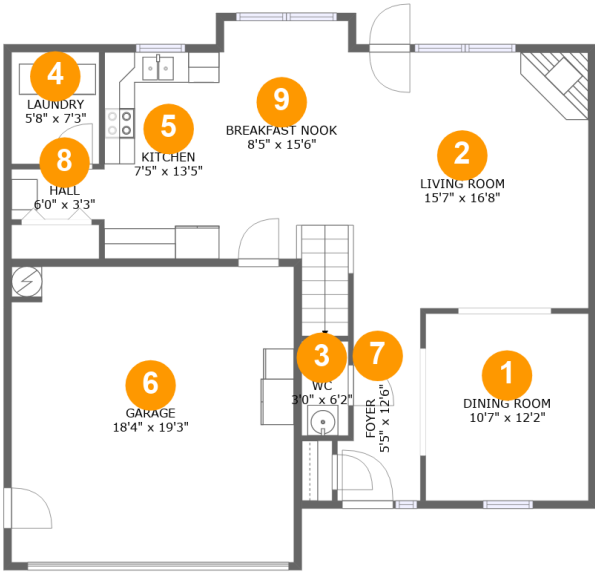
1
Half baths



1
Garages

Home report

4004 Brayden Drive, High Point, Guilford County, North Carolina,
United States, 27265



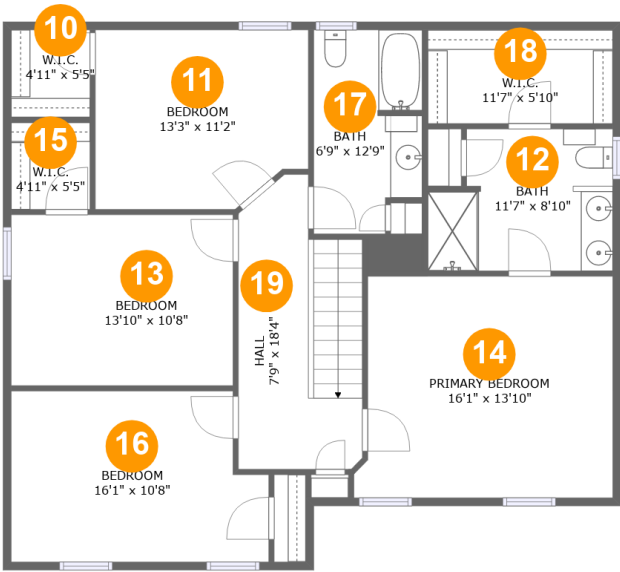
Room dimensions

Floor 1 Total:814sqft Excluded: 353sqft

#		Max Dimensions	sqft	Included
1	Dining Room	10'7" x 12'2"	129 sq. ft	Yes
2	Living Room	15'7" x 16'8"	260 sq. ft	Yes
3	WC	3'0" x 6'2"	19 sq. ft	Yes
4	Laundry	5'8" x 7'3"	42 sq. ft	Yes
5	Kitchen	7'5" x 13'5"	100 sq. ft	Yes
6	Garage	18'4" x 19'3"	353 sq. ft	No
7	Foyer	5'5" x 12'6"	59 sq. ft	Yes
8	Hall	6'0" x 3'3"	20 sq. ft	Yes
9	Breakfast Nook	8'5" x 15'6"	145 sq. ft	Yes

Home report

4004 Brayden Drive, High Point, Guilford County, North Carolina,
United States, 27265



Room dimensions

Floor 2 Total:1168sqft Excluded: 0sqft

#		Max Dimensions	sqft	Included
10	W.I.C.	4'11" x 5'5"	27 sq. ft	Yes
11	Bedroom	13'3" x 11'2"	141 sq. ft	Yes
12	Bath	11'7" x 8'10"	92 sq. ft	Yes
13	Bedroom	13'10" x 10'8"	147 sq. ft	Yes
14	Primary Bedroom	16'1" x 13'10"	213 sq. ft	Yes
15	W.I.C.	4'11" x 5'5"	27 sq. ft	Yes
16	Bedroom	16'1" x 10'8"	160 sq. ft	Yes
17	Bath	6'9" x 12'9"	80 sq. ft	Yes
18	W.I.C.	11'7" x 5'10"	67 sq. ft	Yes
19	Hall	7'9" x 18'4"	125 sq. ft	Yes

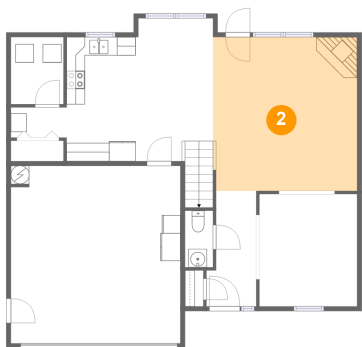
1 Floor 1 - Dining Room



Max Dimensions: 10'7" x 12'2"
Calculated Area: 129 sq. ft
Included: Yes

Heated: Yes
Finished: Yes
Enclosed: Yes
Contiguous: Yes
Permitted: Yes
Wet space: No
Addition: No
Conversion: No

2 Floor 1 - Living Room



Max Dimensions: 15'7" x 16'8"
Calculated Area: 260 sq. ft
Included: Yes

Heated: Yes
Finished: Yes
Enclosed: Yes
Contiguous: Yes
Permitted: Yes
Wet space: No
Addition: No
Conversion: No

4004 Brayden Drive, High Point, Guilford County, North Carolina,
United States, 27265

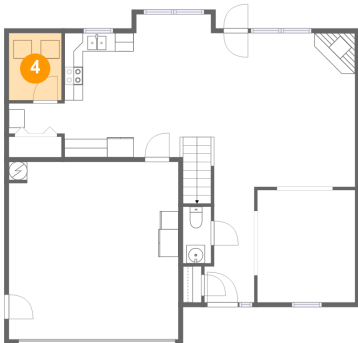
3 Floor 1 - WC



Max Dimensions: 3'0" x 6'2"
Calculated Area: 19 sq. ft
Included: Yes

Heated: Yes
Finished: Yes
Enclosed: Yes
Contiguous: Yes
Permitted: Yes
Wet space: Yes
Addition: No
Conversion: No

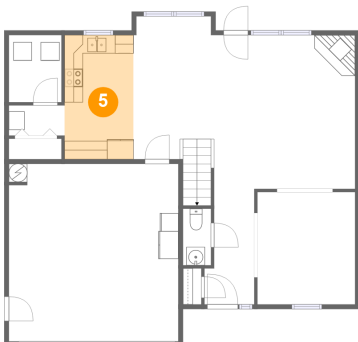
4 Floor 1 - Laundry



Max Dimensions: 5'8" x 7'3"
Calculated Area: 42 sq. ft
Included: Yes

Heated: Yes
Finished: Yes
Enclosed: Yes
Contiguous: Yes
Permitted: Yes
Wet space: No
Addition: No
Conversion: No

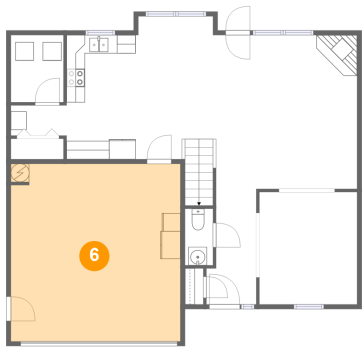
5 Floor 1 - Kitchen



Max Dimensions: 7'5" x
13'5"
Calculated Area: 100 sq. ft
Included: Yes

Heated: Yes
Finished: Yes
Enclosed: Yes
Contiguous:
Yes
Permitted: Yes
Wet space: No
Addition: No
Conversion: No

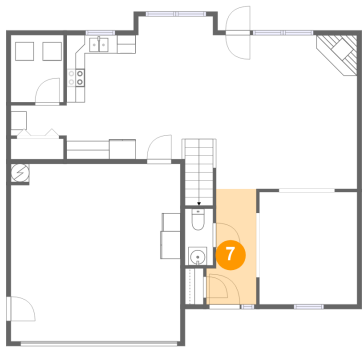
6 Floor 1 - Garage



Max Dimensions: 18'4" x 19'3"
Calculated Area: 353 sq. ft
Included: No

Heated: No
Finished: No
Enclosed: Yes
Contiguous: Yes
Permitted: Yes
Wet space: No
Addition: No
Conversion: No

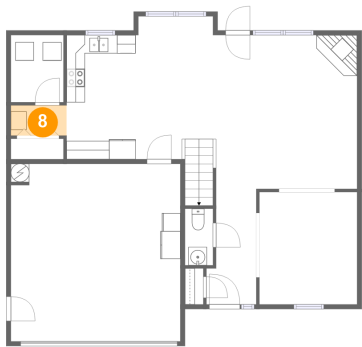
7 Floor 1 - Foyer



Max Dimensions: 5'5" x 12'6"
Calculated Area: 59 sq. ft
Included: Yes

Heated: Yes
Finished: Yes
Enclosed: Yes
Contiguous: Yes
Permitted: Yes
Wet space: No
Addition: No
Conversion: No

8 Floor 1 - Hall

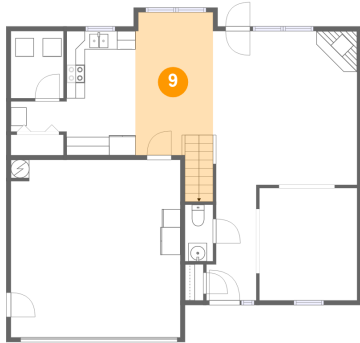


Max Dimensions: 6'0" x 3'3"
Calculated Area: 20 sq. ft
Included: Yes

Heated: Yes
Finished: Yes
Enclosed: Yes
Contiguous: Yes
Permitted: Yes
Wet space: No
Addition: No
Conversion: No

4004 Brayden Drive, High Point, Guilford County, North Carolina,
United States, 27265

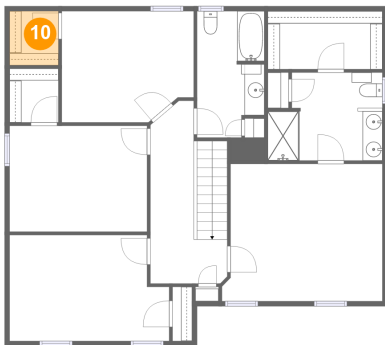
9 Floor 1 - Breakfast Nook



Max Dimensions: 8'5" x 15'6"
Calculated Area: 145 sq. ft
Included: Yes

Heated: Yes
Finished: Yes
Enclosed: Yes
Contiguous: Yes
Permitted: Yes
Wet space: No
Addition: No
Conversion: No

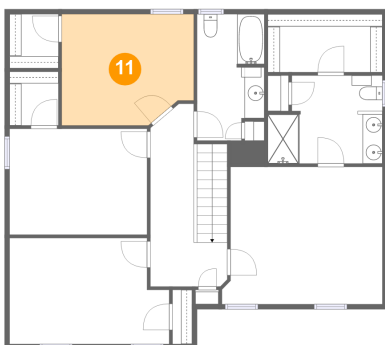
10 Floor 2 - W.I.C.



Max Dimensions: 4'11" x 5'5"
Calculated Area: 27 sq. ft
Included: Yes

Heated: Yes
Finished: Yes
Enclosed: Yes
Contiguous: Yes
Permitted: Yes
Wet space: No
Addition: No
Conversion: No

11 Floor 2 - Bedroom



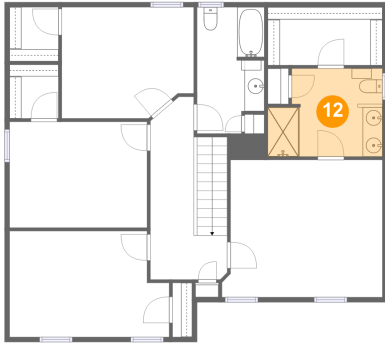
Max Dimensions: 13'3" x 11'2"
Calculated Area: 141 sq. ft
Included: Yes

Heated: Yes
Finished: Yes
Enclosed: Yes
Contiguous: Yes
Permitted: Yes
Wet space: No
Addition: No
Conversion: No

Home report

4004 Brayden Drive, High Point, Guilford County, North Carolina,
United States, 27265

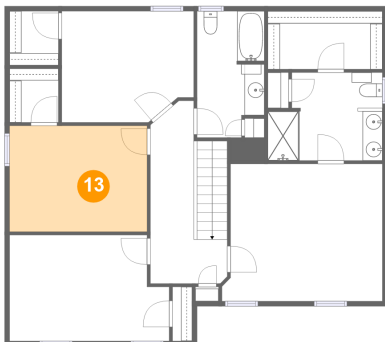
12 Floor 2 - Bath



Max Dimensions: 11'7" x 8'10"
Calculated Area: 92 sq. ft
Included: Yes

Heated: Yes
Finished: Yes
Enclosed: Yes
Contiguous: Yes
Permitted: Yes
Wet space: Yes
Addition: No
Conversion: No

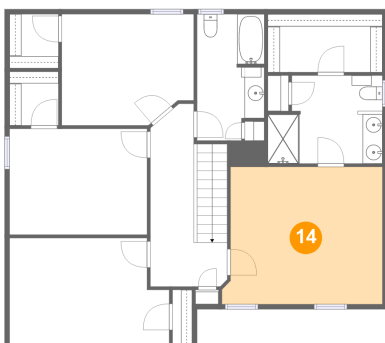
13 Floor 2 - Bedroom



Max Dimensions: 13'10" x 10'8"
Calculated Area: 147 sq. ft
Included: Yes

Heated: Yes
Finished: Yes
Enclosed: Yes
Contiguous: Yes
Permitted: Yes
Wet space: No
Addition: No
Conversion: No

14 Floor 2 - Primary Bedroom

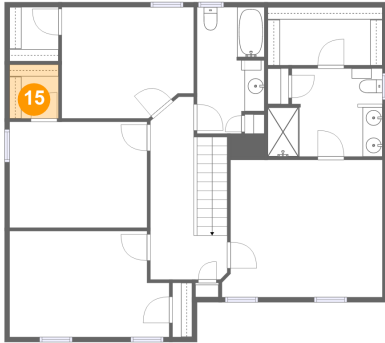


Max Dimensions: 16'1" x 13'10"
Calculated Area: 213 sq. ft
Included: Yes

Heated: Yes
Finished: Yes
Enclosed: Yes
Contiguous: Yes
Permitted: Yes
Wet space: No
Addition: No
Conversion: No

4004 Brayden Drive, High Point, Guilford County, North Carolina,
United States, 27265

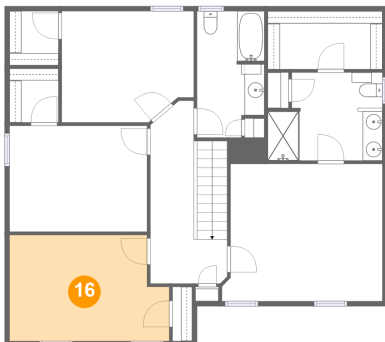
15 Floor 2 - W.I.C.



Max Dimensions: 4'11" x 5'5"
Calculated Area: 27 sq. ft
Included: Yes

Heated: Yes
Finished: Yes
Enclosed: Yes
Contiguous: Yes
Permitted: Yes
Wet space: No
Addition: No
Conversion: No

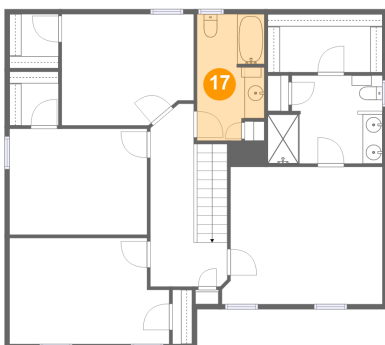
16 Floor 2 - Bedroom



Max Dimensions: 16'1" x 10'8"
Calculated Area: 160 sq. ft
Included: Yes

Heated: Yes
Finished: Yes
Enclosed: Yes
Contiguous: Yes
Permitted: Yes
Wet space: No
Addition: No
Conversion: No

17 Floor 2 - Bath



Max Dimensions: 6'9" x 12'9"
Calculated Area: 80 sq. ft
Included: Yes

Heated: Yes
Finished: Yes
Enclosed: Yes
Contiguous: Yes
Permitted: Yes
Wet space: Yes
Addition: No
Conversion: No

18 Floor 2 - W.I.C.



Max Dimensions: 11'7" x 5'10"
Calculated Area: 67 sq. ft
Included: Yes

Heated: Yes
Finished: Yes
Enclosed: Yes
Contiguous: Yes
Permitted: Yes
Wet space: No
Addition: No
Conversion: No

19 Floor 2 - Hall



Max Dimensions: 7'9" x 18'4"
Calculated Area: 125 sq. ft
Included: Yes

Heated: Yes
Finished: Yes
Enclosed: Yes
Contiguous: Yes
Permitted: Yes
Wet space: No
Addition: No
Conversion: No