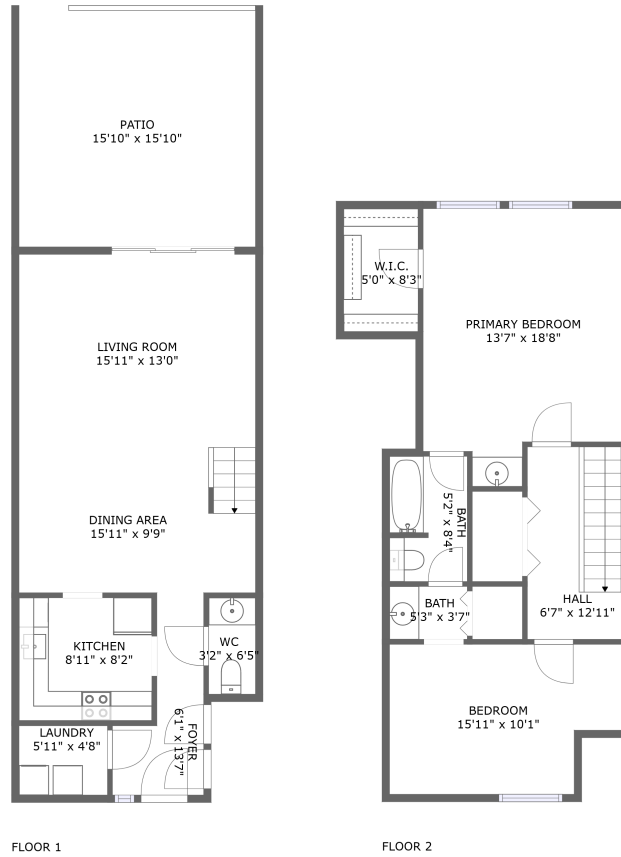


# 5832 16th Lane South, Greater Pinellas Point, St. Petersburg, Pinellas County, Florida, United



## Property Summary

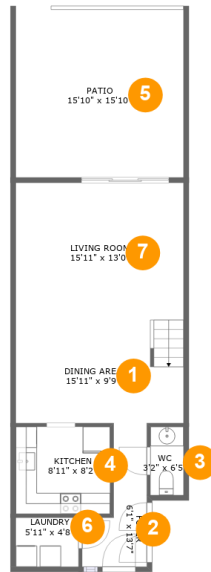
 **0** garages     **2** bedrooms     **1** bathrooms     **1** half baths

 **2** floors

 **1,255** Gross Living Area sqft

 **1,507** total sqft

# 5832 16th Lane South, Greater Pinellas Point, St. Petersburg, Pinellas County, Florida, United



## Room Dimensions

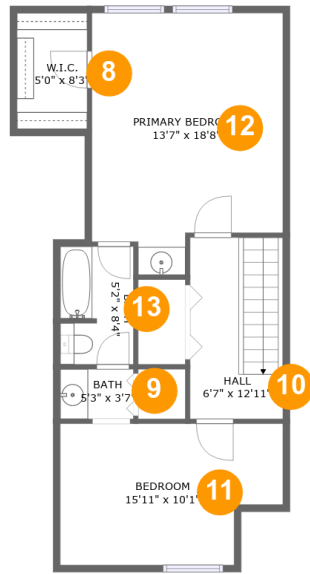
Floor 1

Total sqft: 841

Living area: 589

#	Room name	Dimensions	Area (sqft)	Counted as Living Area
1	Dining Area	15'11" x 9'9"	155 sq. ft	Yes
2	Foyer	6'1" x 13'7"	57 sq. ft	Yes
3	Wc	3'2" x 6'5"	20 sq. ft	Yes
4	Kitchen	8'11" x 8'2"	74 sq. ft	Yes
5	Patio	15'10" x 15'10"	252 sq. ft	No
6	Laundry	5'11" x 4'8"	28 sq. ft	Yes
7	Living Room	15'11" x 13'0"	206 sq. ft	Yes

**5832 16th Lane South, Greater Pinellas Point, St. Petersburg, Pinellas County, Florida, United**



**Room Dimensions**

**Floor 2**

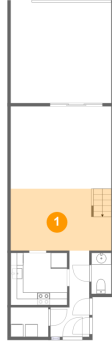
**Total sqft: 666**

**Living area: 666**

#	Room name	Dimensions	Area (sqft)	Counted as Living Area
8	W.i.c.	5'0" x 8'3"	41 sq. ft	Yes
9	Bath	5'3" x 3'7"	19 sq. ft	Yes
10	Hall	6'7" x 12'11"	86 sq. ft	Yes
11	Bedroom	15'11" x 10'1"	145 sq. ft	Yes
12	Primary Bedroom	13'7" x 18'8"	226 sq. ft	Yes
13	Bath	5'2" x 8'4"	43 sq. ft	Yes

# 5832 16th Lane South, Greater Pinellas Point, St. Petersburg, Pinellas County, Florida, United

## 1 Floor 1 - Dining Area



Dimensions: 15'11" x 9'9"  
Area: 155 sq. ft  
Counted as Living Area:  
Yes

Heated: Yes  
Finished: Yes  
Enclosed: Yes  
Contiguous:  
Yes  
Permitted: Yes  
Wet Space: No  
Addition: No  
Conversion: No

## 2 Floor 1 - Foyer



Dimensions: 6'1" x 13'7"  
Area: 57 sq. ft  
Counted as Living Area:  
Yes

Heated: Yes  
Finished: Yes  
Enclosed: Yes  
Contiguous:  
Yes  
Permitted: Yes  
Wet Space: No  
Addition: No  
Conversion: No

**5832 16th Lane South, Greater Pinellas Point, St.  
Petersburg, Pinellas County, Florida, United****3 Floor 1 - Wc**

Dimensions: 3'2" x 6'5"  
Area: 20 sq. ft  
Counted as Living Area:  
Yes

Heated: Yes  
Finished: Yes  
Enclosed: Yes  
Contiguous:  
Yes  
Permitted: Yes  
Wet Space: Yes  
Addition: No  
Conversion: No

**4 Floor 1 - Kitchen**

Dimensions: 8'11" x 8'2"  
Area: 74 sq. ft  
Counted as Living Area:  
Yes

Heated: Yes  
Finished: Yes  
Enclosed: Yes  
Contiguous:  
Yes  
Permitted: Yes  
Wet Space: No  
Addition: No  
Conversion: No

**5 Floor 1 - Patio**

Dimensions: 15'10" x 15'10"  
Area: 252 sq. ft  
Counted as Living Area: No

Heated: No  
Finished: Yes  
Enclosed: No  
Contiguous: Yes  
Permitted: Yes  
Wet Space: No  
Addition: No  
Conversion: No

# 5832 16th Lane South, Greater Pinellas Point, St. Petersburg, Pinellas County, Florida, United

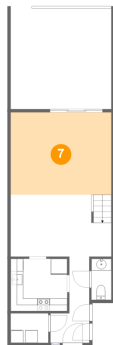
## 6 Floor 1 - Laundry



Dimensions: 5'11" x 4'8"  
Area: 28 sq. ft  
Counted as Living Area:  
Yes

Heated: Yes  
Finished: Yes  
Enclosed: Yes  
Contiguous:  
Yes  
Permitted: Yes  
Wet Space: No  
Addition: No  
Conversion: No

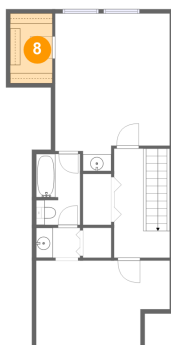
## 7 Floor 1 - Living Room



Dimensions: 15'11" x 13'0"  
Area: 206 sq. ft  
Counted as Living Area:  
Yes

Heated: Yes  
Finished: Yes  
Enclosed: Yes  
Contiguous:  
Yes  
Permitted: Yes  
Wet Space: No  
Addition: No  
Conversion: No

## 8 Floor 2 - W.i.c.



Dimensions: 5'0" x 8'3"  
Area: 41 sq. ft  
Counted as Living Area:  
Yes

Heated: Yes  
Finished: Yes  
Enclosed: Yes  
Contiguous:  
Yes  
Permitted: Yes  
Wet Space: No  
Addition: No  
Conversion: No

# 5832 16th Lane South, Greater Pinellas Point, St. Petersburg, Pinellas County, Florida, United

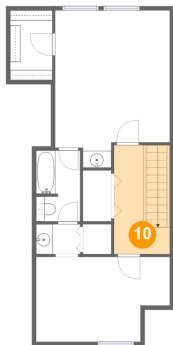
## 9 Floor 2 - Bath



Dimensions: 5'3" x 3'7"  
Area: 19 sq. ft  
Counted as Living Area:  
Yes

Heated: Yes  
Finished: Yes  
Enclosed: Yes  
Contiguous:  
Yes  
Permitted: Yes  
Wet Space: Yes  
Addition: No  
Conversion: No

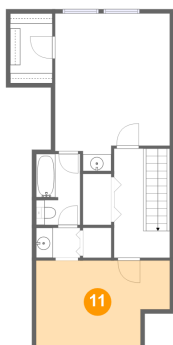
## 10 Floor 2 - Hall



Dimensions: 6'7" x 12'11"  
Area: 86 sq. ft  
Counted as Living Area:  
Yes

Heated: Yes  
Finished: Yes  
Enclosed: Yes  
Contiguous:  
Yes  
Permitted: Yes  
Wet Space: No  
Addition: No  
Conversion: No

## 11 Floor 2 - Bedroom



Dimensions: 15'11" x 10'1"  
Area: 145 sq. ft  
Counted as Living Area:  
Yes

Heated: Yes  
Finished: Yes  
Enclosed: Yes  
Contiguous:  
Yes  
Permitted: Yes  
Wet Space: No  
Addition: No  
Conversion: No

# 5832 16th Lane South, Greater Pinellas Point, St. Petersburg, Pinellas County, Florida, United

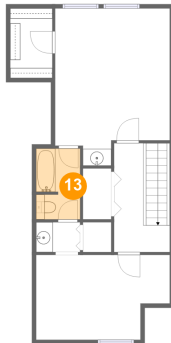
## 12 Floor 2 - Primary Bedroom



Dimensions: 13'7" x 18'8"  
Area: 226 sq. ft  
Counted as Living Area:  
Yes

Heated: Yes  
Finished: Yes  
Enclosed: Yes  
Contiguous:  
Yes  
Permitted: Yes  
Wet Space: No  
Addition: No  
Conversion: No

## 13 Floor 2 - Bath



Dimensions: 5'2" x 8'4"  
Area: 43 sq. ft  
Counted as Living Area:  
Yes

Heated: Yes  
Finished: Yes  
Enclosed: Yes  
Contiguous:  
Yes  
Permitted: Yes  
Wet Space: Yes  
Addition: No  
Conversion: No