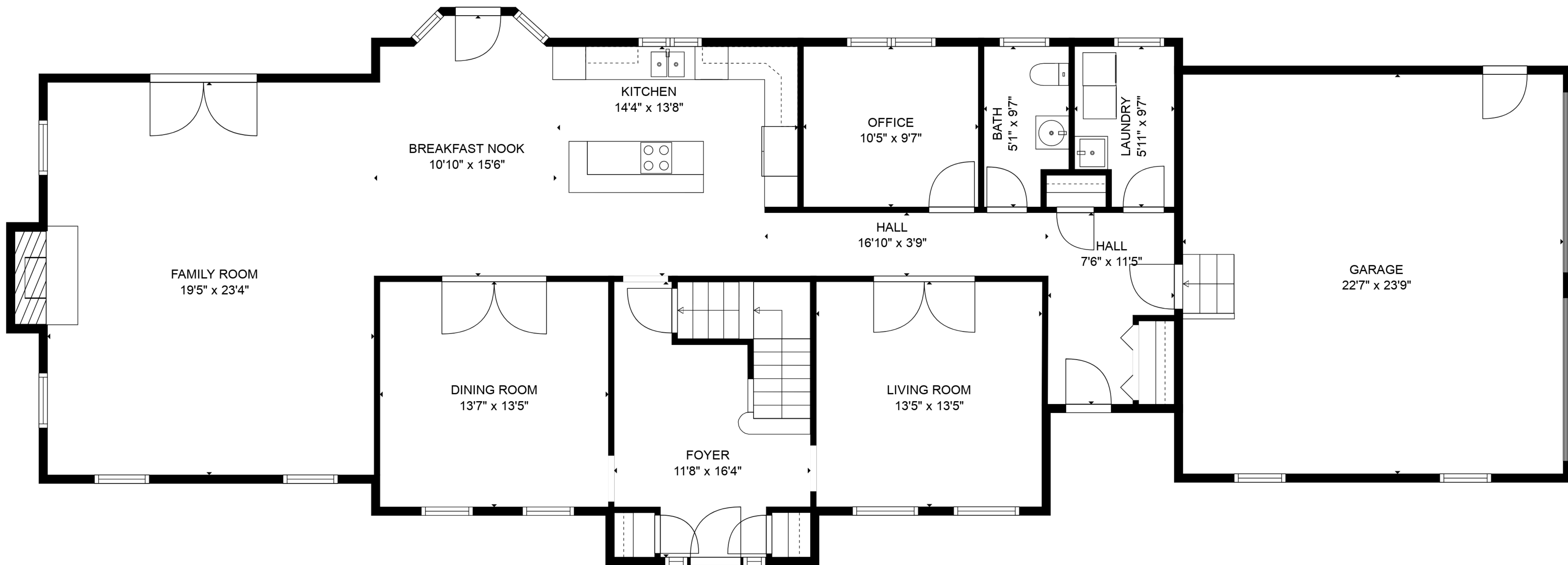


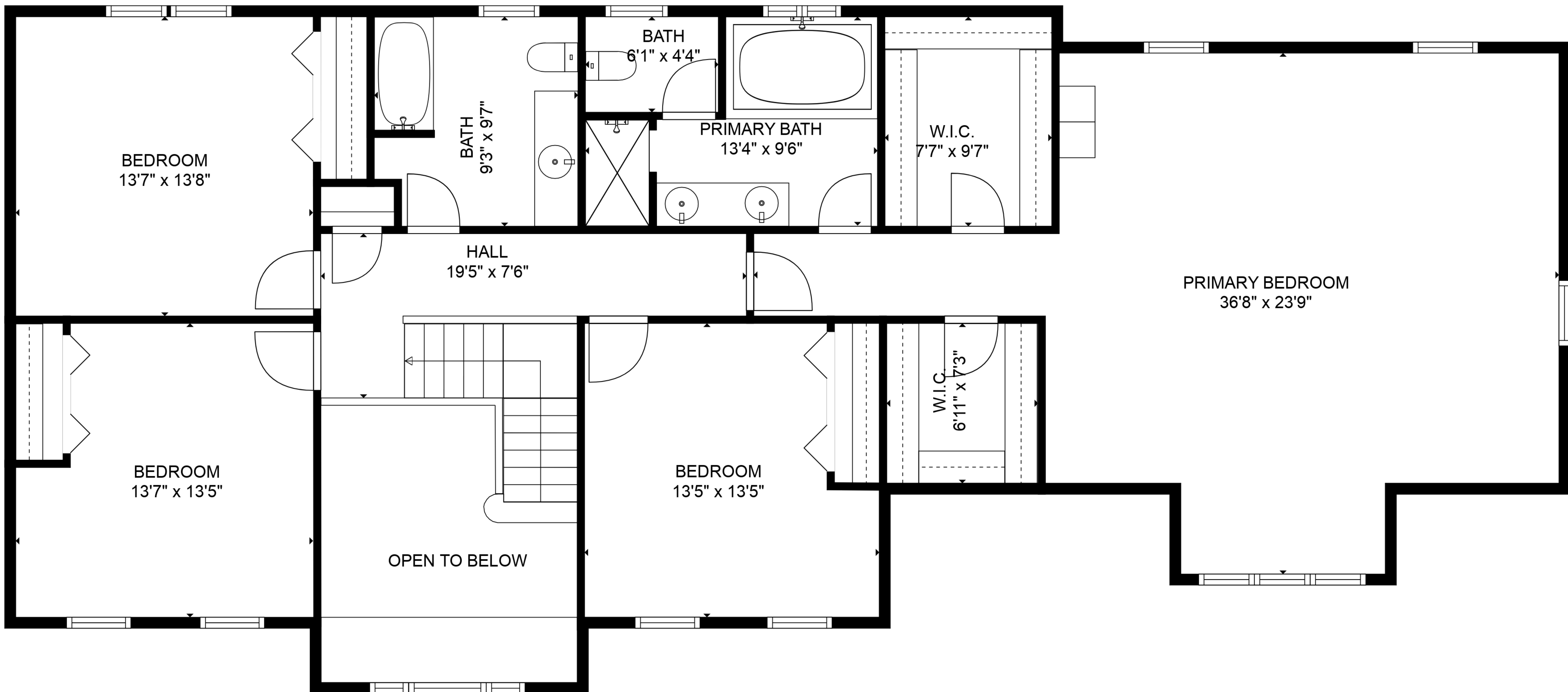
BASEMENT
66'11" x 30'4"

TOTAL: 3392 sq. ft
BELOW GROUND: 0 sq. ft, FLOOR 2: 1753 sq. ft, FLOOR 3: 1639 sq. ft
EXCLUDED AREAS: BASEMENT: 1739 sq. ft, GARAGE: 536 sq. ft, FIREPLACE: 13 sq. ft,
OPEN TO BELOW: 127 sq. ft
WALLS: 336 sq. ft



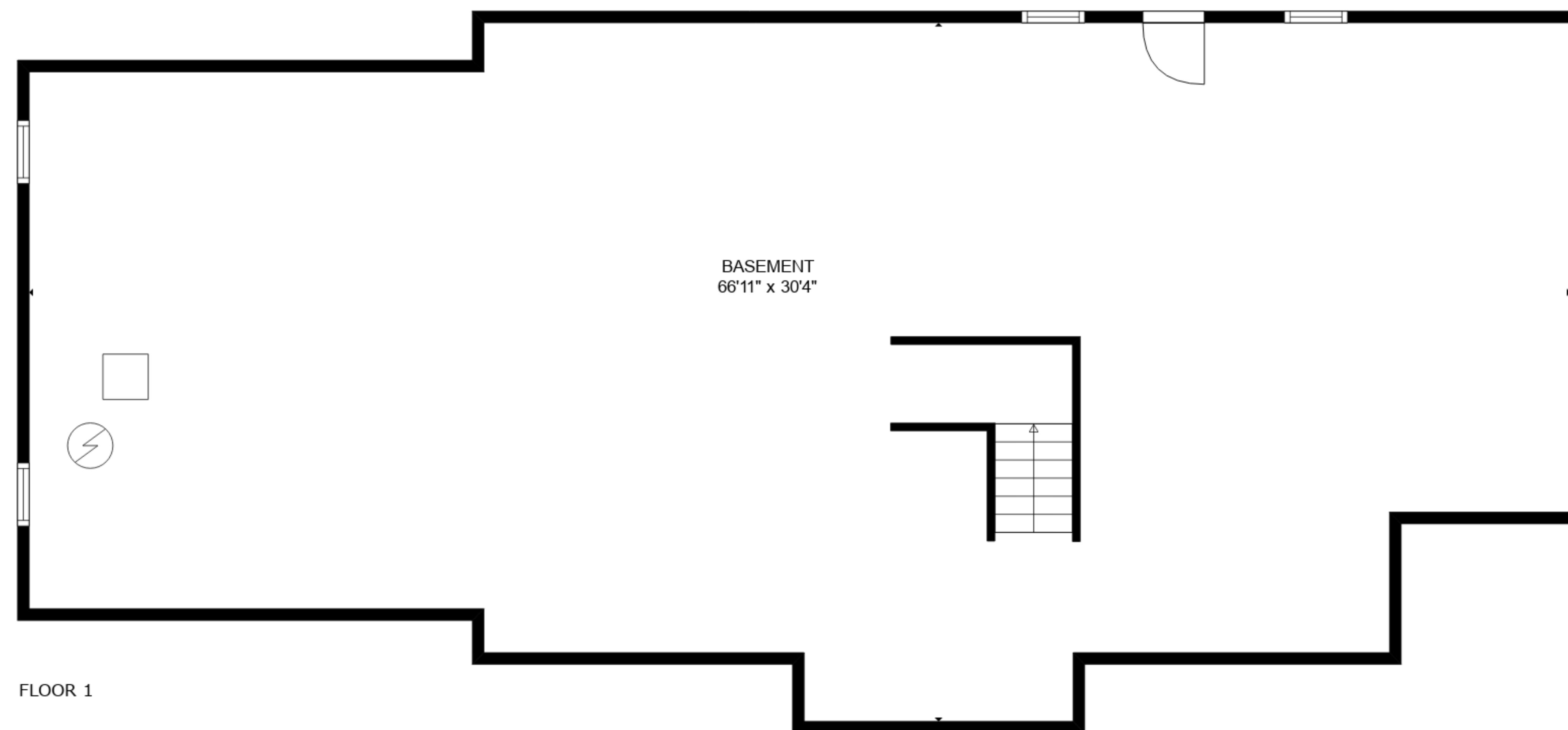
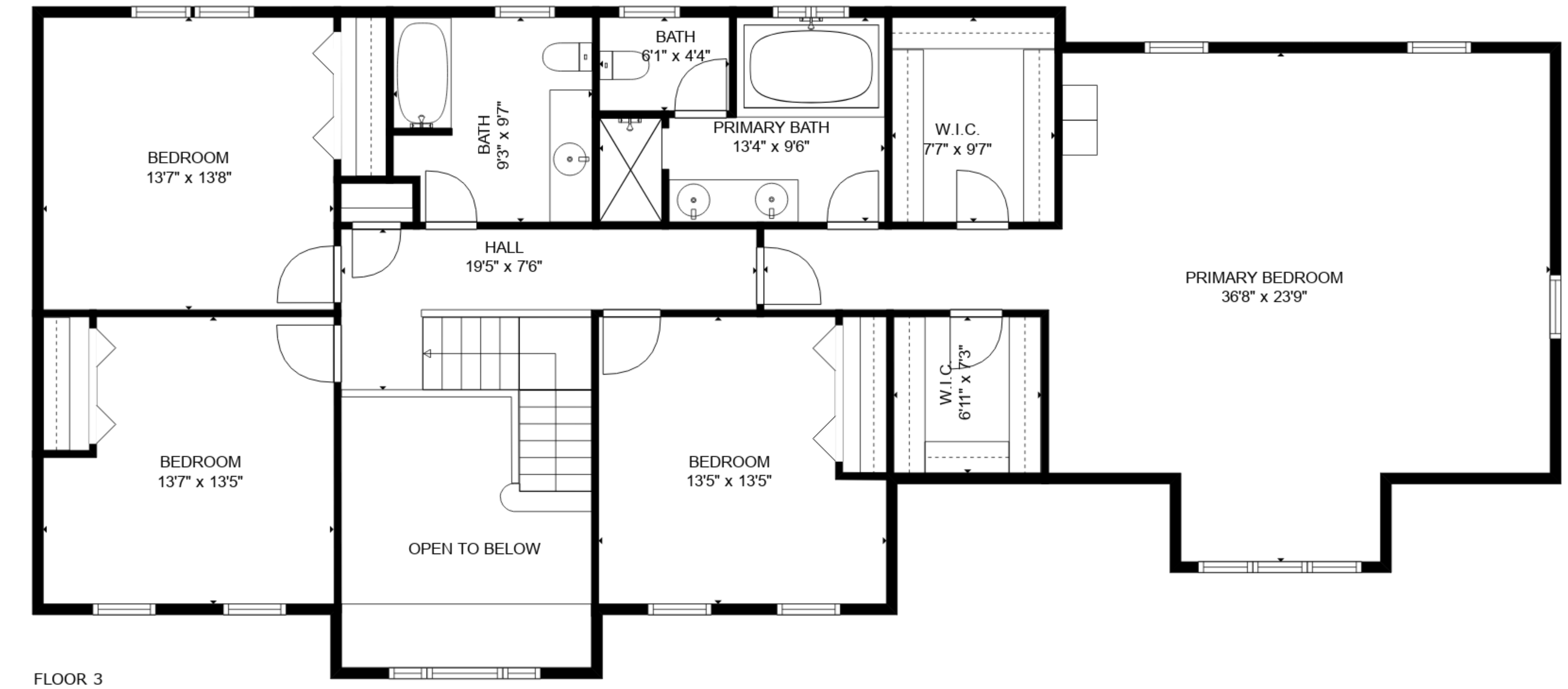
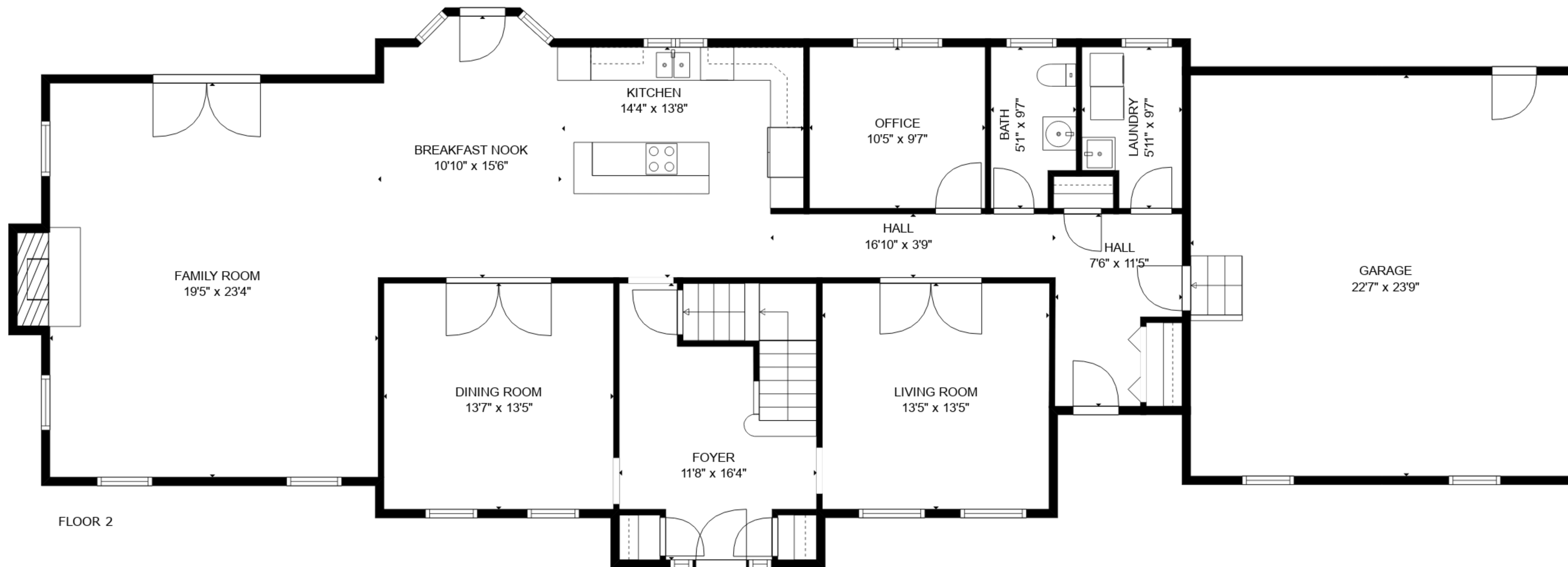
TOTAL: 3392 sq. ft

BELOW GROUND: 0 sq. ft, FLOOR 2: 1753 sq. ft, FLOOR 3: 1639 sq. ft
 EXCLUDED AREAS: BASEMENT: 1739 sq. ft, GARAGE: 536 sq. ft, FIREPLACE: 13 sq. ft,
 OPEN TO BELOW: 127 sq. ft
 WALLS: 336 sq. ft



TOTAL: 3392 sq. ft

BELOW GROUND: 0 sq. ft, FLOOR 2: 1753 sq. ft, FLOOR 3: 1639 sq. ft
EXCLUDED AREAS: BASEMENT: 1739 sq. ft, GARAGE: 536 sq. ft, FIREPLACE: 13 sq. ft,
OPEN TO BELOW: 127 sq. ft
WALLS: 336 sq. ft



FLOOR 1

TOTAL: 3392 sq. ft
 BELOW GROUND: 0 sq. ft, FLOOR 2: 1753 sq. ft, FLOOR 3: 1639 sq. ft
 EXCLUDED AREAS: BASEMENT: 1739 sq. ft, GARAGE: 536 sq. ft, FIREPLACE: 13 sq. ft,
 OPEN TO BELOW: 127 sq. ft
 WALLS: 336 sq. ft