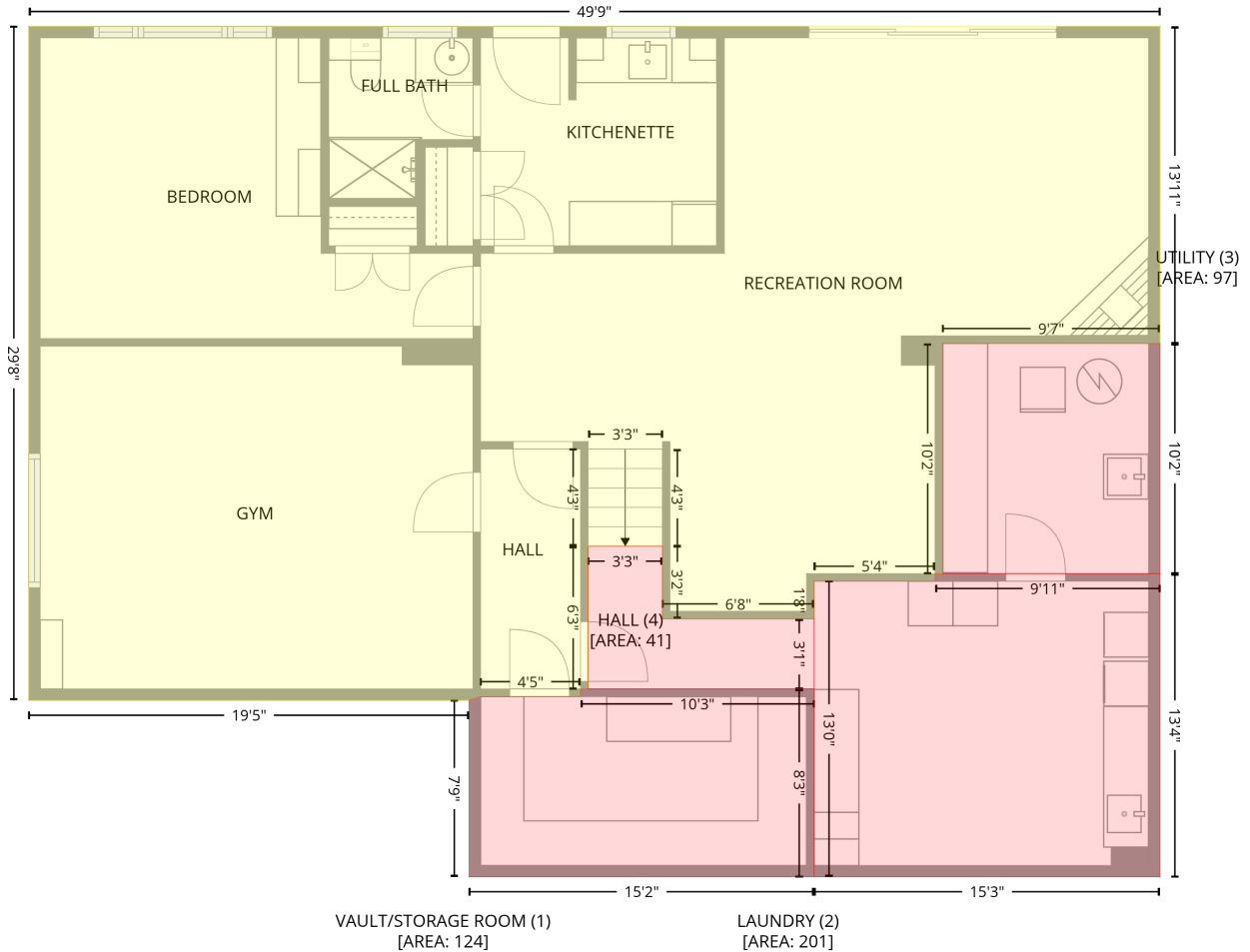


44 George Henry Boulevard, North York, Ontario M2J 1E2, Canada

Gross Living Area: 1625 sq. ft

Level 1 - Below Grade

Basement
[AREA: 1249]



Space	Area (sq. ft)	Calculation
Basement (Living area)	1249	Coordinate Polygon Area Algorithm using inches $-((544.8 + 544.8) * (97.4 - 264.8) + (544.8 + 430) * (264.8 - 264.8) + (430 + 430) * (264.8 - 386.4) + (430 + 426) * (386.4 - 386.4) + (426 + 426) * (386.4 - 390.4) + (426 + 362.2) * (390.4 - 390.4) + (362.2 + 362.2) * (390.4 - 410.3) + (362.2 + 282.1) * (410.3 - 410.3) + (282.1 + 282.1) * (410.3 - 372) + (282.1 + 242.9) * (372 - 372) + (242.9 + 242.9) * (372 - 447.4) + (242.9 + 238.9) * (447.4 - 447.4) + (238.9 + 238.9) * (447.4 - 451.4) + (238.9 + 186.1) * (451.4 - 451.4) + (186.1 + 180.1) * (451.4 - 453.4) + (180.1 + -52.4) * (453.4 - 453.4) + (-52.4 + -52.4) * (453.4 - 97.4) + (-52.4 + 544.8) * (97.4 - 97.4)) * 0.5 * 0.00694$
VAULT/STORAGE ROOM (Non-living area)	124	$-((362.2 + 362.2) * (447.4 - 546.6) + (362.2 + 180.1) * (546.6 - 546.6) + (180.1 + 180.1) * (546.6 - 453.4) + (180.1 + 186.1) * (453.4 - 451.4) + (186.1 + 238.9) * (451.4 - 451.4) + (238.9 + 238.9) * (451.4 - 447.4) + (238.9 + 362.2) * (447.4 - 447.4)) * 0.5 * 0.00694$
LAUNDRY (Non-living area)	201	$-((544.8 + 544.8) * (386.4 - 546.6) + (544.8 + 362.2) * (546.6 - 546.6) + (362.2 + 362.2) * (546.6 - 390.4) + (362.2 + 426) * (390.4 - 390.4) + (426 + 426) * (390.4 - 386.4) + (426 + 544.8) * (386.4 - 386.4)) * 0.5 * 0.00694$

44 George Henry Boulevard, North York, Ontario M2J 1E2, Canada

Gross Living Area: 1625 sq. ft

Level 1 - Below Grade

Space	Area (sq. ft)	Calculation <small>Coordinate Polygon Area Algorithm using inches</small>
UTILITY (Non-living area)	97	$-((544.8 + 544.8) * (264.8 - 386.4) + (544.8 + 430) * (386.4 - 386.4) + (430 + 430) * (386.4 - 264.8) + (430 + 544.8) * (264.8 - 264.8)) * 0.5 * 0.00694$
HALL (Non-living area)	41	$-((282.1 + 282.1) * (372 - 410.3) + (282.1 + 362.2) * (410.3 - 410.3) + (362.2 + 362.2) * (410.3 - 447.4) + (362.2 + 242.9) * (447.4 - 447.4) + (242.9 + 242.9) * (447.4 - 372) + (242.9 + 282.1) * (372 - 372)) * 0.5 * 0.00694$

44 George Henry Boulevard, North York, Ontario M2J 1E2, Canada

Gross Living Area: 1625 sq. ft

Level 2

1st floor
[AREA: 1625]



Space

Area (sq. ft)

Calculation Coordinate Polygon Area Algorithm using inches

1st floor
(Living area)

1625

$-\left((544.8 + 544.8) * (97.4 - 546.6) + (544.8 + 347.4) * (546.6 - 546.6) + (347.4 + 347.4) * (546.6 - 453.4) + (347.4 + -60.8) * (453.4 - 453.4) + (-60.8 + -60.8) * (453.4 - 97.4) + (-60.8 + 544.8) * (97.4 - 97.4)\right) * 0.5 * 0.00694$