

## Home data report

179 Athenia Drive, Albion, Stoney Creek, Ontario, Canada, L8J 1T4



**Total Area: 1952 sq. ft**

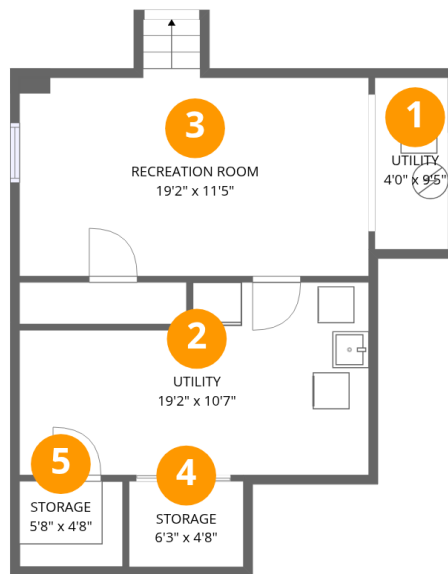
1st Floor: 274 sq. ft, 2nd Floor: 504 sq. ft, 3rd Floor: 630 sq. ft, 4th Floor: 544 sq. ft  
Excluded: Storage 73 sq. ft, Utility 237 sq. ft, Fireplace 12 sq. ft, Garage 159 sq. ft, Embedded window 6 sq. ft

## Property summary



## Home data report

179 Athenia Drive, Albion, Stoney Creek, Ontario, Canada, L8J 1T4



## Room dimensions

Floor 1

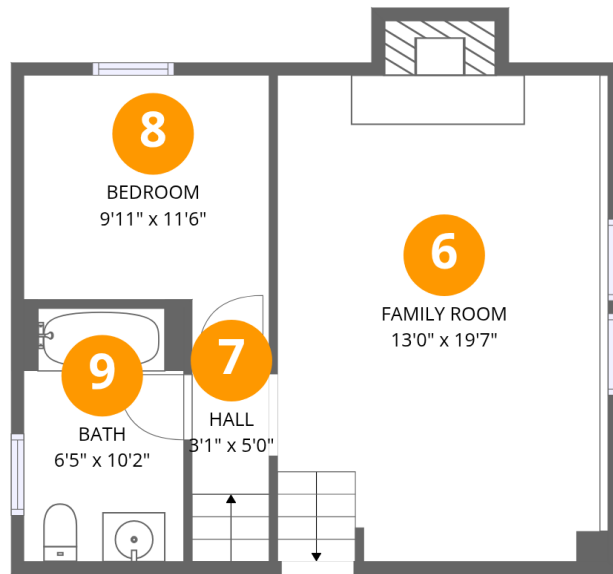
Total:274sqft

Excluded: 310sqft

#		Dimensions	sqft	Counted as living area
1	Utility	4'0" x 9'5"	38 sq. ft	No
2	Utility	19'2" x 10'7"	202 sq. ft	No
3	Recreation Room	19'2" x 11'5"	218 sq. ft	Yes
4	Storage	6'3" x 4'8"	29 sq. ft	No
5	Storage	5'8" x 4'8"	27 sq. ft	No

Home data report

179 Athenia Drive, Albion, Stoney Creek, Ontario, Canada, L8J 1T4



## Room dimensions

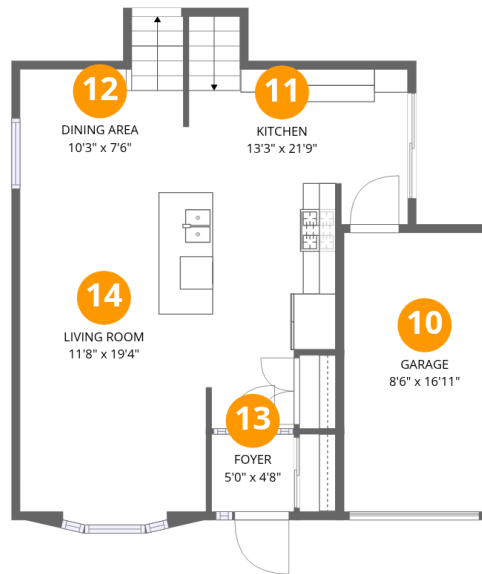
Floor 2

Total:504sqft Excluded: 12sqft

#		Dimensions	sqft	Counted as living area
6	Family Room	13'0" x 19'7"	254 sq. ft	Yes
7	Hall	3'1" x 5'0"	15 sq. ft	Yes
8	Bedroom	9'11" x 11'6"	113 sq. ft	Yes
9	Bath	6'5" x 10'2"	66 sq. ft	Yes

## Home data report

179 Athenia Drive, Albion, Stoney Creek, Ontario, Canada, L8J 1T4



## Room dimensions

Floor 3

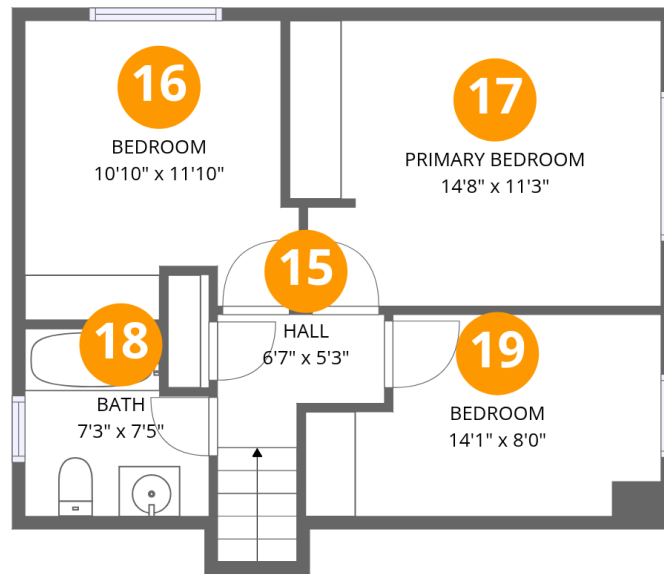
Total:630sqft

Excluded: 165sqft

#		Dimensions	sqft	Counted as living area
10	Garage	8'6" x 16'11"	144 sq. ft	No
11	Kitchen	13'3" x 21'9"	289 sq. ft	Yes
12	Dining Area	10'3" x 7'6"	77 sq. ft	Yes
13	Foyer	5'0" x 4'8"	23 sq. ft	Yes
14	Living Room	11'8" x 19'4"	225 sq. ft	Yes

Home data report

179 Athenia Drive, Albion, Stoney Creek, Ontario, Canada, L8J 1T4



## Room dimensions

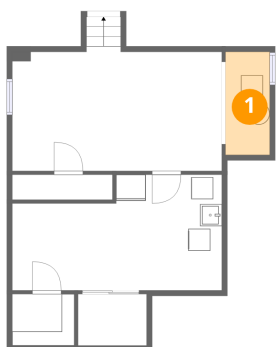
Floor 4

Total:544sqft Excluded: 0sqft

#		Dimensions	sqft	Counted as living area
15	Hall	6'7" x 5'3"	35 sq. ft	Yes
16	Bedroom	10'10" x 11'10"	128 sq. ft	Yes
17	Primary Bedroom	14'8" x 11'3"	165 sq. ft	Yes
18	Bath	7'3" x 7'5"	54 sq. ft	Yes
19	Bedroom	14'1" x 8'0"	112 sq. ft	Yes

### 1 Floor 1 - Utility

---



Dimensions: 4'0" x 9'5"  
Area: 38 sq. ft  
Counted as living area: No

Heated: Yes  
Finished: No  
Enclosed: Yes  
Contiguous: Yes  
Permitted: Yes  
Wet space: No  
Addition: No  
Conversion: No

### 2 Floor 1 - Utility

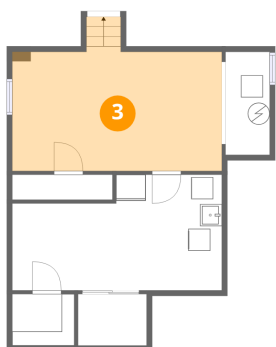
---



Dimensions: 19'2" x 10'7"  
Area: 202 sq. ft  
Counted as living area: No

Heated: Yes  
Finished: No  
Enclosed: Yes  
Contiguous: Yes  
Permitted: Yes  
Wet space: No  
Addition: No  
Conversion: No

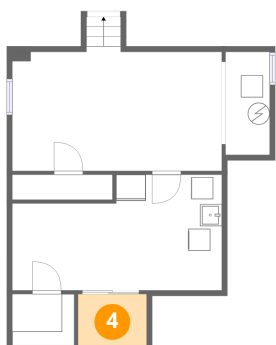
### 3 Floor 1 - Recreation Room



Dimensions: 19'2" x 11'5"  
Area: 218 sq. ft  
Counted as living area: Yes

Heated: Yes  
Finished: Yes  
Enclosed: Yes  
Contiguous: Yes  
Permitted: Yes  
Wet space: No  
Addition: No  
Conversion: No

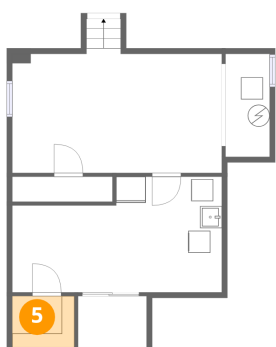
### 4 Floor 1 - Storage



Dimensions: 6'3" x 4'8"  
Area: 29 sq. ft  
Counted as living area: No

Heated: No  
Finished: No  
Enclosed: No  
Contiguous: Yes  
Permitted: Yes  
Wet space: No  
Addition: No  
Conversion: No

### 5 Floor 1 - Storage



Dimensions: 5'8" x 4'8"  
Area: 27 sq. ft  
Counted as living area: No

Heated: No  
Finished: No  
Enclosed: No  
Contiguous: Yes  
Permitted: Yes  
Wet space: No  
Addition: No  
Conversion: No

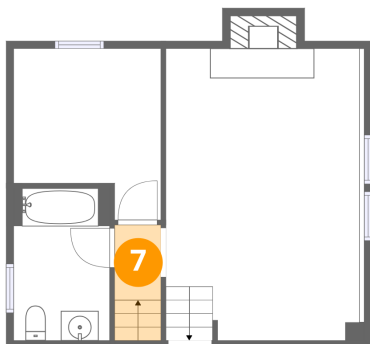
## 6 Floor 2 - Family Room



Dimensions: 13'0" x 19'7"  
Area: 254 sq. ft  
Counted as living area: Yes

Heated: Yes  
Finished: Yes  
Enclosed: Yes  
Contiguous: Yes  
Permitted: Yes  
Wet space: No  
Addition: No  
Conversion: No

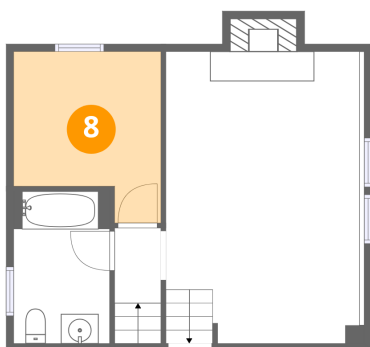
## 7 Floor 2 - Hall



Dimensions: 3'1" x 5'0"  
Area: 15 sq. ft  
Counted as living area: Yes

Heated: Yes  
Finished: Yes  
Enclosed: Yes  
Contiguous: Yes  
Permitted: Yes  
Wet space: No  
Addition: No  
Conversion: No

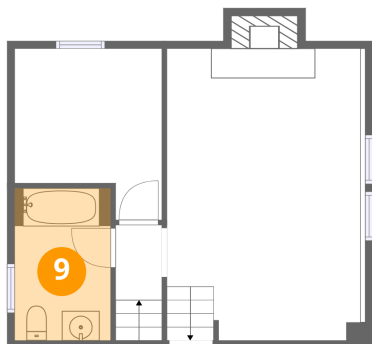
## 8 Floor 2 - Bedroom



Dimensions: 9'11" x 11'6"  
Area: 113 sq. ft  
Counted as living area: Yes

Heated: Yes  
Finished: Yes  
Enclosed: Yes  
Contiguous: Yes  
Permitted: Yes  
Wet space: No  
Addition: No  
Conversion: No

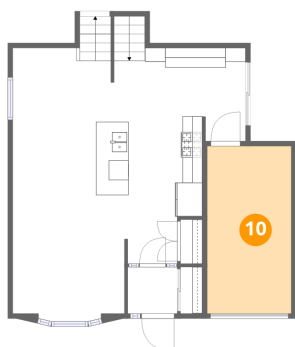
### 9 Floor 2 - Bath



Dimensions: 6'5" x 10'2"  
Area: 66 sq. ft  
Counted as living area: Yes

Heated: Yes  
Finished: Yes  
Enclosed: Yes  
Contiguous: Yes  
Permitted: Yes  
Wet space: Yes  
Addition: No  
Conversion: No

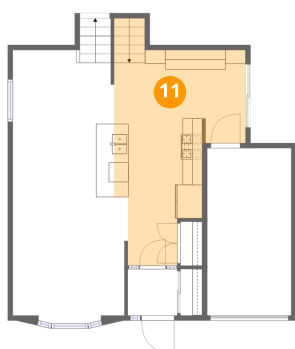
### 10 Floor 3 - Garage



Dimensions: 8'6" x 16'11"  
Area: 144 sq. ft  
Counted as living area: No

Heated: No  
Finished: No  
Enclosed: Yes  
Contiguous: Yes  
Permitted: Yes  
Wet space: No  
Addition: No  
Conversion: No

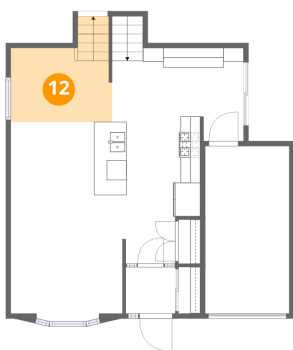
### 11 Floor 3 - Kitchen



Dimensions: 13'3" x 21'9"  
Area: 289 sq. ft  
Counted as living area: Yes

Heated: Yes  
Finished: Yes  
Enclosed: Yes  
Contiguous: Yes  
Permitted: Yes  
Wet space: No  
Addition: No  
Conversion: No

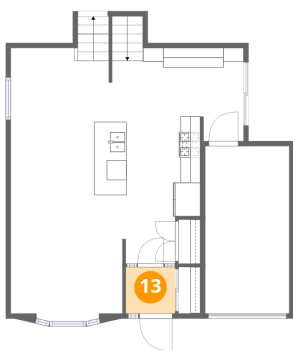
### 12 Floor 3 - Dining Area



Dimensions: 10'3" x 7'6"  
Area: 77 sq. ft  
Counted as living area: Yes

Heated: Yes  
Finished: Yes  
Enclosed: Yes  
Contiguous: Yes  
Permitted: Yes  
Wet space: No  
Addition: No  
Conversion: No

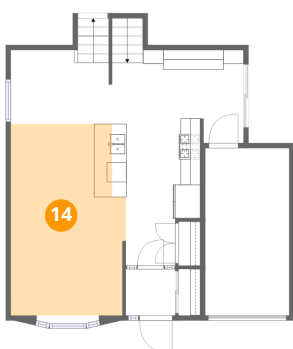
### 13 Floor 3 - Foyer



Dimensions: 5'0" x 4'8"  
Area: 23 sq. ft  
Counted as living area: Yes

Heated: Yes  
Finished: Yes  
Enclosed: Yes  
Contiguous: Yes  
Permitted: Yes  
Wet space: No  
Addition: No  
Conversion: No

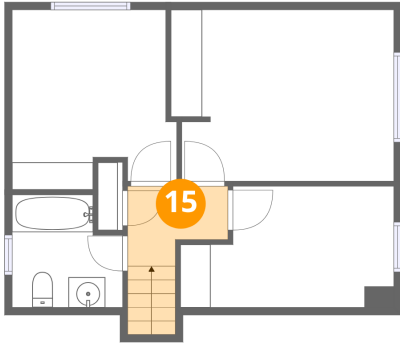
### 14 Floor 3 - Living Room



Dimensions: 11'8" x 19'4"  
Area: 225 sq. ft  
Counted as living area: Yes

Heated: Yes  
Finished: Yes  
Enclosed: Yes  
Contiguous: Yes  
Permitted: Yes  
Wet space: No  
Addition: No  
Conversion: No

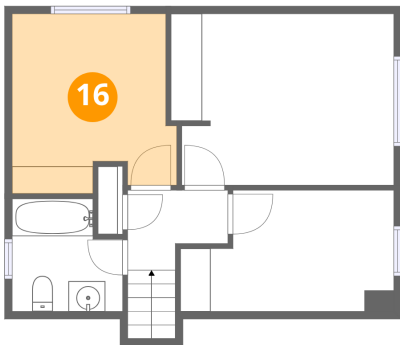
**15** Floor 4 - Hall



Dimensions: 6'7" x 5'3"  
Area: 35 sq. ft  
Counted as living area: Yes

Heated: Yes  
Finished: Yes  
Enclosed: Yes  
Contiguous: Yes  
Permitted: Yes  
Wet space: No  
Addition: No  
Conversion: No

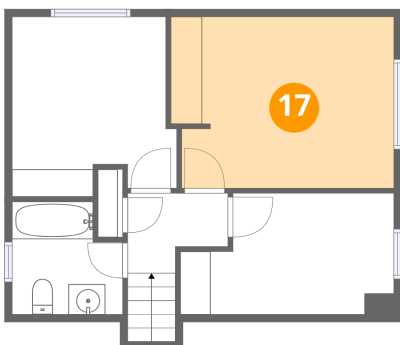
**16** Floor 4 - Bedroom



Dimensions: 10'10" x 11'10"  
Area: 128 sq. ft  
Counted as living area: Yes

Heated: Yes  
Finished: Yes  
Enclosed: Yes  
Contiguous: Yes  
Permitted: Yes  
Wet space: No  
Addition: No  
Conversion: No

**17** Floor 4 - Primary Bedroom



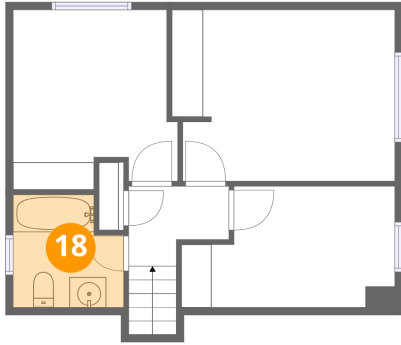
Dimensions: 14'8" x 11'3"  
Area: 165 sq. ft  
Counted as living area: Yes

Heated: Yes  
Finished: Yes  
Enclosed: Yes  
Contiguous: Yes  
Permitted: Yes  
Wet space: No  
Addition: No  
Conversion: No

179 Athenia Drive, Albion, Stoney Creek, Ontario, Canada, L8J 1T4

**18** Floor 4 - Bath

---

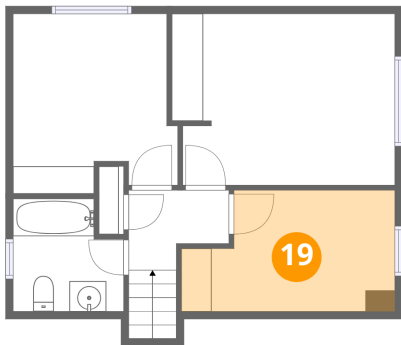


Dimensions: 7'3" x 7'5"  
Area: 54 sq. ft  
Counted as living area: Yes

Heated: Yes  
Finished: Yes  
Enclosed: Yes  
Contiguous: Yes  
Permitted: Yes  
Wet space: Yes  
Addition: No  
Conversion: No

**19** Floor 4 - Bedroom

---



Dimensions: 14'1" x 8'0"  
Area: 112 sq. ft  
Counted as living area: Yes

Heated: Yes  
Finished: Yes  
Enclosed: Yes  
Contiguous: Yes  
Permitted: Yes  
Wet space: No  
Addition: No  
Conversion: No