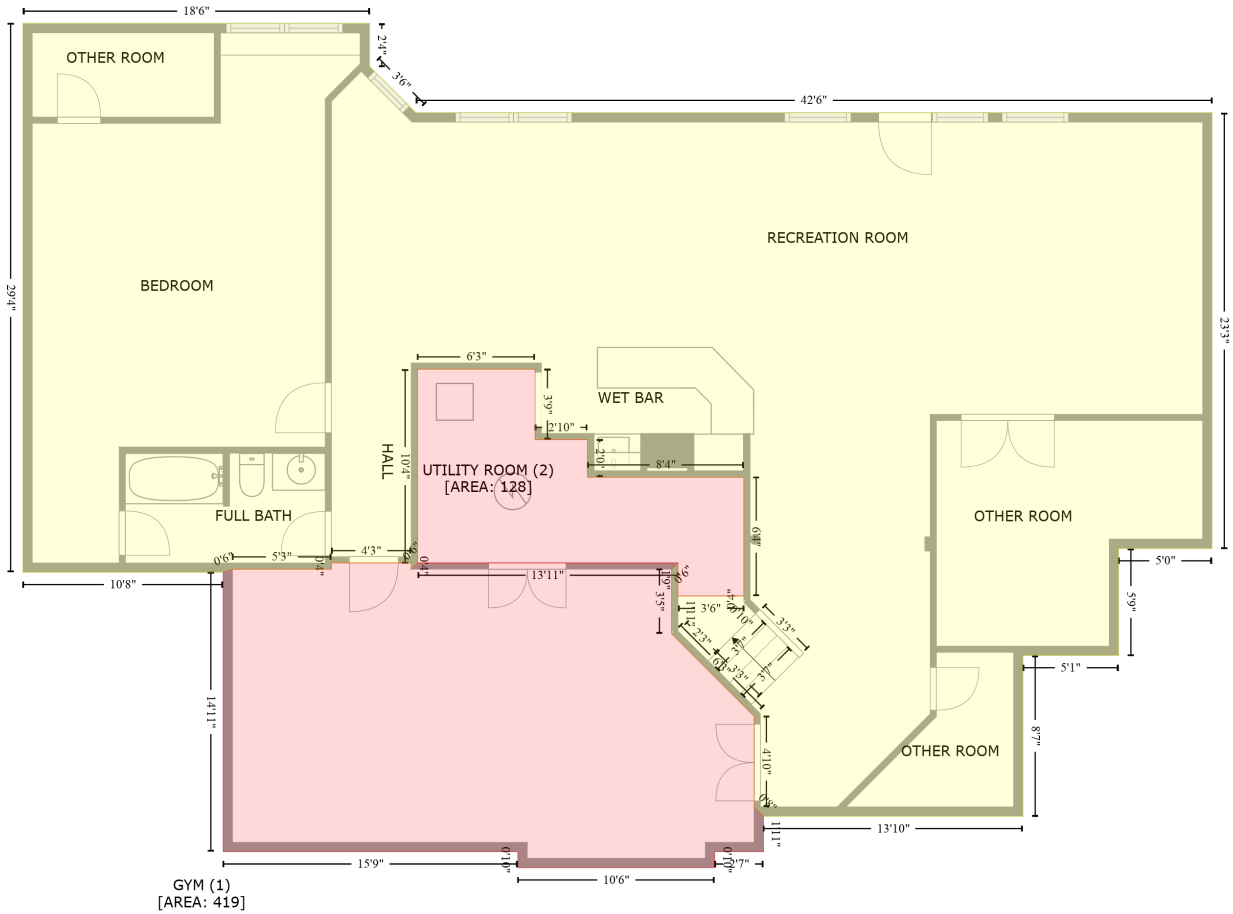


4808 Jolynn Wolf Way, Fisherville, Jefferson County, Kentucky, United States, 40023

Gross Living Area: 4136 sq. ft

Below Ground
[AREA: 1741]



Space	Area (sq. ft)	Calculation <small>Coordinate Polygon Area Algorithm using inches</small>
Below Ground (Living area)	1741	$ \begin{aligned} & -((335.1 + 335.1) * (114.7 - 142.3) + (335.1 + 364.7) * (142.3 - 172) + (364.7 + 875.2) * (172 - 172) \\ & + (875.2 + 875.2) * (172 - 451.4) + (875.2 + 815.4) * (451.4 - 451.4) + (815.4 + 815.4) * \\ & (451.4 - 519.9) + (815.4 + 754) * (519.9 - 519.9) + (754 + 754) * (519.9 - 623.1) + (754 + 587.7) * \\ & (623.1 - 623.1) + (587.7 + 581.7) * (623.1 - 617.1) + (581.7 + 581.7) * (617.1 - 558.9) + (581.7 + \\ & 528.8) * (558.9 - 506) + (528.8 + 528.8) * (506 - 464.6) + (528.8 + 532.8) * (464.6 - 460.6) + \\ & (532.8 + 532.8) * (460.6 - 481.9) + (532.8 + 575.1) * (481.9 - 481.9) + (575.1 + 575.1) * (481.9 - \\ & 405.7) + (575.1 + 474.9) * (405.7 - 405.7) + (474.9 + 474.9) * (405.7 - 381.6) + (474.9 + 441.3) * \\ & (381.6 - 381.6) + (441.3 + 441.3) * (381.6 - 336.4) + (441.3 + 365.8) * (336.4 - 336.4) + (365.8 + \\ & 365.8) * (336.4 - 460.6) + (365.8 + 361.8) * (460.6 - 464.6) + (361.8 + 361.8) * (464.6 - 460.6) + \\ & (361.8 + 310.7) * (460.6 - 460.6) + (310.7 + 310.7) * (460.6 - 464.6) + (310.7 + 247.3) * (464.6 - \\ & 464.6) + (247.3 + 241.3) * (464.6 - 466.6) + (241.3 + 112.9) * (466.6 - 466.6) + (112.9 + 112.9) * \\ & (466.6 - 114.7) + (112.9 + 335.1) * (114.7 - 114.7) * 0.5 * 0.00694 \end{aligned} $
GYM (Non-living area)	419	$ \begin{aligned} & -((361.8 + 361.8) * (460.6 - 464.6) + (361.8 + 365.8) * (464.6 - 460.6) + (365.8 + 532.8) * (460.6 - \\ & 460.6) + (532.8 + 528.8) * (460.6 - 464.6) + (528.8 + 528.8) * (464.6 - 506) + (528.8 + 581.7) * \\ & (506 - 558.9) + (581.7 + 581.7) * (558.9 - 617.1) + (581.7 + 587.7) * (617.1 - 623.1) + (587.7 + \\ & 587.7) * (623.1 - 645.8) + (587.7 + 556.4) * (645.8 - 645.8) + (556.4 + 556.4) * (645.8 - 656) + \end{aligned} $

4808 Jolynn Wolf Way, Fisherville, Jefferson County, Kentucky, United States, 40023

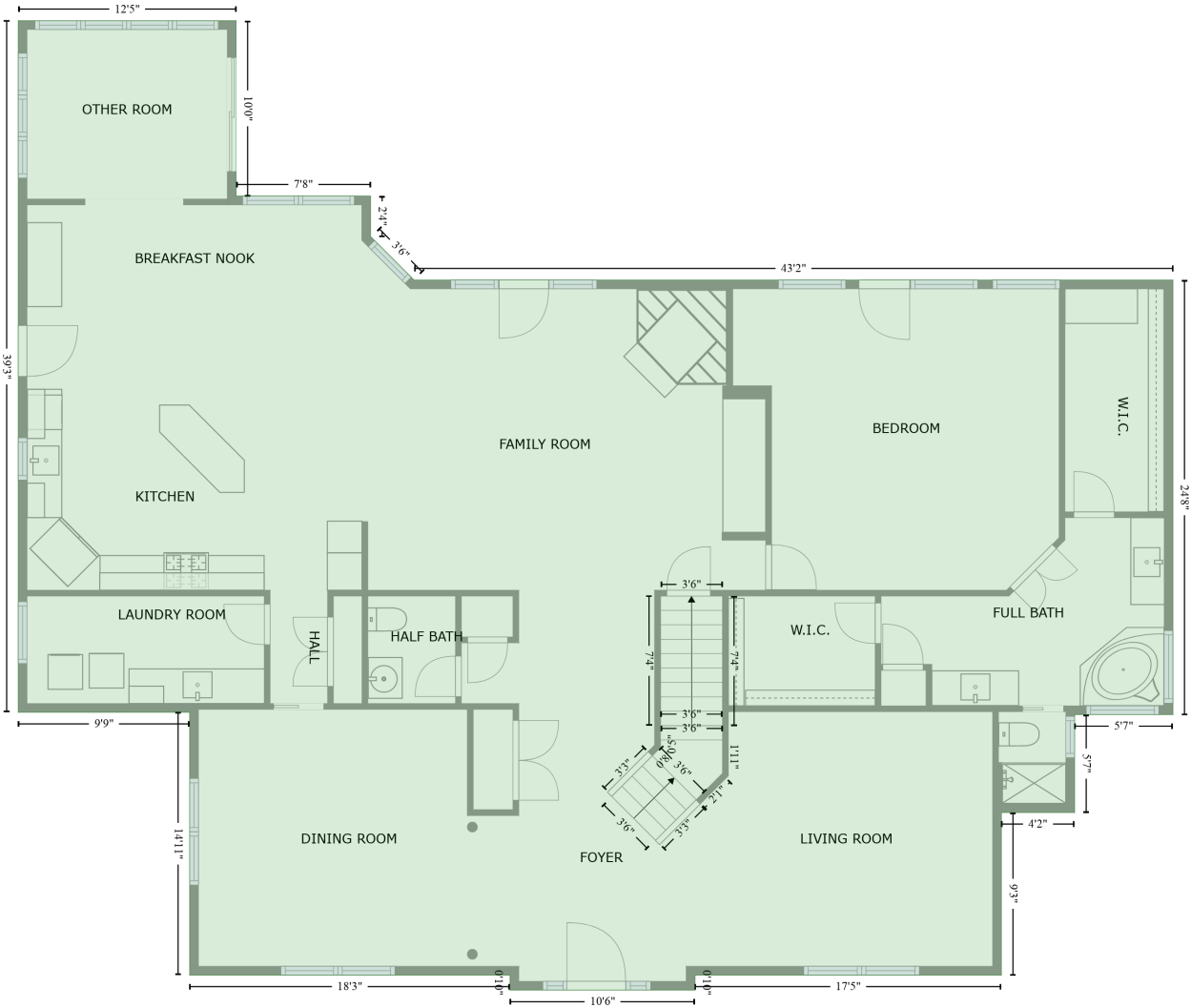
Gross Living Area: 4136 sq. ft

Space	Area (sq. ft)	Calculation <small>Coordinate Polygon Area Algorithm using inches</small>
UTILITY ROOM (Non-living area)	128	$\begin{aligned} & (556.4 + 430.2) * (656 - 656) + (430.2 + 430.2) * (656 - 645.8) + (430.2 + 241.3) * (645.8 - 645.8) \\ & + (241.3 + 241.3) * (645.8 - 466.6) + (241.3 + 247.3) * (466.6 - 464.6) + (247.3 + 310.7) * (464.6 - \\ & 464.6) + (310.7 + 310.7) * (464.6 - 460.6) + (310.7 + 361.8) * (460.6 - 460.6) * 0.5 * 0.00694 \\ & - ((441.3 + 441.3) * (336.4 - 381.6) + (441.3 + 474.9) * (381.6 - 381.6) + (474.9 + 474.9) * (381.6 - \\ & 405.7) + (474.9 + 575.1) * (405.7 - 405.7) + (575.1 + 575.1) * (405.7 - 481.9) + (575.1 + 532.8) * \\ & (481.9 - 481.9) + (532.8 + 532.8) * (481.9 - 460.6) + (532.8 + 365.8) * (460.6 - 460.6) + (365.8 + \\ & 365.8) * (460.6 - 336.4) + (365.8 + 441.3) * (336.4 - 336.4) * 0.5 * 0.00694 \end{aligned}$

4808 Jolynn Wolf Way, Fisherville, Jefferson County, Kentucky, United States, 40023

Gross Living Area: 4136 sq. ft

FLOOR 2
[AREA: 2556]



Space	Area (sq. ft)	Calculation
FLOOR 2 (Living area)	2556	Coordinate Polygon Area Algorithm using inches $-((243.4 + 243.4) * (-4.8 - 114.7) + (243.4 + 335.1) * (114.7 - 114.7) + (335.1 + 335.1) * (114.7 - 142.3) + (335.1 + 364.7) * (142.3 - 172) + (364.7 + 882.4) * (172 - 172) + (882.4 + 882.4) * (172 - 468.2) + (882.4 + 815.4) * (468.2 - 468.2) + (815.4 + 815.4) * (468.2 - 534.9) + (815.4 + 765.4) * (534.9 - 534.9) + (765.4 + 765.4) * (534.9 - 645.8) + (765.4 + 556.4) * (645.8 - 645.8) + (556.4 + 556.4) * (645.8 - 656) + (556.4 + 430.2) * (656 - 656) + (430.2 + 430.2) * (656 - 645.8) + (430.2 + 211.7) * (645.8 - 645.8) + (211.7 + 211.7) * (645.8 - 466.6) + (211.7 + 94.8) * (466.6 - 466.6) + (94.8 + 94.8) * (466.6 - -4.8) + (94.8 + 243.4) * (-4.8 - -4.8)) * 0.5 * 0.00694$

4808 Jolynn Wolf Way, Fisherville, Jefferson County, Kentucky, United States, 40023

Gross Living Area: 4136 sq. ft



Space	Area (sq. ft)	Calculation
FLOOR 3 (Living area)	1580	$-(765.4 + 765.4) * (172 - 207.7) + (765.4 + 882) * (207.7 - 207.7) + (882 + 882) * (207.7 - 273.1) + (882 + 765.4) * (273.1 - 273.1) + (765.4 + 765.4) * (273.1 - 547.4) + (765.4 + 718.9) * (547.4 - 547.4) + (718.9 + 718.9) * (547.4 - 645.8) + (718.9 + 609.4) * (645.8 - 645.8) + (609.4 + 609.4) * (645.8 - 547.4) + (609.4 + 581.1) * (547.4 - 547.4) + (581.1 + 575.1) * (547.4 - 541.4) + (575.1 + 575.1) * (541.4 - 513.8) + (575.1 + 532.2) * (513.8 - 556.9) + (532.2 + 496.4) * (556.9 - 521.4) + (496.4 + 528.8) * (521.4 - 489) + (528.8 + 528.8) * (489 - 386.9) + (528.8 + 405.1) * (386.9 - 386.9) + (405.1 + 405.1) * (386.9 - 541.4) + (405.1 + 399.1) * (541.4 - 547.4) + (399.1 + 363.3) * (547.4 - 547.4) + (363.3 + 363.3) * (547.4 - 645.8) + (363.3 + 256.8) * (645.8 - 645.8) + (256.8 + 256.8) * (645.8 - 547.4) + (256.8 + 211.7) * (547.4 - 547.4) + (211.7 + 211.7) * (547.4 - 466.6) + (211.7 + 213.7) * (466.6 - 460.6) + (213.7 + 213.7) * (460.6 - 287.6) + (213.7 + 176.3) * (287.6 - 287.6) + (176.3 + 176.3) * (287.6 - 249.7) + (176.3 + 94.8) * (249.7 - 249.7) + (94.8 + 94.8) * (249.7 - 172) + (94.8 + 765.4) * (172 - 172) * 0.5 * 0.00694$
OPEN TO BELOW (Non-living area)	245	$-(528.8 + 528.8) * (386.9 - 489) + (528.8 + 496.4) * (489 - 521.4) + (496.4 + 532.2) * (521.4 - 556.9) + (532.2 + 575.1) * (556.9 - 513.8) + (575.1 + 575.1) * (513.8 - 541.4) + (575.1 + 581.1) * (541.4 - 547.4) + (581.1 + 581.1) * (547.4 - 634.7) + (581.1 + 399.1) * (634.7 - 634.7) + (399.1 + 399.1) * (634.7 - 547.4) + (399.1 + 405.1) * (547.4 - 541.4) + (405.1 + 405.1) * (541.4 - 386.9) + (405.1 + 528.8) * (386.9 - 386.9) * 0.5 * 0.00694$
UNFINISHED ATTIC (Non-living area)	94	$-(176.3 + 176.3) * (249.7 - 287.6) + (176.3 + 213.7) * (287.6 - 287.6) + (213.7 + 213.7) * (287.6 - 375.4) + (213.7 + 94.8) * (375.4 - 375.4) + (94.8 + 94.8) * (375.4 - 249.7) + (94.8 + 176.3) * (249.7 - 249.7) * 0.5 * 0.00694$
LOW CEILING	75	$-(213.7 + 213.7) * (375.4 - 460.6) + (213.7 + 211.7) * (460.6 - 466.6) + (211.7 + 94.8) * (466.6 -$

4808 Jolynn Wolf Way, Fisherville, Jefferson County, Kentucky, United States, 40023

Gross Living Area: 4136 sq. ft

Space	Area (sq. ft)	Calculation <small>Coordinate Polygon Area Algorithm using inches</small>
(Non-living area)		$466.6 + (94.8 + 94.8) * (466.6 - 375.4) + (94.8 + 213.7) * (375.4 - 375.4) * 0.5 * 0.00694$