



Home report


843 17th Avenue North, Crescent Lake, St. Petersburg, Pinellas County, Florida, United States, 33704





Property summary


 **1** Garages


 **7** Bedrooms

 **5** Bathrooms

 **2** Half baths

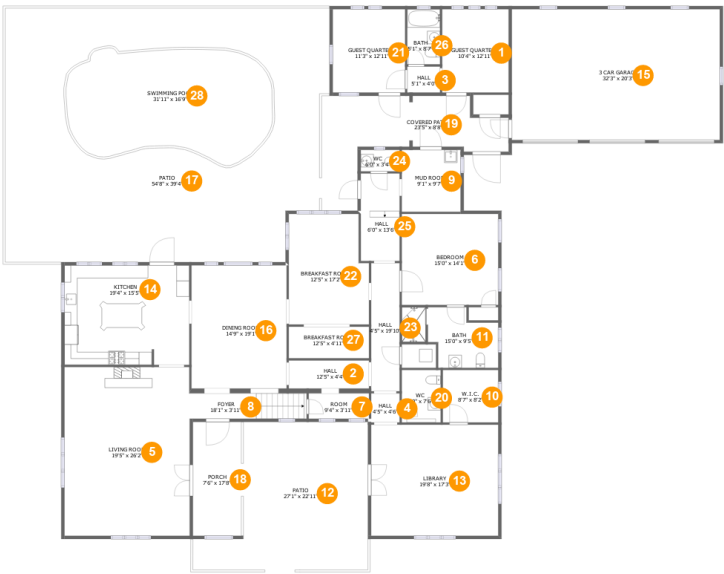
 **2** Floors

 **5,171** Gross living area sqft

 **8,276** Total sqft

Home report

843 17th Avenue North, Crescent Lake, St. Petersburg, Pinellas County, Florida, United States, 33704



Room dimensions

Floor 1 Total sqft: 6296 Living area: 3266

#		Dimensions	sqft	Counted as living area
1	Guest Quarters	10'4" x 12'11"	133 sq. ft	Yes
2	Hall	12'5" x 4'4"	54 sq. ft	Yes
3	Hall	5'1" x 4'0"	21 sq. ft	Yes
4	Hall	4'5" x 4'6"	20 sq. ft	Yes
5	Living Room	19'5" x 26'2"	507 sq. ft	Yes
6	Bedroom	15'0" x 14'1"	211 sq. ft	Yes
7	Room	9'4" x 3'11"	37 sq. ft	Yes
8	Foyer	18'1" x 3'11"	71 sq. ft	Yes
9	Mud Room	9'1" x 9'7"	87 sq. ft	Yes
10	W.I.C.	8'7" x 8'2"	70 sq. ft	Yes
11	Bath	15'0" x 9'5"	105 sq. ft	Yes

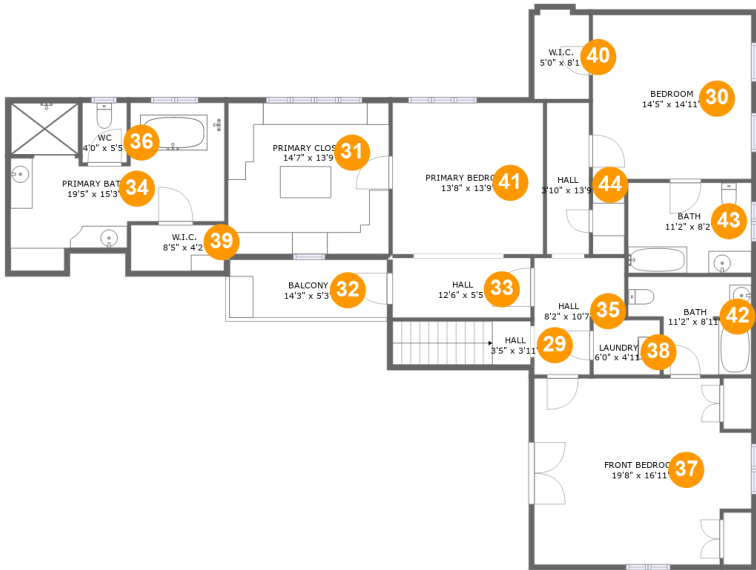
Home report

843 17th Avenue North, Crescent Lake, St. Petersburg, Pinellas County, Florida, United States, 33704

#		Dimensions	sqft	Counted as living area
12	Patio	27'1" x 22'11"	484 sq. ft	No
13	Library	19'8" x 17'3"	339 sq. ft	Yes
14	Kitchen	19'4" x 15'5"	298 sq. ft	Yes
15	3 Car Garage	32'3" x 20'3"	653 sq. ft	No
16	Dining Room	14'9" x 19'1"	285 sq. ft	Yes
17	Patio	54'8" x 39'4"	1998 sq. ft	No
18	Porch	7'6" x 17'8"	132 sq. ft	No
19	Covered Patio	23'5" x 8'8"	169 sq. ft	No
20	WC	6'0" x 7'6"	49 sq. ft	Yes
21	Guest Quarters	11'3" x 12'11"	145 sq. ft	Yes
22	Breakfast Room	12'5" x 17'2"	201 sq. ft	Yes
23	Hall	4'5" x 19'10"	88 sq. ft	Yes
24	WC	6'0" x 3'4"	20 sq. ft	Yes
25	Hall	6'0" x 13'6"	82 sq. ft	Yes
26	Bath	5'1" x 8'7"	43 sq. ft	Yes
27	Breakfast Room	12'5" x 4'11"	61 sq. ft	Yes
28	Swimming Pool	31'11" x 16'9"	475 sq. ft	No

Home report

843 17th Avenue North, Crescent Lake, St. Petersburg, Pinellas County, Florida, United States, 33704



Room dimensions

Floor 2 Total sqft: 1980 Living area: 1905

#		Dimensions	sqft	Counted as living area
29	Hall	3'5" x 3'11"	49 sq. ft	Yes
30	Bedroom	14'5" x 14'11"	214 sq. ft	Yes
31	Primary Closet	14'7" x 13'9"	201 sq. ft	Yes
32	Balcony	14'3" x 5'3"	75 sq. ft	No
33	Hall	12'6" x 5'5"	68 sq. ft	Yes
34	Primary Bath	19'5" x 15'3"	217 sq. ft	Yes
35	Hall	8'2" x 10'7"	70 sq. ft	Yes
36	WC	4'0" x 5'5"	22 sq. ft	Yes
37	Front Bedroom	19'8" x 16'11"	304 sq. ft	Yes
38	Laundry	6'0" x 4'11"	30 sq. ft	Yes
39	W.I.C.	8'5" x 4'2"	35 sq. ft	Yes

Home report

843 17th Avenue North, Crescent Lake, St. Petersburg, Pinellas County, Florida, United States, 33704

#		Dimensions	sqft	Counted as living area
40	W.I.C.	5'0" x 8'1"	39 sq. ft	Yes
41	Primary Bedroom	13'8" x 13'9"	188 sq. ft	Yes
42	Bath	11'2" x 8'11"	81 sq. ft	Yes
43	Bath	11'2" x 8'2"	92 sq. ft	Yes
44	Hall	3'10" x 13'9"	53 sq. ft	Yes

843 17th Avenue North, Crescent Lake, St. Petersburg, Pinellas
County, Florida, United States, 33704

1 Floor 1 - Guest Quarters



Dimensions: 10'4" x 12'11"
Area: 133 sq. ft
Counted as living area: Yes

Heated: Yes
Finished: Yes
Enclosed: Yes
Contiguous: Yes
Permitted: Yes
Wet space: No
Addition: No
Conversion: No

2 Floor 1 - Hall



Dimensions: 12'5" x 4'4"
Area: 54 sq. ft
Counted as living area: Yes

Heated: Yes
Finished: Yes
Enclosed: Yes
Contiguous: Yes
Permitted: Yes
Wet space: No
Addition: No
Conversion: No

843 17th Avenue North, Crescent Lake, St. Petersburg, Pinellas
County, Florida, United States, 33704

3 Floor 1 - Hall



Dimensions: 5'1" x 4'0"
Area: 21 sq. ft
Counted as living area: Yes

Heated: Yes
Finished: Yes
Enclosed: Yes
Contiguous: Yes
Permitted: Yes
Wet space: No
Addition: No
Conversion: No

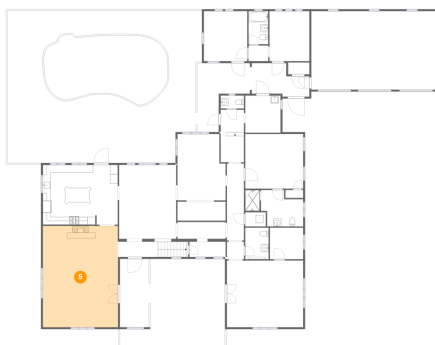
4 Floor 1 - Hall



Dimensions: 4'5" x 4'6"
Area: 20 sq. ft
Counted as living area: Yes

Heated: Yes
Finished: Yes
Enclosed: Yes
Contiguous: Yes
Permitted: Yes
Wet space: No
Addition: No
Conversion: No

5 Floor 1 - Living Room

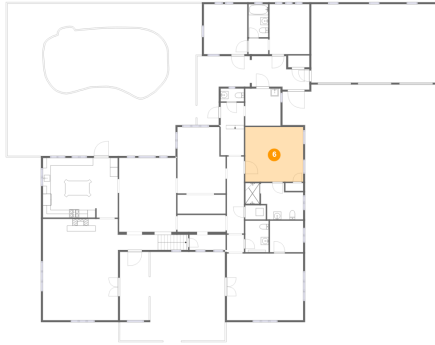


Dimensions: 19'5" x 26'2"
Area: 507 sq. ft
Counted as living area: Yes

Heated: Yes
Finished: Yes
Enclosed: Yes
Contiguous: Yes
Permitted: Yes
Wet space: No
Addition: No
Conversion: No

843 17th Avenue North, Crescent Lake, St. Petersburg, Pinellas
County, Florida, United States, 33704

6 Floor 1 - Bedroom



Dimensions: 15'0" x 14'1"
Area: 211 sq. ft
Counted as living area: Yes

Heated: Yes
Finished: Yes
Enclosed: Yes
Contiguous: Yes
Permitted: Yes
Wet space: No
Addition: No
Conversion: No

7 Floor 1 - Room



Dimensions: 9'4" x 3'11"
Area: 37 sq. ft
Counted as living area: Yes

Heated: Yes
Finished: Yes
Enclosed: Yes
Contiguous: Yes
Permitted: Yes
Wet space: No
Addition: No
Conversion: No

8 Floor 1 - Foyer



Dimensions: 18'1" x 3'11"
Area: 71 sq. ft
Counted as living area: Yes

Heated: Yes
Finished: Yes
Enclosed: Yes
Contiguous: Yes
Permitted: Yes
Wet space: No
Addition: No
Conversion: No

843 17th Avenue North, Crescent Lake, St. Petersburg, Pinellas
County, Florida, United States, 33704

9 Floor 1 - Mud Room



Dimensions: 9'1" x 9'7"
Area: 87 sq. ft
Counted as living area: Yes

Heated: Yes
Finished: Yes
Enclosed: Yes
Contiguous: Yes
Permitted: Yes
Wet space: No
Addition: No
Conversion: No

10 Floor 1 - W.I.C.



Dimensions: 8'7" x 8'2"
Area: 70 sq. ft
Counted as living area: Yes

Heated: Yes
Finished: Yes
Enclosed: Yes
Contiguous: Yes
Permitted: Yes
Wet space: No
Addition: No
Conversion: No

11 Floor 1 - Bath

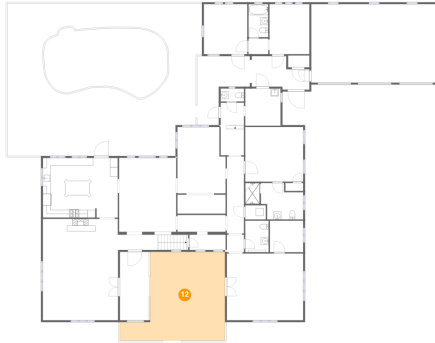


Dimensions: 15'0" x 9'5"
Area: 105 sq. ft
Counted as living area: Yes

Heated: Yes
Finished: Yes
Enclosed: Yes
Contiguous: Yes
Permitted: Yes
Wet space: Yes
Addition: No
Conversion: No

843 17th Avenue North, Crescent Lake, St. Petersburg, Pinellas
County, Florida, United States, 33704

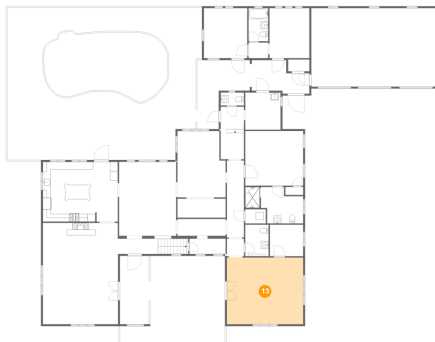
12 Floor 1 - Patio



Dimensions: 27'1" x 22'11"
Area: 484 sq. ft
Counted as living area: No

Heated: No
Finished: Yes
Enclosed: No
Contiguous: Yes
Permitted: Yes
Wet space: No
Addition: No
Conversion: No

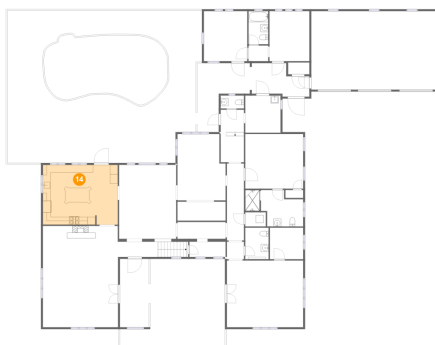
13 Floor 1 - Library



Dimensions: 19'8" x 17'3"
Area: 339 sq. ft
Counted as living area: Yes

Heated: Yes
Finished: Yes
Enclosed: Yes
Contiguous: Yes
Permitted: Yes
Wet space: No
Addition: No
Conversion: No

14 Floor 1 - Kitchen



Dimensions: 19'4" x 15'5"
Area: 298 sq. ft
Counted as living area: Yes

Heated: Yes
Finished: Yes
Enclosed: Yes
Contiguous: Yes
Permitted: Yes
Wet space: No
Addition: No
Conversion: No

843 17th Avenue North, Crescent Lake, St. Petersburg, Pinellas
County, Florida, United States, 33704

15 Floor 1 - 3 Car Garage



Dimensions: 32'3" x 20'3"
Area: 653 sq. ft
Counted as living area: No

Heated: No
Finished: Yes
Enclosed: Yes
Contiguous: Yes
Permitted: Yes
Wet space: No
Addition: No
Conversion: No

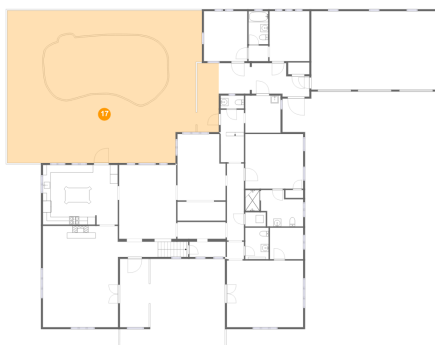
16 Floor 1 - Dining Room



Dimensions: 14'9" x 19'1"
Area: 285 sq. ft
Counted as living area: Yes

Heated: Yes
Finished: Yes
Enclosed: Yes
Contiguous: Yes
Permitted: Yes
Wet space: No
Addition: No
Conversion: No

17 Floor 1 - Patio



Dimensions: 54'8" x 39'4"
Area: 1998 sq. ft
Counted as living area: No

Heated: No
Finished: Yes
Enclosed: No
Contiguous: Yes
Permitted: Yes
Wet space: No
Addition: No
Conversion: No

843 17th Avenue North, Crescent Lake, St. Petersburg, Pinellas
County, Florida, United States, 33704

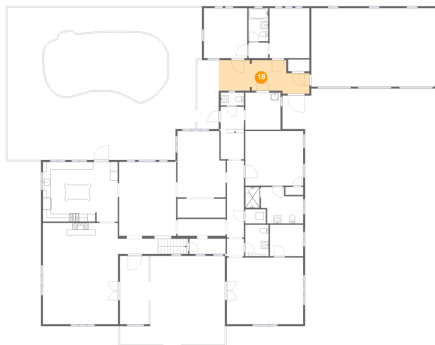
18 Floor 1 - Porch



Dimensions: 7'6" x 17'8"
Area: 132 sq. ft
Counted as living area: No

Heated: No
Finished: Yes
Enclosed: No
Contiguous: Yes
Permitted: Yes
Wet space: No
Addition: No
Conversion: No

19 Floor 1 - Covered Patio



Dimensions: 23'5" x 8'8"
Area: 169 sq. ft
Counted as living area: No

Heated: No
Finished: Yes
Enclosed: No
Contiguous: Yes
Permitted: Yes
Wet space: No
Addition: No
Conversion: No

20 Floor 1 - WC

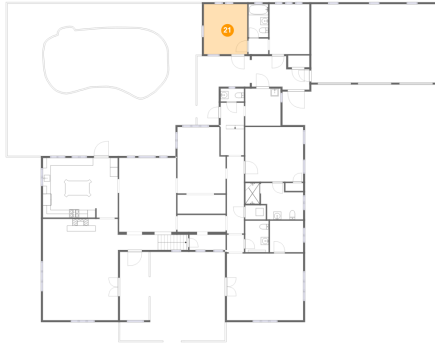


Dimensions: 6'0" x 7'6"
Area: 49 sq. ft
Counted as living area: Yes

Heated: Yes
Finished: Yes
Enclosed: Yes
Contiguous: Yes
Permitted: Yes
Wet space: Yes
Addition: No
Conversion: No

843 17th Avenue North, Crescent Lake, St. Petersburg, Pinellas
County, Florida, United States, 33704

21 Floor 1 - Guest Quarters



Dimensions: 11'3" x 12'11"
Area: 145 sq. ft
Counted as living area: Yes

Heated: Yes
Finished: Yes
Enclosed: Yes
Contiguous: Yes
Permitted: Yes
Wet space: No
Addition: No
Conversion: No

22 Floor 1 - Breakfast Room



Dimensions: 12'5" x 17'2"
Area: 201 sq. ft
Counted as living area: Yes

Heated: Yes
Finished: Yes
Enclosed: Yes
Contiguous: Yes
Permitted: Yes
Wet space: No
Addition: No
Conversion: No

23 Floor 1 - Hall



Dimensions: 4'5" x 19'10"
Area: 88 sq. ft
Counted as living area: Yes

Heated: Yes
Finished: Yes
Enclosed: Yes
Contiguous: Yes
Permitted: Yes
Wet space: No
Addition: No
Conversion: No

843 17th Avenue North, Crescent Lake, St. Petersburg, Pinellas
County, Florida, United States, 33704

24 Floor 1 - WC



Dimensions: 6'0" x 3'4"
Area: 20 sq. ft
Counted as living area: Yes

Heated: Yes
Finished: Yes
Enclosed: Yes
Contiguous: Yes
Permitted: Yes
Wet space: Yes
Addition: No
Conversion: No

25 Floor 1 - Hall



Dimensions: 6'0" x 13'6"
Area: 82 sq. ft
Counted as living area: Yes

Heated: Yes
Finished: Yes
Enclosed: Yes
Contiguous: Yes
Permitted: Yes
Wet space: No
Addition: No
Conversion: No

26 Floor 1 - Bath



Dimensions: 5'1" x 8'7"
Area: 43 sq. ft
Counted as living area: Yes

Heated: Yes
Finished: Yes
Enclosed: Yes
Contiguous: Yes
Permitted: Yes
Wet space: Yes
Addition: No
Conversion: No

843 17th Avenue North, Crescent Lake, St. Petersburg, Pinellas
County, Florida, United States, 33704

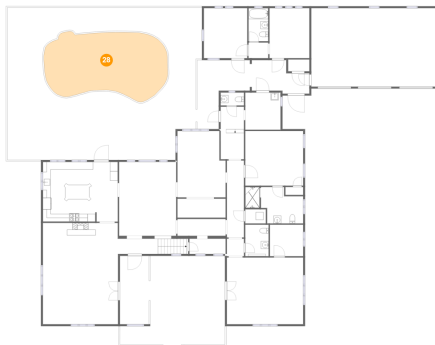
27 Floor 1 - Breakfast Room



Dimensions: 12'5" x 4'11"
Area: 61 sq. ft
Counted as living area: Yes

Heated: Yes
Finished: Yes
Enclosed: Yes
Contiguous: Yes
Permitted: Yes
Wet space: No
Addition: No
Conversion: No

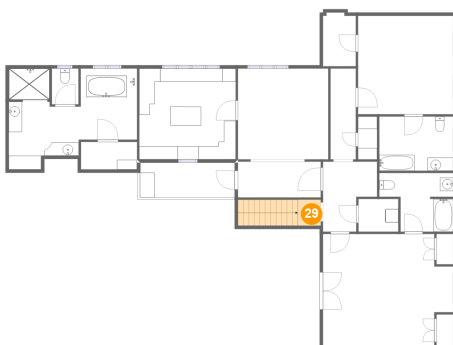
28 Floor 1 - Swimming Pool



Dimensions: 31'11" x 16'9"
Area: 475 sq. ft
Counted as living area: No

Heated: No
Finished: No
Enclosed: No
Contiguous: Yes
Permitted: No
Wet space: No
Addition: No
Conversion: No

29 Floor 2 - Hall



Dimensions: 3'5" x 3'11"
Area: 49 sq. ft
Counted as living area: Yes

Heated: Yes
Finished: Yes
Enclosed: Yes
Contiguous: Yes
Permitted: Yes
Wet space: No
Addition: No
Conversion: No

843 17th Avenue North, Crescent Lake, St. Petersburg, Pinellas
County, Florida, United States, 33704

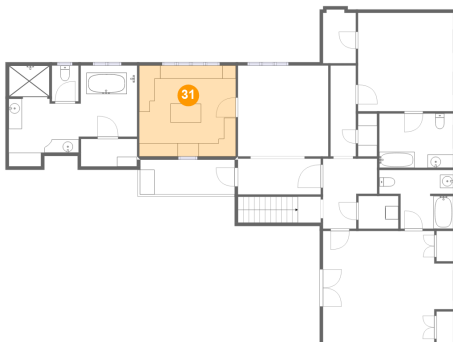
30 Floor 2 - Bedroom



Dimensions: 14'5" x 14'11"
Area: 214 sq. ft
Counted as living area: Yes

Heated: Yes
Finished: Yes
Enclosed: Yes
Contiguous: Yes
Permitted: Yes
Wet space: No
Addition: No
Conversion: No

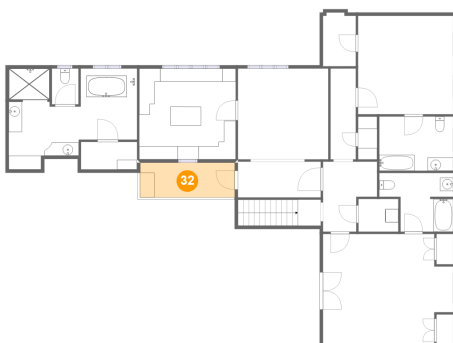
31 Floor 2 - Primary Closet



Dimensions: 14'7" x 13'9"
Area: 201 sq. ft
Counted as living area: Yes

Heated: Yes
Finished: Yes
Enclosed: Yes
Contiguous: Yes
Permitted: Yes
Wet space: No
Addition: No
Conversion: No

32 Floor 2 - Balcony

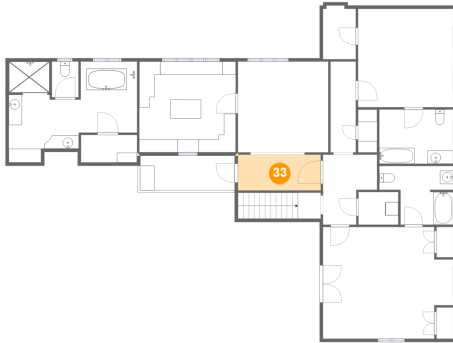


Dimensions: 14'3" x 5'3"
Area: 75 sq. ft
Counted as living area: No

Heated: No
Finished: Yes
Enclosed: No
Contiguous: Yes
Permitted: Yes
Wet space: No
Addition: No
Conversion: No

843 17th Avenue North, Crescent Lake, St. Petersburg, Pinellas County, Florida, United States, 33704

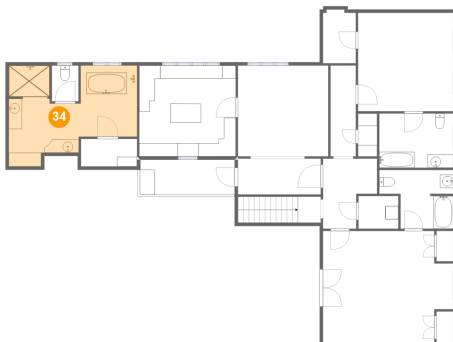
33 Floor 2 - Hall



Dimensions: 12'6" x 5'5"
Area: 68 sq. ft
Counted as living area: Yes

Heated: Yes
Finished: Yes
Enclosed: Yes
Contiguous: Yes
Permitted: Yes
Wet space: No
Addition: No
Conversion: No

34 Floor 2 - Primary Bath



Dimensions: 19'5" x 15'3"
Area: 217 sq. ft
Counted as living area: Yes

Heated: Yes
Finished: Yes
Enclosed: Yes
Contiguous: Yes
Permitted: Yes
Wet space: Yes
Addition: No
Conversion: No

35 Floor 2 - Hall



Dimensions: 8'2" x 10'7"
Area: 70 sq. ft
Counted as living area: Yes

Heated: Yes
Finished: Yes
Enclosed: Yes
Contiguous: Yes
Permitted: Yes
Wet space: No
Addition: No
Conversion: No

Home report

843 17th Avenue North, Crescent Lake, St. Petersburg, Pinellas County, Florida, United States, 33704

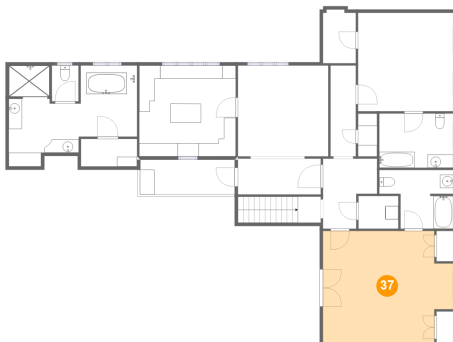
36 Floor 2 - WC



Dimensions: 4'0" x 5'5"
Area: 22 sq. ft
Counted as living area: Yes

Heated: Yes
Finished: Yes
Enclosed: Yes
Contiguous: Yes
Permitted: Yes
Wet space: Yes
Addition: No
Conversion: No

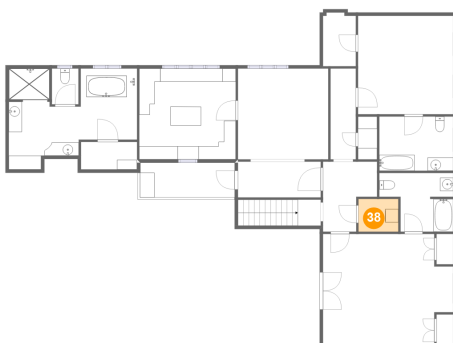
37 Floor 2 - Front Bedroom



Dimensions: 19'8" x 16'11"
Area: 304 sq. ft
Counted as living area: Yes

Heated: Yes
Finished: Yes
Enclosed: Yes
Contiguous: Yes
Permitted: Yes
Wet space: No
Addition: No
Conversion: No

38 Floor 2 - Laundry



Dimensions: 6'0" x 4'11"
Area: 30 sq. ft
Counted as living area: Yes

Heated: Yes
Finished: Yes
Enclosed: Yes
Contiguous: Yes
Permitted: Yes
Wet space: No
Addition: No
Conversion: No

Home report

843 17th Avenue North, Crescent Lake, St. Petersburg, Pinellas County, Florida, United States, 33704

39 Floor 2 - W.I.C.



Dimensions: 8'5" x 4'2"
Area: 35 sq. ft
Counted as living area: Yes

Heated: Yes
Finished: Yes
Enclosed: Yes
Contiguous: Yes
Permitted: Yes
Wet space: No
Addition: No
Conversion: No

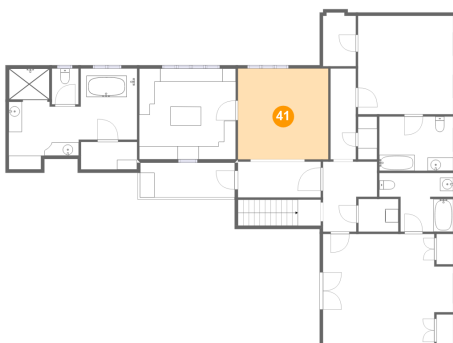
40 Floor 2 - W.I.C.



Dimensions: 5'0" x 8'1"
Area: 39 sq. ft
Counted as living area: Yes

Heated: Yes
Finished: Yes
Enclosed: Yes
Contiguous: Yes
Permitted: Yes
Wet space: No
Addition: No
Conversion: No

41 Floor 2 - Primary Bedroom



Dimensions: 13'8" x 13'9"
Area: 188 sq. ft
Counted as living area: Yes

Heated: Yes
Finished: Yes
Enclosed: Yes
Contiguous: Yes
Permitted: Yes
Wet space: No
Addition: No
Conversion: No

843 17th Avenue North, Crescent Lake, St. Petersburg, Pinellas
County, Florida, United States, 33704

42 Floor 2 - Bath



Dimensions: 11'2" x 8'11"
Area: 81 sq. ft
Counted as living area: Yes

Heated: Yes
Finished: Yes
Enclosed: Yes
Contiguous: Yes
Permitted: Yes
Wet space: Yes
Addition: No
Conversion: No

43 Floor 2 - Bath



Dimensions: 11'2" x 8'2"
Area: 92 sq. ft
Counted as living area: Yes

Heated: Yes
Finished: Yes
Enclosed: Yes
Contiguous: Yes
Permitted: Yes
Wet space: Yes
Addition: No
Conversion: No

44 Floor 2 - Hall



Dimensions: 3'10" x 13'9"
Area: 53 sq. ft
Counted as living area: Yes

Heated: Yes
Finished: Yes
Enclosed: Yes
Contiguous: Yes
Permitted: Yes
Wet space: No
Addition: No
Conversion: No