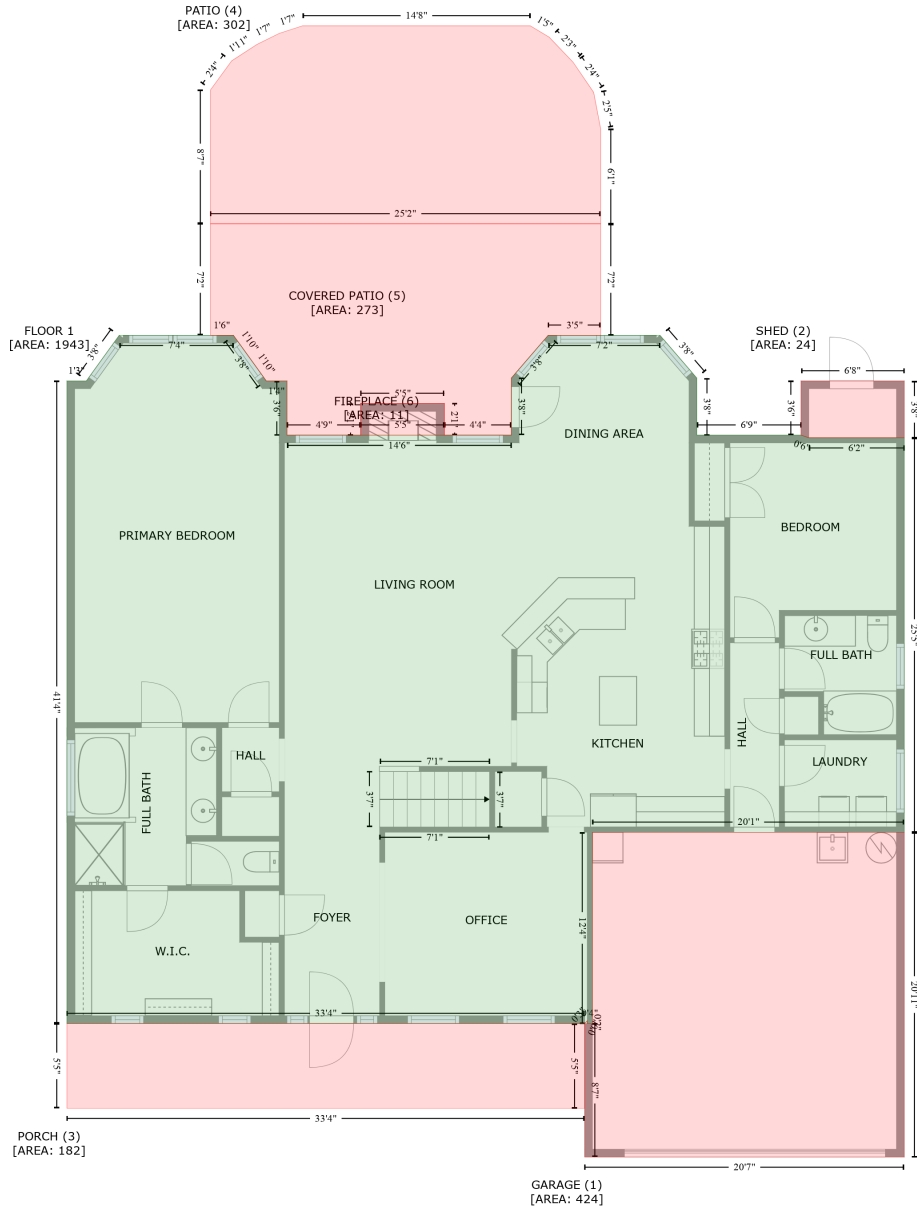


9733 Glenburn Lane, Berewick, Charlotte, Mecklenburg County, North Carolina, United States, 28278, 9727 glenburn lane charlotte nc

Gross Living Area: 2985 sq. ft



Space	Area (sq. ft)	Calculation <small>Coordinate Polygon Area Algorithm using inches</small>
FLOOR 1 (Living area)	1943	$ \begin{aligned} & -((289.7 + 315.2) * (123.6 - 158.9) + (315.2 + 331.1) * (158.9 - 158.9) + (331.1 + 331.1) * (158.9 - \\ & 200.8) + (331.1 + 504.7) * (200.8 - 200.8) + (504.7 + 504.7) * (200.8 - 156.7) + (504.7 + 533.2) * \\ & (156.7 - 123.6) + (533.2 + 619.6) * (123.6 - 123.6) + (619.6 + 648.1) * (123.6 - 156.7) + (648.1 + \\ & 648.1) * (156.7 - 200.8) + (648.1 + 728.7) * (200.8 - 200.8) + (728.7 + 734.7) * (200.8 - 202.8) + \\ & (734.7 + 808.5) * (202.8 - 202.8) + (808.5 + 808.5) * (202.8 - 507.5) + (808.5 + 567.4) * (507.5 - \\ & 507.5) + (567.4 + 567.4) * (507.5 - 655.2) + (567.4 + 563.4) * (655.2 - 655.2) + (563.4 + 563.4) * \\ & (655.2 - 653.1) + (563.4 + 561.4) * (653.1 - 655.2) + (561.4 + 161) * (655.2 - 655.2) + (161 + 161) \end{aligned} $

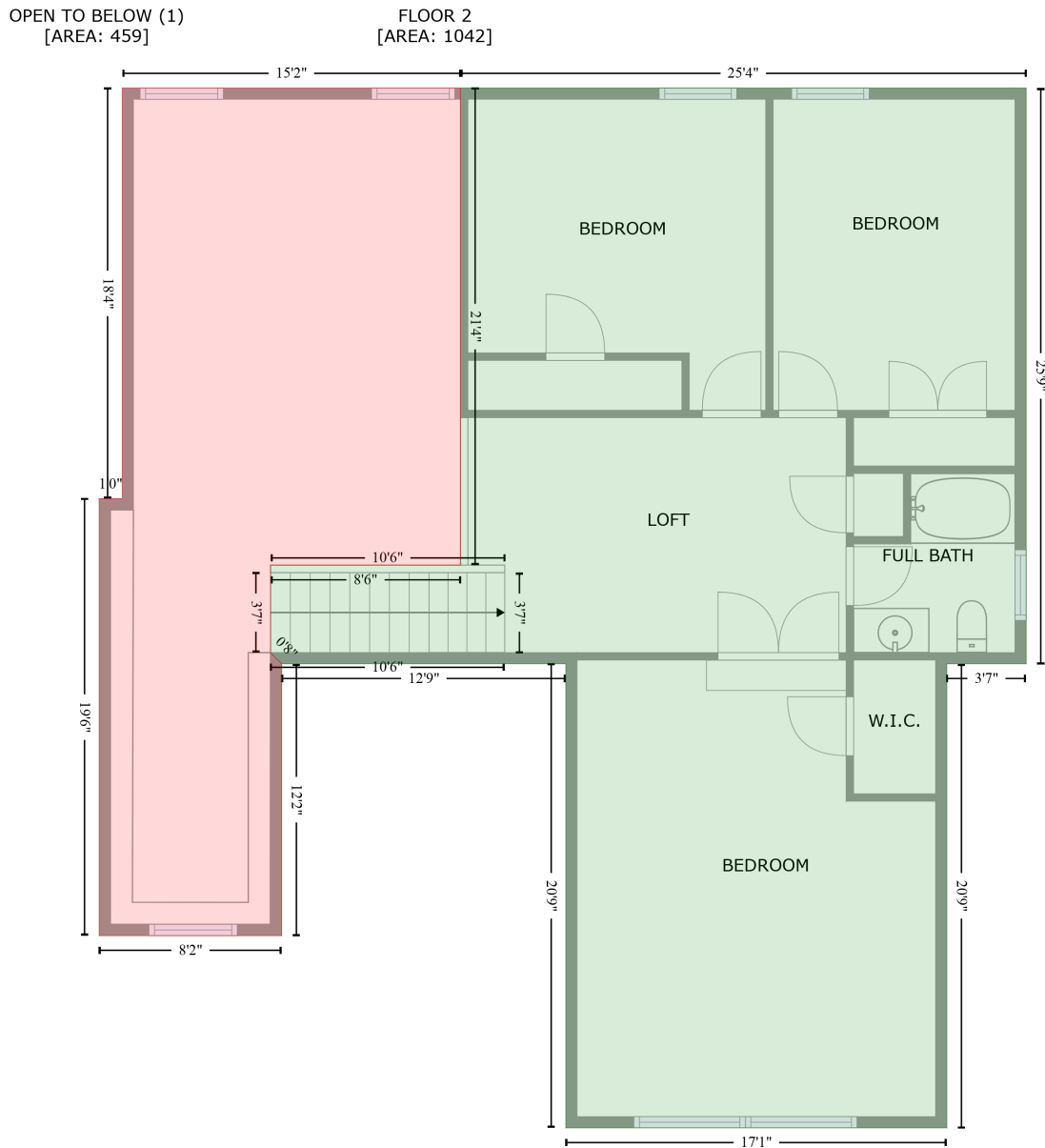
9733 Glenburn Lane, Berewick, Charlotte, Mecklenburg County, North Carolina, United States, 28278, 9727 glenburn lane charlotte nc

Gross Living Area: 2985 sq. ft

Space	Area (sq. ft)	Calculation <small>Coordinate Polygon Area Algorithm using inches</small>
		$*(655.2 - 158.9) + (161 + 176) * (158.9 - 158.9) + (176 + 201.4) * (158.9 - 123.6) + (201.4 + 289.7) * (123.6 - 123.6)) * 0.5 * 0.00694$
GARAGE (Non-living area)	424	$-((808.5 + 808.5) * (507.5 - 758.3) + (808.5 + 561.4) * (758.3 - 758.3) + (561.4 + 561.4) * (758.3 - 655.2) + (561.4 + 561.4) * (655.2 - 655.1) + (561.4 + 563.4) * (655.1 - 653.1) + (563.4 + 563.4) * (653.1 - 655.2) + (563.4 + 567.4) * (655.2 - 655.2) + (567.4 + 567.4) * (655.2 - 507.5) + (567.4 + 808.5) * (507.5 - 507.5)) * 0.5 * 0.00694$
SHED (Non-living area)	24	$-((808.5 + 808.5) * (158.9 - 202.8) + (808.5 + 734.7) * (202.8 - 202.8) + (734.7 + 728.7) * (202.8 - 200.8) + (728.7 + 728.7) * (200.8 - 158.9) + (728.7 + 808.5) * (158.9 - 158.9)) * 0.5 * 0.00694$
PORCH (Non-living area)	182	$-((561.4 + 561.4) * (655.2 - 720.7) + (561.4 + 161) * (720.7 - 720.7) + (161 + 161) * (720.7 - 655.2) + (161 + 561.4) * (655.2 - 655.2)) * 0.5 * 0.00694$
PATIO (Non-living area)	302	$-((519.3 + 533.9) * (-115.4 - -106.6) + (533.9 + 552.4) * (-106.6 - -87.3) + (552.4 + 568.3) * (-87.3 - -64) + (568.3 + 573.7) * (-64 - -35.9) + (573.7 + 573.7) * (-35.9 - 37.5) + (573.7 + 272) * (37.5 - 37.5) + (272 + 272) * (37.5 - -65.8) + (272 + 288.4) * (-65.8 - -88.3) + (288.4 + 308) * (-88.3 - -101.1) + (308 + 325.2) * (-101.1 - -109.5) + (325.2 + 343.2) * (-109.5 - -115.4) + (343.2 + 519.3) * (-115.4 - -115.4)) * 0.5 * 0.00694$
COVERED PATIO (Non-living area)	273	$-((573.7 + 573.7) * (37.5 - 123.6) + (573.7 + 533.2) * (123.6 - 123.6) + (533.2 + 504.7) * (123.6 - 156.7) + (504.7 + 504.7) * (156.7 - 200.8) + (504.7 + 452.9) * (200.8 - 200.8) + (452.9 + 452.9) * (200.8 - 176.2) + (452.9 + 388.1) * (176.2 - 176.2) + (388.1 + 388.1) * (176.2 - 200.8) + (388.1 + 331.1) * (200.8 - 200.8) + (331.1 + 331.1) * (200.8 - 158.9) + (331.1 + 315.2) * (158.9 - 158.9) + (315.2 + 302.4) * (158.9 - 141.3) + (302.4 + 289.7) * (141.3 - 123.6) + (289.7 + 272) * (123.6 - 123.6) + (272 + 272) * (123.6 - 37.5) + (272 + 573.7) * (37.5 - 37.5)) * 0.5 * 0.00694$
FIREPLACE (Non-living area)	11	$-((452.9 + 452.9) * (176.2 - 200.8) + (452.9 + 388.1) * (200.8 - 200.8) + (388.1 + 388.1) * (200.8 - 176.2) + (388.1 + 452.9) * (176.2 - 176.2)) * 0.5 * 0.00694$

9733 Glenburn Lane, Berewick, Charlotte, Mecklenburg County, North Carolina, United States, 28278, 9727 glenburn lane charlotte nc

Gross Living Area: 2985 sq. ft



Space	Area (sq. ft)	Calculation <small>Coordinate Polygon Area Algorithm using inches</small>
FLOOR 2 (Living area)	1042	$-\left((808.5 + 808.5) * (200.8 - 509.5) + (808.5 + 765.9) * (509.5 - 509.5) + (765.9 + 765.9) * (509.5 - 758.3) + (765.9 + 561.4) * (758.3 - 758.3) + (561.4 + 561.4) * (758.3 - 509.5) + (561.4 + 408.8) * (509.5 - 509.5) + (408.8 + 402.8) * (509.5 - 503.5) + (402.8 + 402.8) * (503.5 - 456.6) + (402.8 + 504.8) * (456.6 - 456.6) + (504.8 + 504.8) * (456.6 - 200.8) + (504.8 + 808.5) * (200.8 - 200.8)\right) * 0.5 * 0.00694$
OPEN TO BELOW	459	$-\left((504.8 + 504.8) * (200.8 - 456.6) + (504.8 + 402.8) * (456.6 - 456.6) + (402.8 + 402.8) * (456.6 - 456.6)\right)$

9733 Glenburn Lane, Berewick, Charlotte, Mecklenburg County, North Carolina, United States, 28278, 9727 glenburn lane charlotte nc

Gross Living Area: 2985 sq. ft

Space	Area (sq. ft)	Calculation <small>Coordinate Polygon Area Algorithm using inches</small>
(Non-living area)		$503.5 + (402.8 + 408.8) * (503.5 - 509.5) + (408.8 + 408.8) * (509.5 - 655.2) + (408.8 + 310.8) * (655.2 - 655.2) + (310.8 + 310.8) * (655.2 - 420.9) + (310.8 + 323.2) * (420.9 - 420.9) + (323.2 + 323.2) * (420.9 - 200.8) + (323.2 + 504.8) * (200.8 - 200.8) * 0.5 * 0.00694$