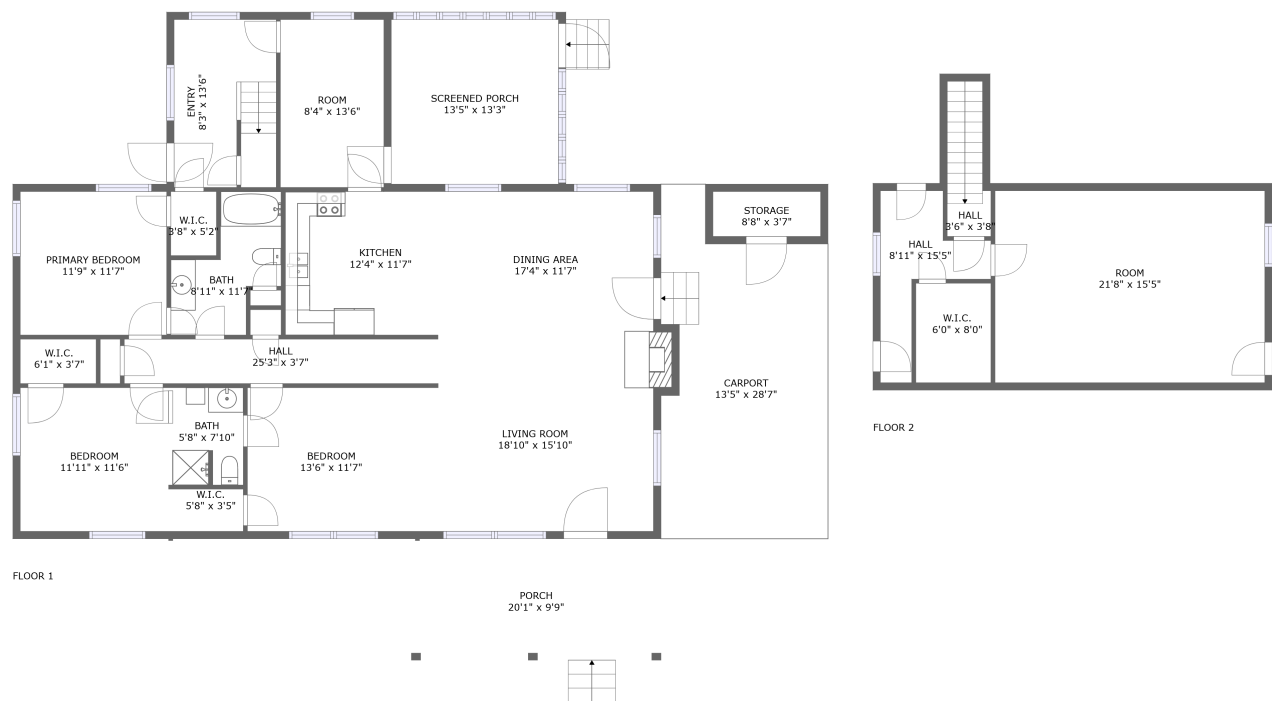


Home report

1052 Walker Lane, Moores Mill, New Market, Madison County, Alabama, United States, 35761



**Total GLA: 2230 sq. ft**

Floor 1: 1731 sq. ft, Floor 2: 499 sq. ft

Excluded: Storage 47 sq. ft, Screened porch 195 sq. ft, Porch 197 sq. ft, Carport 328 sq. ft, Fireplace 8 sq. ft, Low ceiling 72 sq. ft

Property summary

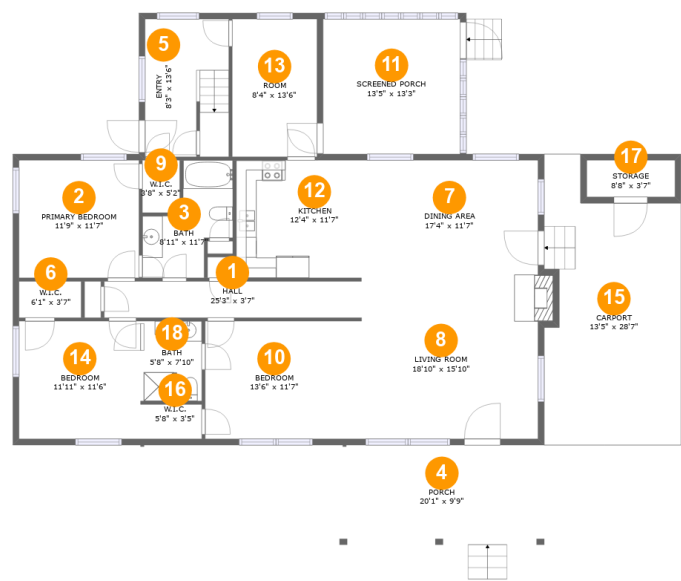
 **2** Floors

 **3** Bedrooms

 **2** Bathrooms

Home report

1052 Walker Lane, Moores Mill, New Market, Madison County, Alabama, United States, 35761



Room dimensions

Floor 1

Total:1731sqft   Excluded: 775sqft

| #  |                 | Max Dimensions  | sqft       | Included |
|----|-----------------|-----------------|------------|----------|
| 1  | Hall            | 25'3" x 3'7"    | 90 sq. ft  | Yes      |
| 2  | Primary Bedroom | 11'9" x 11'7"   | 136 sq. ft | Yes      |
| 3  | Bath            | 8'11" x 11'7"   | 69 sq. ft  | Yes      |
| 4  | Porch           | 20'1" x 9'9"    | 197 sq. ft | No       |
| 5  | Entry           | 8'3" x 13'6"    | 109 sq. ft | Yes      |
| 6  | W.I.C.          | 6'1" x 3'7"     | 22 sq. ft  | Yes      |
| 7  | Dining Area     | 17'4" x 11'7"   | 201 sq. ft | Yes      |
| 8  | Living Room     | 18'10" x 15'10" | 297 sq. ft | Yes      |
| 9  | W.I.C.          | 3'8" x 5'2"     | 19 sq. ft  | Yes      |
| 10 | Bedroom         | 13'6" x 11'7"   | 156 sq. ft | Yes      |
| 11 | Screened Porch  | 13'5" x 13'3"   | 178 sq. ft | No       |

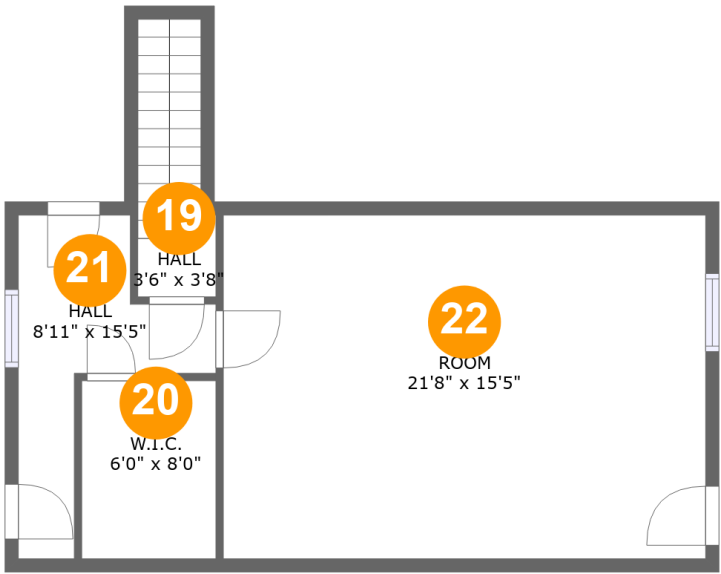
## Home report

**1052 Walker Lane, Moores Mill, New Market, Madison County,  
Alabama, United States, 35761**

| #  |         | Max Dimensions | sqft       | Included |
|----|---------|----------------|------------|----------|
| 12 | Kitchen | 12'4" x 11'7"  | 142 sq. ft | Yes      |
| 13 | Room    | 8'4" x 13'6"   | 112 sq. ft | Yes      |
| 14 | Bedroom | 11'11" x 11'6" | 138 sq. ft | Yes      |
| 15 | Carport | 13'5" x 28'7"  | 328 sq. ft | No       |
| 16 | W.I.C.  | 5'8" x 3'5"    | 19 sq. ft  | Yes      |
| 17 | Storage | 8'8" x 3'7"    | 31 sq. ft  | No       |
| 18 | Bath    | 5'8" x 7'10"   | 44 sq. ft  | Yes      |

Home report

1052 Walker Lane, Moores Mill, New Market, Madison County, Alabama, United States, 35761

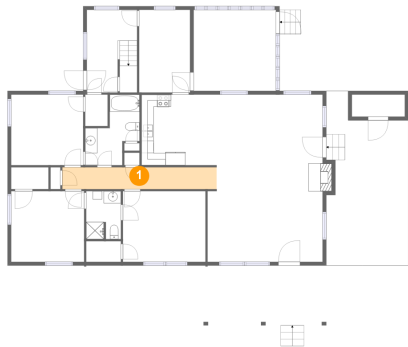


Room dimensions

Floor 2 Total:499sqft   Excluded: 72sqft

| #  |        | Max Dimensions | sqft       | Included |
|----|--------|----------------|------------|----------|
| 19 | Hall   | 3'6" x 3'8"    | 38 sq. ft  | Yes      |
| 20 | W.I.C. | 6'0" x 8'0"    | 38 sq. ft  | Yes      |
| 21 | Hall   | 8'11" x 15'5"  | 65 sq. ft  | Yes      |
| 22 | Room   | 21'8" x 15'5"  | 299 sq. ft | Yes      |

1 Floor 1 - Hall



Max Dimensions: 25'3" x 3'7"  
Calculated Area: 90 sq. ft  
Included: Yes

Heated: Yes  
Finished: Yes  
Enclosed: Yes  
Contiguous: Yes  
Permitted: Yes  
Wet space: No  
Addition: No  
Conversion: No

2 Floor 1 - Primary Bedroom



Max Dimensions: 11'9" x 11'7"  
Calculated Area: 136 sq. ft  
Included: Yes

Heated: Yes  
Finished: Yes  
Enclosed: Yes  
Contiguous: Yes  
Permitted: Yes  
Wet space: No  
Addition: No  
Conversion: No

1052 Walker Lane, Moores Mill, New Market, Madison County, Alabama, United States, 35761

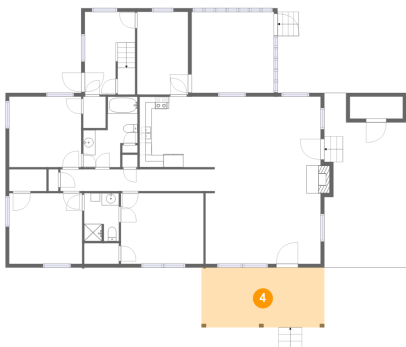
3 Floor 1 - Bath



Max Dimensions: 8'11" x 11'7"  
Calculated Area: 69 sq. ft  
Included: Yes

Heated: Yes  
Finished: Yes  
Enclosed: Yes  
Contiguous: Yes  
Permitted: Yes  
Wet space: Yes  
Addition: No  
Conversion: No

4 Floor 1 - Porch



Max Dimensions: 20'1" x 9'9"  
Calculated Area: 197 sq. ft  
Included: No

Heated: No  
Finished: Yes  
Enclosed: No  
Contiguous: Yes  
Permitted: Yes  
Wet space: No  
Addition: No  
Conversion: No

5 Floor 1 - Entry



Max Dimensions: 8'3" x 13'6"  
Calculated Area: 109 sq. ft  
Included: Yes

Heated: Yes  
Finished: Yes  
Enclosed: Yes  
Contiguous: Yes  
Permitted: Yes  
Wet space: No  
Addition: No  
Conversion: No

1052 Walker Lane, Moores Mill, New Market, Madison County, Alabama, United States, 35761

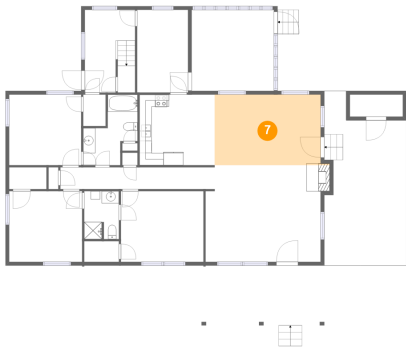
6 Floor 1 - W.I.C.



Max Dimensions: 6'1" x 3'7"  
Calculated Area: 22 sq. ft  
Included: Yes

Heated: Yes  
Finished: Yes  
Enclosed: Yes  
Contiguous: Yes  
Permitted: Yes  
Wet space: No  
Addition: No  
Conversion: No

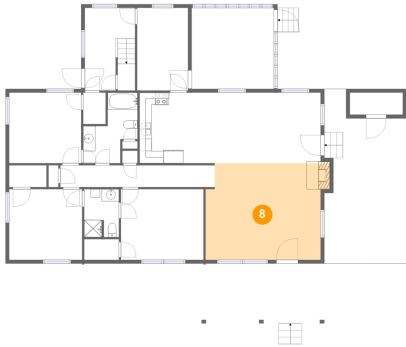
7 Floor 1 - Dining Area



Max Dimensions: 17'4" x 11'7"  
Calculated Area: 201 sq. ft  
Included: Yes

Heated: Yes  
Finished: Yes  
Enclosed: Yes  
Contiguous: Yes  
Permitted: Yes  
Wet space: No  
Addition: No  
Conversion: No

8 Floor 1 - Living Room



Max Dimensions: 18'10" x 15'10"  
Calculated Area: 297 sq. ft  
Included: Yes

Heated: Yes  
Finished: Yes  
Enclosed: Yes  
Contiguous: Yes  
Permitted: Yes  
Wet space: No  
Addition: No  
Conversion: No

9 Floor 1 - W.I.C.



Max Dimensions: 3'8" x 5'2"  
Calculated Area: 19 sq. ft  
Included: Yes

Heated: Yes  
Finished: Yes  
Enclosed: Yes  
Contiguous: Yes  
Permitted: Yes  
Wet space: No  
Addition: No  
Conversion: No

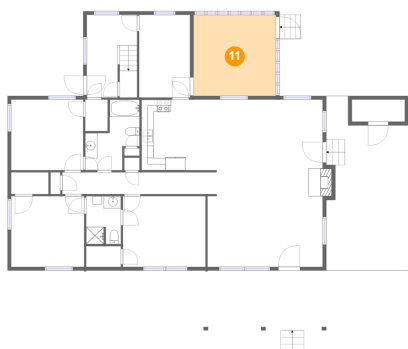
10 Floor 1 - Bedroom



Max Dimensions: 13'6" x 11'7"  
Calculated Area: 156 sq. ft  
Included: Yes

Heated: Yes  
Finished: Yes  
Enclosed: Yes  
Contiguous: Yes  
Permitted: Yes  
Wet space: No  
Addition: No  
Conversion: No

11 Floor 1 - Screened Porch



Max Dimensions: 13'5" x 13'3"  
Calculated Area: 178 sq. ft  
Included: No

Heated: No  
Finished: Yes  
Enclosed: No  
Contiguous: Yes  
Permitted: Yes  
Wet space: No  
Addition: No  
Conversion: No



1052 Walker Lane, Moores Mill, New Market, Madison County, Alabama, United States, 35761

12 Floor 1 - Kitchen



Max Dimensions: 12'4" x 11'7"  
Calculated Area: 142 sq. ft  
Included: Yes

Heated: Yes  
Finished: Yes  
Enclosed: Yes  
Contiguous: Yes  
Permitted: Yes  
Wet space: No  
Addition: No  
Conversion: No

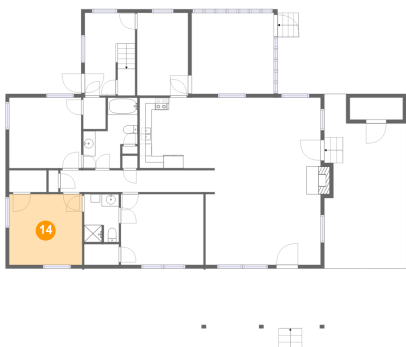
13 Floor 1 - Room



Max Dimensions: 8'4" x 13'6"  
Calculated Area: 112 sq. ft  
Included: Yes

Heated: Yes  
Finished: Yes  
Enclosed: Yes  
Contiguous: Yes  
Permitted: Yes  
Wet space: No  
Addition: No  
Conversion: No

14 Floor 1 - Bedroom



Max Dimensions: 11'11" x 11'6"  
Calculated Area: 138 sq. ft  
Included: Yes

Heated: Yes  
Finished: Yes  
Enclosed: Yes  
Contiguous: Yes  
Permitted: Yes  
Wet space: No  
Addition: No  
Conversion: No

1052 Walker Lane, Moores Mill, New Market, Madison County,  
Alabama, United States, 35761

15 Floor 1 - Carport



Max Dimensions: 13'5" x 28'7"  
Calculated Area: 328 sq. ft  
Included: No

Heated: No  
Finished: Yes  
Enclosed: No  
Contiguous: Yes  
Permitted: Yes  
Wet space: No  
Addition: No  
Conversion: No

16 Floor 1 - W.I.C.



Max Dimensions: 5'8" x 3'5"  
Calculated Area: 19 sq. ft  
Included: Yes

Heated: Yes  
Finished: Yes  
Enclosed: Yes  
Contiguous: Yes  
Permitted: Yes  
Wet space: No  
Addition: No  
Conversion: No

17 Floor 1 - Storage



Max Dimensions: 8'8" x 3'7"  
Calculated Area: 31 sq. ft  
Included: No

Heated: No  
Finished: No  
Enclosed: No  
Contiguous: Yes  
Permitted: Yes  
Wet space: No  
Addition: No  
Conversion: No

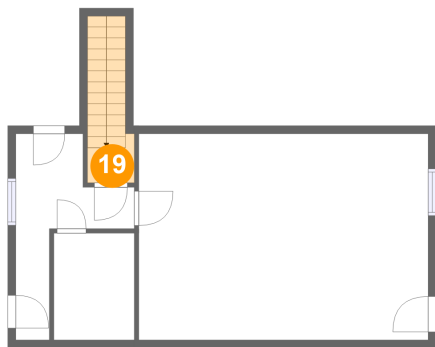
18 Floor 1 - Bath



Max Dimensions: 5'8" x 7'10"  
Calculated Area: 44 sq. ft  
Included: Yes

Heated: Yes  
Finished: Yes  
Enclosed: Yes  
Contiguous: Yes  
Permitted: Yes  
Wet space: Yes  
Addition: No  
Conversion: No

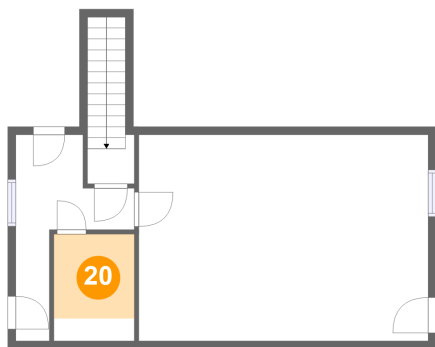
19 Floor 2 - Hall



Max Dimensions: 3'6" x 3'8"  
Calculated Area: 38 sq. ft  
Included: Yes

Heated: Yes  
Finished: Yes  
Enclosed: Yes  
Contiguous: Yes  
Permitted: Yes  
Wet space: No  
Addition: No  
Conversion: No

20 Floor 2 - W.I.C.

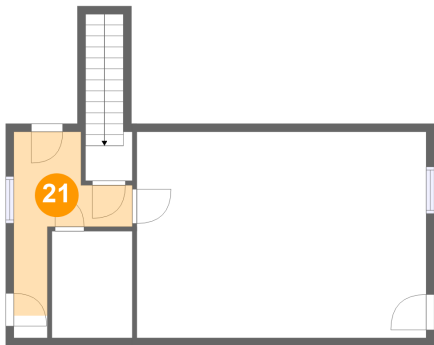


Max Dimensions: 6'0" x 8'0"  
Calculated Area: 38 sq. ft  
Included: Yes

Heated: Yes  
Finished: Yes  
Enclosed: Yes  
Contiguous: Yes  
Permitted: Yes  
Wet space: No  
Addition: No  
Conversion: No

1052 Walker Lane, Moores Mill, New Market, Madison County,  
Alabama, United States, 35761

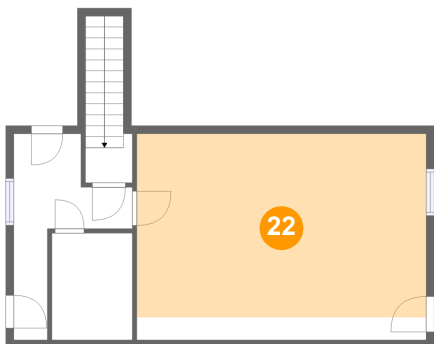
21 Floor 2 - Hall



Max Dimensions: 8'11" x 15'5"  
Calculated Area: 65 sq. ft  
Included: Yes

Heated: Yes  
Finished: Yes  
Enclosed: Yes  
Contiguous: Yes  
Permitted: Yes  
Wet space: No  
Addition: No  
Conversion: No

22 Floor 2 - Room



Max Dimensions: 21'8" x 15'5"  
Calculated Area: 299 sq. ft  
Included: Yes

Heated: Yes  
Finished: Yes  
Enclosed: Yes  
Contiguous: Yes  
Permitted: Yes  
Wet space: No  
Addition: No  
Conversion: No