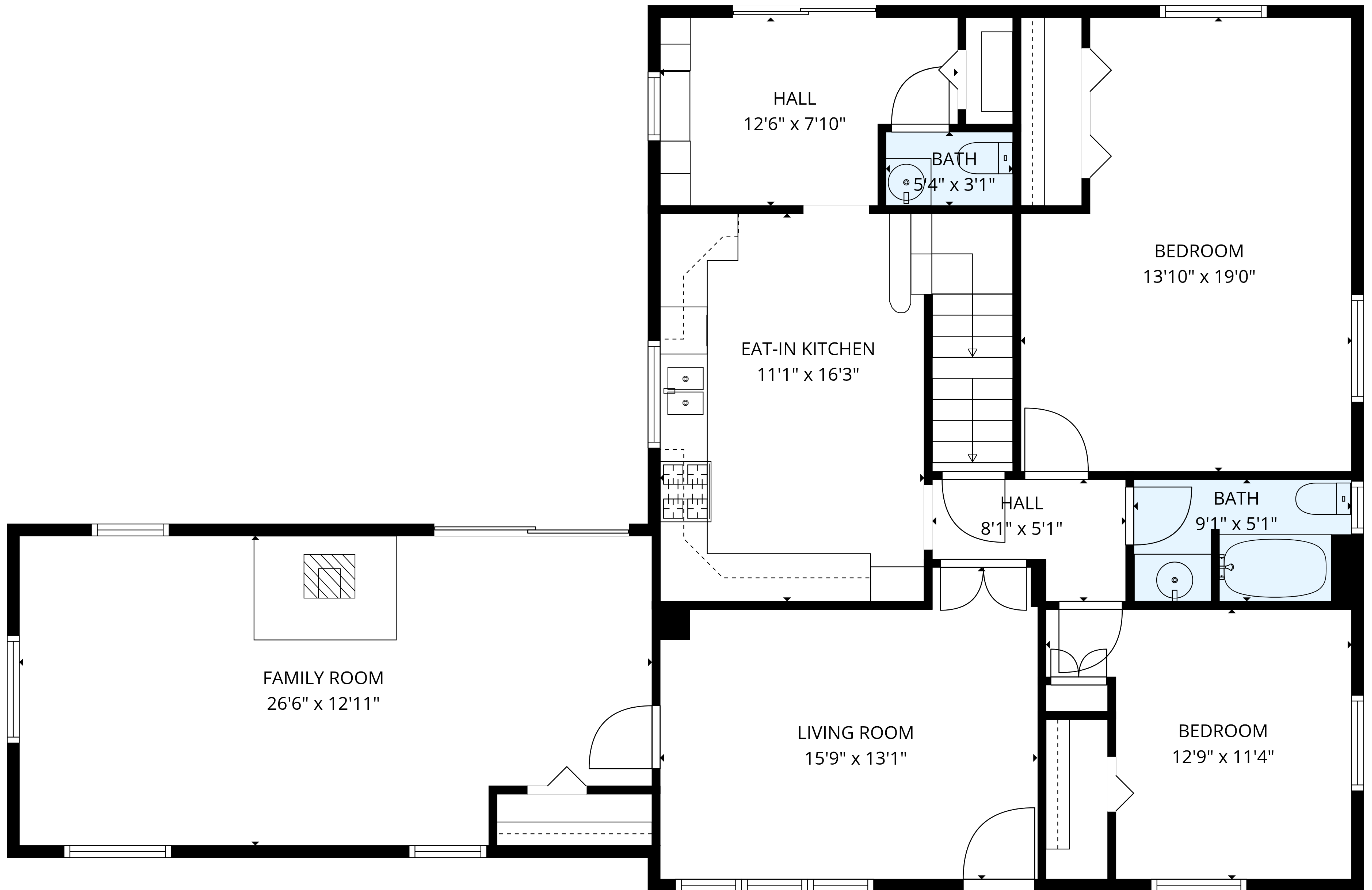


BASEMENT
28'11" x 27'10"

TOTAL: 1779 sq. ft
BELOW GRADE: 0 sq. ft, FLOOR 2: 1390 sq. ft, FLOOR 3: 389 sq. ft
EXCLUDED AREAS: BASEMENT: 806 sq. ft, LOW CEILING: 40 sq. ft, WALLS: 192 sq. ft

MEASUREMENTS ARE DEEMED RELIABLE BUT ARE NOT GUARANTEED.

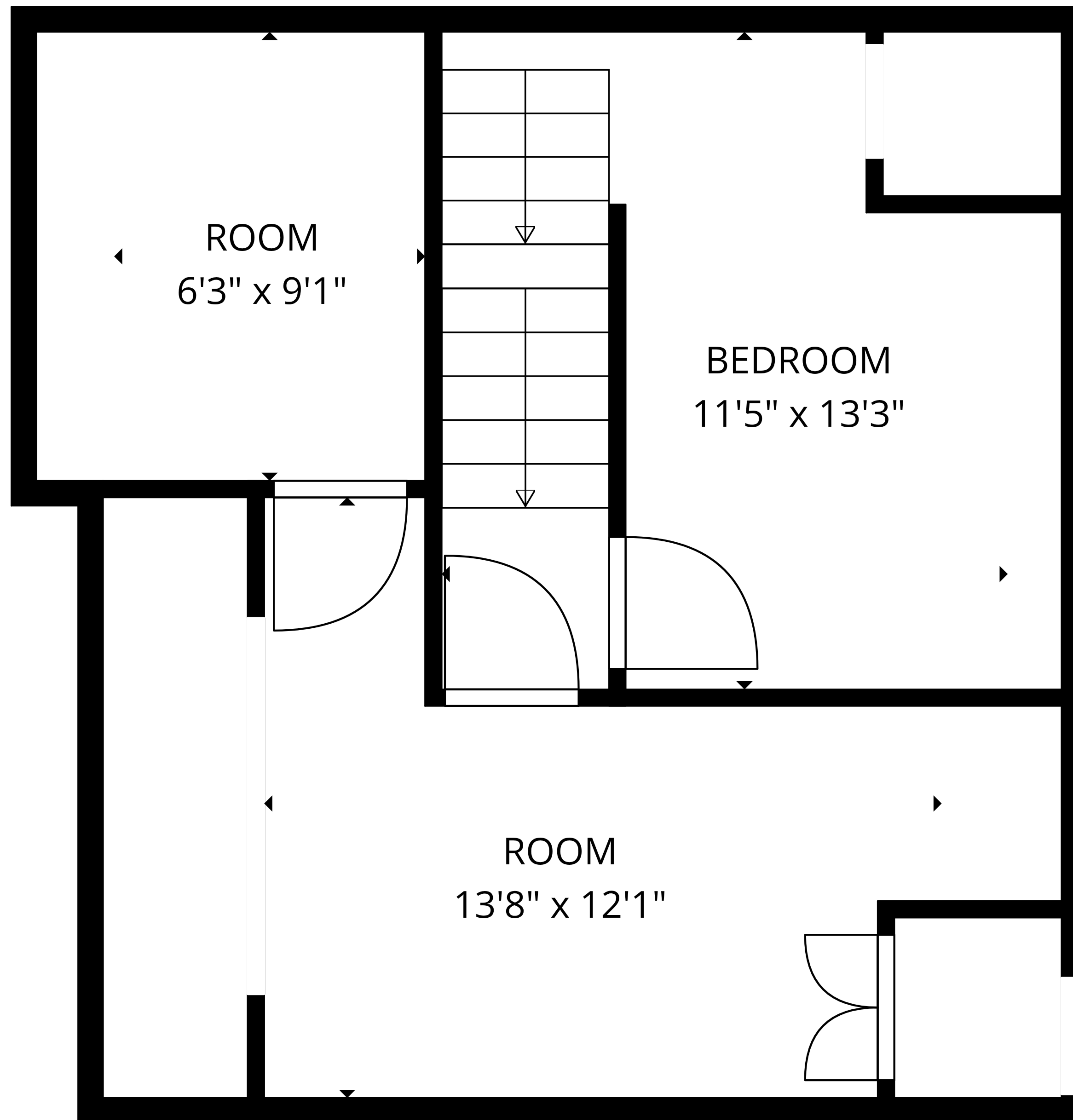


TOTAL: 1779 sq. ft

BELOW GRADE: 0 sq. ft, FLOOR 2: 1390 sq. ft, FLOOR 3: 389 sq. ft

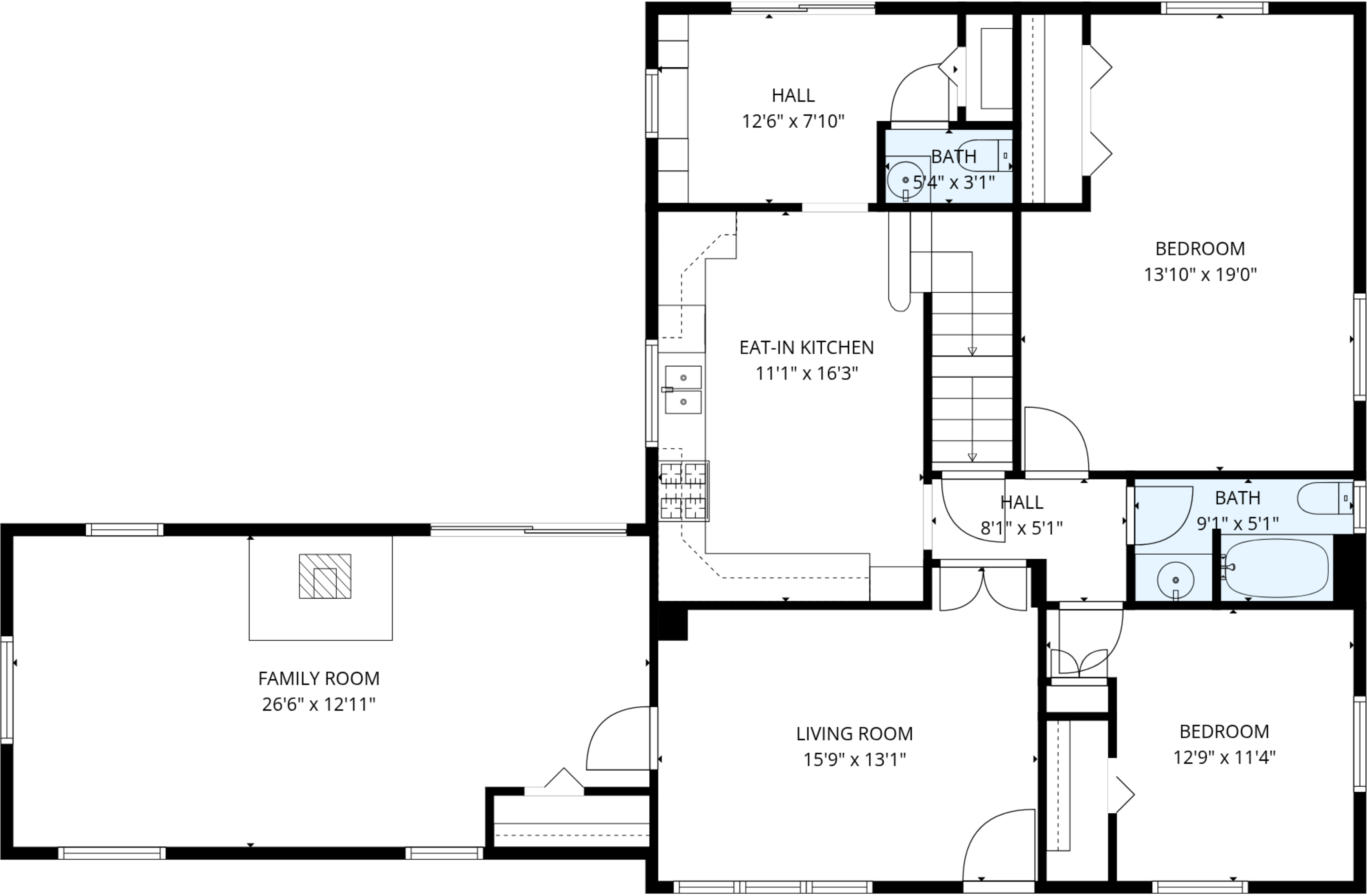
EXCLUDED AREAS: BASEMENT: 806 sq. ft, LOW CEILING: 40 sq. ft, WALLS: 192 sq. ft

MEASUREMENTS ARE DEEMED RELIABLE BUT ARE NOT GUARANTEED.

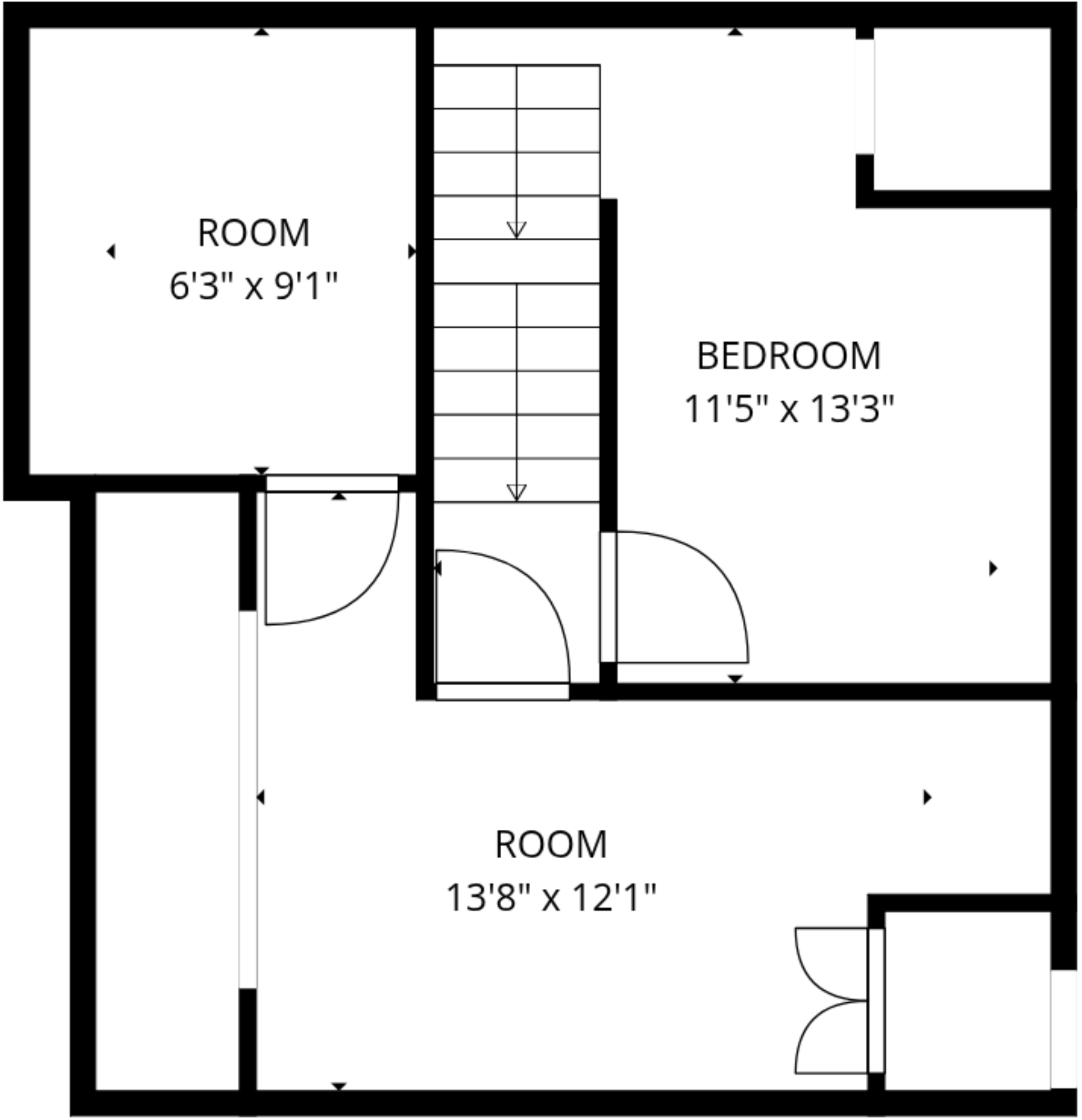


TOTAL: 1779 sq. ft
BELOW GRADE: 0 sq. ft, FLOOR 2: 1390 sq. ft, FLOOR 3: 389 sq. ft
EXCLUDED AREAS: BASEMENT: 806 sq. ft, LOW CEILING: 40 sq. ft, WALLS: 192 sq. ft

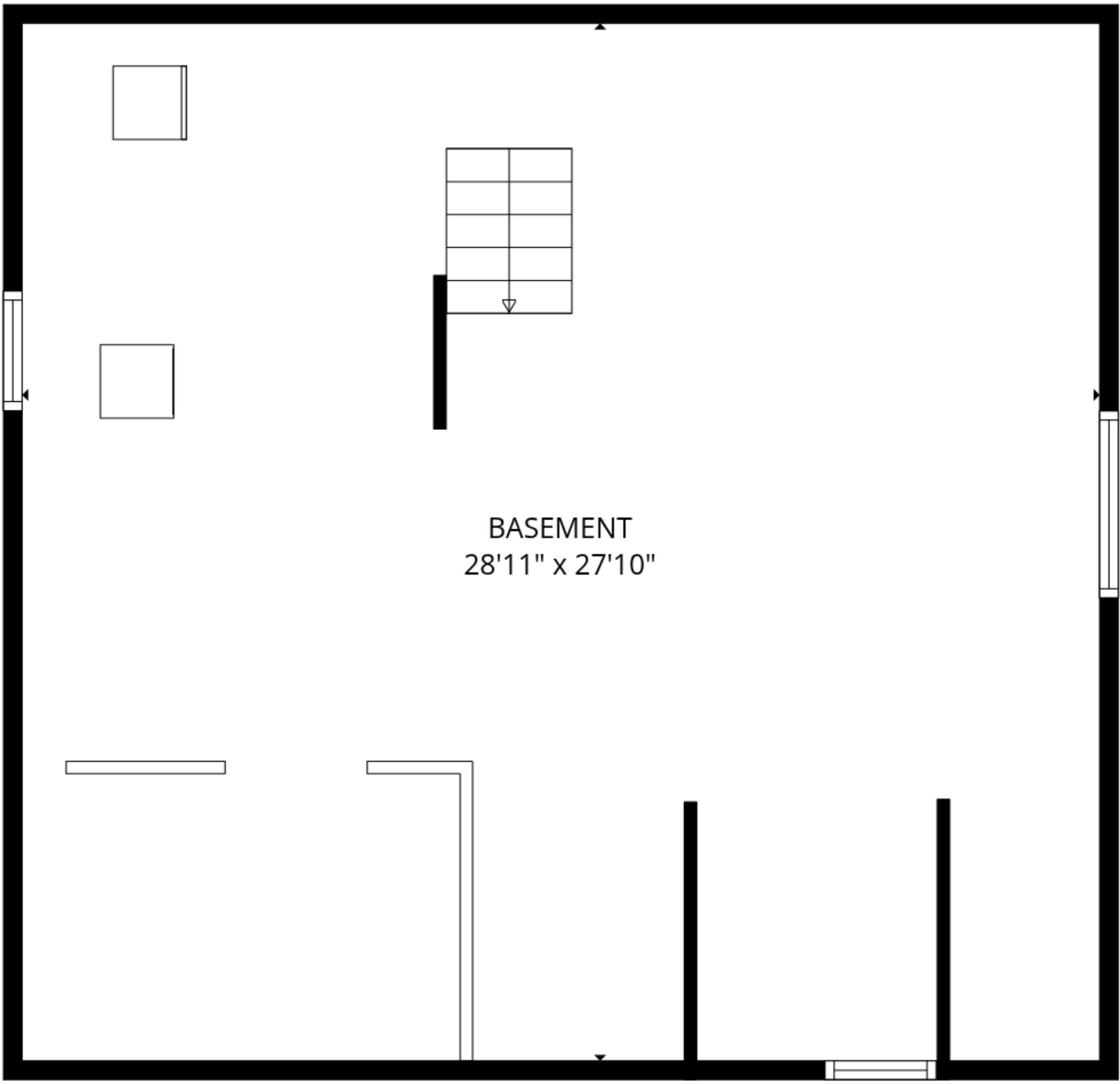
MEASUREMENTS ARE DEEMED RELIABLE BUT ARE NOT GUARANTEED.



FLOOR 2



FLOOR 3



FLOOR 1

TOTAL: 1779 sq. ft
BELOW GRADE: 0 sq. ft, FLOOR 2: 1390 sq. ft, FLOOR 3: 389 sq. ft
EXCLUDED AREAS: BASEMENT: 806 sq. ft, LOW CEILING: 40 sq. ft, WALLS: 192 sq. ft

MEASUREMENTS ARE DEEMED RELIABLE BUT ARE NOT GUARANTEED.