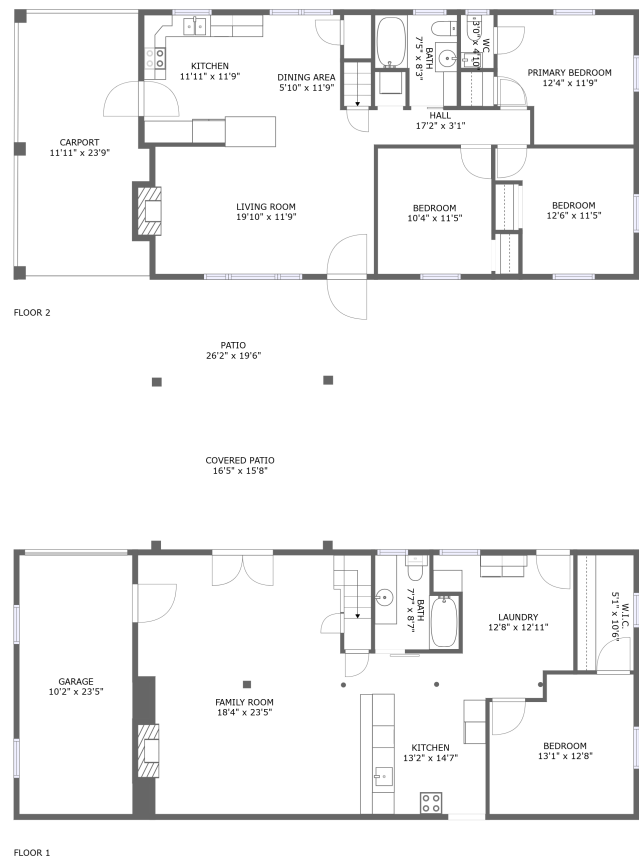


Home report

106 Mayfield Drive, Mayfield, Lynchburg, Lynchburg city,
Virginia, United States, 24502



Total Area: 2198 sq. ft

Floor 1: 1102 sq. ft, Floor 2: 1096 sq. ft

Excluded: Garage 273 sq. ft, Outdoor Patio Covered 257 sq. ft, Outdoor Patio 254 sq. ft, Fireplace 17 sq. ft, Carport 263 sq. ft

Property summary

 **2** Floors

 **4** Bedrooms

 **2** Bathrooms

Home report

**106 Mayfield Drive, Mayfield, Lynchburg, Lynchburg city,
Virginia, United States, 24502**



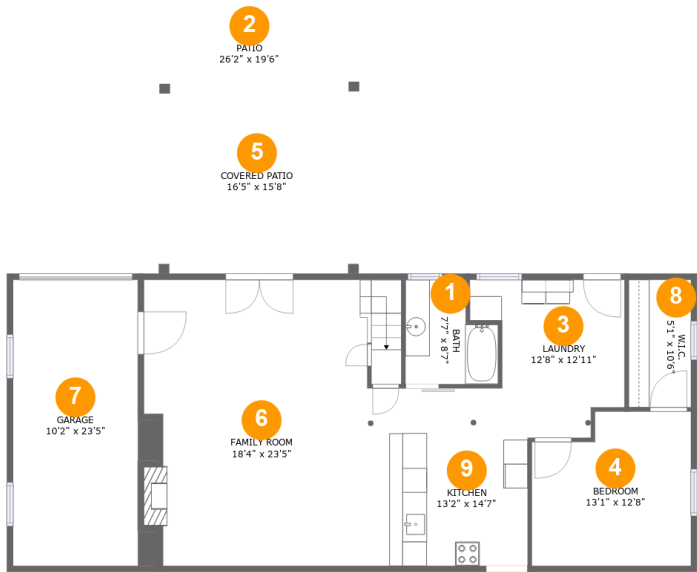
1
Half baths



1
Garages

Home report

106 Mayfield Drive, Mayfield, Lynchburg, Lynchburg city,
Virginia, United States, 24502



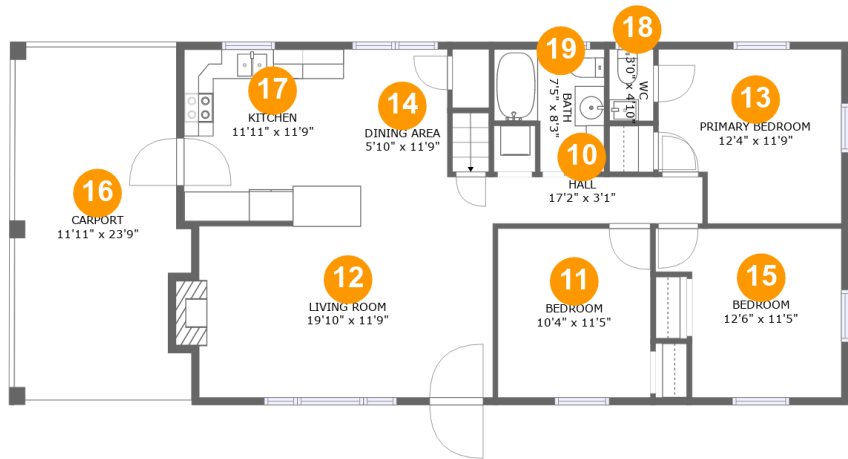
Room dimensions

Floor 1 Total:1102sqft Excluded: 793sqft

#		Max Dimensions	sqft	Included
1	Bath	7'7" x 8'7"	55 sq. ft	Yes
2	Patio	26'2" x 19'6"	254 sq. ft	No
3	Laundry	12'8" x 12'11"	128 sq. ft	Yes
4	Bedroom	13'1" x 12'8"	152 sq. ft	Yes
5	Covered Patio	16'5" x 15'8"	257 sq. ft	No
6	Family Room	18'4" x 23'5"	441 sq. ft	Yes
7	Garage	10'2" x 23'5"	250 sq. ft	No
8	W.I.C.	5'1" x 10'6"	54 sq. ft	Yes
9	Kitchen	13'2" x 14'7"	187 sq. ft	Yes

Home report

106 Mayfield Drive, Mayfield, Lynchburg, Lynchburg city,
Virginia, United States, 24502



Room dimensions

Floor 2 Total:1096sqft Excluded: 271sqft

#		Max Dimensions	sqft	Included
10	Hall	17'2" x 3'1"	54 sq. ft	Yes
11	Bedroom	10'4" x 11'5"	117 sq. ft	Yes
12	Living Room	19'10" x 11'9"	238 sq. ft	Yes
13	Primary Bedroom	12'4" x 11'9"	133 sq. ft	Yes
14	Dining Area	5'10" x 11'9"	69 sq. ft	Yes
15	Bedroom	12'6" x 11'5"	122 sq. ft	Yes
16	Carport	11'11" x 23'9"	263 sq. ft	No
17	Kitchen	11'11" x 11'9"	139 sq. ft	Yes
18	WC	3'0" x 4'10"	14 sq. ft	Yes
19	Bath	7'5" x 8'3"	51 sq. ft	Yes

106 Mayfield Drive, Mayfield, Lynchburg, Lynchburg city,
Virginia, United States, 24502

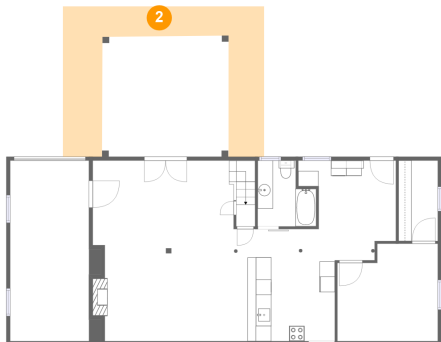
1 Floor 1 - Bath



Max Dimensions: 7'7" x 8'7"
Calculated Area: 55 sq. ft
Included: Yes

Heated: Yes
Finished: Yes
Enclosed: Yes
Contiguous: Yes
Permitted: Yes
Wet space: Yes
Addition: No
Conversion: No

2 Floor 1 - Patio



Max Dimensions: 26'2" x 19'6"
Calculated Area: 254 sq. ft
Included: No

Heated: No
Finished: Yes
Enclosed: No
Contiguous: Yes
Permitted: Yes
Wet space: No
Addition: No
Conversion: No

106 Mayfield Drive, Mayfield, Lynchburg, Lynchburg city,
Virginia, United States, 24502

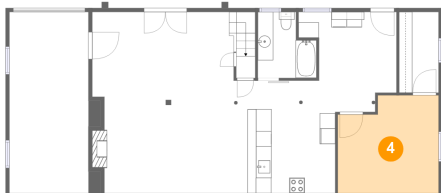
3 Floor 1 - Laundry



Max Dimensions: 12'8" x 12'11"
Calculated Area: 128 sq. ft
Included: Yes

Heated: Yes
Finished: Yes
Enclosed: Yes
Contiguous: Yes
Permitted: Yes
Wet space: No
Addition: No
Conversion: No

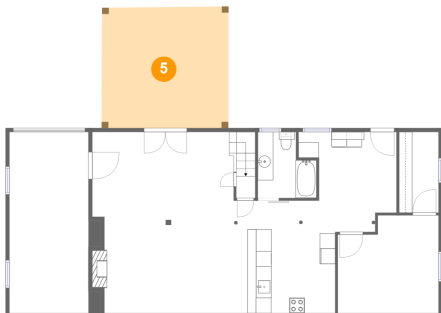
4 Floor 1 - Bedroom



Max Dimensions: 13'1" x 12'8"
Calculated Area: 152 sq. ft
Included: Yes

Heated: Yes
Finished: Yes
Enclosed: Yes
Contiguous: Yes
Permitted: Yes
Wet space: No
Addition: No
Conversion: No

5 Floor 1 - Covered Patio



Max Dimensions: 16'5" x 15'8"
Calculated Area: 257 sq. ft
Included: No

Heated: No
Finished: Yes
Enclosed: No
Contiguous: Yes
Permitted: Yes
Wet space: No
Addition: No
Conversion: No

106 Mayfield Drive, Mayfield, Lynchburg, Lynchburg city,
Virginia, United States, 24502

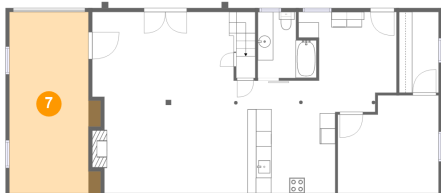
6 Floor 1 - Family Room



Max Dimensions: 18'4" x 23'5"
Calculated Area: 441 sq. ft
Included: Yes

Heated: Yes
Finished: Yes
Enclosed: Yes
Contiguous: Yes
Permitted: Yes
Wet space: No
Addition: No
Conversion: No

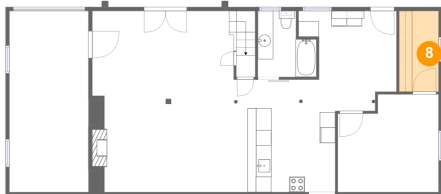
7 Floor 1 - Garage



Max Dimensions: 10'2" x 23'5"
Calculated Area: 250 sq. ft
Included: No

Heated: No
Finished: No
Enclosed: Yes
Contiguous: Yes
Permitted: Yes
Wet space: No
Addition: No
Conversion: No

8 Floor 1 - W.I.C.

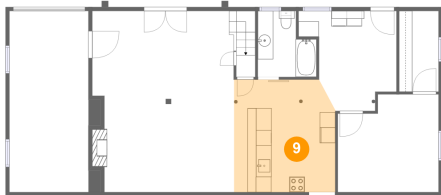


Max Dimensions: 5'1" x 10'6"
Calculated Area: 54 sq. ft
Included: Yes

Heated: Yes
Finished: Yes
Enclosed: Yes
Contiguous: Yes
Permitted: Yes
Wet space: No
Addition: No
Conversion: No

106 Mayfield Drive, Mayfield, Lynchburg, Lynchburg city,
Virginia, United States, 24502

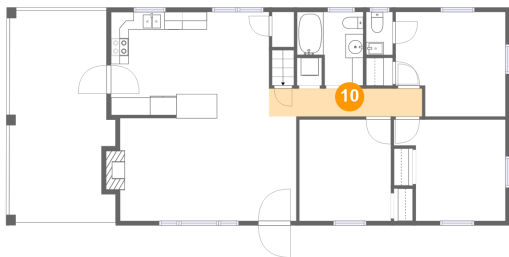
9 Floor 1 - Kitchen



Max Dimensions: 13'2" x 14'7"
Calculated Area: 187 sq. ft
Included: Yes

Heated: Yes
Finished: Yes
Enclosed: Yes
Contiguous: Yes
Permitted: Yes
Wet space: No
Addition: No
Conversion: No

10 Floor 2 - Hall



Max Dimensions: 17'2" x 3'1"
Calculated Area: 54 sq. ft
Included: Yes

Heated: Yes
Finished: Yes
Enclosed: Yes
Contiguous: Yes
Permitted: Yes
Wet space: No
Addition: No
Conversion: No

11 Floor 2 - Bedroom

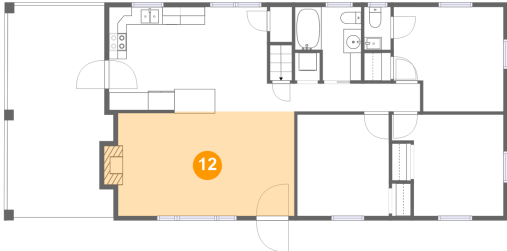


Max Dimensions: 10'4" x 11'5"
Calculated Area: 117 sq. ft
Included: Yes

Heated: Yes
Finished: Yes
Enclosed: Yes
Contiguous: Yes
Permitted: Yes
Wet space: No
Addition: No
Conversion: No

106 Mayfield Drive, Mayfield, Lynchburg, Lynchburg city,
Virginia, United States, 24502

12 Floor 2 - Living Room



Max Dimensions: 19'10" x 11'9"
Calculated Area: 238 sq. ft
Included: Yes

Heated: Yes
Finished: Yes
Enclosed: Yes
Contiguous: Yes
Permitted: Yes
Wet space: No
Addition: No
Conversion: No

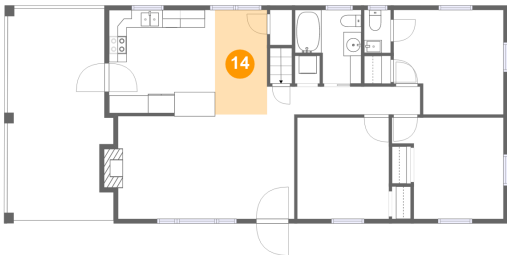
13 Floor 2 - Primary Bedroom



Max Dimensions: 12'4" x 11'9"
Calculated Area: 133 sq. ft
Included: Yes

Heated: Yes
Finished: Yes
Enclosed: Yes
Contiguous: Yes
Permitted: Yes
Wet space: No
Addition: No
Conversion: No

14 Floor 2 - Dining Area



Max Dimensions: 5'10" x 11'9"
Calculated Area: 69 sq. ft
Included: Yes

Heated: Yes
Finished: Yes
Enclosed: Yes
Contiguous: Yes
Permitted: Yes
Wet space: No
Addition: No
Conversion: No

106 Mayfield Drive, Mayfield, Lynchburg, Lynchburg city,
Virginia, United States, 24502

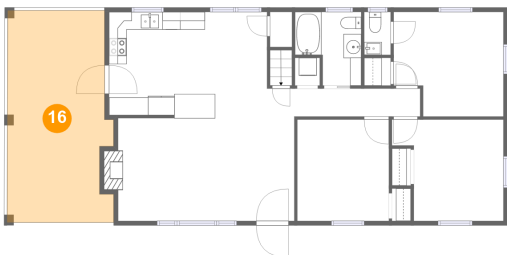
15 Floor 2 - Bedroom



Max Dimensions: 12'6" x 11'5"
Calculated Area: 122 sq. ft
Included: Yes

Heated: Yes
Finished: Yes
Enclosed: Yes
Contiguous: Yes
Permitted: Yes
Wet space: No
Addition: No
Conversion: No

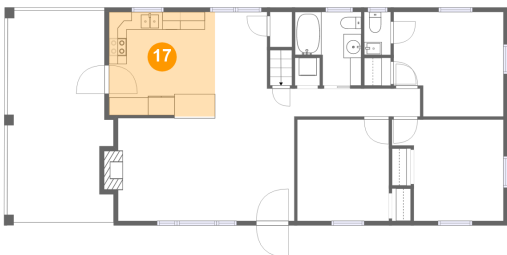
16 Floor 2 - Carport



Max Dimensions: 11'11" x 23'9"
Calculated Area: 263 sq. ft
Included: No

Heated: No
Finished: Yes
Enclosed: No
Contiguous: No
Permitted: Yes
Wet space: No
Addition: No
Conversion: No

17 Floor 2 - Kitchen



Max Dimensions: 11'11" x 11'9"
Calculated Area: 139 sq. ft
Included: Yes

Heated: Yes
Finished: Yes
Enclosed: Yes
Contiguous: Yes
Permitted: Yes
Wet space: No
Addition: No
Conversion: No

106 Mayfield Drive, Mayfield, Lynchburg, Lynchburg city,
Virginia, United States, 24502

18 Floor 2 - WC



Max Dimensions: 3'0" x 4'10"
Calculated Area: 14 sq. ft
Included: Yes

Heated: Yes
Finished: Yes
Enclosed: Yes
Contiguous: Yes
Permitted: Yes
Wet space: Yes
Addition: No
Conversion: No

19 Floor 2 - Bath



Max Dimensions: 7'5" x 8'3"
Calculated Area: 51 sq. ft
Included: Yes

Heated: Yes
Finished: Yes
Enclosed: Yes
Contiguous: Yes
Permitted: Yes
Wet space: Yes
Addition: No
Conversion: No