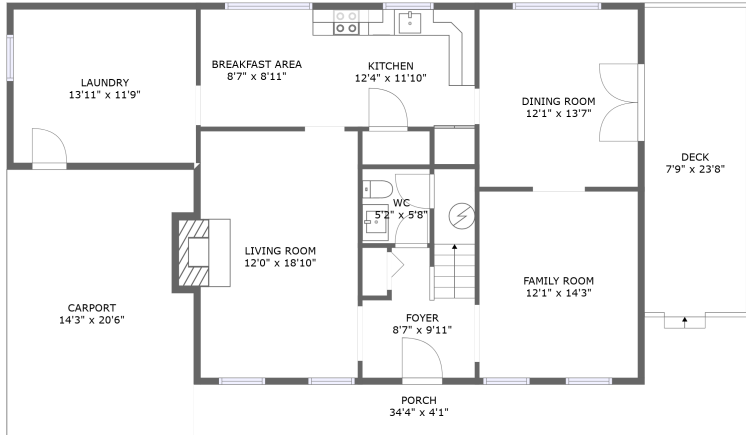
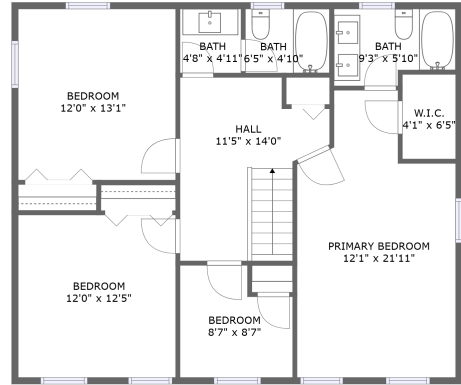


17 Knollwood Drive, Knollwood, Laymantown, Troutville, Botetourt County, Virginia, United



FLOOR 1




FLOOR 2

Property Summary

 **0** garages

 **4** bedrooms

 **2** bathrooms

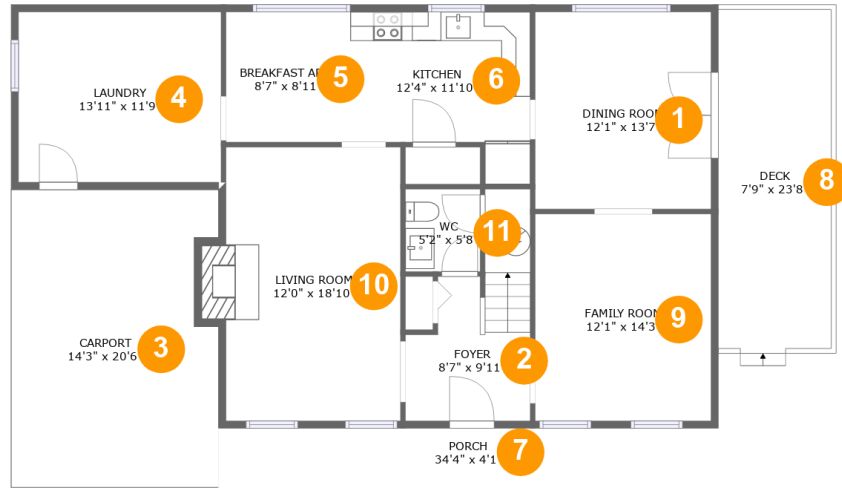
 **1** half baths

 **2** floors

 **2,183** Gross Living Area sqft

 **2,809** total sqft

17 Knollwood Drive, Knollwood, Laymantown, Troutville, Botetourt County, Virginia, United



Room Dimensions

Floor 1

Total sqft: 1808

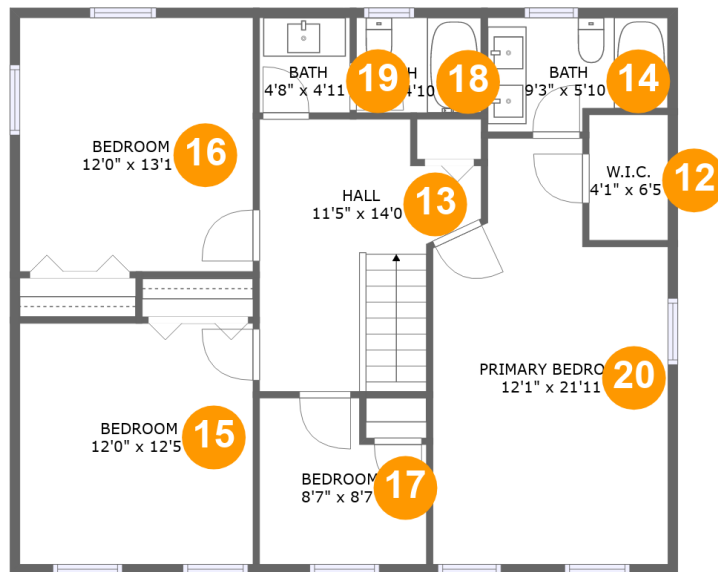
Living area: 1182

#	Room name	Dimensions	Area (sqft)	Counted as Living Area
1	Dining Room	12'1" x 13'7"	164 sq. ft	Yes
2	Foyer	8'7" x 9'11"	95 sq. ft	Yes
3	Carport	14'3" x 20'6"	282 sq. ft	No
4	Laundry	13'11" x 11'9"	163 sq. ft	Yes
5	Breakfast Area	8'7" x 8'11"	77 sq. ft	Yes
6	Kitchen	12'4" x 11'10"	120 sq. ft	Yes
7	Porch	34'4" x 4'1"	140 sq. ft	No
8	Deck	7'9" x 23'8"	194 sq. ft	No
9	Family Room	12'1" x 14'3"	172 sq. ft	Yes
10	Living Room	12'0" x 18'10"	235 sq. ft	Yes
11	Wc	5'2" x 5'8"	29 sq. ft	Yes

Scan captured on Tue, 01 Oct 2024 20:12:04 GMT

Information is calculated by CubiCasa technology; deemed highly reliable but not guaranteed.

17 Knollwood Drive, Knollwood, Laymantown, Troutville, Botetourt County, Virginia, United



Room Dimensions

Floor 2

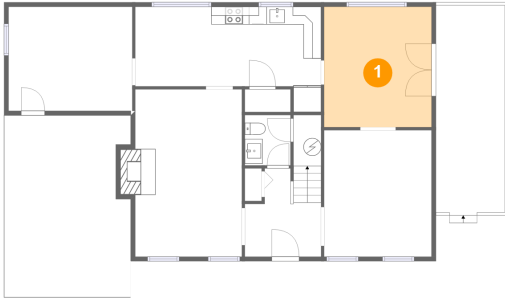
Total sqft: 1001

Living area: 1001

#	Room name	Dimensions	Area (sqft)	Counted as Living Area
12	W.i.c.	4'1" x 6'5"	26 sq. ft	Yes
13	Hall	11'5" x 14'0"	128 sq. ft	Yes
14	Bath	9'3" x 5'10"	49 sq. ft	Yes
15	Bedroom	12'0" x 12'5"	149 sq. ft	Yes
16	Bedroom	12'0" x 13'1"	157 sq. ft	Yes
17	Bedroom	8'7" x 8'7"	65 sq. ft	Yes
18	Bath	6'5" x 4'10"	31 sq. ft	Yes
19	Bath	4'8" x 4'11"	23 sq. ft	Yes
20	Primary Bedroom	12'1" x 21'11"	226 sq. ft	Yes

17 Knollwood Drive, Knollwood, Laymantown, Troutville, Botetourt County, Virginia, United

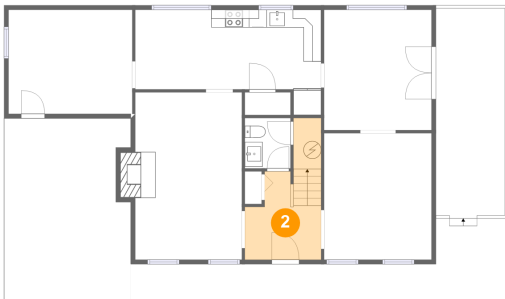
1 Floor 1 - Dining Room



Dimensions: 12'1" x 13'7"
Area: 164 sq. ft
Counted as Living Area:
Yes

Heated: Yes
Finished: Yes
Enclosed: Yes
Contiguous:
Yes
Permitted: Yes
Wet Space: No
Addition: No
Conversion: No

2 Floor 1 - Foyer

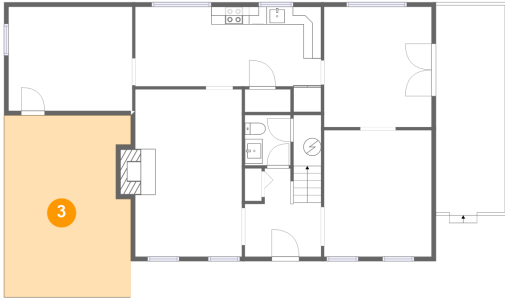


Dimensions: 8'7" x 9'11"
Area: 95 sq. ft
Counted as Living Area:
Yes

Heated: Yes
Finished: Yes
Enclosed: Yes
Contiguous:
Yes
Permitted: Yes
Wet Space: No
Addition: No
Conversion: No

17 Knollwood Drive, Knollwood, Laymantown, Troutville, Botetourt County, Virginia, United

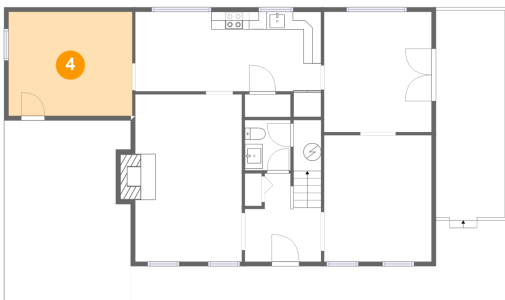
3 Floor 1 - Carport



Dimensions: 14'3" x 20'6"
Area: 282 sq. ft
Counted as Living Area: No

Heated: No
Finished: Yes
Enclosed: No
Contiguous: Yes
Permitted: Yes
Wet Space: No
Addition: No
Conversion: No

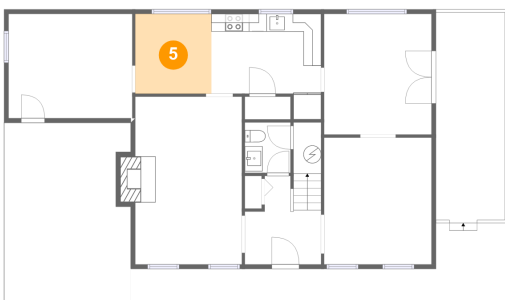
4 Floor 1 - Laundry



Dimensions: 13'11" x 11'9"
Area: 163 sq. ft
Counted as Living Area:
Yes

Heated: Yes
Finished: Yes
Enclosed: Yes
Contiguous:
Yes
Permitted: Yes
Wet Space: No
Addition: No
Conversion: No

5 Floor 1 - Breakfast Area

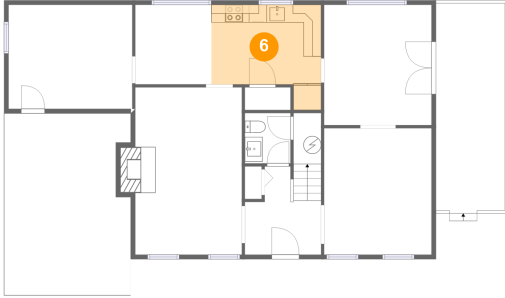


Dimensions: 8'7" x 8'11"
Area: 77 sq. ft
Counted as Living Area:
Yes

Heated: Yes
Finished: Yes
Enclosed: Yes
Contiguous:
Yes
Permitted: Yes
Wet Space: No
Addition: No
Conversion: No

17 Knollwood Drive, Knollwood, Laymantown, Troutville, Botetourt County, Virginia, United

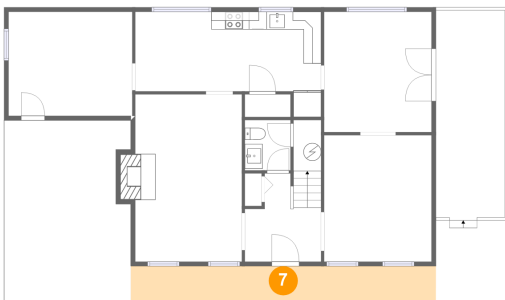
6 Floor 1 - Kitchen



Dimensions: 12'4" x 11'10"
Area: 120 sq. ft
Counted as Living Area:
Yes

Heated: Yes
Finished: Yes
Enclosed: Yes
Contiguous:
Yes
Permitted: Yes
Wet Space: No
Addition: No
Conversion: No

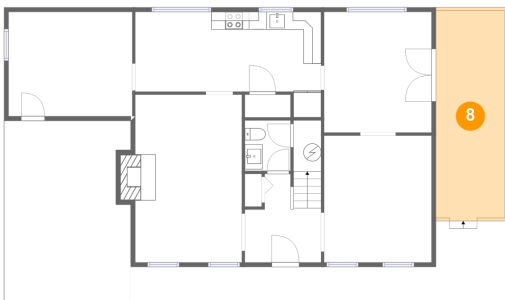
7 Floor 1 - Porch



Dimensions: 34'4" x 4'1"
Area: 140 sq. ft
Counted as Living Area: No

Heated: No
Finished: Yes
Enclosed: No
Contiguous: Yes
Permitted: Yes
Wet Space: No
Addition: No
Conversion: No

8 Floor 1 - Deck

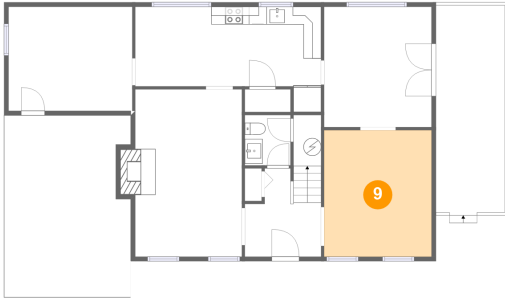


Dimensions: 7'9" x 23'8"
Area: 194 sq. ft
Counted as Living Area: No

Heated: No
Finished: Yes
Enclosed: No
Contiguous: Yes
Permitted: Yes
Wet Space: No
Addition: No
Conversion: No

17 Knollwood Drive, Knollwood, Laymantown, Troutville, Botetourt County, Virginia, United

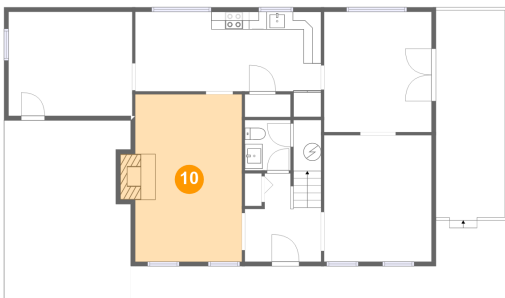
9 Floor 1 - Family Room



Dimensions: 12'1" x 14'3"
Area: 172 sq. ft
Counted as Living Area:
Yes

Heated: Yes
Finished: Yes
Enclosed: Yes
Contiguous:
Yes
Permitted: Yes
Wet Space: No
Addition: No
Conversion: No

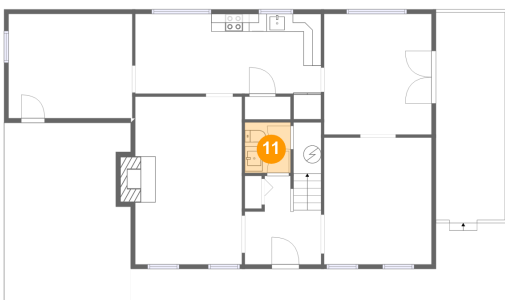
10 Floor 1 - Living Room



Dimensions: 12'0" x 18'10"
Area: 235 sq. ft
Counted as Living Area:
Yes

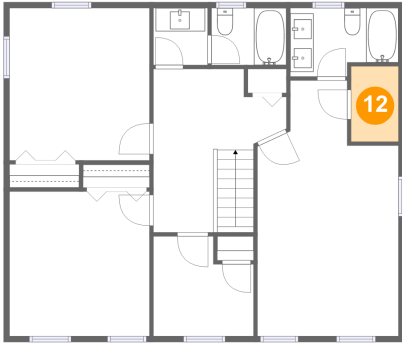
Heated: Yes
Finished: Yes
Enclosed: Yes
Contiguous:
Yes
Permitted: Yes
Wet Space: No
Addition: No
Conversion: No

11 Floor 1 - Wc



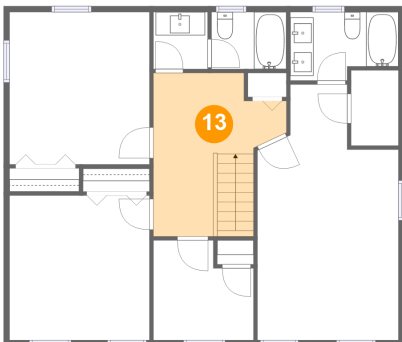
Dimensions: 5'2" x 5'8"
Area: 29 sq. ft
Counted as Living Area:
Yes

Heated: Yes
Finished: Yes
Enclosed: Yes
Contiguous:
Yes
Permitted: Yes
Wet Space: Yes
Addition: No
Conversion: No

**17 Knollwood Drive, Knollwood, Laymantown,
Troutville, Botetourt County, Virginia, United****12 Floor 2 - W.i.c.**

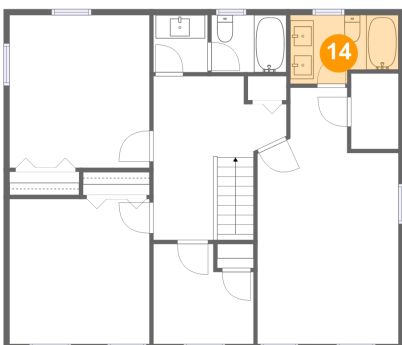
Dimensions: 4'1" x 6'5"
Area: 26 sq. ft
Counted as Living Area:
Yes

Heated: Yes
Finished: Yes
Enclosed: Yes
Contiguous:
Yes
Permitted: Yes
Wet Space: No
Addition: No
Conversion: No

13 Floor 2 - Hall

Dimensions: 11'5" x 14'0"
Area: 128 sq. ft
Counted as Living Area:
Yes

Heated: Yes
Finished: Yes
Enclosed: Yes
Contiguous:
Yes
Permitted: Yes
Wet Space: No
Addition: No
Conversion: No

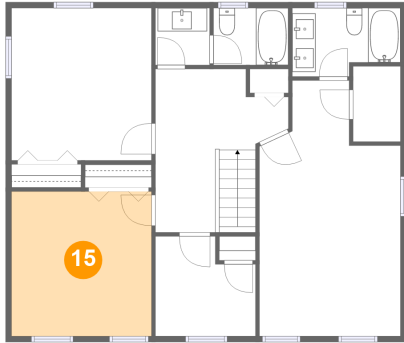
14 Floor 2 - Bath

Dimensions: 9'3" x 5'10"
Area: 49 sq. ft
Counted as Living Area:
Yes

Heated: Yes
Finished: Yes
Enclosed: Yes
Contiguous:
Yes
Permitted: Yes
Wet Space: Yes
Addition: No
Conversion: No

17 Knollwood Drive, Knollwood, Laymantown, Troutville, Botetourt County, Virginia, United

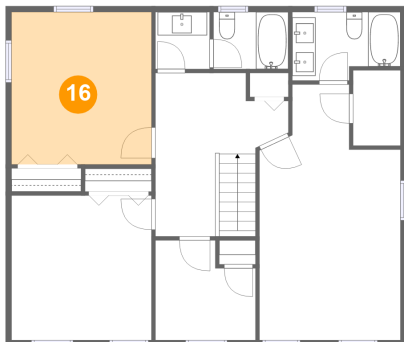
15 Floor 2 - Bedroom



Dimensions: 12'0" x 12'5"
Area: 149 sq. ft
Counted as Living Area:
Yes

Heated: Yes
Finished: Yes
Enclosed: Yes
Contiguous:
Yes
Permitted: Yes
Wet Space: No
Addition: No
Conversion: No

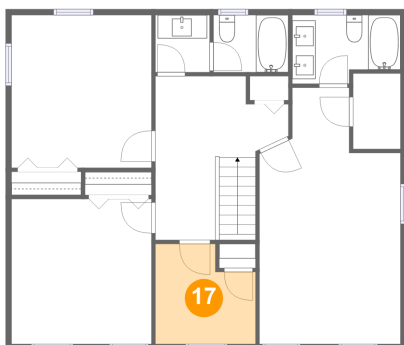
16 Floor 2 - Bedroom



Dimensions: 12'0" x 13'1"
Area: 157 sq. ft
Counted as Living Area:
Yes

Heated: Yes
Finished: Yes
Enclosed: Yes
Contiguous:
Yes
Permitted: Yes
Wet Space: No
Addition: No
Conversion: No

17 Floor 2 - Bedroom

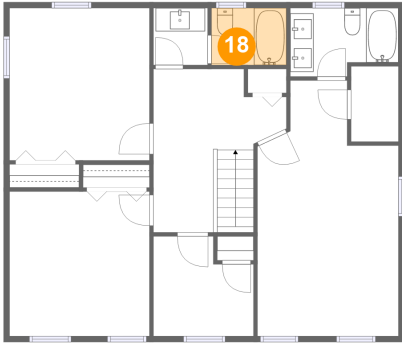


Dimensions: 8'7" x 8'7"
Area: 65 sq. ft
Counted as Living Area:
Yes

Heated: Yes
Finished: Yes
Enclosed: Yes
Contiguous:
Yes
Permitted: Yes
Wet Space: No
Addition: No
Conversion: No

17 Knollwood Drive, Knollwood, Laymantown, Troutville, Botetourt County, Virginia, United

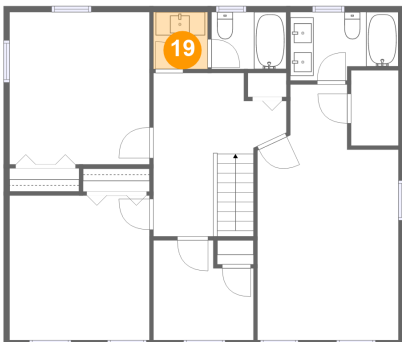
18 Floor 2 - Bath



Dimensions: 6'5" x 4'10"
Area: 31 sq. ft
Counted as Living Area:
Yes

Heated: Yes
Finished: Yes
Enclosed: Yes
Contiguous:
Yes
Permitted: Yes
Wet Space: Yes
Addition: No
Conversion: No

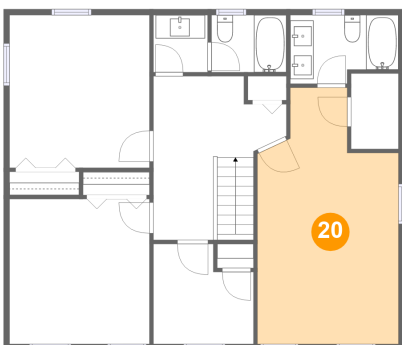
19 Floor 2 - Bath



Dimensions: 4'8" x 4'11"
Area: 23 sq. ft
Counted as Living Area:
Yes

Heated: Yes
Finished: Yes
Enclosed: Yes
Contiguous:
Yes
Permitted: Yes
Wet Space: Yes
Addition: No
Conversion: No

20 Floor 2 - Primary Bedroom



Dimensions: 12'1" x 21'11"
Area: 226 sq. ft
Counted as Living Area:
Yes

Heated: Yes
Finished: Yes
Enclosed: Yes
Contiguous:
Yes
Permitted: Yes
Wet Space: No
Addition: No
Conversion: No