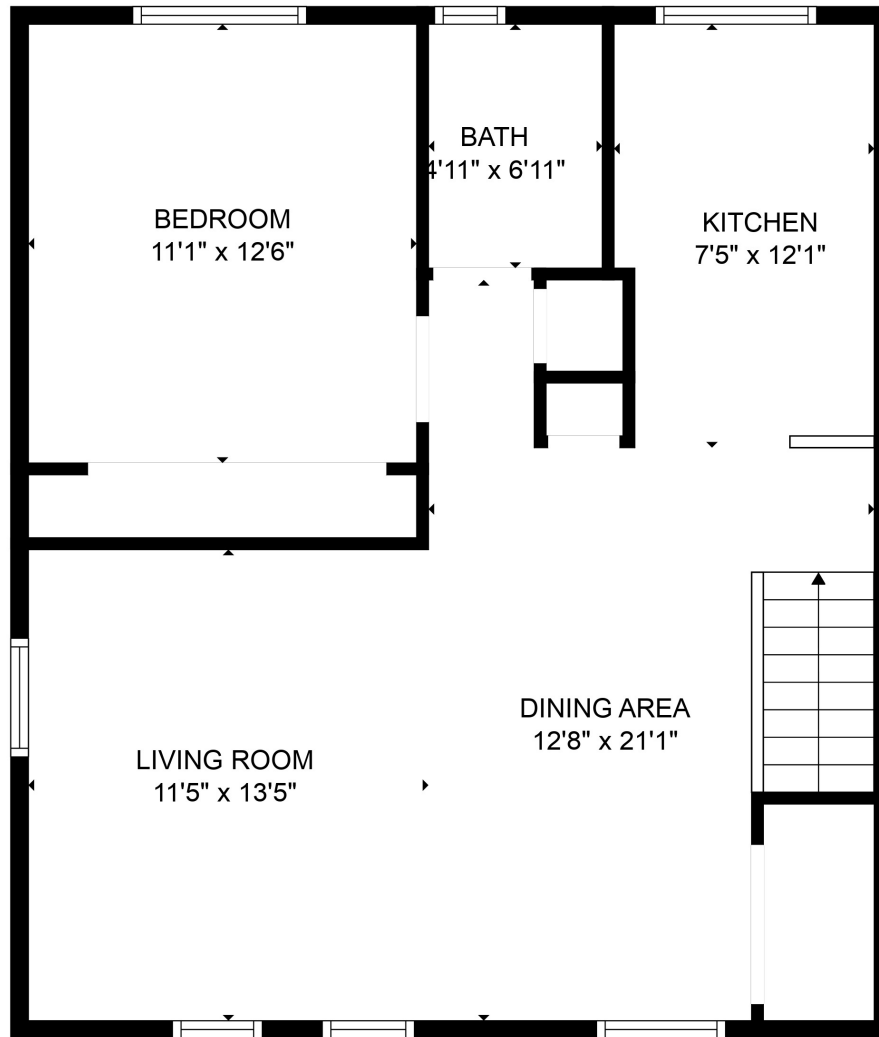


FLOOR 1



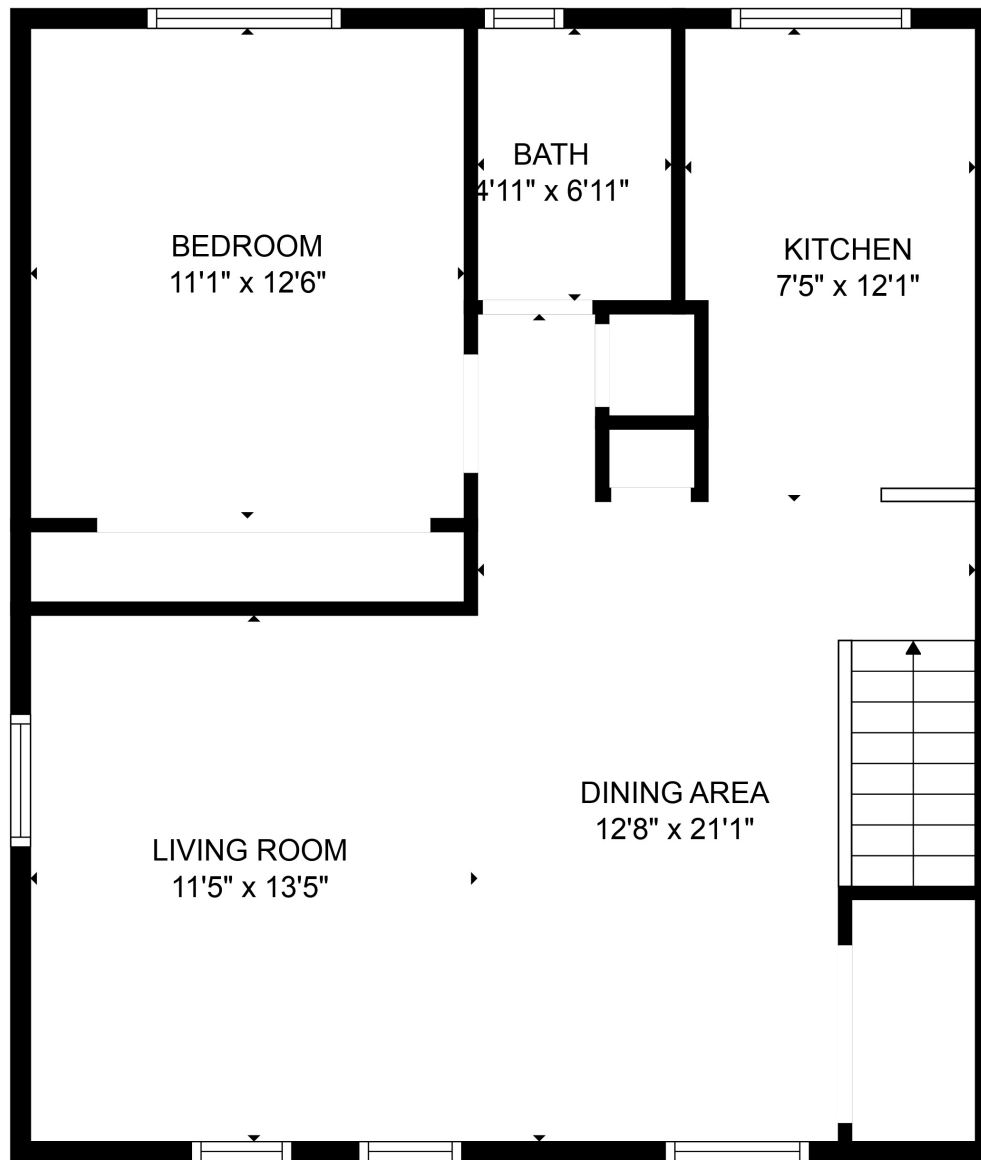
FLOOR 2

TOTAL: 743 sq. ft

Below Ground: 60 sq. ft, FLOOR 2: 683 sq. ft

Floor plans are intended to give a general indication of the property layout. Sizes and dimensions are estimate, Actual may vary.

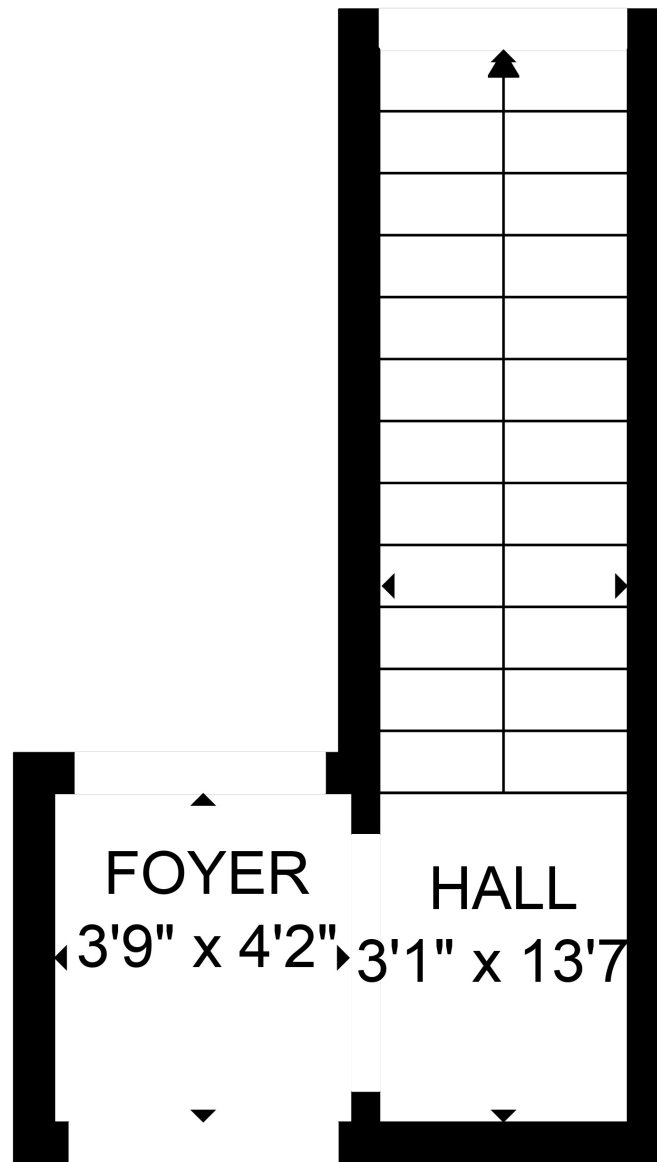




TOTAL: 743 sq. ft
Below Ground: 60 sq. ft, FLOOR 2: 683 sq. ft

Floor plans are intended to give a general indication of the property layout. Sizes and dimensions are estimate, Actual may vary.





TOTAL: 743 sq. ft
Below Ground: 60 sq. ft, FLOOR 2: 683 sq. ft

Floor plans are intended to give a general indication of the property layout. Sizes and dimensions are estimate, Actual may vary.

