

116-99 Begin St

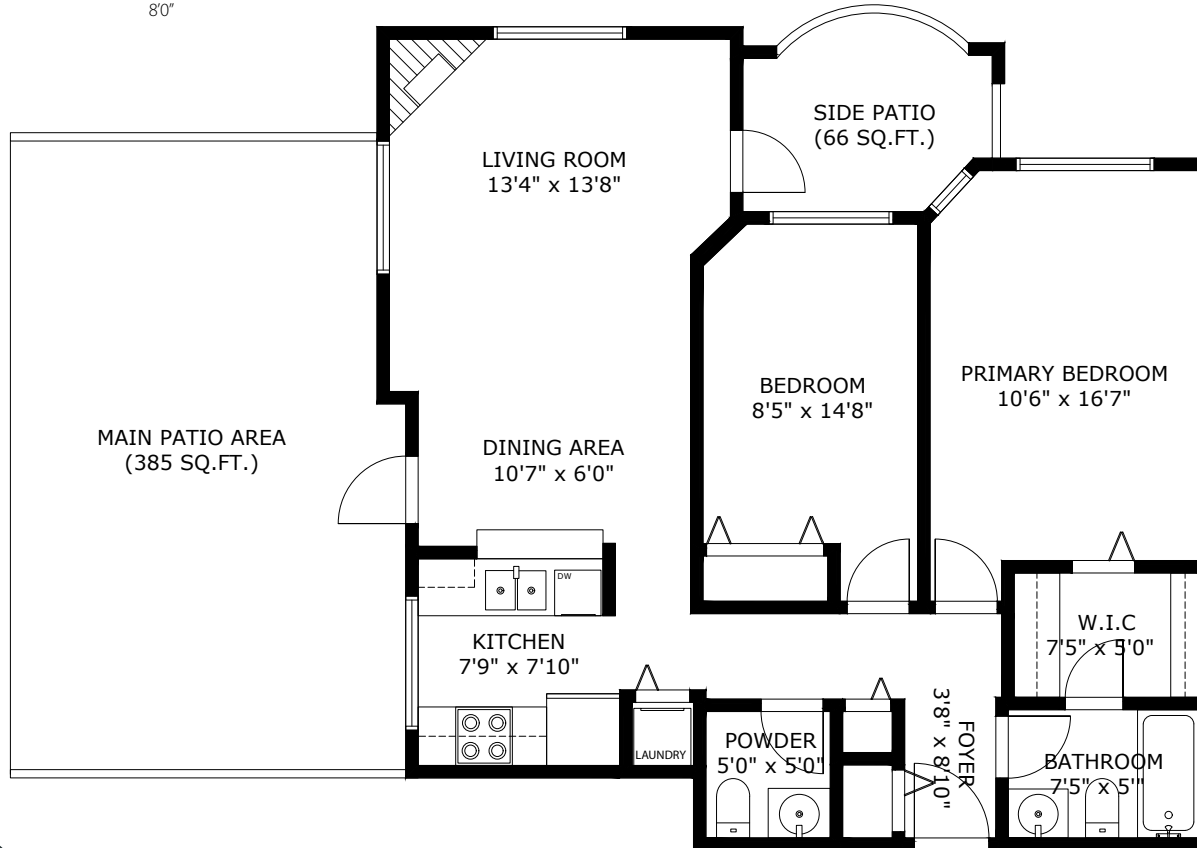
Coquitlam BC V3K 6R5

Total Area: 882 SQ.FT.
Side Patio Area: 66 SQ.FT.
Main Patio Area: 385 SQ.FT.
Ceiling Height: 8'0"

2
BEDROOMS

2
BATHROOMS

882
TOTAL SQ.FT.



ERIK SJOGREN
Personal Real Estate Corporation

PHONE: 778-554-3554
EMAIL: erik.sjogren@kw.com



3D IMMERSIVE
Tours Photos Floor Plans

Professionally measured by: 3D Immersive Marketing Ltd.

Lead Floor Planner: *Sara Alexander*
Quality Assurance: *Jamie Graham*