

Home report

5459 North Lake Drive, North Lakes, Roanoke, Roanoke County,  
Virginia, United States, 24019



**Total Area: 1836 sq. ft**  
Below Ground: 734 sq. ft, Floor 2: 1102 sq. ft  
Excluded: Garage 270 sq. ft, Utility 245 sq. ft, Patio 197 sq. ft, Fireplace 10 sq. ft, Porch 41 sq. ft, Walls: 156 sq. ft

Property summary

 **2** Floors

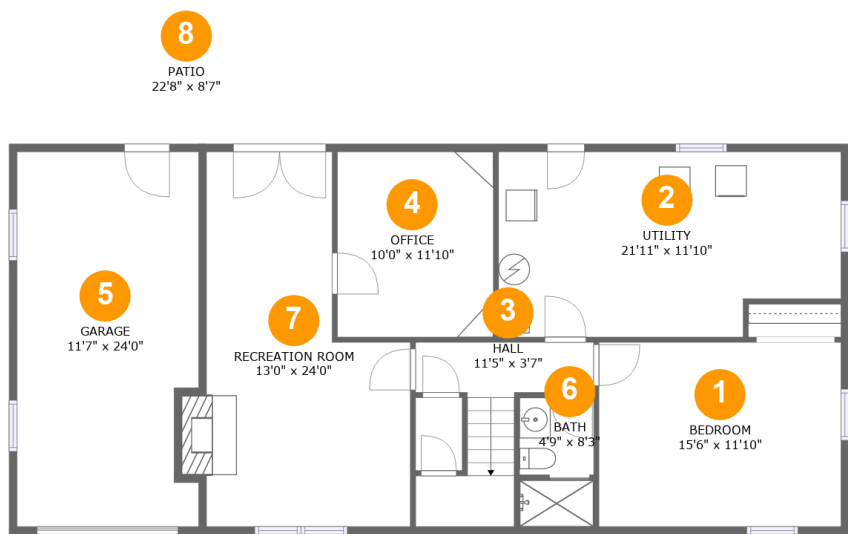
 **4** Bedrooms

 **2** Bathrooms

 **1** Garages

Home report

5459 North Lake Drive, North Lakes, Roanoke, Roanoke County,  
Virginia, United States, 24019



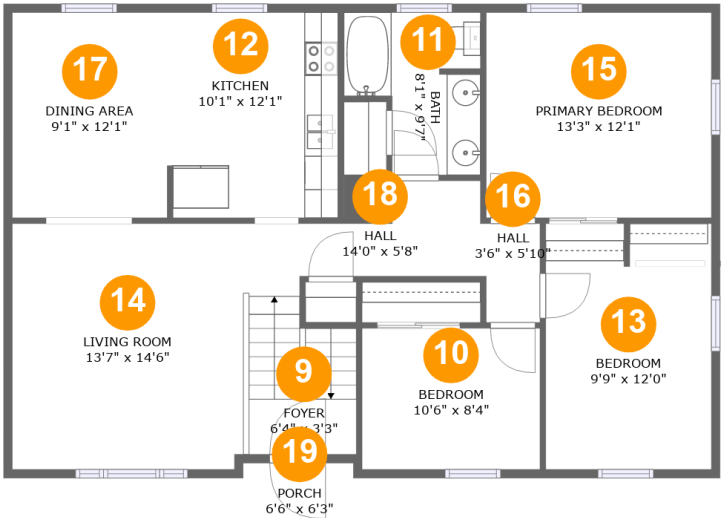
Room dimensions

Floor 1 Below ground Total:734sqft    Excluded: 722sqft

#		Max Dimensions	sqft	Included
1	Bedroom	15'6" x 11'10"	183 sq. ft	Yes
2	Utility	21'11" x 11'10"	245 sq. ft	No
3	Hall	11'5" x 3'7"	73 sq. ft	Yes
4	Office	10'0" x 11'10"	119 sq. ft	Yes
5	Garage	11'7" x 24'0"	270 sq. ft	No
6	Bath	4'9" x 8'3"	39 sq. ft	Yes
7	Recreation Room	13'0" x 24'0"	261 sq. ft	Yes
8	Patio	22'8" x 8'7"	197 sq. ft	No

Home report

5459 North Lake Drive, North Lakes, Roanoke, Roanoke County,  
Virginia, United States, 24019



Room dimensions

Floor 2 Total:1102sqft    Excluded: 41sqft

#		Max Dimensions	sqft	Included
9	Foyer	6'4" x 3'3"	56 sq. ft	Yes
10	Bedroom	10'6" x 8'4"	87 sq. ft	Yes
11	Bath	8'1" x 9'7"	63 sq. ft	Yes
12	Kitchen	10'1" x 12'1"	121 sq. ft	Yes
13	Bedroom	9'9" x 12'0"	117 sq. ft	Yes
14	Living Room	13'7" x 14'6"	197 sq. ft	Yes
15	Primary Bedroom	13'3" x 12'1"	161 sq. ft	Yes
16	Hall	3'6" x 5'10"	20 sq. ft	Yes
17	Dining Area	9'1" x 12'1"	111 sq. ft	Yes
18	Hall	14'0" x 5'8"	61 sq. ft	Yes
19	Porch	6'6" x 6'3"	41 sq. ft	No

5459 North Lake Drive, North Lakes, Roanoke, Roanoke County,  
Virginia, United States, 24019

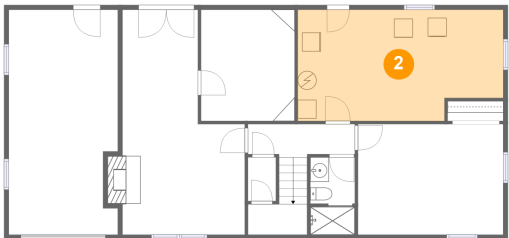
1 Floor 1 - Bedroom



Max Dimensions: 15'6" x 11'10"  
Calculated Area: 183 sq. ft  
Included: Yes

Heated: Yes  
Finished: Yes  
Enclosed: Yes  
Contiguous: Yes  
Permitted: Yes  
Wet space: No  
Addition: No  
Conversion: No

2 Floor 1 - Utility

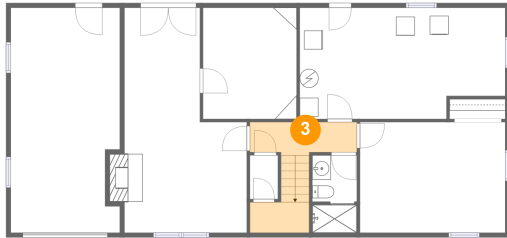


Max Dimensions: 21'11" x 11'10"  
Calculated Area: 245 sq. ft  
Included: No

Heated: Yes  
Finished: No  
Enclosed: Yes  
Contiguous: Yes  
Permitted: Yes  
Wet space: No  
Addition: No  
Conversion: No

5459 North Lake Drive, North Lakes, Roanoke, Roanoke County,  
Virginia, United States, 24019

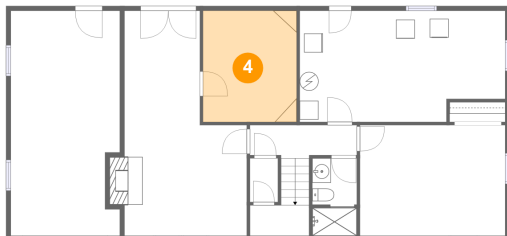
### 3 Floor 1 - Hall



Max Dimensions: 11'5" x 3'7"  
Calculated Area: 73 sq. ft  
Included: Yes

Heated: Yes  
Finished: Yes  
Enclosed: Yes  
Contiguous: Yes  
Permitted: Yes  
Wet space: No  
Addition: No  
Conversion: No

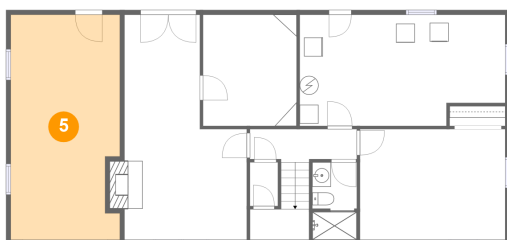
### 4 Floor 1 - Office



Max Dimensions: 10'0" x 11'10"  
Calculated Area: 119 sq. ft  
Included: Yes

Heated: Yes  
Finished: Yes  
Enclosed: Yes  
Contiguous: Yes  
Permitted: Yes  
Wet space: No  
Addition: No  
Conversion: No

### 5 Floor 1 - Garage



Max Dimensions: 11'7" x 24'0"  
Calculated Area: 270 sq. ft  
Included: No

Heated: No  
Finished: No  
Enclosed: Yes  
Contiguous: Yes  
Permitted: Yes  
Wet space: No  
Addition: No  
Conversion: No

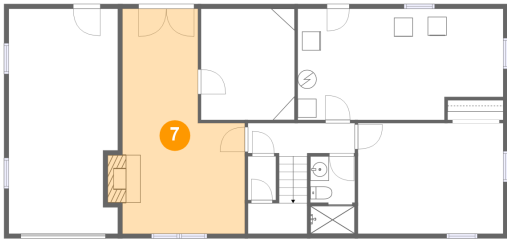
6 Floor 1 - Bath



Max Dimensions: 4'9" x 8'3"  
Calculated Area: 39 sq. ft  
Included: Yes

Heated: Yes  
Finished: Yes  
Enclosed: Yes  
Contiguous: Yes  
Permitted: Yes  
Wet space: Yes  
Addition: No  
Conversion: No

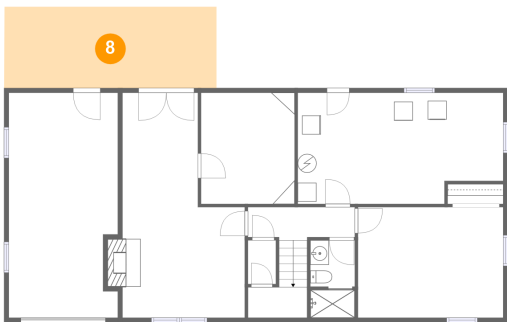
7 Floor 1 - Recreation Room



Max Dimensions: 13'0" x 24'0"  
Calculated Area: 261 sq. ft  
Included: Yes

Heated: Yes  
Finished: Yes  
Enclosed: Yes  
Contiguous: Yes  
Permitted: Yes  
Wet space: No  
Addition: No  
Conversion: No

8 Floor 1 - Patio

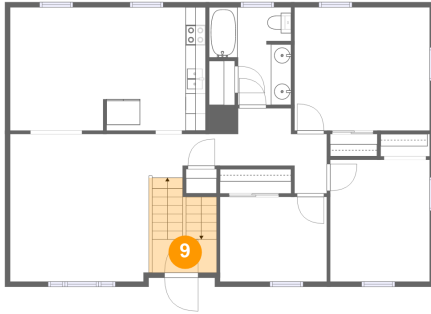


Max Dimensions: 22'8" x 8'7"  
Calculated Area: 197 sq. ft  
Included: No

Heated: No  
Finished: Yes  
Enclosed: No  
Contiguous: Yes  
Permitted: Yes  
Wet space: No  
Addition: No  
Conversion: No

5459 North Lake Drive, North Lakes, Roanoke, Roanoke County,  
Virginia, United States, 24019

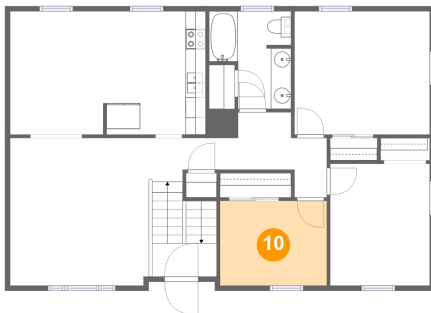
## 9 Floor 2 - Foyer



Max Dimensions: 6'4" x 3'3"  
Calculated Area: 56 sq. ft  
Included: Yes

Heated: Yes  
Finished: Yes  
Enclosed: Yes  
Contiguous: Yes  
Permitted: Yes  
Wet space: No  
Addition: No  
Conversion: No

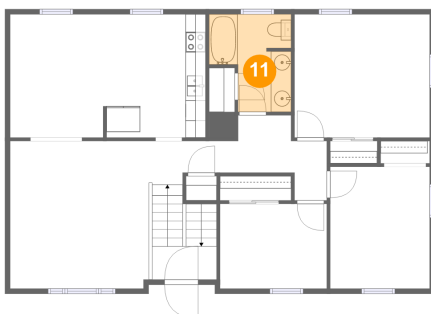
## 10 Floor 2 - Bedroom



Max Dimensions: 10'6" x 8'4"  
Calculated Area: 87 sq. ft  
Included: Yes

Heated: Yes  
Finished: Yes  
Enclosed: Yes  
Contiguous: Yes  
Permitted: Yes  
Wet space: No  
Addition: No  
Conversion: No

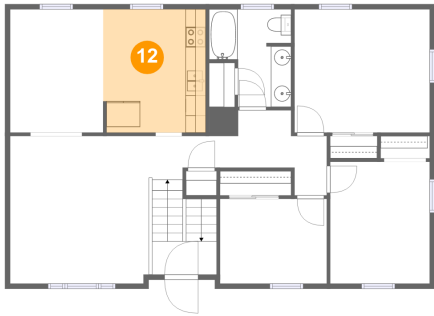
## 11 Floor 2 - Bath



Max Dimensions: 8'1" x 9'7"  
Calculated Area: 63 sq. ft  
Included: Yes

Heated: Yes  
Finished: Yes  
Enclosed: Yes  
Contiguous: Yes  
Permitted: Yes  
Wet space: Yes  
Addition: No  
Conversion: No

12 Floor 2 - Kitchen



Max Dimensions: 10'1" x 12'1"  
Calculated Area: 121 sq. ft  
Included: Yes

Heated: Yes  
Finished: Yes  
Enclosed: Yes  
Contiguous: Yes  
Permitted: Yes  
Wet space: No  
Addition: No  
Conversion: No

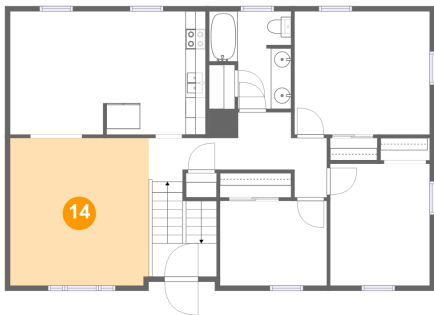
13 Floor 2 - Bedroom



Max Dimensions: 9'9" x 12'0"  
Calculated Area: 117 sq. ft  
Included: Yes

Heated: Yes  
Finished: Yes  
Enclosed: Yes  
Contiguous: Yes  
Permitted: Yes  
Wet space: No  
Addition: No  
Conversion: No

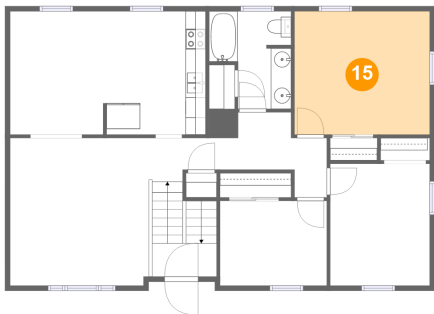
14 Floor 2 - Living Room



Max Dimensions: 13'7" x 14'6"  
Calculated Area: 197 sq. ft  
Included: Yes

Heated: Yes  
Finished: Yes  
Enclosed: Yes  
Contiguous: Yes  
Permitted: Yes  
Wet space: No  
Addition: No  
Conversion: No

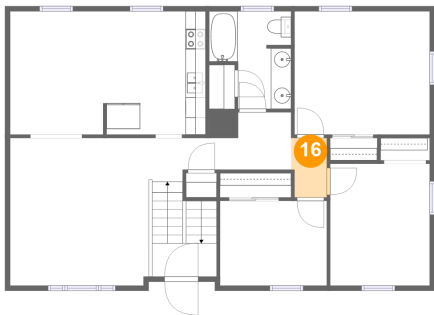
15 Floor 2 - Primary Bedroom



Max Dimensions: 13'3" x 12'1"  
Calculated Area: 161 sq. ft  
Included: Yes

Heated: Yes  
Finished: Yes  
Enclosed: Yes  
Contiguous: Yes  
Permitted: Yes  
Wet space: No  
Addition: No  
Conversion: No

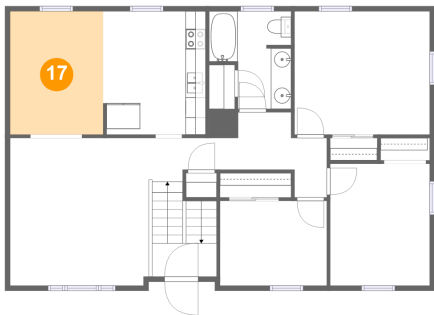
16 Floor 2 - Hall



Max Dimensions: 3'6" x 5'10"  
Calculated Area: 20 sq. ft  
Included: Yes

Heated: Yes  
Finished: Yes  
Enclosed: Yes  
Contiguous: Yes  
Permitted: Yes  
Wet space: No  
Addition: No  
Conversion: No

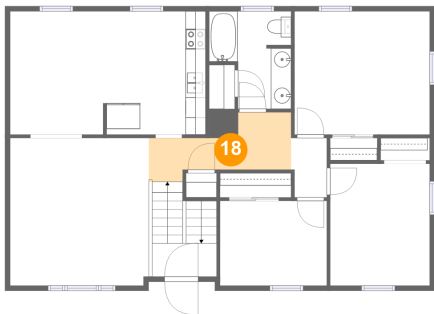
17 Floor 2 - Dining Area



Max Dimensions: 9'1" x 12'1"  
Calculated Area: 111 sq. ft  
Included: Yes

Heated: Yes  
Finished: Yes  
Enclosed: Yes  
Contiguous: Yes  
Permitted: Yes  
Wet space: No  
Addition: No  
Conversion: No

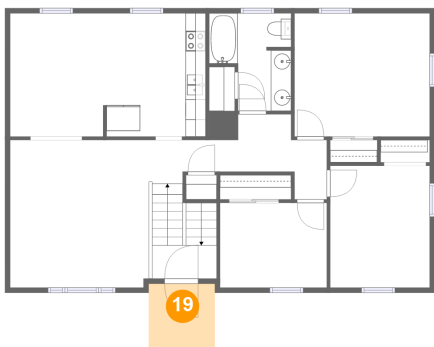
18 Floor 2 - Hall



Max Dimensions: 14'0" x 5'8"  
Calculated Area: 61 sq. ft  
Included: Yes

Heated: Yes  
Finished: Yes  
Enclosed: Yes  
Contiguous: Yes  
Permitted: Yes  
Wet space: No  
Addition: No  
Conversion: No

19 Floor 2 - Porch



Max Dimensions: 6'6" x 6'3"  
Calculated Area: 41 sq. ft  
Included: No

Heated: No  
Finished: Yes  
Enclosed: No  
Contiguous: Yes  
Permitted: Yes  
Wet space: No  
Addition: No  
Conversion: No