

# 2102 Bridle Lane, Sugar Loaf Estates, Cave Spring, Roanoke, Roanoke County, Virginia,



## Property Summary

 **0** garages

 **3** bedrooms

 **2** bathrooms

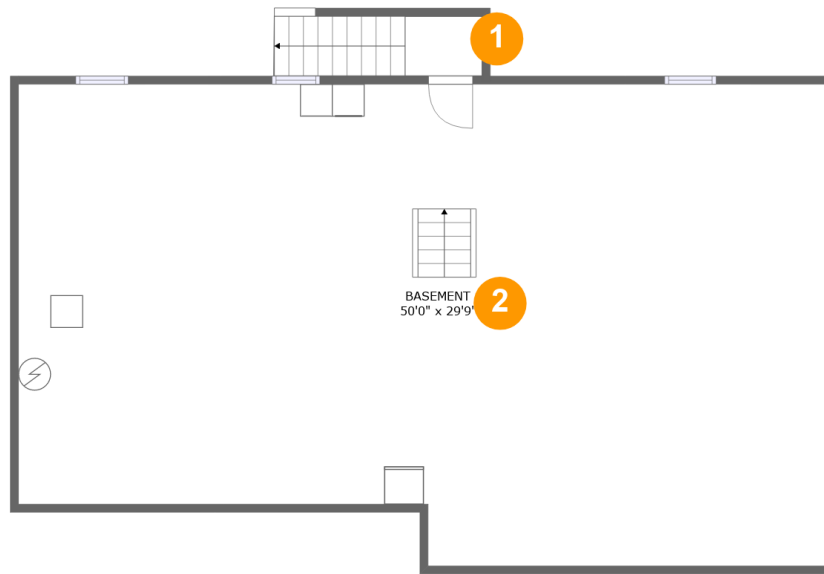
 **0** half baths

 **2** floors

 **1,850** Gross Living Area sqft

 **4,126** total sqft

**2102 Bridle Lane, Sugar Loaf Estates, Cave Spring, Roanoke, Roanoke County, Virginia,**



**Room Dimensions**

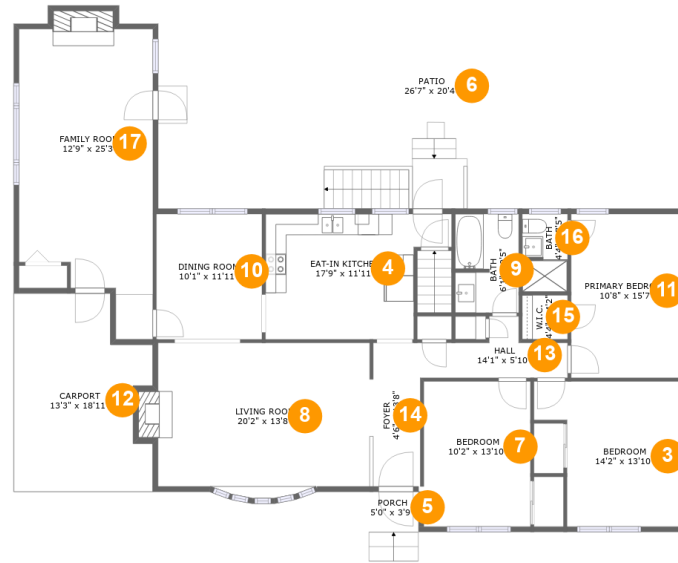
**Floor 1**

**Total sqft: 1473**

**Living area: 0**

#	Room name	Dimensions	Area (sqft)	Counted as Living Area
1	Outdoor	4'9" x 3'8"	47 sq. ft	No
2	Basement	50'0" x 29'9"	1393 sq. ft	No

# 2102 Bridle Lane, Sugar Loaf Estates, Cave Spring, Roanoke, Roanoke County, Virginia,



## Room Dimensions

Floor 2

Total sqft: 2653

Living area: 1850

#	Room name	Dimensions	Area (sqft)	Counted as Living Area
3	Bedroom	14'2" x 13'10"	164 sq. ft	Yes
4	Eat-in Kitchen	17'9" x 11'11"	180 sq. ft	Yes
5	Porch	5'0" x 3'9"	19 sq. ft	No
6	Patio	26'7" x 20'4"	542 sq. ft	No
7	Bedroom	10'2" x 13'10"	141 sq. ft	Yes
8	Living Room	20'2" x 13'8"	295 sq. ft	Yes
9	Bath	6'1" x 9'5"	56 sq. ft	Yes
10	Dining Room	10'1" x 11'11"	120 sq. ft	Yes
11	Primary Bedroom	10'8" x 15'7"	166 sq. ft	Yes
12	Carport	13'3" x 18'11"	220 sq. ft	No
13	Hall	14'1" x 5'10"	54 sq. ft	Yes

Scan captured on Wed, 19 Jun 2024 17:26:29 GMT

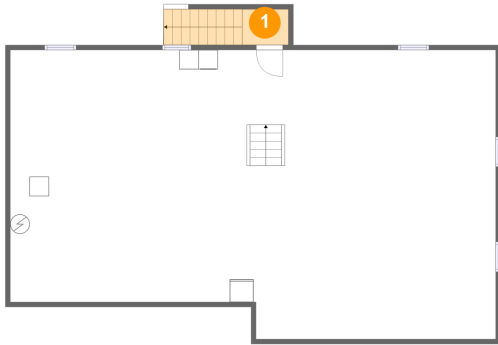
Information is calculated by CubiCasa technology; deemed highly reliable but not guaranteed.

**2102 Bridle Lane, Sugar Loaf Estates, Cave Spring, Roanoke, Roanoke County, Virginia,**

#	Room name	Dimensions	Area (sqft)	Counted as Living Area
14	Foyer	4'6" x 13'8"	61 sq. ft	Yes
15	W.i.c.	4'4" x 4'2"	18 sq. ft	Yes
16	Bath	4'4" x 7'5"	31 sq. ft	Yes
17	Family Room	12'9" x 25'3"	330 sq. ft	Yes

# 2102 Bridle Lane, Sugar Loaf Estates, Cave Spring, Roanoke, Roanoke County, Virginia,

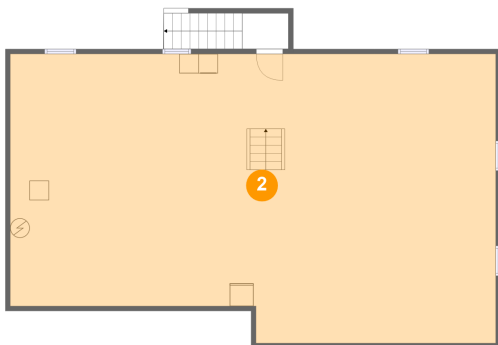
## 1 Floor 1 - Outdoor



Dimensions: 4'9" x 3'8"  
Area: 47 sq. ft  
Counted as Living Area: No

Heated: No  
Finished: No  
Enclosed: No  
Contiguous: Yes  
Permitted: No  
Wet Space: No  
Addition: No  
Conversion: No

## 2 Floor 1 - Basement



Dimensions: 50'0" x 29'9"  
Area: 1393 sq. ft  
Counted as Living Area: No

Heated: No  
Finished: No  
Enclosed: Yes  
Contiguous: Yes  
Permitted: Yes  
Wet Space: No  
Addition: No  
Conversion: No

# 2102 Bridle Lane, Sugar Loaf Estates, Cave Spring, Roanoke, Roanoke County, Virginia,

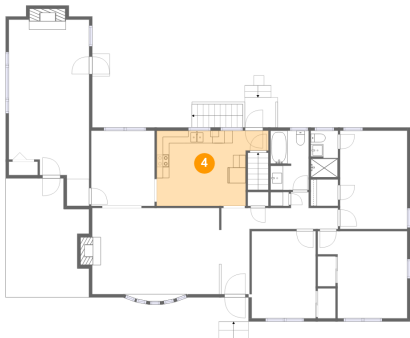
## 3 Floor 2 - Bedroom



Dimensions: 14'2" x 13'10"  
Area: 164 sq. ft  
Counted as Living Area:  
Yes

Heated: Yes  
Finished: Yes  
Enclosed: Yes  
Contiguous:  
Yes  
Permitted: Yes  
Wet Space: No  
Addition: No  
Conversion: No

## 4 Floor 2 - Eat-in Kitchen



Dimensions: 17'9" x 11'11"  
Area: 180 sq. ft  
Counted as Living Area:  
Yes

Heated: Yes  
Finished: Yes  
Enclosed: Yes  
Contiguous:  
Yes  
Permitted: Yes  
Wet Space: No  
Addition: No  
Conversion: No

## 5 Floor 2 - Porch

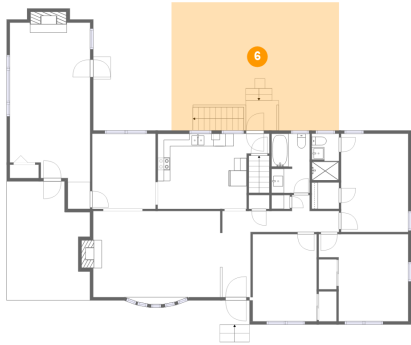


Dimensions: 5'0" x 3'9"  
Area: 19 sq. ft  
Counted as Living Area: No

Heated: No  
Finished: Yes  
Enclosed: No  
Contiguous: Yes  
Permitted: Yes  
Wet Space: No  
Addition: No  
Conversion: No

# 2102 Bridle Lane, Sugar Loaf Estates, Cave Spring, Roanoke, Roanoke County, Virginia,

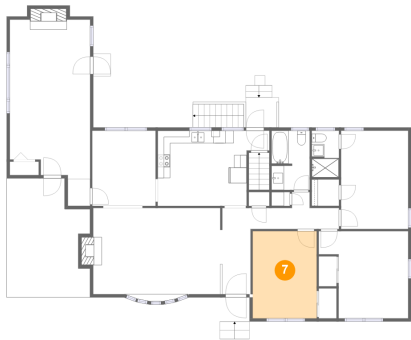
## 6 Floor 2 - Patio



Dimensions: 26'7" x 20'4"  
Area: 542 sq. ft  
Counted as Living Area: No

Heated: No  
Finished: Yes  
Enclosed: No  
Contiguous: Yes  
Permitted: Yes  
Wet Space: No  
Addition: No  
Conversion: No

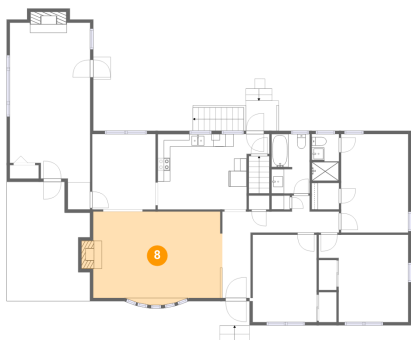
## 7 Floor 2 - Bedroom



Dimensions: 10'2" x 13'10"  
Area: 141 sq. ft  
Counted as Living Area: Yes

Heated: Yes  
Finished: Yes  
Enclosed: Yes  
Contiguous: Yes  
Permitted: Yes  
Wet Space: No  
Addition: No  
Conversion: No

## 8 Floor 2 - Living Room

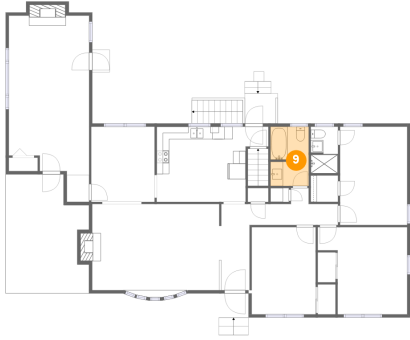


Dimensions: 20'2" x 13'8"  
Area: 295 sq. ft  
Counted as Living Area: Yes

Heated: Yes  
Finished: Yes  
Enclosed: Yes  
Contiguous: Yes  
Permitted: Yes  
Wet Space: No  
Addition: No  
Conversion: No

# 2102 Bridle Lane, Sugar Loaf Estates, Cave Spring, Roanoke, Roanoke County, Virginia,

## 9 Floor 2 - Bath



Dimensions: 6'1" x 9'5"  
Area: 56 sq. ft  
Counted as Living Area:  
Yes

Heated: Yes  
Finished: Yes  
Enclosed: Yes  
Contiguous:  
Yes  
Permitted: Yes  
Wet Space: Yes  
Addition: No  
Conversion: No

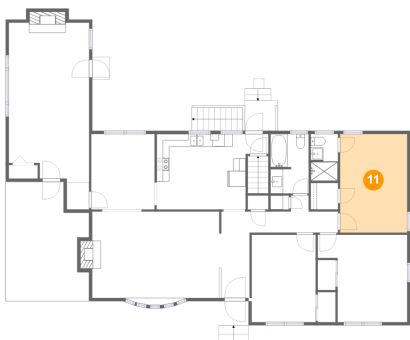
## 10 Floor 2 - Dining Room



Dimensions: 10'1" x 11'11"  
Area: 120 sq. ft  
Counted as Living Area:  
Yes

Heated: Yes  
Finished: Yes  
Enclosed: Yes  
Contiguous:  
Yes  
Permitted: Yes  
Wet Space: No  
Addition: No  
Conversion: No

## 11 Floor 2 - Primary Bedroom



Dimensions: 10'8" x 15'7"  
Area: 166 sq. ft  
Counted as Living Area:  
Yes

Heated: Yes  
Finished: Yes  
Enclosed: Yes  
Contiguous:  
Yes  
Permitted: Yes  
Wet Space: No  
Addition: No  
Conversion: No



# 2102 Bridle Lane, Sugar Loaf Estates, Cave Spring, Roanoke, Roanoke County, Virginia,

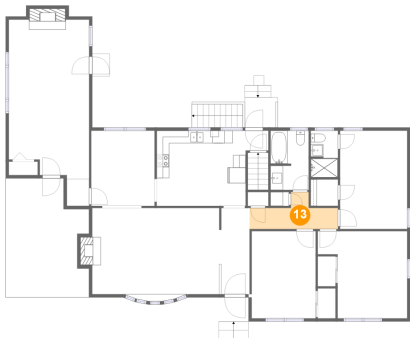
## 12 Floor 2 - Carport



Dimensions: 13'3" x 18'11"  
Area: 220 sq. ft  
Counted as Living Area: No

Heated: No  
Finished: Yes  
Enclosed: No  
Contiguous: Yes  
Permitted: Yes  
Wet Space: No  
Addition: No  
Conversion: No

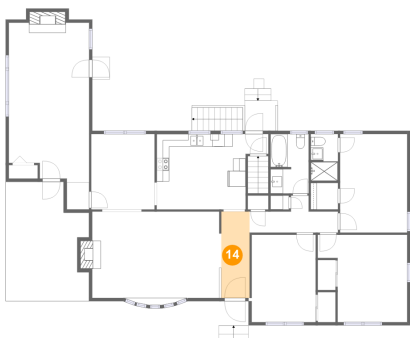
## 13 Floor 2 - Hall



Dimensions: 14'1" x 5'10"  
Area: 54 sq. ft  
Counted as Living Area: Yes

Heated: Yes  
Finished: Yes  
Enclosed: Yes  
Contiguous: Yes  
Permitted: Yes  
Wet Space: No  
Addition: No  
Conversion: No

## 14 Floor 2 - Foyer



Dimensions: 4'6" x 13'8"  
Area: 61 sq. ft  
Counted as Living Area: Yes

Heated: Yes  
Finished: Yes  
Enclosed: Yes  
Contiguous: Yes  
Permitted: Yes  
Wet Space: No  
Addition: No  
Conversion: No

# 2102 Bridle Lane, Sugar Loaf Estates, Cave Spring, Roanoke, Roanoke County, Virginia,

## 15 Floor 2 - W.i.c.



Dimensions: 4'4" x 4'2"  
Area: 18 sq. ft  
Counted as Living Area:  
Yes

Heated: Yes  
Finished: Yes  
Enclosed: Yes  
Contiguous:  
Yes  
Permitted: Yes  
Wet Space: No  
Addition: No  
Conversion: No

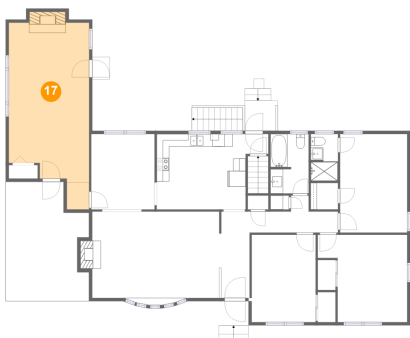
## 16 Floor 2 - Bath



Dimensions: 4'4" x 7'5"  
Area: 31 sq. ft  
Counted as Living Area:  
Yes

Heated: Yes  
Finished: Yes  
Enclosed: Yes  
Contiguous:  
Yes  
Permitted: Yes  
Wet Space: Yes  
Addition: No  
Conversion: No

## 17 Floor 2 - Family Room



Dimensions: 12'9" x 25'3"  
Area: 330 sq. ft  
Counted as Living Area:  
Yes

Heated: Yes  
Finished: Yes  
Enclosed: Yes  
Contiguous:  
Yes  
Permitted: Yes  
Wet Space: No  
Addition: No  
Conversion: No