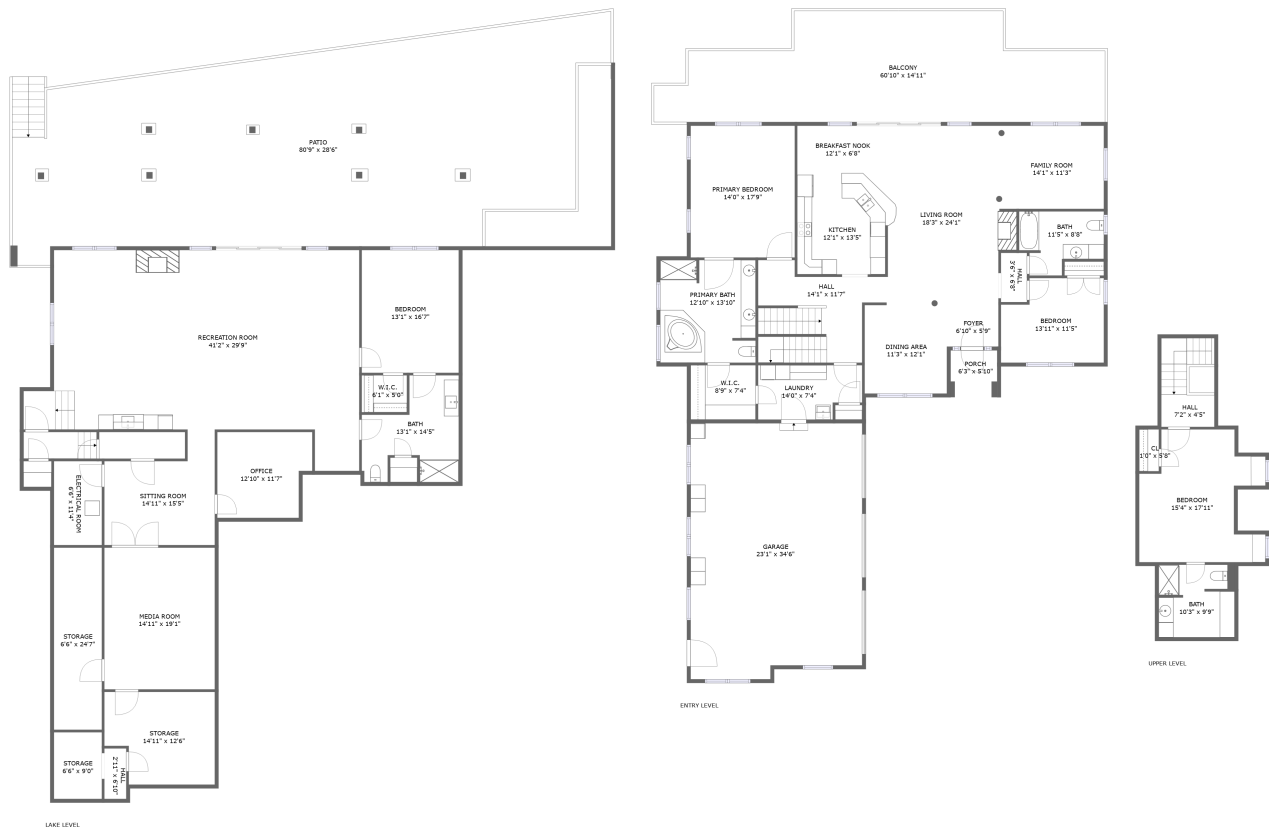


Home report

325 Bull Run Trail, Penhook, Franklin County, Virginia, United States, 24137




Total Area: 4885 sq. ft

Floor 1: 2320 sq. ft, Floor 2: 2150 sq. ft, Floor 3: 415 sq. ft

Excluded: Hall 28 sq. ft, Storage 425 sq. ft, Room Electrical 77 sq. ft, Outdoor Patio 2117 sq. ft, Garage 821 sq. ft, Outdoor Porch 37 sq. ft, Outdoor Balcony 714 sq. ft, Low Ceiling 101 sq. ft

Property summary

 **3** Floors

 **4** Bedrooms

 **4** Bathrooms

 **1** Garages

Home report

325 Bull Run Trail, Penhook, Franklin County, Virginia, United States, 24137



Room dimensions

Floor 1

Total:2320sqft

Excluded: 2647sqft

#		Max Dimensions	sqft	Included
1	W.I.C.	6'1" x 5'0"	30 sq. ft	Yes
2	Hall	2'11" x 6'10"	20 sq. ft	No
3	Bedroom	13'1" x 16'7"	217 sq. ft	Yes
4	Patio	80'9" x 28'6"	2117 sq. ft	No
5	Media Room	14'11" x 19'1"	285 sq. ft	Yes
6	Electrical Room	6'6" x 11'4"	73 sq. ft	No
7	Bath	13'1" x 14'5"	138 sq. ft	Yes
8	Recreation Room	41'2" x 29'9"	1052 sq. ft	Yes
9	Storage	6'6" x 24'7"	159 sq. ft	No
10	Sitting Room	14'11" x 15'5"	184 sq. ft	Yes
11	Storage	14'11" x 12'6"	169 sq. ft	No

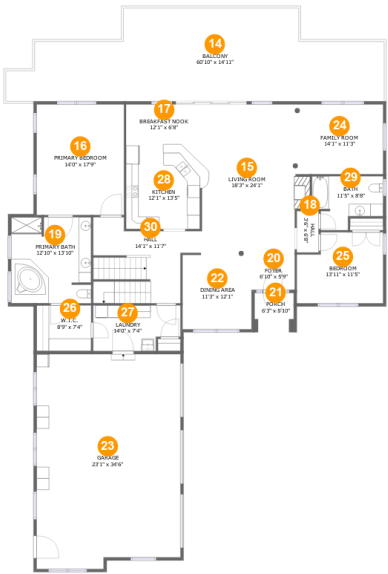
Home report

325 Bull Run Trail, Penhook, Franklin County, Virginia, United States, 24137

#		Max Dimensions	sqft	Included
12	Office	12'10" x 11'7"	137 sq. ft	Yes
13	Storage	6'6" x 9'0"	58 sq. ft	No

Home report

325 Bull Run Trail, Penhook, Franklin County, Virginia, United States, 24137



Room dimensions

Floor 2

Total:2150sqft

Excluded: 1572sqft

#		Max Dimensions	sqft	Included
14	Balcony	60'10" x 14'11"	714 sq. ft	No
15	Living Room	18'3" x 24'1"	386 sq. ft	Yes
16	Primary Bedroom	14'0" x 17'9"	250 sq. ft	Yes
17	Breakfast Nook	12'1" x 6'8"	81 sq. ft	Yes
18	Hall	3'6" x 6'8"	23 sq. ft	Yes
19	Primary Bath	12'10" x 13'10"	176 sq. ft	Yes
20	Foyer	6'10" x 5'9"	39 sq. ft	Yes
21	Porch	6'3" x 5'10"	37 sq. ft	No
22	Dining Area	11'3" x 12'1"	134 sq. ft	Yes
23	Garage	23'1" x 34'6"	775 sq. ft	No
24	Family Room	14'1" x 11'3"	158 sq. ft	Yes

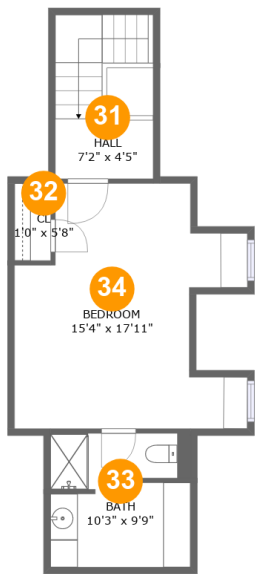
Home report

325 Bull Run Trail, Penhook, Franklin County, Virginia, United States, 24137

#		Max Dimensions	sqft	Included
25	Bedroom	13'11" x 11'5"	145 sq. ft	Yes
26	W.I.C.	8'9" x 7'4"	64 sq. ft	Yes
27	Laundry	14'0" x 7'4"	94 sq. ft	Yes
28	Kitchen	12'1" x 13'5"	161 sq. ft	Yes
29	Bath	11'5" x 8'8"	81 sq. ft	Yes
30	Hall	14'1" x 11'7"	169 sq. ft	Yes

Home report

325 Bull Run Trail, Penhook, Franklin County, Virginia, United States, 24137



Room dimensions

Floor 3 Total:415sqft Excluded: 101sqft

#		Max Dimensions	sqft	Included
31	Hall	7'2" x 4'5"	86 sq. ft	Yes
32	Cl	1'0" x 5'8"	6 sq. ft	Yes
33	Bath	10'3" x 9'9"	71 sq. ft	Yes
34	Bedroom	15'4" x 17'11"	206 sq. ft	Yes

325 Bull Run Trail, Penhook, Franklin County, Virginia, United States, 24137

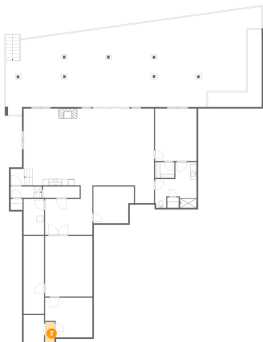
1 Floor 1 - W.I.C.



Max Dimensions: 6'1" x 5'0"
Calculated Area: 30 sq. ft
Included: Yes

Heated: Yes
Finished: Yes
Enclosed: Yes
Contiguous: Yes
Permitted: Yes
Wet space: No
Addition: No
Conversion: No

2 Floor 1 - Hall

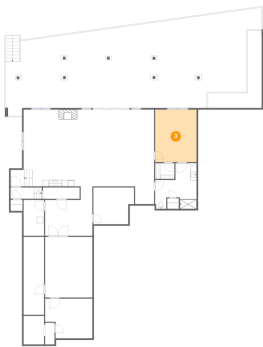


Max Dimensions: 2'11" x 6'10"
Calculated Area: 20 sq. ft
Included: No

Heated: Yes
Finished: Yes
Enclosed: Yes
Contiguous: No
Permitted: Yes
Wet space: No
Addition: No
Conversion: No

325 Bull Run Trail, Penhook, Franklin County, Virginia, United States, 24137

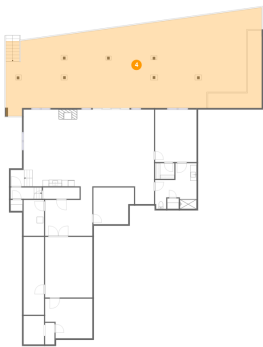
3 Floor 1 - Bedroom



Max Dimensions: 13'1" x 16'7"
Calculated Area: 217 sq. ft
Included: Yes

Heated: Yes
Finished: Yes
Enclosed: Yes
Contiguous: Yes
Permitted: Yes
Wet space: No
Addition: No
Conversion: No

4 Floor 1 - Patio



Max Dimensions: 80'9" x 28'6"
Calculated Area: 2117 sq. ft
Included: No

Heated: No
Finished: Yes
Enclosed: No
Contiguous: Yes
Permitted: Yes
Wet space: No
Addition: No
Conversion: No

5 Floor 1 - Media Room



Max Dimensions: 14'11" x 19'1"
Calculated Area: 285 sq. ft
Included: Yes

Heated: Yes
Finished: Yes
Enclosed: Yes
Contiguous: Yes
Permitted: Yes
Wet space: No
Addition: No
Conversion: No

325 Bull Run Trail, Penhook, Franklin County, Virginia, United States, 24137

6 Floor 1 - Electrical Room



Max Dimensions: 6'6" x 11'4"
Calculated Area: 73 sq. ft
Included: No

Heated: No
Finished: Yes
Enclosed: Yes
Contiguous: Yes
Permitted: Yes
Wet space: No
Addition: No
Conversion: No

7 Floor 1 - Bath



Max Dimensions: 13'1" x 14'5"
Calculated Area: 138 sq. ft
Included: Yes

Heated: Yes
Finished: Yes
Enclosed: Yes
Contiguous: Yes
Permitted: Yes
Wet space: Yes
Addition: No
Conversion: No

8 Floor 1 - Recreation Room



Max Dimensions: 41'2" x 29'9"
Calculated Area: 1052 sq. ft
Included: Yes

Heated: Yes
Finished: Yes
Enclosed: Yes
Contiguous: Yes
Permitted: Yes
Wet space: No
Addition: No
Conversion: No

325 Bull Run Trail, Penhook, Franklin County, Virginia, United States, 24137

9 Floor 1 - Storage



Max Dimensions: 6'6" x 24'7"
Calculated Area: 159 sq. ft
Included: No

Heated: No
Finished: Yes
Enclosed: No
Contiguous: Yes
Permitted: Yes
Wet space: No
Addition: No
Conversion: No

10 Floor 1 - Sitting Room



Max Dimensions: 14'11" x 15'5"
Calculated Area: 184 sq. ft
Included: Yes

Heated: Yes
Finished: Yes
Enclosed: Yes
Contiguous: Yes
Permitted: Yes
Wet space: No
Addition: No
Conversion: No

11 Floor 1 - Storage

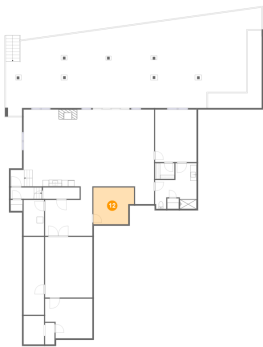


Max Dimensions: 14'11" x 12'6"
Calculated Area: 169 sq. ft
Included: No

Heated: No
Finished: Yes
Enclosed: No
Contiguous: Yes
Permitted: Yes
Wet space: No
Addition: No
Conversion: No

325 Bull Run Trail, Penhook, Franklin County, Virginia, United States, 24137

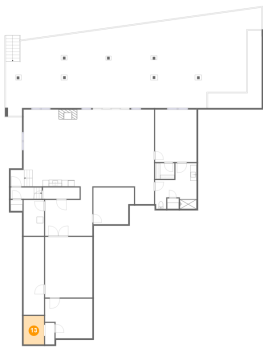
12 Floor 1 - Office



Max Dimensions: 12'10" x 11'7"
Calculated Area: 137 sq. ft
Included: Yes

Heated: Yes
Finished: Yes
Enclosed: Yes
Contiguous: Yes
Permitted: Yes
Wet space: No
Addition: No
Conversion: No

13 Floor 1 - Storage



Max Dimensions: 6'6" x 9'0"
Calculated Area: 58 sq. ft
Included: No

Heated: No
Finished: No
Enclosed: No
Contiguous: No
Permitted: Yes
Wet space: No
Addition: No
Conversion: No

14 Floor 2 - Balcony



Max Dimensions: 60'10" x 14'11"
Calculated Area: 714 sq. ft
Included: No

Heated: No
Finished: Yes
Enclosed: No
Contiguous: Yes
Permitted: Yes
Wet space: No
Addition: No
Conversion: No

325 Bull Run Trail, Penhook, Franklin County, Virginia, United States, 24137

15 Floor 2 - Living Room



Max Dimensions: 18'3" x 24'1"
Calculated Area: 386 sq. ft
Included: Yes

Heated: Yes
Finished: Yes
Enclosed: Yes
Contiguous: Yes
Permitted: Yes
Wet space: No
Addition: No
Conversion: No

16 Floor 2 - Primary Bedroom



Max Dimensions: 14'0" x 17'9"
Calculated Area: 250 sq. ft
Included: Yes

Heated: Yes
Finished: Yes
Enclosed: Yes
Contiguous: Yes
Permitted: Yes
Wet space: No
Addition: No
Conversion: No

17 Floor 2 - Breakfast Nook



Max Dimensions: 12'1" x 6'8"
Calculated Area: 81 sq. ft
Included: Yes

Heated: Yes
Finished: Yes
Enclosed: Yes
Contiguous: Yes
Permitted: Yes
Wet space: No
Addition: No
Conversion: No

325 Bull Run Trail, Penhook, Franklin County, Virginia, United States, 24137

18 Floor 2 - Hall



Max Dimensions: 3'6" x 6'8"
Calculated Area: 23 sq. ft
Included: Yes

Heated: Yes
Finished: Yes
Enclosed: Yes
Contiguous: Yes
Permitted: Yes
Wet space: No
Addition: No
Conversion: No

19 Floor 2 - Primary Bath



Max Dimensions: 12'10" x 13'10"
Calculated Area: 176 sq. ft
Included: Yes

Heated: Yes
Finished: Yes
Enclosed: Yes
Contiguous: Yes
Permitted: Yes
Wet space: Yes
Addition: No
Conversion: No

20 Floor 2 - Foyer



Max Dimensions: 6'10" x 5'9"
Calculated Area: 39 sq. ft
Included: Yes

Heated: Yes
Finished: Yes
Enclosed: Yes
Contiguous: Yes
Permitted: Yes
Wet space: No
Addition: No
Conversion: No

325 Bull Run Trail, Penhook, Franklin County, Virginia, United States, 24137

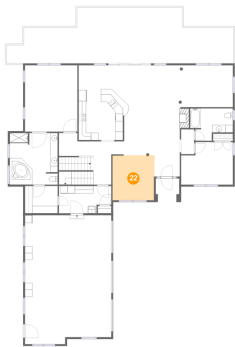
21 Floor 2 - Porch



Max Dimensions: 6'3" x 5'10"
Calculated Area: 37 sq. ft
Included: No

Heated: No
Finished: Yes
Enclosed: No
Contiguous: Yes
Permitted: Yes
Wet space: No
Addition: No
Conversion: No

22 Floor 2 - Dining Area



Max Dimensions: 11'3" x 12'1"
Calculated Area: 134 sq. ft
Included: Yes

Heated: Yes
Finished: Yes
Enclosed: Yes
Contiguous: Yes
Permitted: Yes
Wet space: No
Addition: No
Conversion: No

23 Floor 2 - Garage



Max Dimensions: 23'1" x 34'6"
Calculated Area: 775 sq. ft
Included: No

Heated: No
Finished: No
Enclosed: Yes
Contiguous: Yes
Permitted: Yes
Wet space: No
Addition: No
Conversion: No

325 Bull Run Trail, Penhook, Franklin County, Virginia, United States, 24137

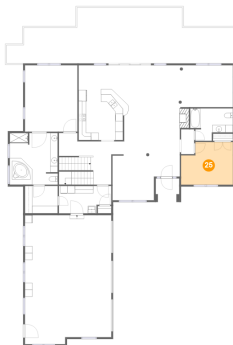
24 Floor 2 - Family Room



Max Dimensions: 14'1" x 11'3"
Calculated Area: 158 sq. ft
Included: Yes

Heated: Yes
Finished: Yes
Enclosed: Yes
Contiguous: Yes
Permitted: Yes
Wet space: No
Addition: No
Conversion: No

25 Floor 2 - Bedroom



Max Dimensions: 13'11" x 11'5"
Calculated Area: 145 sq. ft
Included: Yes

Heated: Yes
Finished: Yes
Enclosed: Yes
Contiguous: Yes
Permitted: Yes
Wet space: No
Addition: No
Conversion: No

26 Floor 2 - W.I.C.



Max Dimensions: 8'9" x 7'4"
Calculated Area: 64 sq. ft
Included: Yes

Heated: Yes
Finished: Yes
Enclosed: Yes
Contiguous: Yes
Permitted: Yes
Wet space: No
Addition: No
Conversion: No

325 Bull Run Trail, Penhook, Franklin County, Virginia, United States, 24137

27 Floor 2 - Laundry



Max Dimensions: 14'0" x 7'4"
Calculated Area: 94 sq. ft
Included: Yes

Heated: Yes
Finished: Yes
Enclosed: Yes
Contiguous: Yes
Permitted: Yes
Wet space: No
Addition: No
Conversion: No

28 Floor 2 - Kitchen



Max Dimensions: 12'1" x 13'5"
Calculated Area: 161 sq. ft
Included: Yes

Heated: Yes
Finished: Yes
Enclosed: Yes
Contiguous: Yes
Permitted: Yes
Wet space: No
Addition: No
Conversion: No

29 Floor 2 - Bath

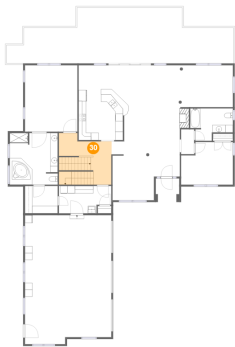


Max Dimensions: 11'5" x 8'8"
Calculated Area: 81 sq. ft
Included: Yes

Heated: Yes
Finished: Yes
Enclosed: Yes
Contiguous: Yes
Permitted: Yes
Wet space: Yes
Addition: No
Conversion: No

325 Bull Run Trail, Penhook, Franklin County, Virginia, United States, 24137

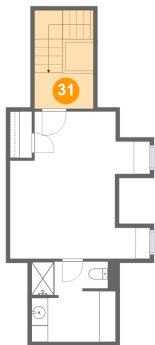
30 Floor 2 - Hall



Max Dimensions: 14'1" x 11'7"
Calculated Area: 169 sq. ft
Included: Yes

Heated: Yes
Finished: Yes
Enclosed: Yes
Contiguous: Yes
Permitted: Yes
Wet space: No
Addition: No
Conversion: No

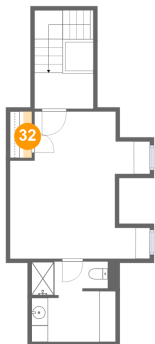
31 Floor 3 - Hall



Max Dimensions: 7'2" x 4'5"
Calculated Area: 86 sq. ft
Included: Yes

Heated: Yes
Finished: Yes
Enclosed: Yes
Contiguous: Yes
Permitted: Yes
Wet space: No
Addition: No
Conversion: No

32 Floor 3 - Cl



Max Dimensions: 1'0" x 5'8"
Calculated Area: 6 sq. ft
Included: Yes

Heated: Yes
Finished: Yes
Enclosed: Yes
Contiguous: Yes
Permitted: Yes
Wet space: No
Addition: No
Conversion: No

325 Bull Run Trail, Penhook, Franklin County, Virginia, United States, 24137

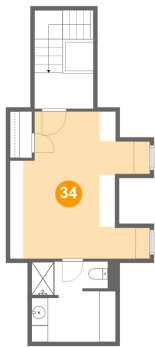
33 Floor 3 - Bath



Max Dimensions: 10'3" x 9'9"
Calculated Area: 71 sq. ft
Included: Yes

Heated: Yes
Finished: Yes
Enclosed: Yes
Contiguous: Yes
Permitted: Yes
Wet space: Yes
Addition: No
Conversion: No

34 Floor 3 - Bedroom



Max Dimensions: 15'4" x 17'11"
Calculated Area: 206 sq. ft
Included: Yes

Heated: Yes
Finished: Yes
Enclosed: Yes
Contiguous: Yes
Permitted: Yes
Wet space: No
Addition: No
Conversion: No