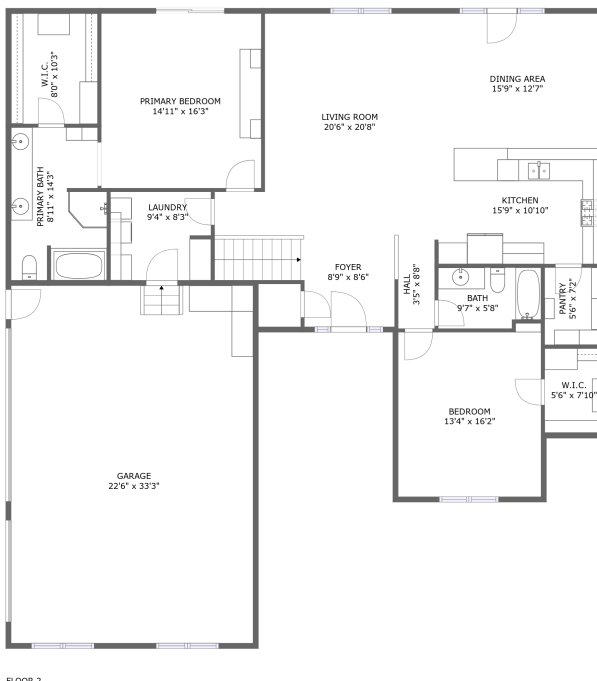
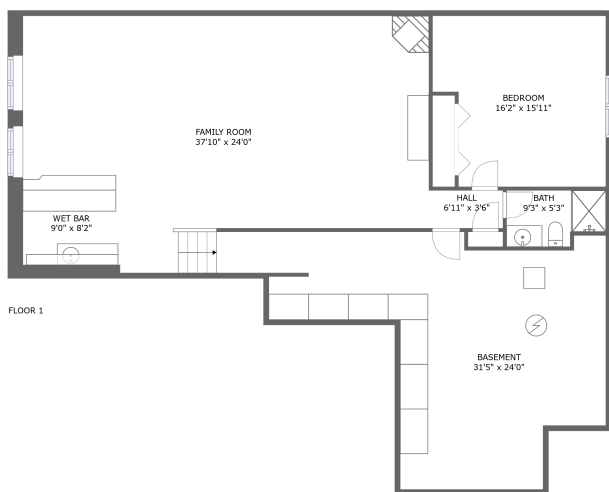



515 Reece Circle, Goddard, Sedgwick County, Kansas, United States, 67052



Property summary

 **1** Garages

 **3** Bedrooms

 **3** Bathrooms

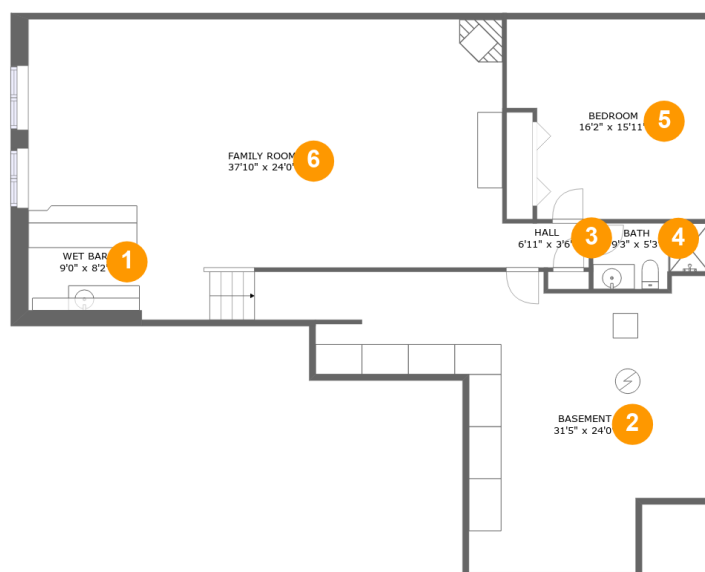
 **0** Half baths

 **2** Floors

 **3,166** Gross living area sqft

 **4,505** Total sqft

515 Reece Circle, Goddard, Sedgwick County, Kansas, United States, 67052



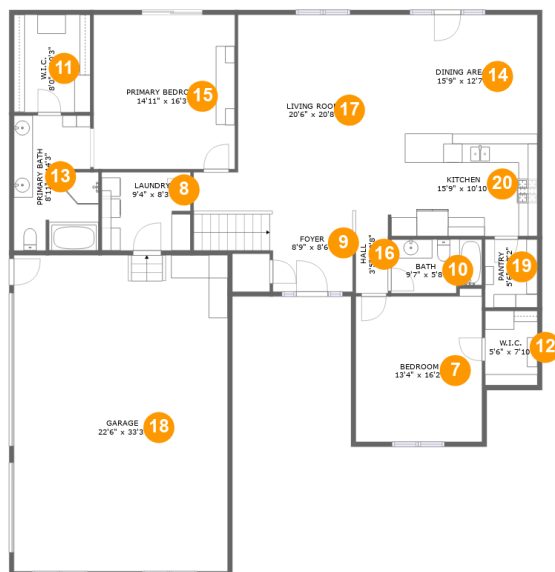
Room dimensions

Floor 1

Total sqft: 1829 Living area: 1284

#		Dimensions	sqft	Counted as living area
1	Bar	9'0" x 8'2"	74 sq. ft	Yes
2	Basement	31'5" x 24'0"	505 sq. ft	No
3	Hall	6'11" x 3'6"	24 sq. ft	Yes
4	Bath	9'3" x 5'3"	44 sq. ft	Yes
5	Bedroom	16'2" x 15'11"	236 sq. ft	Yes
6	Living Room	37'10" x 24'0"	772 sq. ft	Yes

515 Reece Circle, Goddard, Sedgwick County, Kansas, United States, 67052



Room dimensions

Floor 2

Total sqft: 2676 Living area: 1882

#		Dimensions	sqft	Counted as living area
7	Bedroom	13'4" x 16'2"	206 sq. ft	Yes
8	Utility	9'4" x 8'3"	77 sq. ft	Yes
9	Entry	8'9" x 8'6"	108 sq. ft	Yes
10	Bath	9'7" x 5'8"	52 sq. ft	Yes
11	Cl	8'0" x 10'3"	83 sq. ft	Yes
12	Cl	5'6" x 7'10"	43 sq. ft	Yes
13	Bath	8'11" x 14'3"	120 sq. ft	Yes
14	Dining Room	15'9" x 12'7"	198 sq. ft	Yes
15	Bedroom	14'11" x 16'3"	243 sq. ft	Yes
16	Hall	3'5" x 8'8"	29 sq. ft	Yes
17	Living Room	20'6" x 20'8"	347 sq. ft	Yes

Scan captured on Fri, 13 Dec 2024 02:27:30 GMT

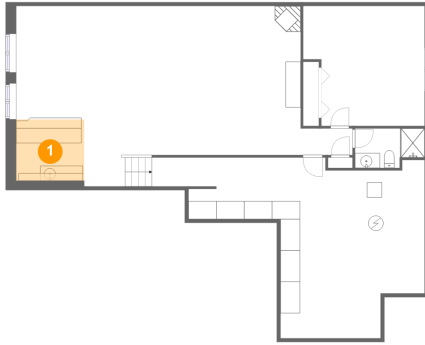
Information is calculated by Cubicasa technology deemed highly reliable but not guaranteed.

**515 Reece Circle, Goddard, Sedgwick County, Kansas,
United States, 67052**

#		Dimensions	sqft	Counted as living area
18	Garage	22'6" x 33'3"	751 sq. ft	No
19	Pantry	5'6" x 7'2"	40 sq. ft	Yes
20	Kitchen	15'9" x 10'10"	169 sq. ft	Yes

515 Reece Circle, Goddard, Sedgwick County, Kansas, United States, 67052

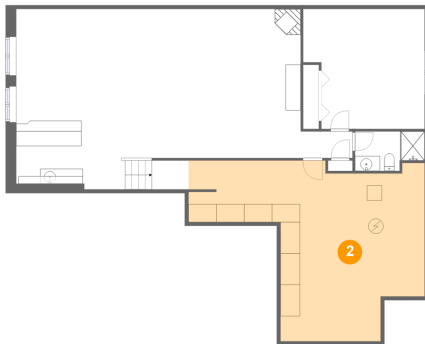
1 Floor 1 - Bar



Dimensions: 9'0" x 8'2"
Area: 74 sq. ft
Counted as living area: Yes

Heated: Yes
Finished: Yes
Enclosed: Yes
Contiguous: Yes
Permitted: Yes
Wet space: No
Addition: No
Conversion: No

2 Floor 1 - Basement

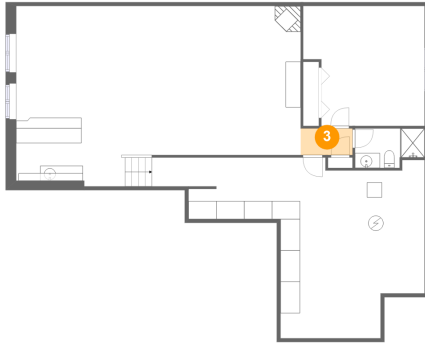


Dimensions: 31'5" x 24'0"
Area: 505 sq. ft
Counted as living area: No

Heated: Yes
Finished: No
Enclosed: Yes
Contiguous: Yes
Permitted: Yes
Wet space: No
Addition: No
Conversion: No

515 Reece Circle, Goddard, Sedgwick County, Kansas, United States, 67052

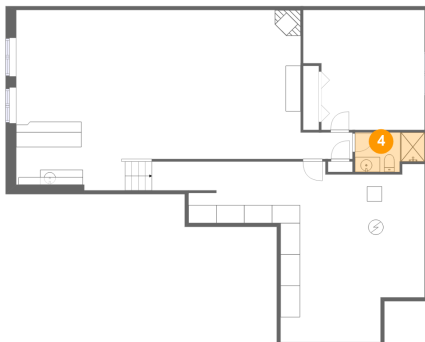
3 Floor 1 - Hall



Dimensions: 6'11" x 3'6"
Area: 24 sq. ft
Counted as living area: Yes

Heated: Yes
Finished: Yes
Enclosed: Yes
Contiguous: Yes
Permitted: Yes
Wet space: No
Addition: No
Conversion: No

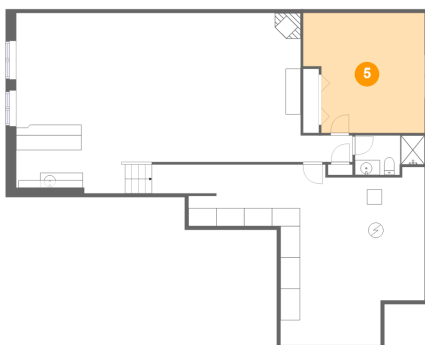
4 Floor 1 - Bath



Dimensions: 9'3" x 5'3"
Area: 44 sq. ft
Counted as living area: Yes

Heated: Yes
Finished: Yes
Enclosed: Yes
Contiguous: Yes
Permitted: Yes
Wet space: Yes
Addition: No
Conversion: No

5 Floor 1 - Bedroom

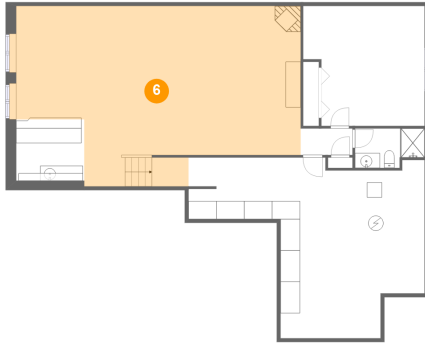


Dimensions: 16'2" x 15'11"
Area: 236 sq. ft
Counted as living area: Yes

Heated: Yes
Finished: Yes
Enclosed: Yes
Contiguous: Yes
Permitted: Yes
Wet space: No
Addition: No
Conversion: No

515 Reece Circle, Goddard, Sedgwick County, Kansas, United States, 67052

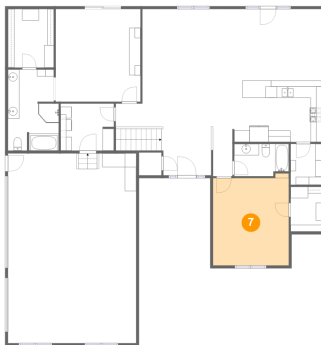
6 Floor 1 - Living Room



Dimensions: 37'10" x 24'0"
Area: 772 sq. ft
Counted as living area: Yes

Heated: Yes
Finished: Yes
Enclosed: Yes
Contiguous: Yes
Permitted: Yes
Wet space: No
Addition: No
Conversion: No

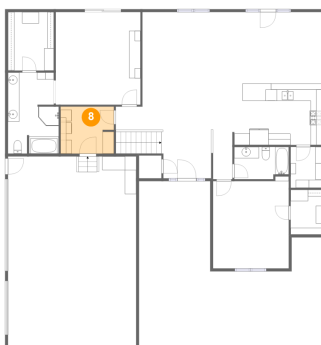
7 Floor 2 - Bedroom



Dimensions: 13'4" x 16'2"
Area: 206 sq. ft
Counted as living area: Yes

Heated: Yes
Finished: Yes
Enclosed: Yes
Contiguous: Yes
Permitted: Yes
Wet space: No
Addition: No
Conversion: No

8 Floor 2 - Utility

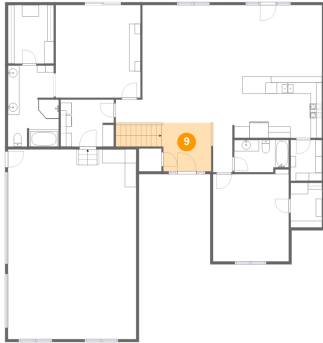


Dimensions: 9'4" x 8'3"
Area: 77 sq. ft
Counted as living area: Yes

Heated: Yes
Finished: Yes
Enclosed: Yes
Contiguous: Yes
Permitted: Yes
Wet space: No
Addition: No
Conversion: No

515 Reece Circle, Goddard, Sedgwick County, Kansas,
United States, 67052

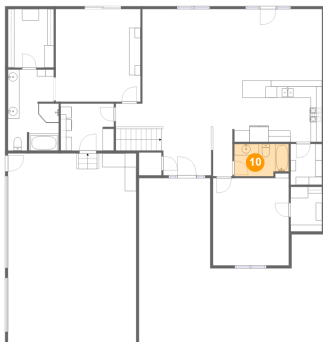
9 Floor 2 - Entry



Dimensions: 8'9" x 8'6"
Area: 108 sq. ft
Counted as living area: Yes

Heated: Yes
Finished: Yes
Enclosed: Yes
Contiguous: Yes
Permitted: Yes
Wet space: No
Addition: No
Conversion: No

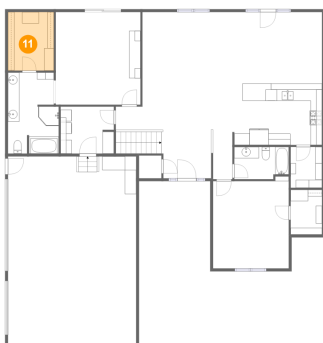
10 Floor 2 - Bath



Dimensions: 9'7" x 5'8"
Area: 52 sq. ft
Counted as living area: Yes

Heated: Yes
Finished: Yes
Enclosed: Yes
Contiguous: Yes
Permitted: Yes
Wet space: Yes
Addition: No
Conversion: No

11 Floor 2 - Cl

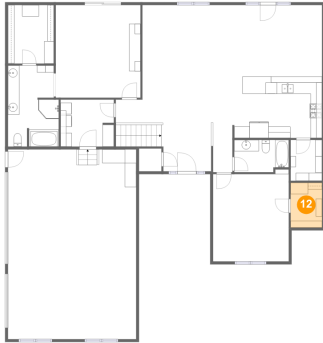


Dimensions: 8'0" x 10'3"
Area: 83 sq. ft
Counted as living area: Yes

Heated: Yes
Finished: Yes
Enclosed: Yes
Contiguous: Yes
Permitted: Yes
Wet space: No
Addition: No
Conversion: No

515 Reece Circle, Goddard, Sedgwick County, Kansas, United States, 67052

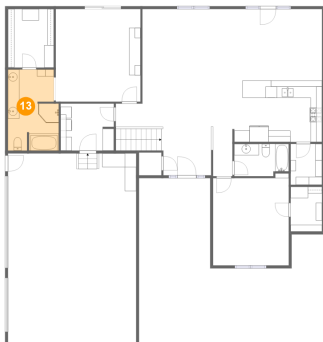
12 Floor 2 - Cl



Dimensions: 5'6" x 7'10"
Area: 43 sq. ft
Counted as living area: Yes

Heated: Yes
Finished: Yes
Enclosed: Yes
Contiguous: Yes
Permitted: Yes
Wet space: No
Addition: No
Conversion: No

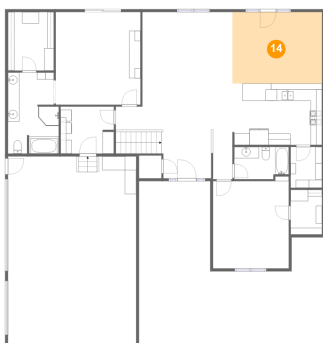
13 Floor 2 - Bath



Dimensions: 8'11" x 14'3"
Area: 120 sq. ft
Counted as living area: Yes

Heated: Yes
Finished: Yes
Enclosed: Yes
Contiguous: Yes
Permitted: Yes
Wet space: Yes
Addition: No
Conversion: No

14 Floor 2 - Dining Room

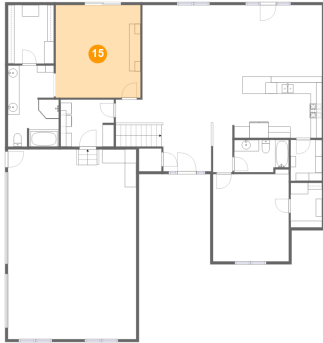


Dimensions: 15'9" x 12'7"
Area: 198 sq. ft
Counted as living area: Yes

Heated: Yes
Finished: Yes
Enclosed: Yes
Contiguous: Yes
Permitted: Yes
Wet space: No
Addition: No
Conversion: No

515 Reece Circle, Goddard, Sedgwick County, Kansas,
United States, 67052

15 Floor 2 - Bedroom



Dimensions: 14'11" x 16'3"
Area: 243 sq. ft
Counted as living area: Yes

Heated: Yes
Finished: Yes
Enclosed: Yes
Contiguous: Yes
Permitted: Yes
Wet space: No
Addition: No
Conversion: No

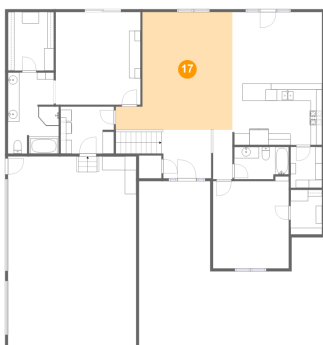
16 Floor 2 - Hall



Dimensions: 3'5" x 8'8"
Area: 29 sq. ft
Counted as living area: Yes

Heated: Yes
Finished: Yes
Enclosed: Yes
Contiguous: Yes
Permitted: Yes
Wet space: No
Addition: No
Conversion: No

17 Floor 2 - Living Room

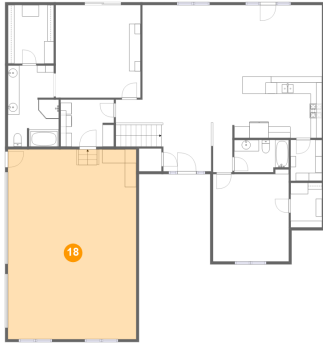


Dimensions: 20'6" x 20'8"
Area: 347 sq. ft
Counted as living area: Yes

Heated: Yes
Finished: Yes
Enclosed: Yes
Contiguous: Yes
Permitted: Yes
Wet space: No
Addition: No
Conversion: No

515 Reece Circle, Goddard, Sedgwick County, Kansas, United States, 67052

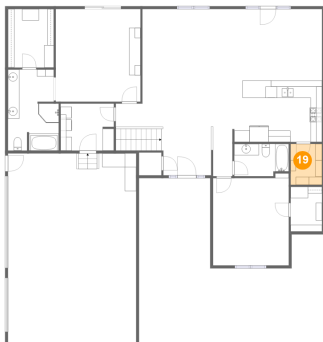
18 Floor 2 - Garage



Dimensions: 22'6" x 33'3"
Area: 751 sq. ft
Counted as living area: No

Heated: No
Finished: No
Enclosed: Yes
Contiguous: Yes
Permitted: Yes
Wet space: No
Addition: No
Conversion: No

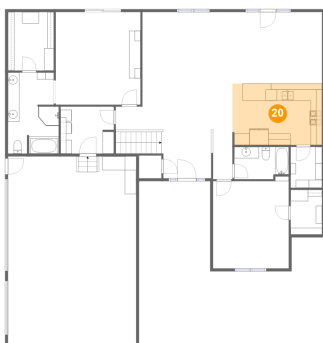
19 Floor 2 - Pantry



Dimensions: 5'6" x 7'2"
Area: 40 sq. ft
Counted as living area: Yes

Heated: Yes
Finished: Yes
Enclosed: Yes
Contiguous: Yes
Permitted: Yes
Wet space: No
Addition: No
Conversion: No

20 Floor 2 - Kitchen



Dimensions: 15'9" x 10'10"
Area: 169 sq. ft
Counted as living area: Yes

Heated: Yes
Finished: Yes
Enclosed: Yes
Contiguous: Yes
Permitted: Yes
Wet space: No
Addition: No
Conversion: No