



## Measurement Report

Measurement Date	January 26, 2023
Client Name	Katie Crawford - RE/MAX Preferred Choice
Property Address	118-9730 174 Street NW, Edmonton, AB
Property Type	Condo
Exterior Wall Thickness	N/A
Measurement Equipment	Laser

## Floor Area Totals

	Level	Metric (m <sup>2</sup> )	Imperial (ft <sup>2</sup> )
Main Floor	1	91.04	980.00
<b>Total Above Ground RMS Area</b>		<b>91.04</b>	<b>980.00</b>

## Room Dimensions

	Level	Metric (m)	Imperial (ft)
Living/Dining Room	1	4.11 x 4.75	13.48 x 15.58
Dining Room	1	3.73 x 3.24	12.24 x 10.63
Kitchen	1	2.81 x 2.75	9.22 x 9.02
Primary Bedroom	1	3.05 x 6.29	10.01 x 20.64
Bedroom 2	1	2.81 x 4.53	9.22 x 14.86

## Bathroom Count

	Level	Pieces
Bathroom 1	1	3
Bathroom 2	1	4
Bathroom 3	2	
Bathroom 4	B	

### Measuring Process

Measurements have been completed and verified using the RMS guidelines. Measurements were obtained using lasers for the interior areas.

Room dimensions are largest length and width; parts of room may be smaller. Room area is not always equal to product of length and width.

587-566-6774

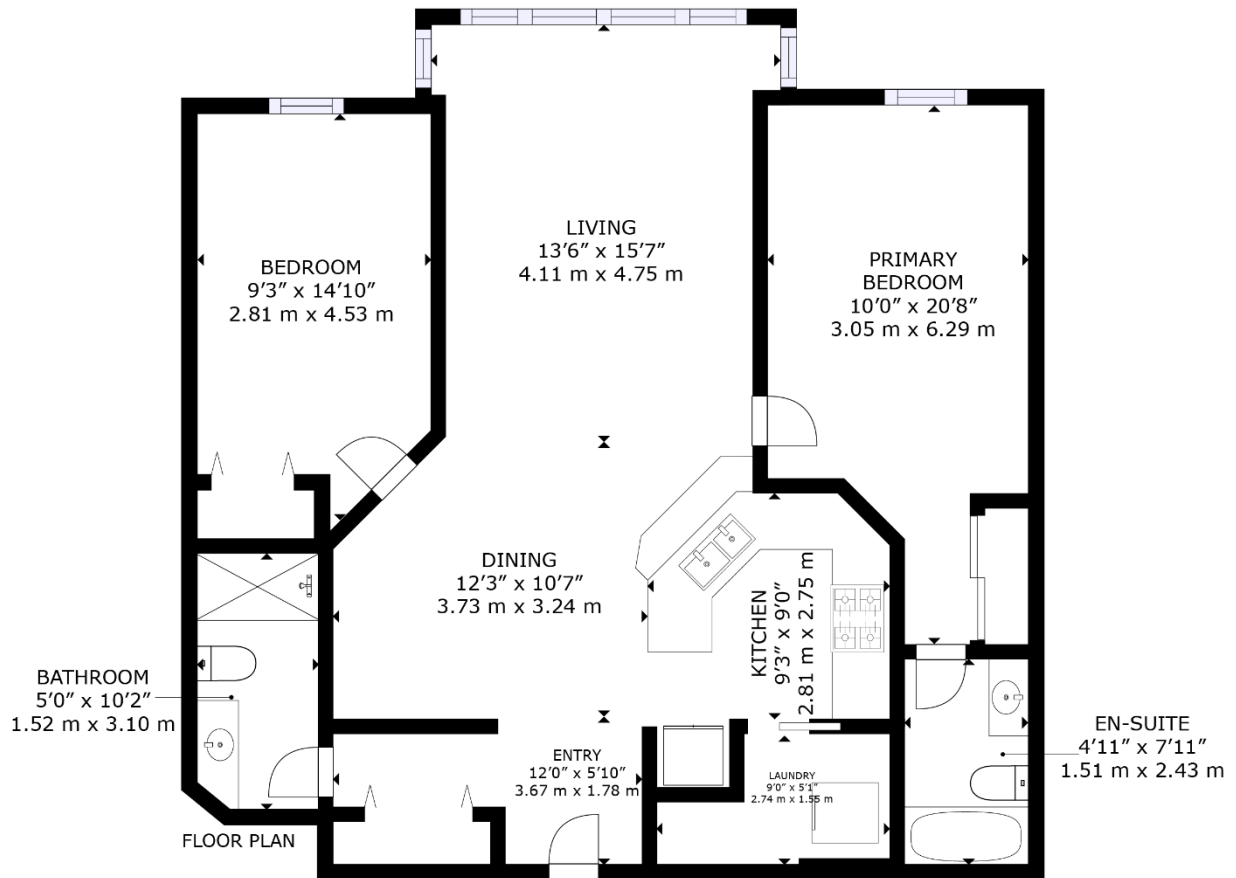
info@jvisuals.ca

www.jvisuals.ca

# Floor Plans & Dimensions

## #118-9730 174 Avenue NW, Edmonton, AB

### Floor 1



TOTAL RMS: 980 sq ft, 91.04 m<sup>2</sup>

Disclaimer: All measurements were obtained using the RMS guidelines. Measurements are to RECA standards and based upon the reliability of the equipment used and personnel expertise. We are not responsible for any damage, loss, or manipulation to the information provided on this document and its use from here on forward.