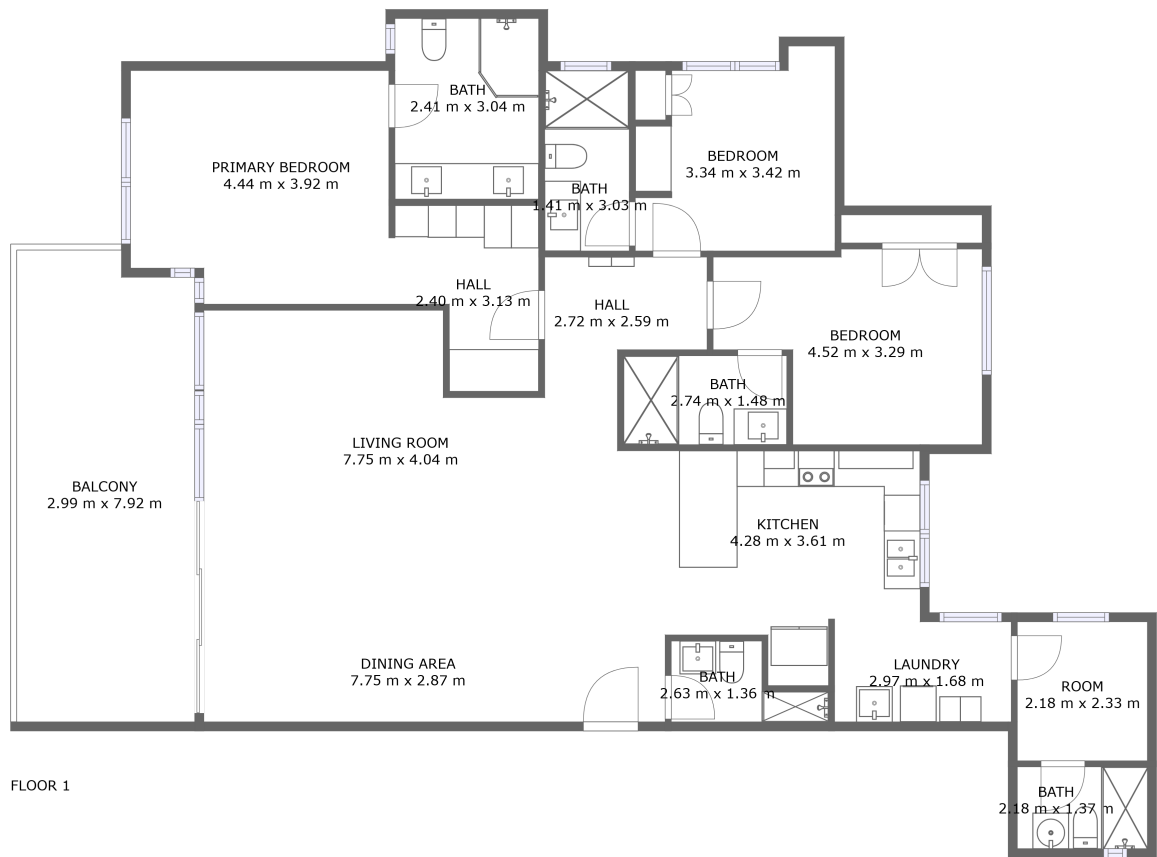





Lighthouse Torre A, Apartamento 10A, Rio Hato, Cloclé, Panama, Apartamento 10A





Property summary

**2** Garages

**4** Bedrooms

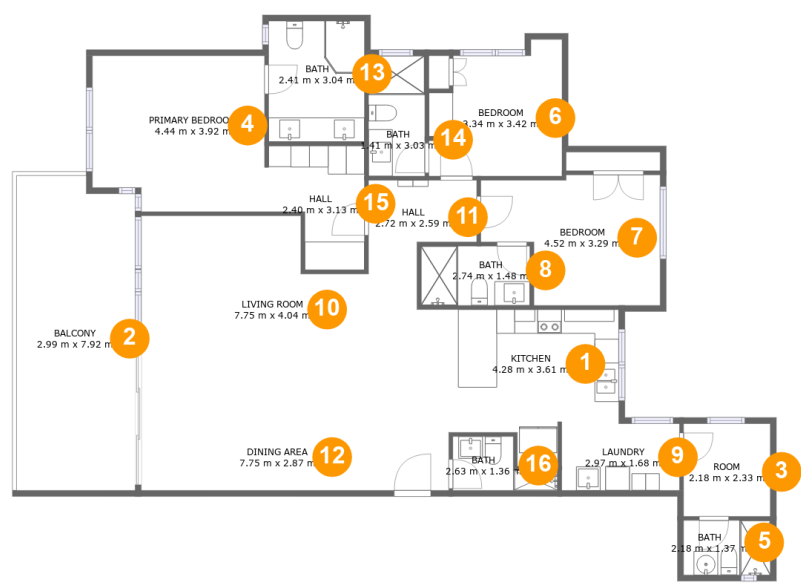
**5** Bathrooms

**0** Half baths

**1** Floors

Home report

Lighthouse Torre A,Apartamento 10A,Rio Hato,Clocle,Panama,  
Apartamento 10A



Room dimensions

Floor 1

Total m2: 173    Living area: 150

#		Dimensions	m2	Counted as living area
1	Kitchen	4.28 m x 3.61 m	14 m2	Yes
2	Balcony	2.99 m x 7.92 m	23 m2	No
3	Room	2.18 m x 2.33 m	5 m2	Yes
4	Primary Bedroom	4.44 m x 3.92 m	16 m2	Yes
5	Bath	2.18 m x 1.37 m	3 m2	Yes
6	Bedroom	3.34 m x 3.42 m	10 m2	Yes
7	Bedroom	4.52 m x 3.29 m	12 m2	Yes
8	Bath	2.74 m x 1.48 m	4 m2	Yes
9	Laundry	2.97 m x 1.68 m	5 m2	Yes
10	Living Room	7.75 m x 4.04 m	25 m2	Yes
11	Hall	2.72 m x 2.59 m	6 m2	Yes

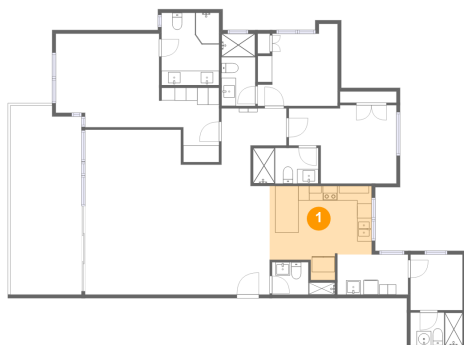
Home report

## Lighthouse Torre A, Apartamento 10A, Rio Hato, Clocle, Panama, Apartamento 10A

#		Dimensions	m2	Counted as living area
12	Dining Area	7.75 m x 2.87 m	22 m2	Yes
13	Bath	2.41 m x 3.04 m	7 m2	Yes
14	Bath	1.41 m x 3.03 m	4 m2	Yes
15	Hall	2.40 m x 3.13 m	6 m2	Yes
16	Bath	2.63 m x 1.36 m	3 m2	Yes

# Lighthouse Torre A, Apartamento 10A, Rio Hato, Cloclé, Panama, Apartamento 10A

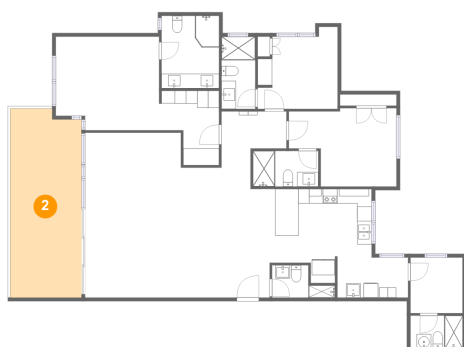
## 1 Floor 1 - Kitchen



Dimensions: 4.28 m x 3.61 m  
Area: 14 m<sup>2</sup>  
Counted as living area: Yes

Heated: Yes  
Finished: Yes  
Enclosed: Yes  
Contiguous: Yes  
Permitted: Yes  
Wet space: No  
Addition: No  
Conversion: No

## 2 Floor 1 - Balcony



Dimensions: 2.99 m x 7.92 m  
Area: 23 m<sup>2</sup>  
Counted as living area: No

Heated: No  
Finished: Yes  
Enclosed: No  
Contiguous: Yes  
Permitted: Yes  
Wet space: No  
Addition: No  
Conversion: No

# Lighthouse Torre A, Apartamento 10A, Rio Hato, Clocle, Panama, Apartamento 10A

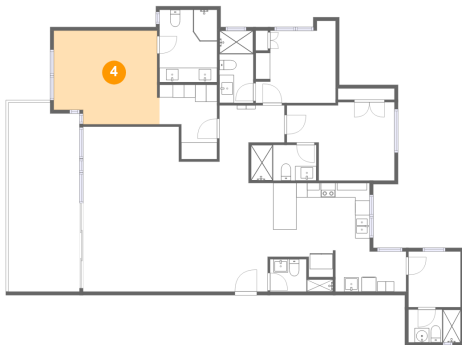
## 3 Floor 1 - Room



Dimensions: 2.18 m x 2.33 m  
Area: 5 m<sup>2</sup>  
Counted as living area: Yes

Heated: Yes  
Finished: Yes  
Enclosed: Yes  
Contiguous: Yes  
Permitted: Yes  
Wet space: No  
Addition: No  
Conversion: No

## 4 Floor 1 - Primary Bedroom



Dimensions: 4.44 m x 3.92 m  
Area: 16 m<sup>2</sup>  
Counted as living area: Yes

Heated: Yes  
Finished: Yes  
Enclosed: Yes  
Contiguous: Yes  
Permitted: Yes  
Wet space: No  
Addition: No  
Conversion: No

## 5 Floor 1 - Bath

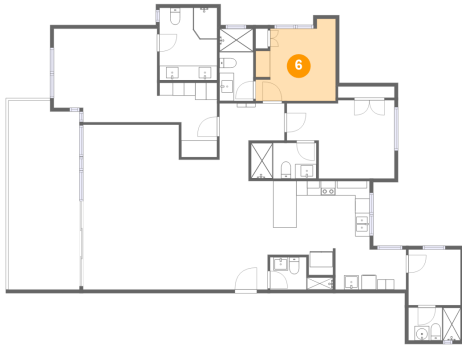


Dimensions: 2.18 m x 1.37 m  
Area: 3 m<sup>2</sup>  
Counted as living area: Yes

Heated: Yes  
Finished: Yes  
Enclosed: Yes  
Contiguous: Yes  
Permitted: Yes  
Wet space: Yes  
Addition: No  
Conversion: No

# Lighthouse Torre A, Apartamento 10A, Rio Hato, Clocle, Panama, Apartamento 10A

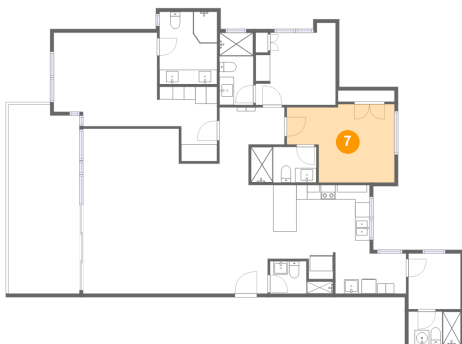
## 6 Floor 1 - Bedroom



Dimensions: 3.34 m x 3.42 m  
Area: 10 m<sup>2</sup>  
Counted as living area: Yes

Heated: Yes  
Finished: Yes  
Enclosed: Yes  
Contiguous: Yes  
Permitted: Yes  
Wet space: No  
Addition: No  
Conversion: No

## 7 Floor 1 - Bedroom



Dimensions: 4.52 m x 3.29 m  
Area: 12 m<sup>2</sup>  
Counted as living area: Yes

Heated: Yes  
Finished: Yes  
Enclosed: Yes  
Contiguous: Yes  
Permitted: Yes  
Wet space: No  
Addition: No  
Conversion: No

## 8 Floor 1 - Bath

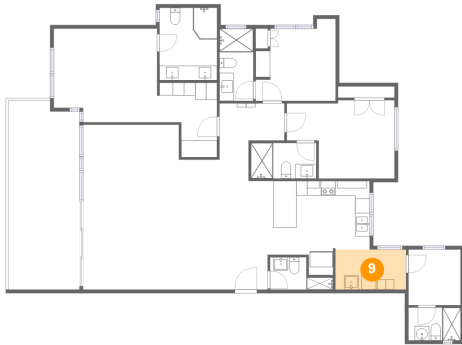


Dimensions: 2.74 m x 1.48 m  
Area: 4 m<sup>2</sup>  
Counted as living area: Yes

Heated: Yes  
Finished: Yes  
Enclosed: Yes  
Contiguous: Yes  
Permitted: Yes  
Wet space: Yes  
Addition: No  
Conversion: No

# Lighthouse Torre A, Apartamento 10A, Rio Hato, Clocle, Panama, Apartamento 10A

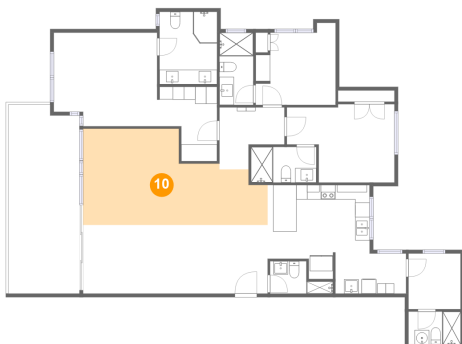
## 9 Floor 1 - Laundry



Dimensions: 2.97 m x 1.68 m  
Area: 5 m<sup>2</sup>  
Counted as living area: Yes

Heated: Yes  
Finished: Yes  
Enclosed: Yes  
Contiguous: Yes  
Permitted: Yes  
Wet space: No  
Addition: No  
Conversion: No

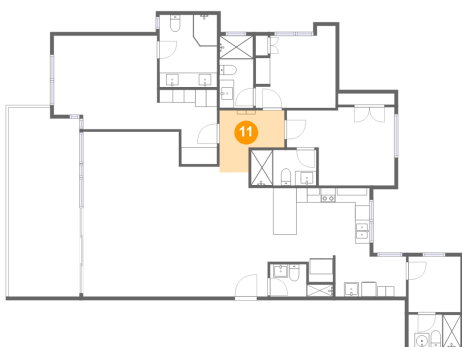
## 10 Floor 1 - Living Room



Dimensions: 7.75 m x 4.04 m  
Area: 25 m<sup>2</sup>  
Counted as living area: Yes

Heated: Yes  
Finished: Yes  
Enclosed: Yes  
Contiguous: Yes  
Permitted: Yes  
Wet space: No  
Addition: No  
Conversion: No

## 11 Floor 1 - Hall



Dimensions: 2.72 m x 2.59 m  
Area: 6 m<sup>2</sup>  
Counted as living area: Yes

Heated: Yes  
Finished: Yes  
Enclosed: Yes  
Contiguous: Yes  
Permitted: Yes  
Wet space: No  
Addition: No  
Conversion: No

# Lighthouse Torre A, Apartamento 10A, Rio Hato, Clocle, Panama, Apartamento 10A

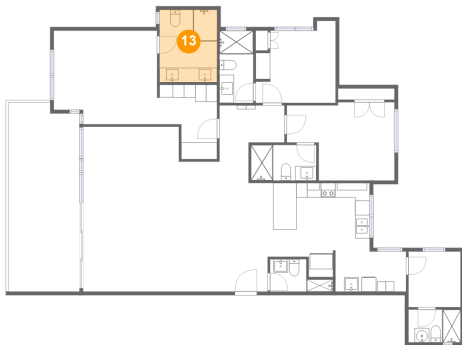
## 12 Floor 1 - Dining Area



Dimensions: 7.75 m x 2.87 m  
Area: 22 m<sup>2</sup>  
Counted as living area: Yes

Heated: Yes  
Finished: Yes  
Enclosed: Yes  
Contiguous: Yes  
Permitted: Yes  
Wet space: No  
Addition: No  
Conversion: No

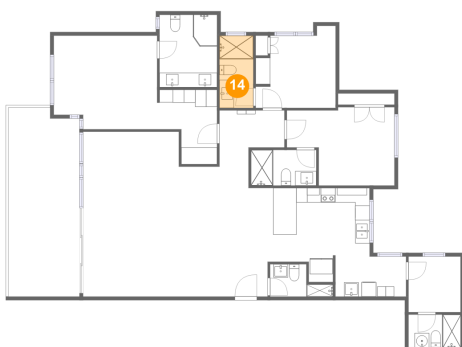
## 13 Floor 1 - Bath



Dimensions: 2.41 m x 3.04 m  
Area: 7 m<sup>2</sup>  
Counted as living area: Yes

Heated: Yes  
Finished: Yes  
Enclosed: Yes  
Contiguous: Yes  
Permitted: Yes  
Wet space: Yes  
Addition: No  
Conversion: No

## 14 Floor 1 - Bath



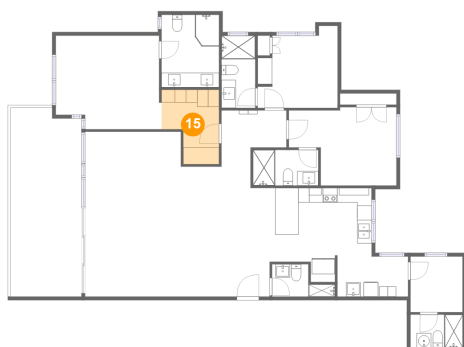
Dimensions: 1.41 m x 3.03 m  
Area: 4 m<sup>2</sup>  
Counted as living area: Yes

Heated: Yes  
Finished: Yes  
Enclosed: Yes  
Contiguous: Yes  
Permitted: Yes  
Wet space: Yes  
Addition: No  
Conversion: No



# Lighthouse Torre A, Apartamento 10A, Rio Hato, Clocle, Panama, Apartamento 10A

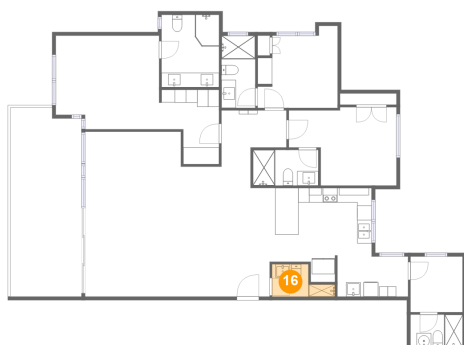
## 15 Floor 1 - Hall



Dimensions: 2.40 m x 3.13 m  
Area: 6 m2  
Counted as living area: Yes

Heated: Yes  
Finished: Yes  
Enclosed: Yes  
Contiguous: Yes  
Permitted: Yes  
Wet space: No  
Addition: No  
Conversion: No

## 16 Floor 1 - Bath



Dimensions: 2.63 m x 1.36 m  
Area: 3 m2  
Counted as living area: Yes

Heated: Yes  
Finished: Yes  
Enclosed: Yes  
Contiguous: Yes  
Permitted: Yes  
Wet space: Yes  
Addition: No  
Conversion: No