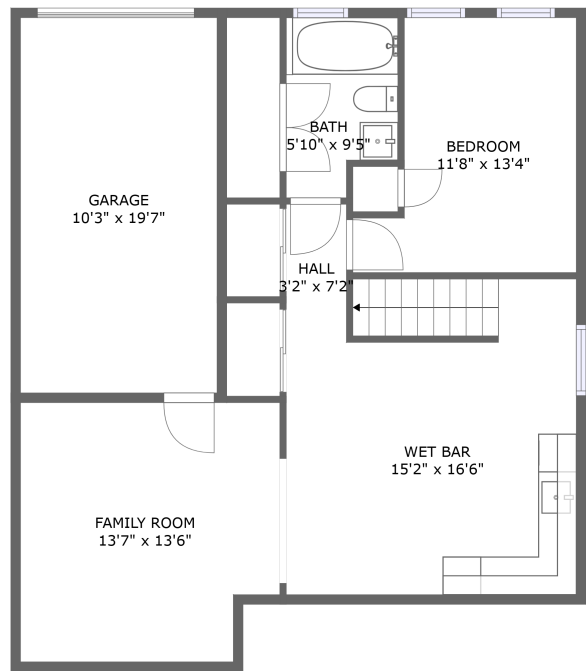
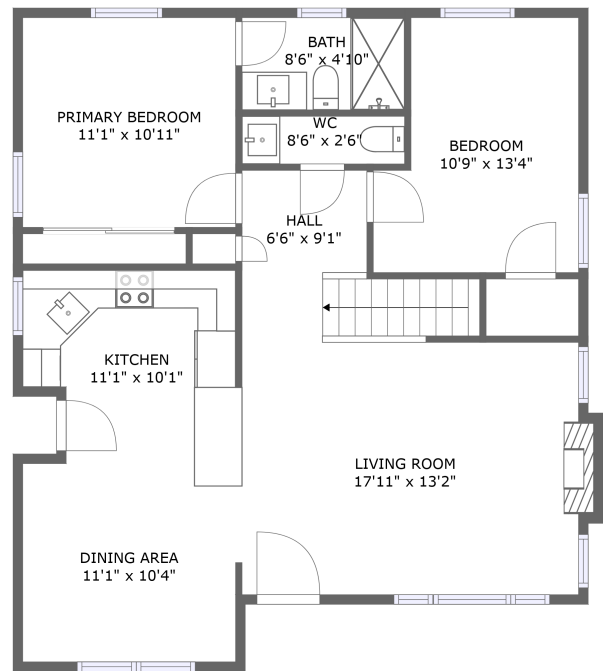


Home report

8042 19th Avenue Northwest, Loyal Heights, Seattle, King  
County, Washington, United States, 98117



FLOOR 1




FLOOR 2

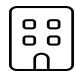
Property summary


 **1** Garages


 **3** Bedrooms

 **2** Bathrooms

 **1** Half baths

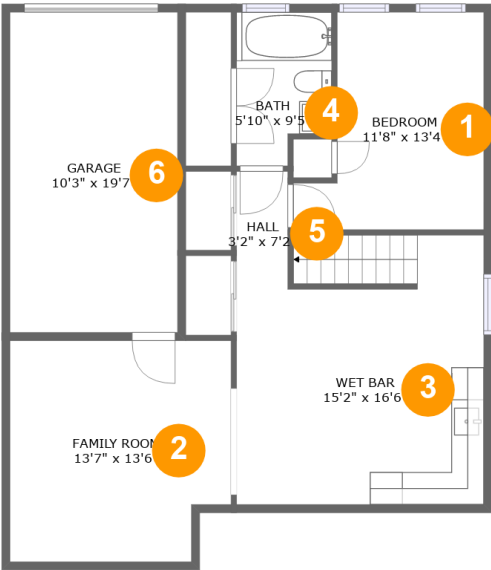
 **2** Floors

 **1,732** Gross living area sqft

 **1,954** Total sqft

Home report

8042 19th Avenue Northwest, Loyal Heights, Seattle, King  
County, Washington, United States, 98117



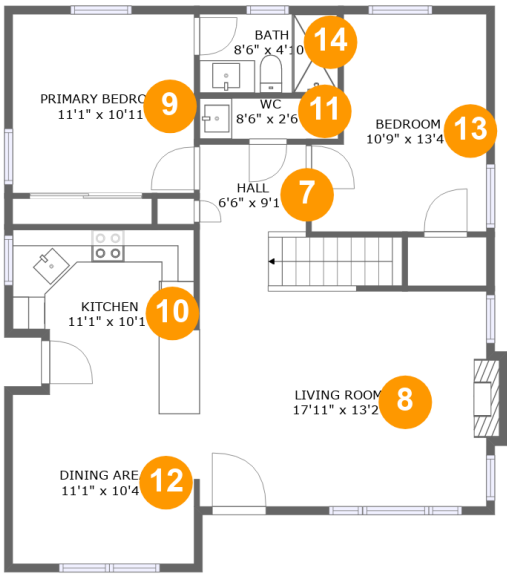
Room dimensions

Floor 1 Total sqft: 978    Living area: 761

#		Dimensions	sqft	Counted as living area
1	Bedroom	11'8" x 13'4"	127 sq. ft	Yes
2	Family Room	13'7" x 13'6"	175 sq. ft	Yes
3	Wet Bar	15'2" x 16'6"	236 sq. ft	Yes
4	Bath	5'10" x 9'5"	50 sq. ft	Yes
5	Hall	3'2" x 7'2"	23 sq. ft	Yes
6	Garage	10'3" x 19'7"	201 sq. ft	No

Home report

8042 19th Avenue Northwest, Loyal Heights, Seattle, King  
County, Washington, United States, 98117



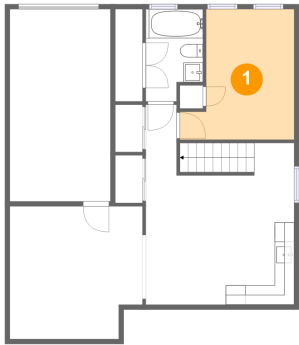
Room dimensions

Floor 2 Total sqft: 976    Living area: 971

#		Dimensions	sqft	Counted as living area
7	Hall	6'6" x 9'1"	78 sq. ft	Yes
8	Living Room	17'11" x 13'2"	238 sq. ft	Yes
9	Primary Bedroom	11'1" x 10'11"	122 sq. ft	Yes
10	Kitchen	11'1" x 10'1"	103 sq. ft	Yes
11	WC	8'6" x 2'6"	21 sq. ft	Yes
12	Dining Area	11'1" x 10'4"	115 sq. ft	Yes
13	Bedroom	10'9" x 13'4"	127 sq. ft	Yes
14	Bath	8'6" x 4'10"	41 sq. ft	Yes

8042 19th Avenue Northwest, Loyal Heights, Seattle, King  
County, Washington, United States, 98117

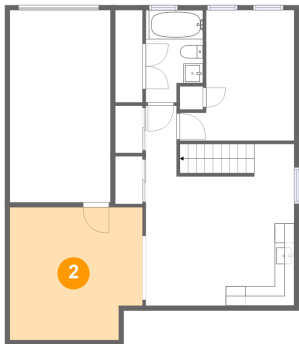
1 Floor 1 - Bedroom



Dimensions: 11'8" x 13'4"  
Area: 127 sq. ft  
Counted as living area: Yes

Heated: Yes  
Finished: Yes  
Enclosed: Yes  
Contiguous: Yes  
Permitted: Yes  
Wet space: No  
Addition: No  
Conversion: No

2 Floor 1 - Family Room

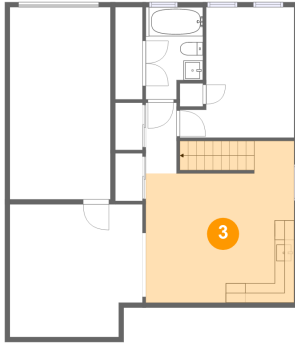


Dimensions: 13'7" x 13'6"  
Area: 175 sq. ft  
Counted as living area: Yes

Heated: Yes  
Finished: Yes  
Enclosed: Yes  
Contiguous: Yes  
Permitted: Yes  
Wet space: No  
Addition: No  
Conversion: No

8042 19th Avenue Northwest, Loyal Heights, Seattle, King  
County, Washington, United States, 98117

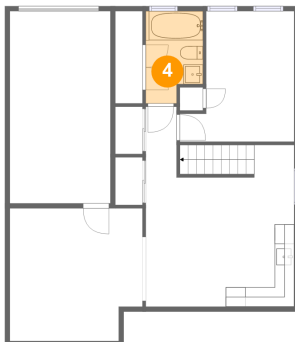
### 3 Floor 1 - Wet Bar



Dimensions: 15'2" x 16'6"  
Area: 236 sq. ft  
Counted as living area: Yes

Heated: Yes  
Finished: Yes  
Enclosed: Yes  
Contiguous: Yes  
Permitted: Yes  
Wet space: No  
Addition: No  
Conversion: No

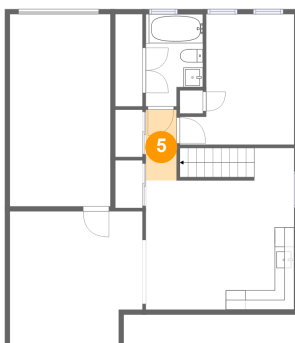
### 4 Floor 1 - Bath



Dimensions: 5'10" x 9'5"  
Area: 50 sq. ft  
Counted as living area: Yes

Heated: Yes  
Finished: Yes  
Enclosed: Yes  
Contiguous: Yes  
Permitted: Yes  
Wet space: Yes  
Addition: No  
Conversion: No

### 5 Floor 1 - Hall



Dimensions: 3'2" x 7'2"  
Area: 23 sq. ft  
Counted as living area: Yes

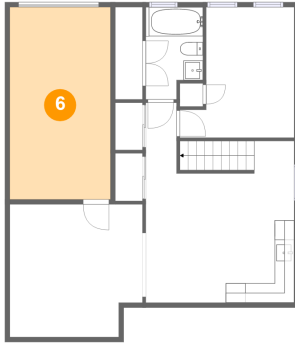
Heated: Yes  
Finished: Yes  
Enclosed: Yes  
Contiguous: Yes  
Permitted: Yes  
Wet space: No  
Addition: No  
Conversion: No

## Home report

8042 19th Avenue Northwest, Loyal Heights, Seattle, King  
County, Washington, United States, 98117

### 6 Floor 1 - Garage

---

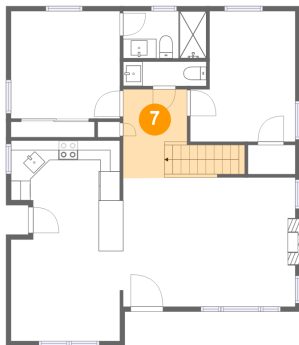


Dimensions: 10'3" x 19'7"  
Area: 201 sq. ft  
Counted as living area: No

Heated: No  
Finished: Yes  
Enclosed: Yes  
Contiguous: Yes  
Permitted: Yes  
Wet space: No  
Addition: No  
Conversion: No

### 7 Floor 2 - Hall

---

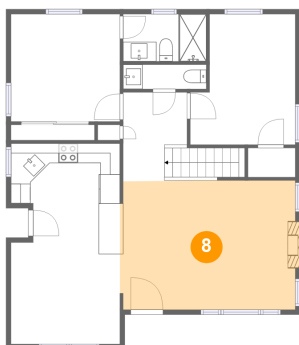


Dimensions: 6'6" x 9'1"  
Area: 78 sq. ft  
Counted as living area: Yes

Heated: Yes  
Finished: Yes  
Enclosed: Yes  
Contiguous: Yes  
Permitted: Yes  
Wet space: No  
Addition: No  
Conversion: No

### 8 Floor 2 - Living Room

---



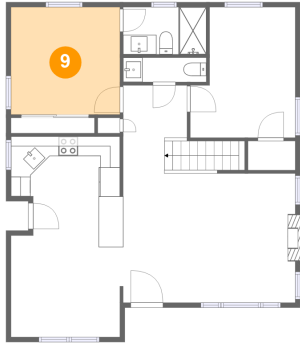
Dimensions: 17'11" x 13'2"  
Area: 238 sq. ft  
Counted as living area: Yes

Heated: Yes  
Finished: Yes  
Enclosed: Yes  
Contiguous: Yes  
Permitted: Yes  
Wet space: No  
Addition: No  
Conversion: No

## Home report

8042 19th Avenue Northwest, Loyal Heights, Seattle, King  
County, Washington, United States, 98117

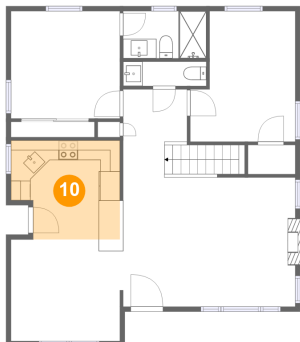
### 9 Floor 2 - Primary Bedroom



Dimensions: 11'1" x 10'11"  
Area: 122 sq. ft  
Counted as living area: Yes

Heated: Yes  
Finished: Yes  
Enclosed: Yes  
Contiguous: Yes  
Permitted: Yes  
Wet space: No  
Addition: No  
Conversion: No

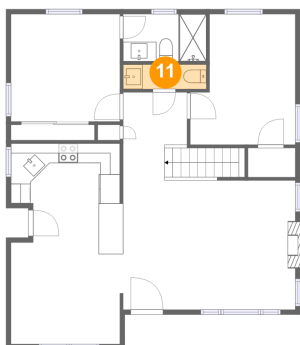
### 10 Floor 2 - Kitchen



Dimensions: 11'1" x 10'1"  
Area: 103 sq. ft  
Counted as living area: Yes

Heated: Yes  
Finished: Yes  
Enclosed: Yes  
Contiguous: Yes  
Permitted: Yes  
Wet space: No  
Addition: No  
Conversion: No

### 11 Floor 2 - WC



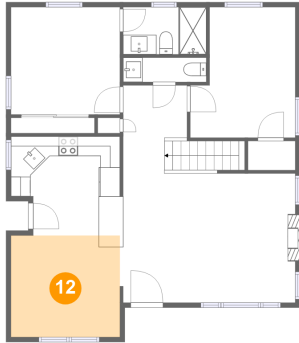
Dimensions: 8'6" x 2'6"  
Area: 21 sq. ft  
Counted as living area: Yes

Heated: Yes  
Finished: Yes  
Enclosed: Yes  
Contiguous: Yes  
Permitted: Yes  
Wet space: Yes  
Addition: No  
Conversion: No

## Home report

8042 19th Avenue Northwest, Loyal Heights, Seattle, King  
County, Washington, United States, 98117

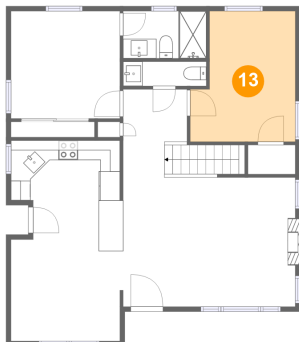
### 12 Floor 2 - Dining Area



Dimensions: 11'1" x 10'4"  
Area: 115 sq. ft  
Counted as living area: Yes

Heated: Yes  
Finished: Yes  
Enclosed: Yes  
Contiguous: Yes  
Permitted: Yes  
Wet space: No  
Addition: No  
Conversion: No

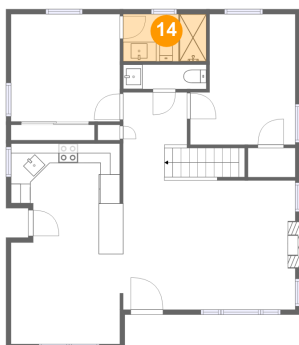
### 13 Floor 2 - Bedroom



Dimensions: 10'9" x 13'4"  
Area: 127 sq. ft  
Counted as living area: Yes

Heated: Yes  
Finished: Yes  
Enclosed: Yes  
Contiguous: Yes  
Permitted: Yes  
Wet space: No  
Addition: No  
Conversion: No

### 14 Floor 2 - Bath



Dimensions: 8'6" x 4'10"  
Area: 41 sq. ft  
Counted as living area: Yes

Heated: Yes  
Finished: Yes  
Enclosed: Yes  
Contiguous: Yes  
Permitted: Yes  
Wet space: Yes  
Addition: No  
Conversion: No