

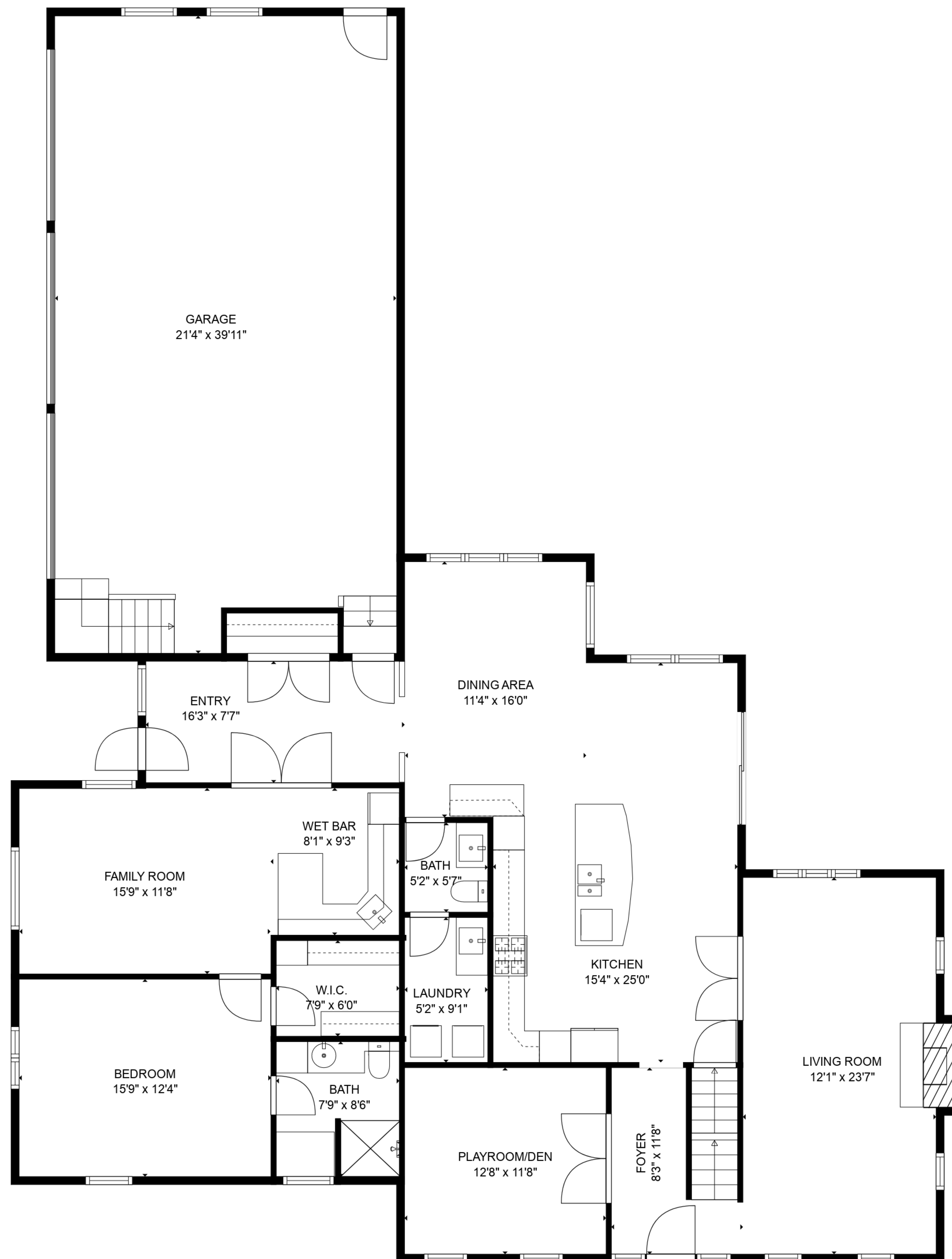
TOTAL: 3142 sq. ft

BELOW GROUND: 53 sq. ft, FLOOR 2: 1879 sq. ft, FLOOR 3: 1210 sq. ft

EXCLUDED AREAS: BASEMENT: 732 sq. ft, UTILITY: 322 sq. ft, GARAGE: 834 sq. ft,
FIREPLACE: 9 sq. ft

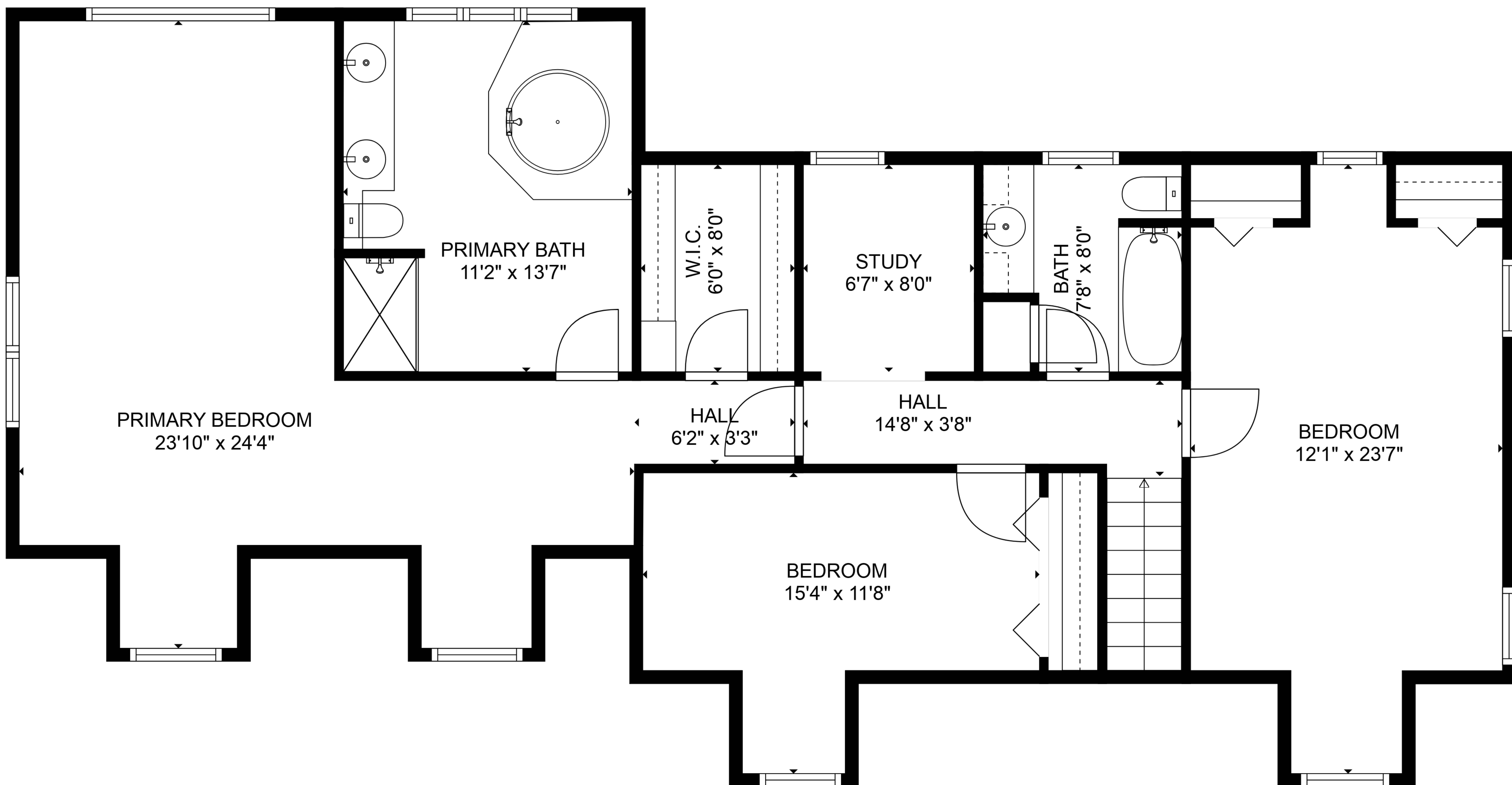


Floor Plans are provided by HouseSnappers.com. Measurements are deemed highly reliable but not guaranteed.



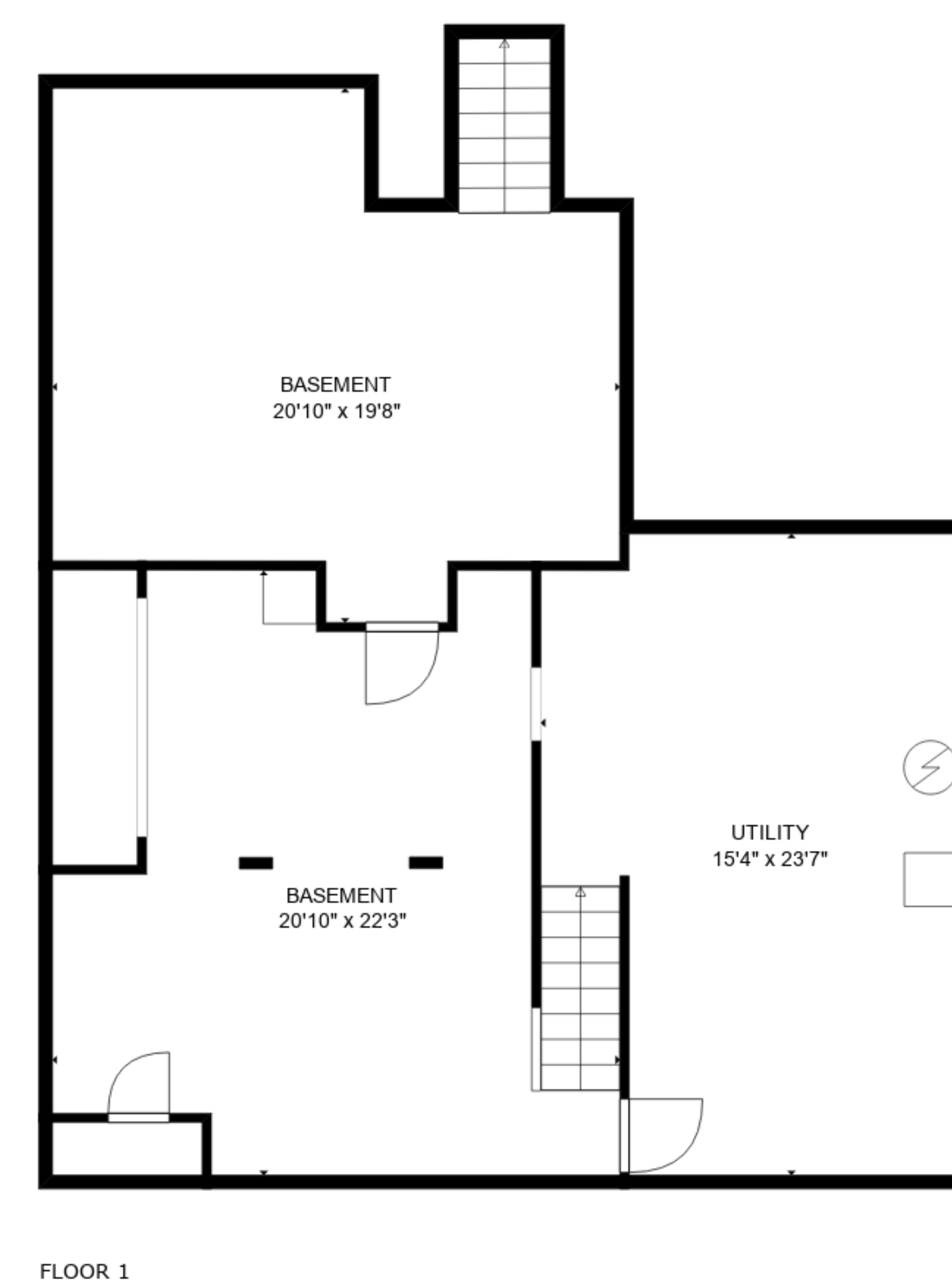
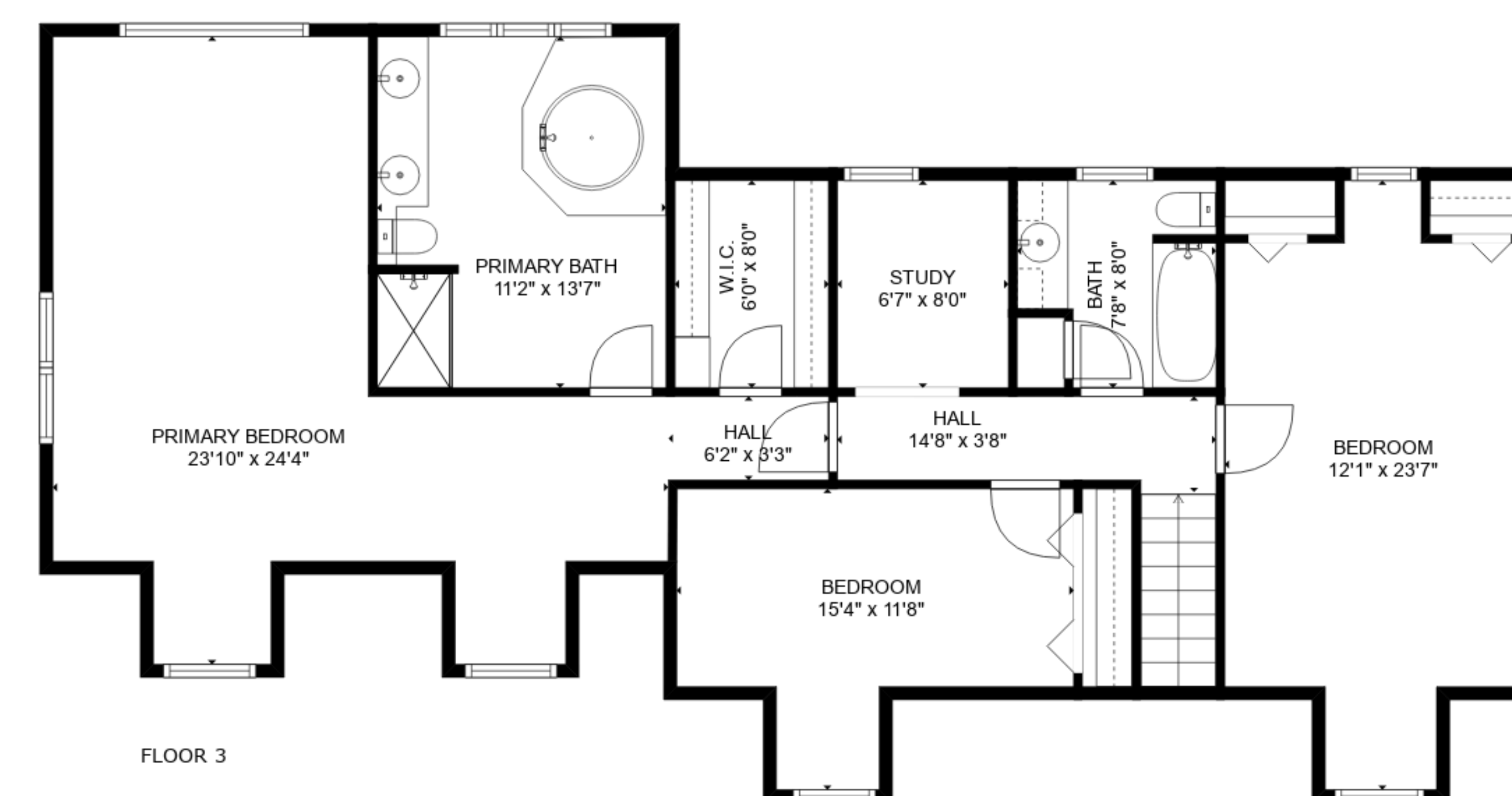
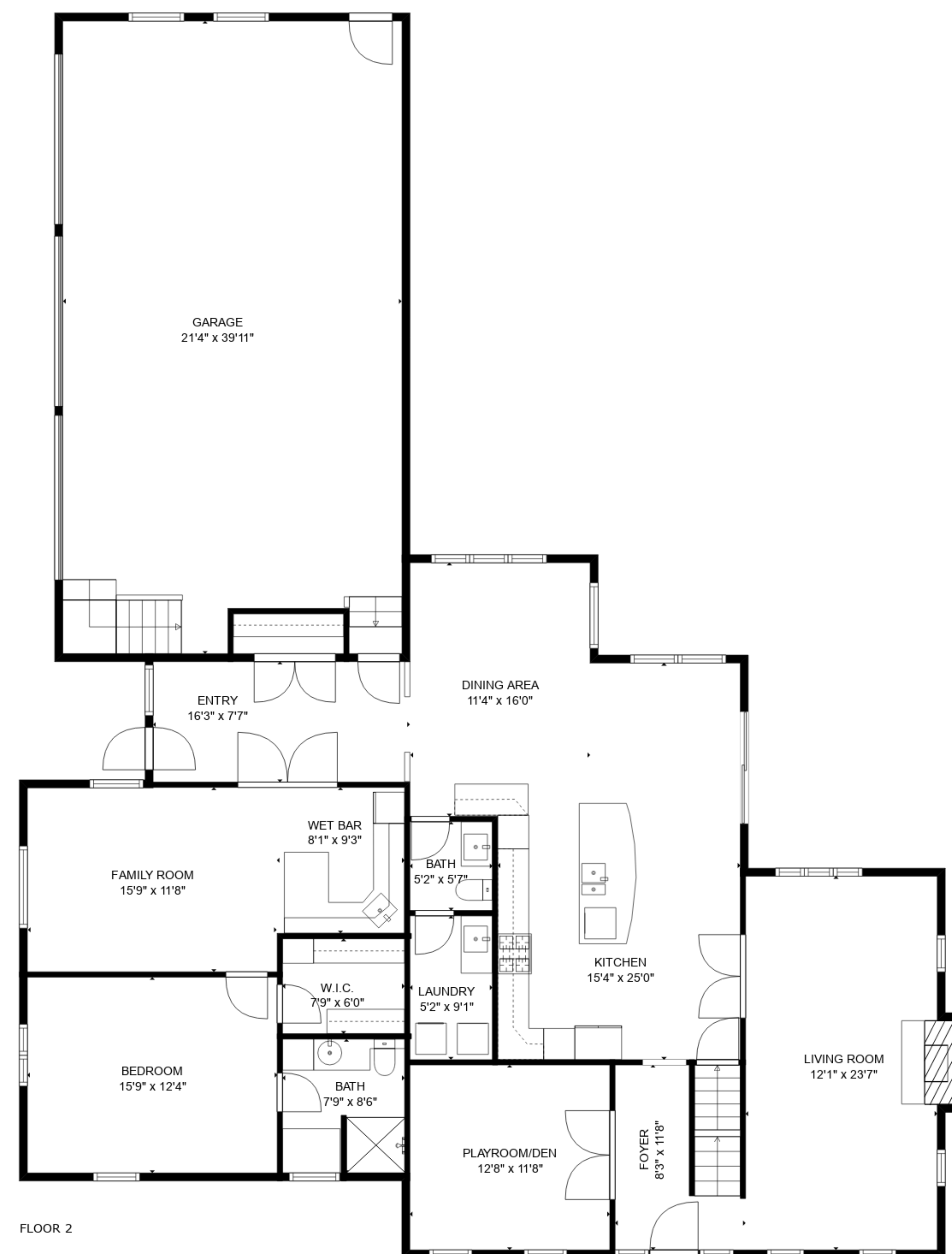
TOTAL: 3142 sq. ft

BELOW GROUND: 53 sq. ft, FLOOR 2: 1879 sq. ft, FLOOR 3: 1210 sq. ft
 EXCLUDED AREAS: BASEMENT: 732 sq. ft, UTILITY: 322 sq. ft, GARAGE: 834 sq. ft,
 FIREPLACE: 9 sq. ft



TOTAL: 3142 sq. ft

BELOW GROUND: 53 sq. ft, FLOOR 2: 1879 sq. ft, FLOOR 3: 1210 sq. ft
EXCLUDED AREAS: BASEMENT: 732 sq. ft, UTILITY: 322 sq. ft, GARAGE: 834 sq. ft,
FIREPLACE: 9 sq. ft



TOTAL: 3142 sq. ft

BELOW GROUND: 53 sq. ft, FLOOR 2: 1879 sq. ft, FLOOR 3: 1210 sq. ft

EXCLUDED AREAS: BASEMENT: 732 sq. ft, UTILITY: 322 sq. ft, GARAGE: 834 sq. ft,
FIREPLACE: 9 sq. ft