


# 38 Thare Crescent, Stonebridge, Nepean, Ontario, Canada, K2J 2P4



## Property summary


 **1** Garages

 **4** Bedrooms

 **3** Bathrooms

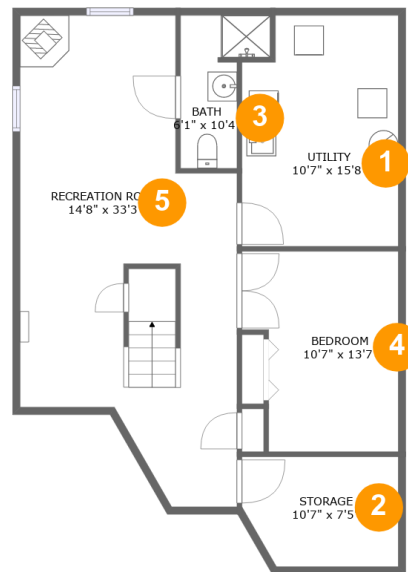
 **1** Half baths

 **3** Floors

 **2,279** Gross living area sqft

 **3,034** Total sqft

# 38 Thare Crescent, Stonebridge, Nepean, Ontario, Canada, K2J 2P4



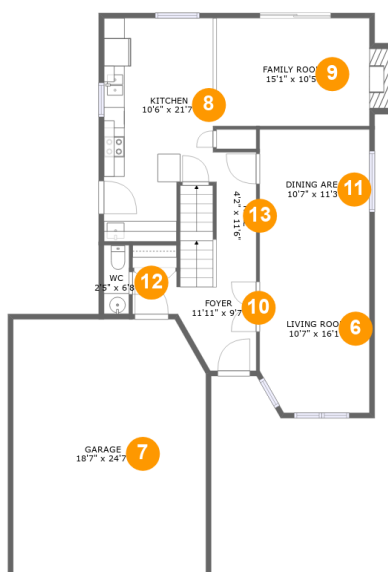
## Room dimensions

Floor 1

Total sqft: 897 Living area: 641

#		Dimensions	sqft	Counted as living area
1	Utility	10'7" x 15'8"	158 sq. ft	No
2	Storage	10'7" x 7'5"	74 sq. ft	No
3	Bath	6'1" x 10'4"	46 sq. ft	Yes
4	Bedroom	10'7" x 13'7"	129 sq. ft	Yes
5	Recreation Room	14'8" x 33'3"	388 sq. ft	Yes

# 38 Thare Crescent, Stonebridge, Nepean, Ontario, Canada, K2J 2P4



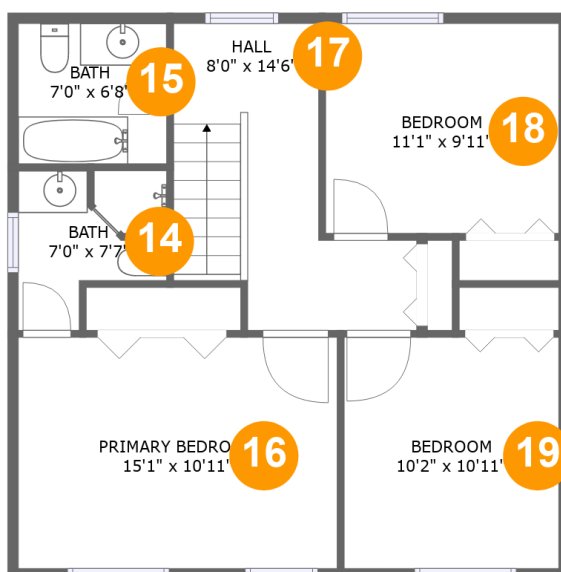
## Room dimensions

Floor 2

Total sqft: 1423 Living area: 924

#		Dimensions	sqft	Counted as living area
6	Living Room	10'7" x 16'1"	166 sq. ft	Yes
7	Garage	18'7" x 24'7"	449 sq. ft	No
8	Kitchen	10'6" x 21'7"	207 sq. ft	Yes
9	Family Room	15'1" x 10'5"	169 sq. ft	Yes
10	Foyer	11'11" x 9'7"	82 sq. ft	Yes
11	Dining Area	10'7" x 11'3"	119 sq. ft	Yes
12	WC	2'5" x 6'8"	16 sq. ft	Yes
13	Hall	4'2" x 11'6"	72 sq. ft	Yes

# 38 Thare Crescent, Stonebridge, Nepean, Ontario, Canada, K2J 2P4



## Room dimensions

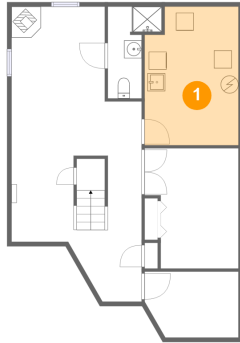
Floor 3

Total sqft: 714 Living area: 714

#		Dimensions	sqft	Counted as living area
14	Bath	7'0" x 7'7"	42 sq. ft	Yes
15	Bath	7'0" x 6'8"	47 sq. ft	Yes
16	Primary Bedroom	15'1" x 10'11"	166 sq. ft	Yes
17	Hall	8'0" x 14'6"	111 sq. ft	Yes
18	Bedroom	11'1" x 9'11"	110 sq. ft	Yes
19	Bedroom	10'2" x 10'11"	111 sq. ft	Yes

# 38 Thare Crescent, Stonebridge, Nepean, Ontario, Canada, K2J 2P4

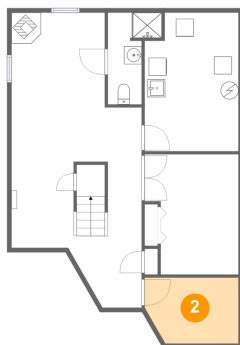
## 1 Floor 1 - Utility



**Dimensions:** 10'7" x 15'8"  
**Area:** 158 sq. ft  
**Counted as living area:** No

**Heated:** Yes  
**Finished:** No  
**Enclosed:** Yes  
**Contiguous:** Yes  
**Permitted:** Yes  
**Wet space:** No  
**Addition:** No  
**Conversion:** No

## 2 Floor 1 - Storage

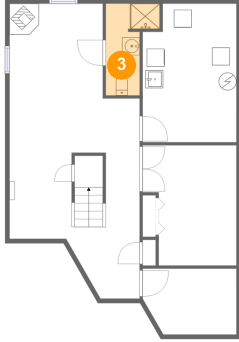


**Dimensions:** 10'7" x 7'5"  
**Area:** 74 sq. ft  
**Counted as living area:** No

**Heated:** No  
**Finished:** No  
**Enclosed:** No  
**Contiguous:** Yes  
**Permitted:** Yes  
**Wet space:** No  
**Addition:** No  
**Conversion:** No

# 38 Thare Crescent, Stonebridge, Nepean, Ontario, Canada, K2J 2P4

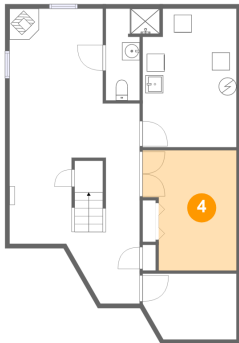
## 3 Floor 1 - Bath



Dimensions: 6'1" x 10'4"  
Area: 46 sq. ft  
Counted as living area: Yes

Heated: Yes  
Finished: Yes  
Enclosed: Yes  
Contiguous: Yes  
Permitted: Yes  
Wet space: Yes  
Addition: No  
Conversion: No

## 4 Floor 1 - Bedroom



Dimensions: 10'7" x 13'7"  
Area: 129 sq. ft  
Counted as living area: Yes

Heated: Yes  
Finished: Yes  
Enclosed: Yes  
Contiguous: Yes  
Permitted: Yes  
Wet space: No  
Addition: No  
Conversion: No

## 5 Floor 1 - Recreation Room

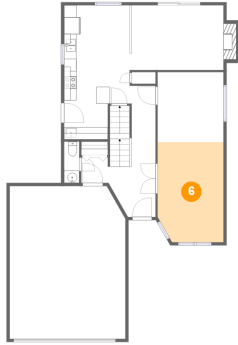


Dimensions: 14'8" x 33'3"  
Area: 388 sq. ft  
Counted as living area: Yes

Heated: Yes  
Finished: Yes  
Enclosed: Yes  
Contiguous: Yes  
Permitted: Yes  
Wet space: No  
Addition: No  
Conversion: No

# 38 Thare Crescent, Stonebridge, Nepean, Ontario, Canada, K2J 2P4

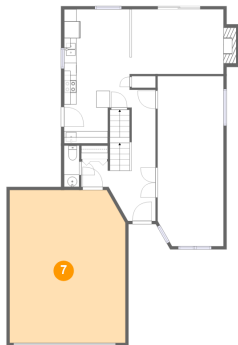
## 6 Floor 2 - Living Room



Dimensions: 10'7" x 16'1"  
Area: 166 sq. ft  
Counted as living area: Yes

Heated: Yes  
Finished: Yes  
Enclosed: Yes  
Contiguous: Yes  
Permitted: Yes  
Wet space: No  
Addition: No  
Conversion: No

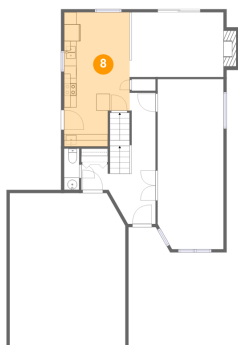
## 7 Floor 2 - Garage



Dimensions: 18'7" x 24'7"  
Area: 449 sq. ft  
Counted as living area: No

Heated: No  
Finished: No  
Enclosed: Yes  
Contiguous: Yes  
Permitted: Yes  
Wet space: No  
Addition: No  
Conversion: No

## 8 Floor 2 - Kitchen

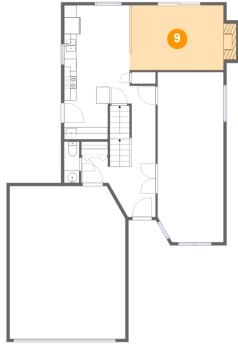


Dimensions: 10'6" x 21'7"  
Area: 207 sq. ft  
Counted as living area: Yes

Heated: Yes  
Finished: Yes  
Enclosed: Yes  
Contiguous: Yes  
Permitted: Yes  
Wet space: No  
Addition: No  
Conversion: No

# 38 Thare Crescent, Stonebridge, Nepean, Ontario, Canada, K2J 2P4

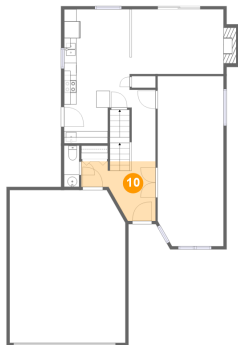
## 9 Floor 2 - Family Room



Dimensions: 15'1" x 10'5"  
Area: 169 sq. ft  
Counted as living area: Yes

Heated: Yes  
Finished: Yes  
Enclosed: Yes  
Contiguous: Yes  
Permitted: Yes  
Wet space: No  
Addition: No  
Conversion: No

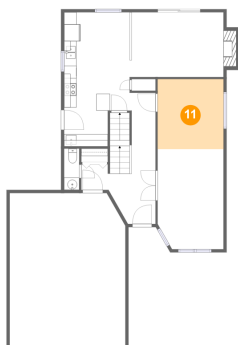
## 10 Floor 2 - Foyer



Dimensions: 11'11" x 9'7"  
Area: 82 sq. ft  
Counted as living area: Yes

Heated: Yes  
Finished: Yes  
Enclosed: Yes  
Contiguous: Yes  
Permitted: Yes  
Wet space: No  
Addition: No  
Conversion: No

## 11 Floor 2 - Dining Area



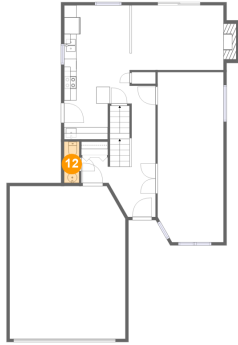
Dimensions: 10'7" x 11'3"  
Area: 119 sq. ft  
Counted as living area: Yes

Heated: Yes  
Finished: Yes  
Enclosed: Yes  
Contiguous: Yes  
Permitted: Yes  
Wet space: No  
Addition: No  
Conversion: No



# 38 Thare Crescent, Stonebridge, Nepean, Ontario, Canada, K2J 2P4

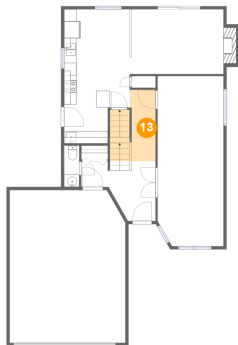
## 12 Floor 2 - WC



Dimensions: 2'5" x 6'8"  
Area: 16 sq. ft  
Counted as living area: Yes

Heated: Yes  
Finished: Yes  
Enclosed: Yes  
Contiguous: Yes  
Permitted: Yes  
Wet space: Yes  
Addition: No  
Conversion: No

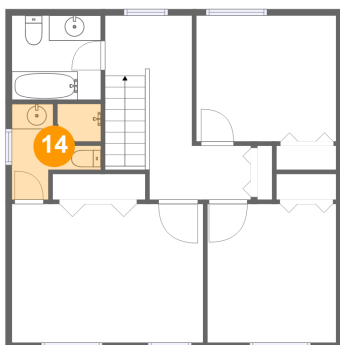
## 13 Floor 2 - Hall



Dimensions: 4'2" x 11'6"  
Area: 72 sq. ft  
Counted as living area: Yes

Heated: Yes  
Finished: Yes  
Enclosed: Yes  
Contiguous: Yes  
Permitted: Yes  
Wet space: No  
Addition: No  
Conversion: No

## 14 Floor 3 - Bath

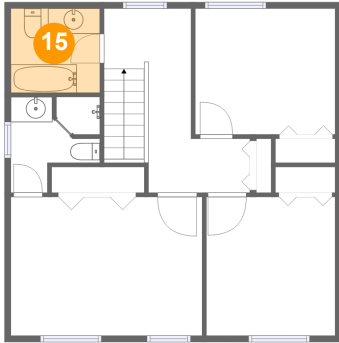


Dimensions: 7'0" x 7'7"  
Area: 42 sq. ft  
Counted as living area: Yes

Heated: Yes  
Finished: Yes  
Enclosed: Yes  
Contiguous: Yes  
Permitted: Yes  
Wet space: Yes  
Addition: No  
Conversion: No

# 38 Thare Crescent, Stonebridge, Nepean, Ontario, Canada, K2J 2P4

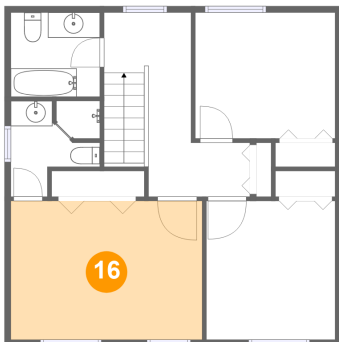
## 15 Floor 3 - Bath



Dimensions: 7'0" x 6'8"  
Area: 47 sq. ft  
Counted as living area: Yes

Heated: Yes  
Finished: Yes  
Enclosed: Yes  
Contiguous: Yes  
Permitted: Yes  
Wet space: Yes  
Addition: No  
Conversion: No

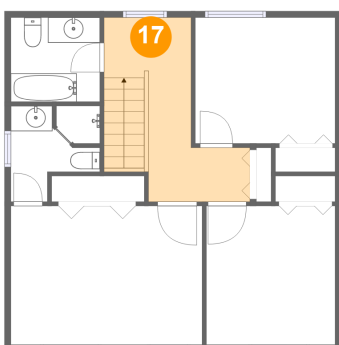
## 16 Floor 3 - Primary Bedroom



Dimensions: 15'1" x 10'11"  
Area: 166 sq. ft  
Counted as living area: Yes

Heated: Yes  
Finished: Yes  
Enclosed: Yes  
Contiguous: Yes  
Permitted: Yes  
Wet space: No  
Addition: No  
Conversion: No

## 17 Floor 3 - Hall

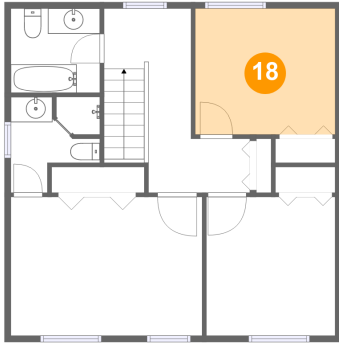


Dimensions: 8'0" x 14'6"  
Area: 111 sq. ft  
Counted as living area: Yes

Heated: Yes  
Finished: Yes  
Enclosed: Yes  
Contiguous: Yes  
Permitted: Yes  
Wet space: No  
Addition: No  
Conversion: No

# 38 Thare Crescent, Stonebridge, Nepean, Ontario, Canada, K2J 2P4

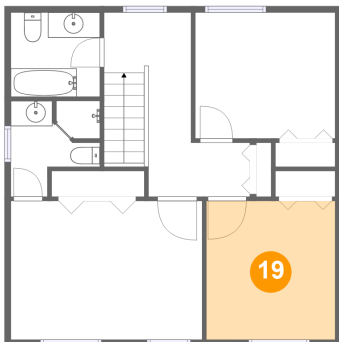
## 18 Floor 3 - Bedroom



Dimensions: 11'1" x 9'11"  
Area: 110 sq. ft  
Counted as living area: Yes

Heated: Yes  
Finished: Yes  
Enclosed: Yes  
Contiguous: Yes  
Permitted: Yes  
Wet space: No  
Addition: No  
Conversion: No

## 19 Floor 3 - Bedroom



Dimensions: 10'2" x 10'11"  
Area: 111 sq. ft  
Counted as living area: Yes

Heated: Yes  
Finished: Yes  
Enclosed: Yes  
Contiguous: Yes  
Permitted: Yes  
Wet space: No  
Addition: No  
Conversion: No