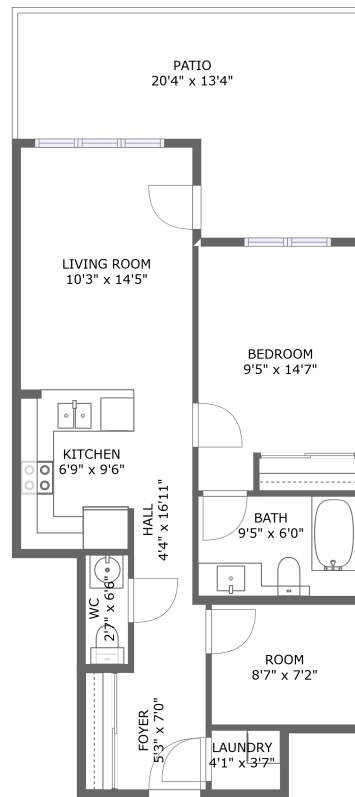



20 N Park Rd,103,Thornhill,ON,CA, 103



FLOOR 1

Property summary

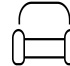
 **0** Garages


 **1** Bedrooms

 **1** Bathrooms

 **1** Half baths

 **1** Floors

 **639**
Gross living
area sqft

 **848**
Total sqft

20 N Park Rd,103,Thornhill,ON,CA, 103**Room dimensions****Floor 1****Total sqft: 848 Living area: 639**

#		Dimensions	sqft	Counted as living area
1	Foyer	5'3" x 7'0"	37 sq. ft	Yes
2	Bath	9'5" x 6'0"	56 sq. ft	Yes
3	Room	8'7" x 7'2"	62 sq. ft	Yes
4	Laundry	4'1" x 3'7"	15 sq. ft	Yes
5	Bedroom	9'5" x 14'7"	124 sq. ft	Yes
6	Living Room	10'3" x 14'5"	149 sq. ft	Yes
7	Hall	4'4" x 16'11"	63 sq. ft	Yes
8	Kitchen	6'9" x 9'6"	63 sq. ft	Yes
9	Patio	20'4" x 13'4"	209 sq. ft	No
10	WC	2'7" x 6'6"	17 sq. ft	Yes

1 Floor 1 - Foyer



Dimensions: 5'3" x 7'0"
Area: 37 sq. ft
Counted as living area: Yes

Heated: Yes
Finished: Yes
Enclosed: Yes
Contiguous: Yes
Permitted: Yes
Wet space: No
Addition: No
Conversion: No

2 Floor 1 - Bath



Dimensions: 9'5" x 6'0"
Area: 56 sq. ft
Counted as living area: Yes

Heated: Yes
Finished: Yes
Enclosed: Yes
Contiguous: Yes
Permitted: Yes
Wet space: Yes
Addition: No
Conversion: No

20 N Park Rd,103,Thornhill,ON,CA, 103

3 Floor 1 - Room



Dimensions: 8'7" x 7'2"
Area: 62 sq. ft
Counted as living area: Yes

Heated: Yes
Finished: Yes
Enclosed: Yes
Contiguous: Yes
Permitted: Yes
Wet space: No
Addition: No
Conversion: No

4 Floor 1 - Laundry



Dimensions: 4'1" x 3'7"
Area: 15 sq. ft
Counted as living area: Yes

Heated: Yes
Finished: Yes
Enclosed: Yes
Contiguous: Yes
Permitted: Yes
Wet space: No
Addition: No
Conversion: No

5 Floor 1 - Bedroom



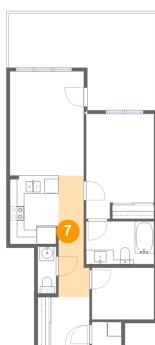
Dimensions: 9'5" x 14'7"
Area: 124 sq. ft
Counted as living area: Yes

Heated: Yes
Finished: Yes
Enclosed: Yes
Contiguous: Yes
Permitted: Yes
Wet space: No
Addition: No
Conversion: No

20 N Park Rd,103,Thornhill,ON,CA, 103**6 Floor 1 - Living Room**

Dimensions: 10'3" x 14'5"
Area: 149 sq. ft
Counted as living area: Yes

Heated: Yes
Finished: Yes
Enclosed: Yes
Contiguous: Yes
Permitted: Yes
Wet space: No
Addition: No
Conversion: No

7 Floor 1 - Hall

Dimensions: 4'4" x 16'11"
Area: 63 sq. ft
Counted as living area: Yes

Heated: Yes
Finished: Yes
Enclosed: Yes
Contiguous: Yes
Permitted: Yes
Wet space: No
Addition: No
Conversion: No

8 Floor 1 - Kitchen

Dimensions: 6'9" x 9'6"
Area: 63 sq. ft
Counted as living area: Yes

Heated: Yes
Finished: Yes
Enclosed: Yes
Contiguous: Yes
Permitted: Yes
Wet space: No
Addition: No
Conversion: No

9 Floor 1 - Patio



Dimensions: 20'4" x 13'4"
Area: 209 sq. ft
Counted as living area: No

Heated: No
Finished: Yes
Enclosed: No
Contiguous: Yes
Permitted: Yes
Wet space: No
Addition: No
Conversion: No

10 Floor 1 - WC



Dimensions: 2'7" x 6'6"
Area: 17 sq. ft
Counted as living area: Yes

Heated: Yes
Finished: Yes
Enclosed: Yes
Contiguous: Yes
Permitted: Yes
Wet space: Yes
Addition: No
Conversion: No